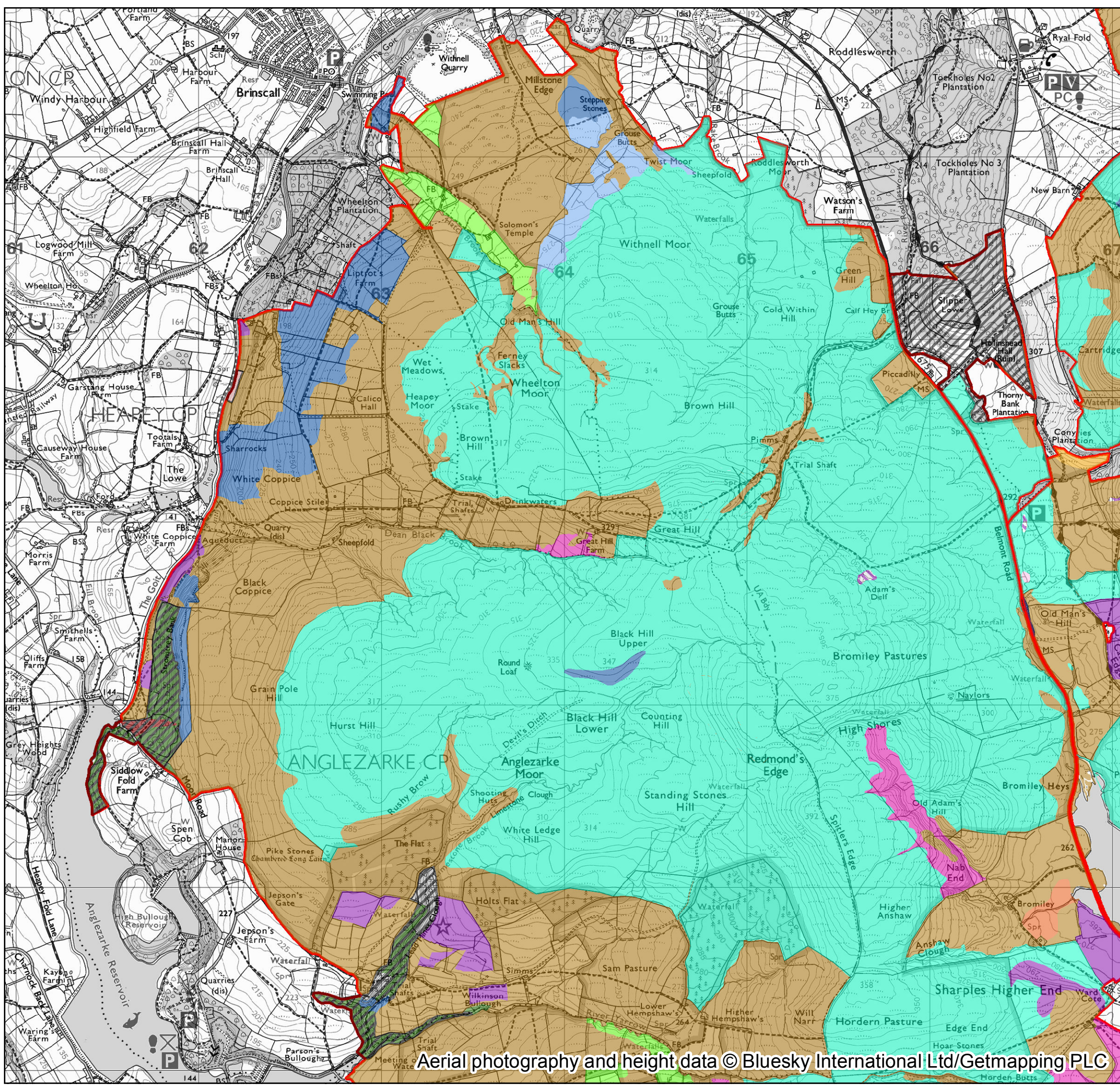


West Pennine Moors SSSI

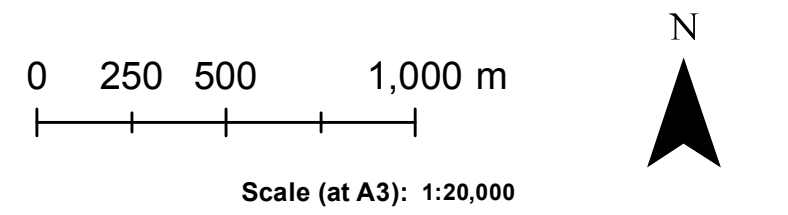
Priority Habitats and Features Map

Withnell, Wheelton, and Anglezarke Moors



-  SSSI boundary
- Upland habitats**
-  Blanket bog (M2, M3, M18, M19, M20, M21, M25)
-  Dry heath (H8, H9, H12)
-  Wet heath (M15)
-  Acid flushes (M6)
-  Lime-rich flushes (M9)
-  Mosaic of acid and lime-rich flushes (S3, M6, M10, M37)
-  Upland fen/rush pasture transition or mosaic (M6, M23, M25, M26)
-  Additional upland breeding bird habitat
- Moorland fringe grasslands**
-  Rush pastures and mire grasslands (M23, M25, M26)
-  Acid grasslands (U4, U5)
-  Neutral hay meadows and pastures (MG5)
-  Neutral hay meadows and pastures (MG8)
- Woodland**
-  Wet woodland (W2, W4, W5, W7)
-  Upland oakwood (W11, W16)
-  Habitat supporting woodland breeding birds

NB. All notified upland habitats and moorland fringe grasslands also provide key upland breeding bird habitat



Map produced by Amy Cowburn
Cheshire to Lancashire
Area Team, Date: 29.09.2016

Contains, or is derived from, information
supplied by Ordnance Survey. © Crown
copyright and database rights 2016.
Ordnance Survey 100022021.