

NATURAL ENGLAND

DOGS MUST BE ON A SHORT LEAD

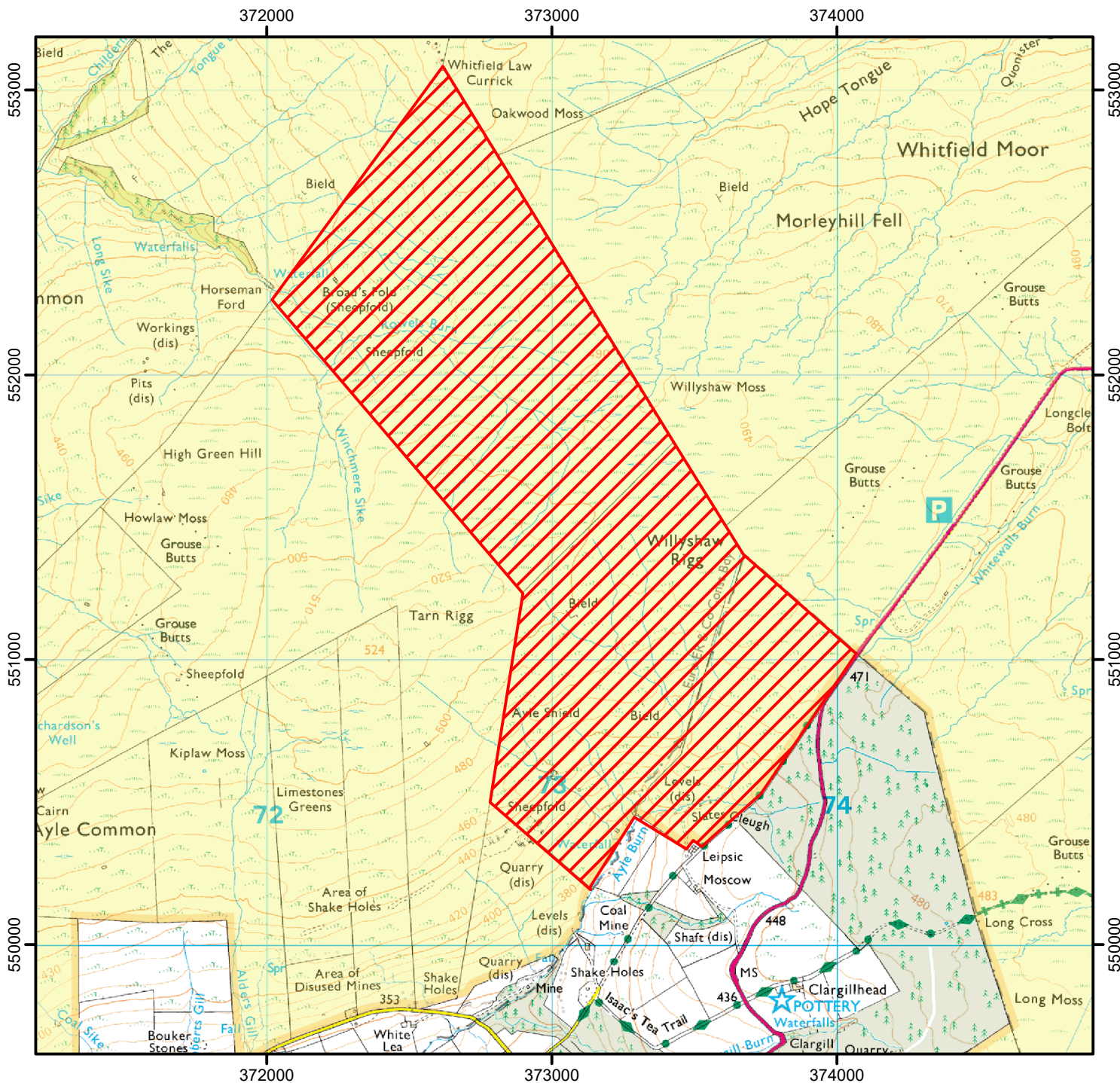
To avoid disturbance to game birds, dogs must be kept on a short lead on the open access land shown hatched in red on the map below.

From 01 August to 10 December each year.

This does not affect Public Rights of Way.



Case number: 2009050253



0 250 500 1,000 M

Open Access Land

Open Access Restriction

A north arrow pointing upwards and a circular icon containing a silhouette of a person walking, representing a public right of way.

© Crown Copyright and database right 2024.
Ordnance Survey 100022021

For more information call the Open Access Contact Centre on 0300 060 2091
or visit our website at www.gov.uk/right-of-way-open-access-land/use-your-right-to-roam