

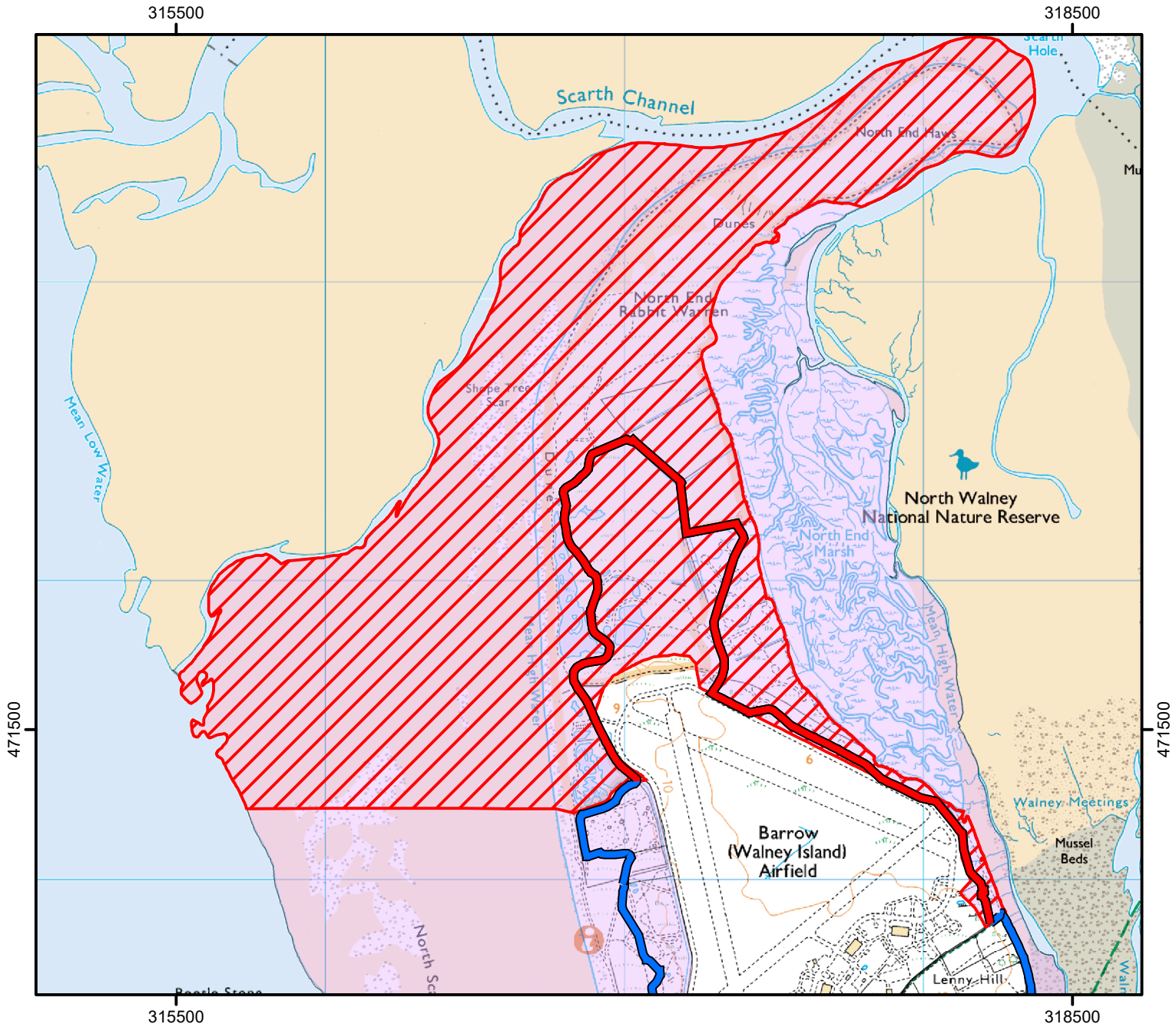
NATURAL ENGLAND

DOGS ON LEADS

To protect sensitive wildlife please keep dogs on leads on the section of the King Charles III England Coast Path and coastal margin shown in red on the map below. This does not affect Public Rights of Way and permissive or traditional rights.



This map treats restrictions and/or exclusions in isolation for this location. Some exclusions/restrictions may overlap please refer to the extent of directions map for more details. Case numbers: 2017038346 & 2017038347



0 500 1,000 M

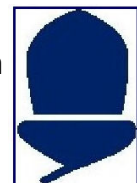
© Crown Copyright and database right 2025.
Ordnance Survey 100022021

 King Charles III ECP Restriction

 King Charles III England Coast Path

 Coastal Margin

 Coastal Margin Restriction

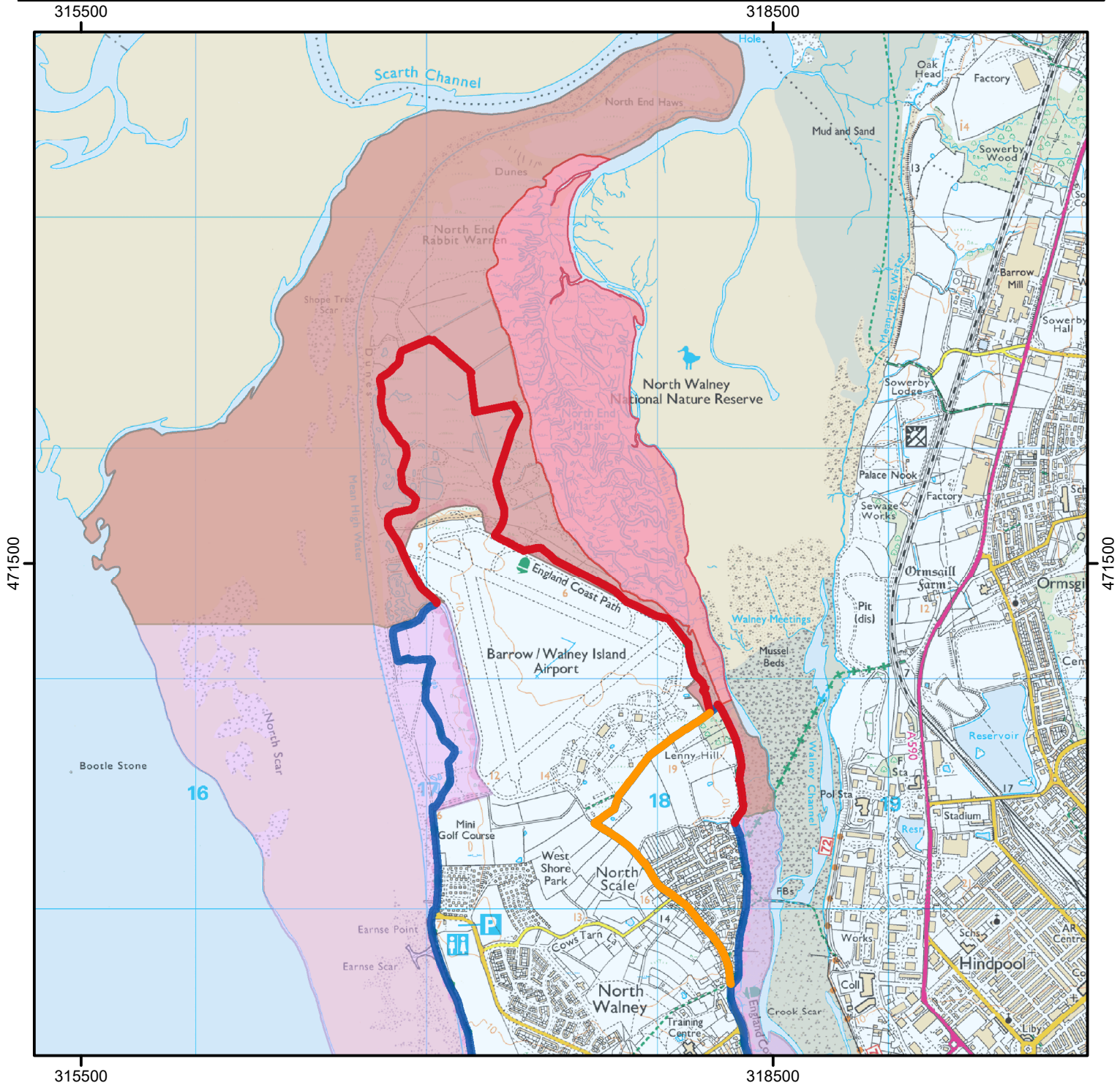








For more information call the Open Access Contact Centre on 0300 060 2091
or visit our website at www.gov.uk/right-of-way-open-access-land/use-your-right-to-roam

Map 1: Extent of directions on Walney Island

This map provides the context of exclusions/restrictions in the vicinity of the exclusions/restrictions detailed in the attached map(s). These directions only affect land where coastal access rights apply and will not affect existing rights of access such as on public rights of way.

Please refer to the individual maps for more detail.



-  King Charles III England Coast Path
-  Alternative Routes
-  Coastal Margin
-  s26(3)(a), Sensitive Wildlife
-  s25A, Unsuitable for Public Access
-  s26(3)(a), Sensitive Wildlife



© Crown Copyright and database right 2025.
Ordnance Survey 100022021



For more information call the Open Access Contact Centre on 0300 060 2091
or visit our website at www.gov.uk/right-of-way-open-access-land/use-your-right-to-roam