

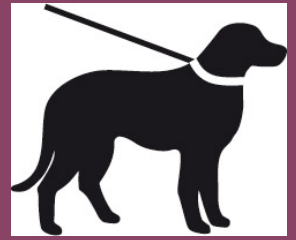
NATURAL
ENGLAND

KEEP DOGS ON A SHORT LEAD

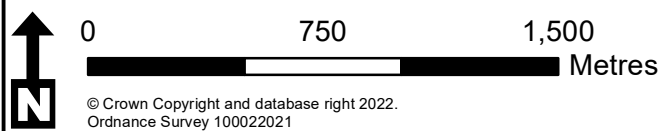
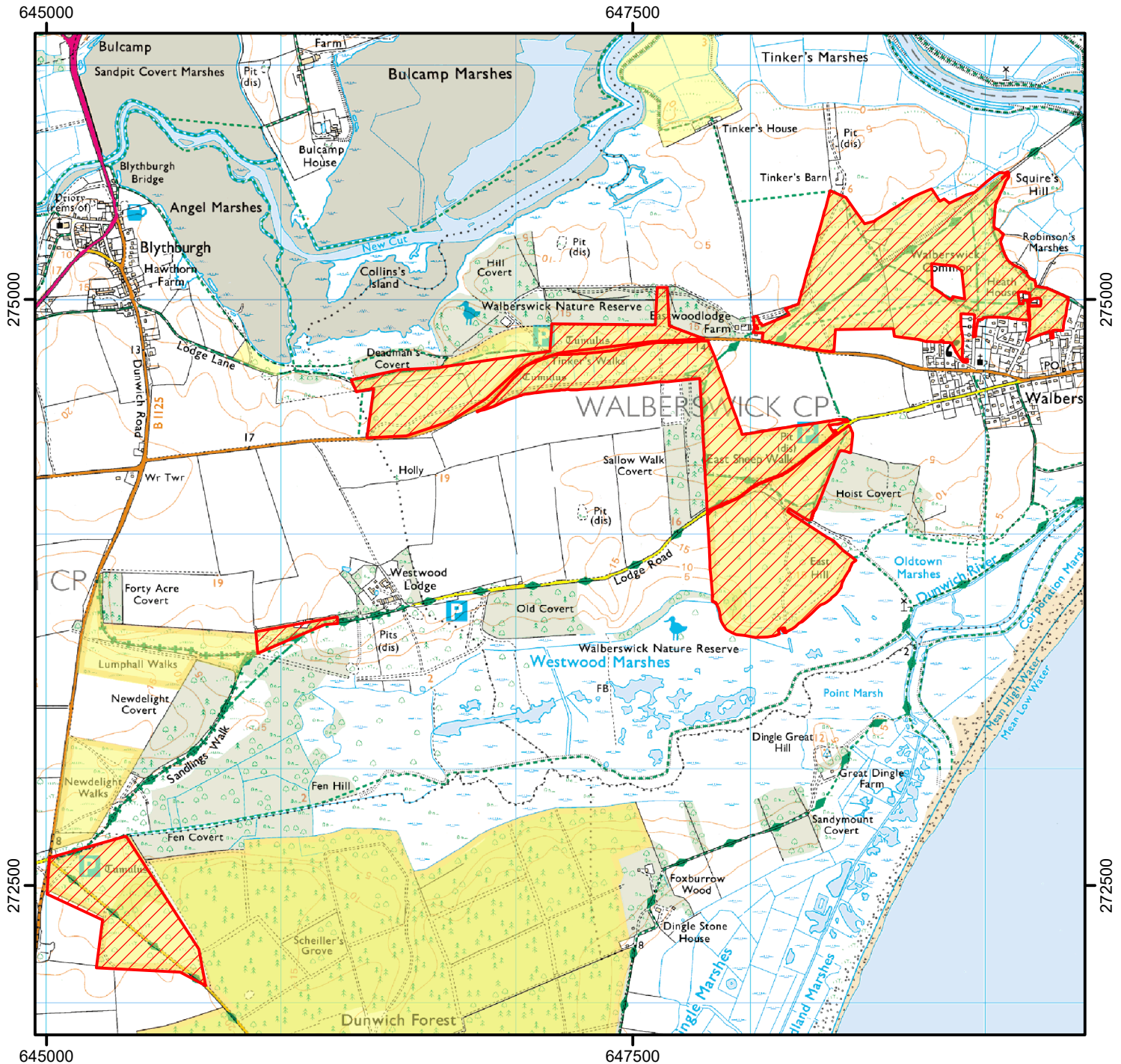
To protect sensitive wildlife, dogs must be kept on a short lead on the open access land shown hatched on the map below.


This does not affect public rights of way where dogs should be kept under effective control.


Applies between 1st and 31st August annually.



Case Number: 2007020109



 Restricted Open Access Land

 Open Access Land



For more information call the Open Access Contact Centre on 0300 060 2091
or visit our website at www.gov.uk/right-of-way-open-access-land/use-your-right-to-roam