

Coastal Access: Consultation on restriction review

(Please see accompanying summary)

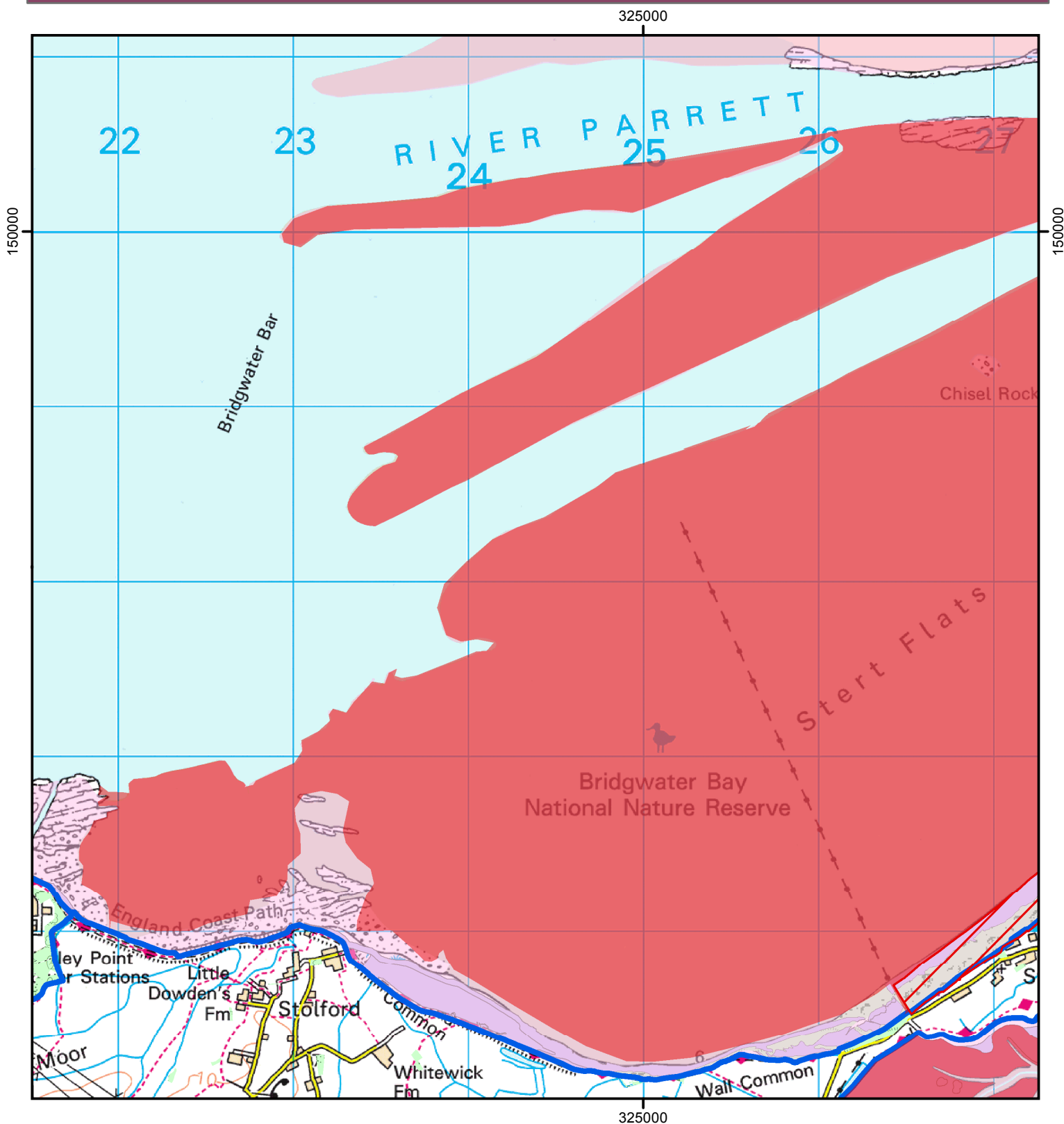
Consultation start date: 18 December 2020

Consultation end date: 29 January 2021

This does not affect Public Rights of Way.

Case number: 2014107416

Map 1 of 3



0 775 1,550 m

© Crown Copyright and database right 2020.
All rights reserved.
Ordnance Survey Licence number 100022021.

Legend

- CROW s25A Exclusion (unsuitable for access)
- Proposed Stert Point s26
- Coastal Access Land
- England Coast Path



Coastal Access: Consultation on restriction review

(Please see accompanying summary)

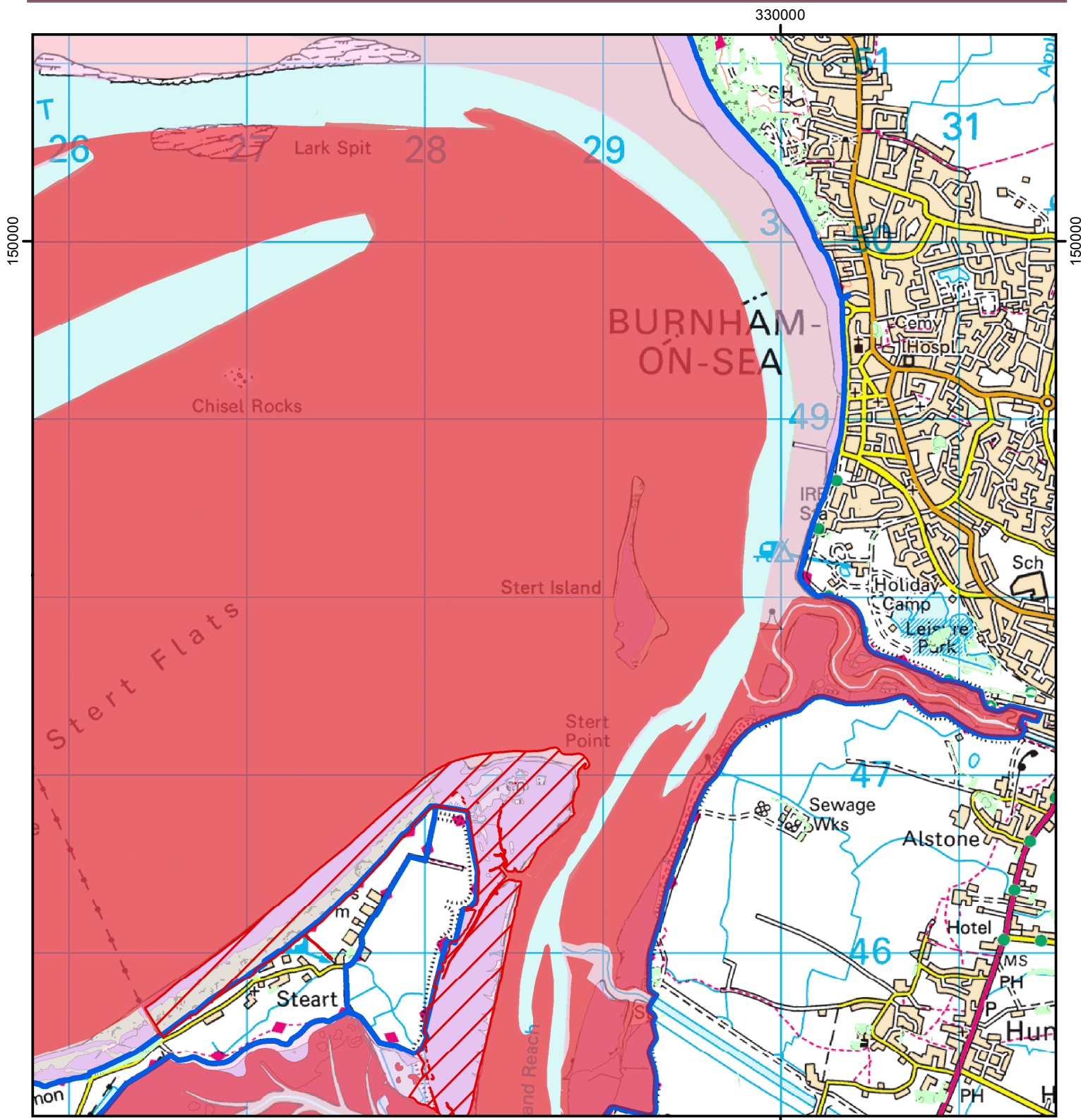
Consultation start date: 18 December 2020

Consultation end date: 29 January 2021

This does not affect Public Rights of Way.

Case number: 2014107416

Map 2 of 3



0 775 1,550 m

© Crown Copyright and database right 2020.
All rights reserved.
Ordnance Survey Licence number 100022021.

Legend

- CROW s25A Exclusion (unsuitable for access)
- Proposed Stert Point s26
- Coastal Access Land
- England Coast Path



Coastal Access: Consultation on restriction review

(Please see accompanying summary)

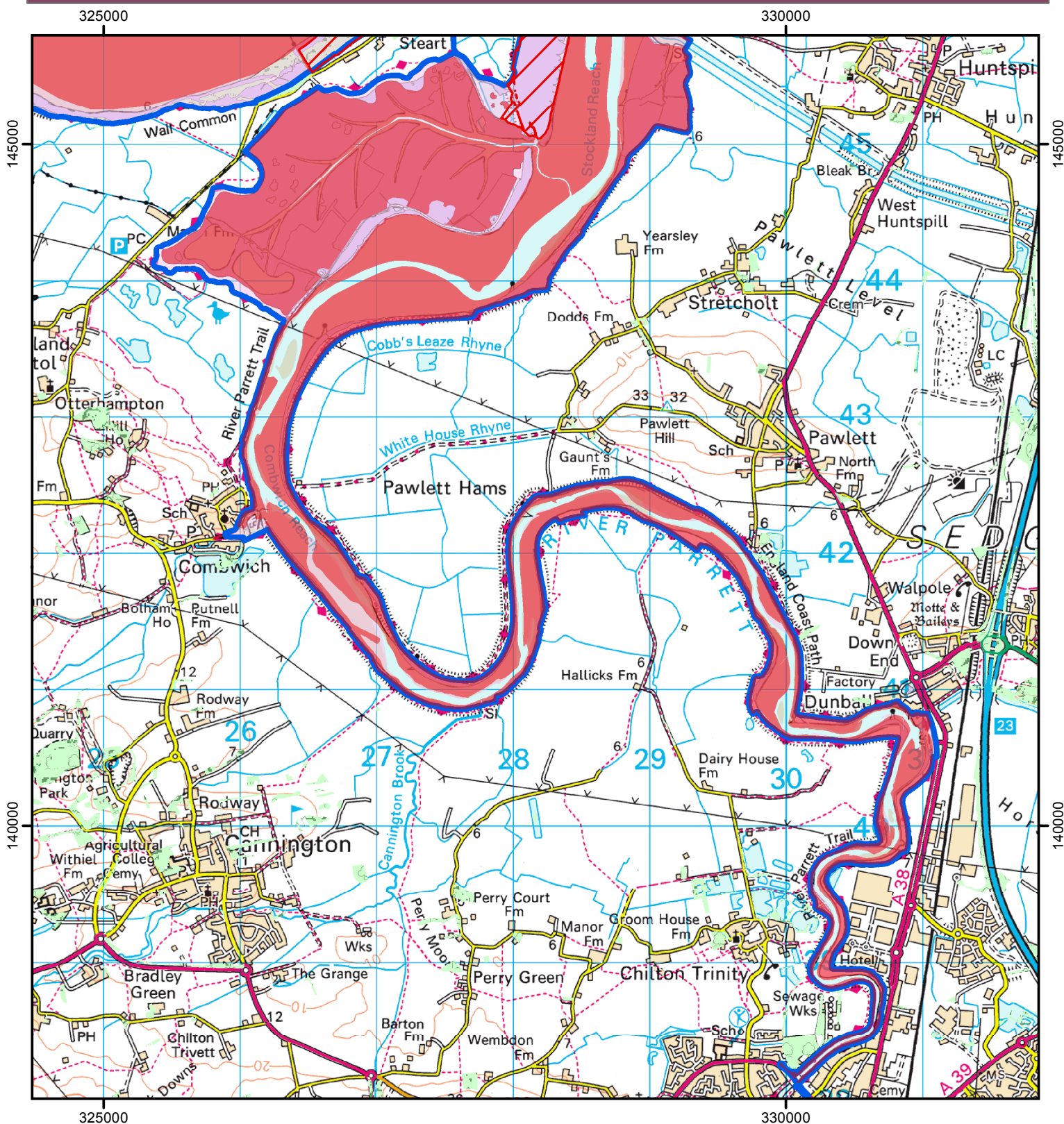
Consultation start date: 18th December

Consultation end date: 29th January 2021

This does not affect Public Rights of Way.

Case number: 2014107416

Map 3 of 3



0 1,000 2,000 m

Legend

- CROW s25A Exclusion (unsuitable for access)
- Proposed Start Point s26
- Coastal Access Land

