

NO ACCESS TO SALTMARSH & FLATS

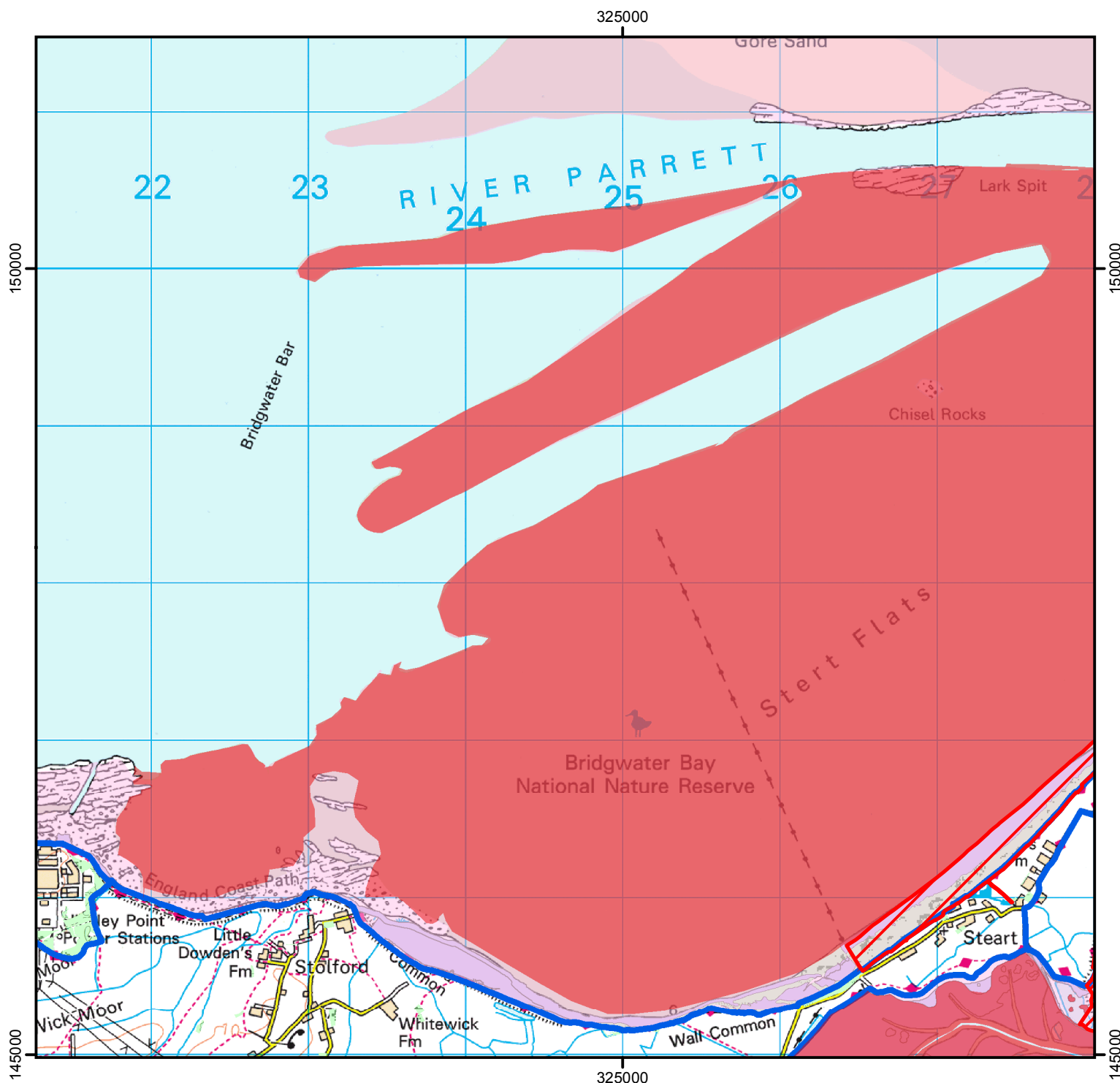
SALTMARSH & FLATS UNSUITABLE FOR WALKING

The England Coast Path remains open for public access.
This does not affect Public Rights of Way and permissive
or traditional rights.

Until 15 March 2071.



Case number: 2014107416 Map 1 of 3



0 910 1,820 m

© Crown Copyright and database right 2021.
All rights reserved.
Ordnance Survey Licence number 100022021.

Legend

- CROW s25A Exclusion (unsuitable for access)
- Stern Point s26
- Coastal Access Land
- England Coast Path



For more information call the Open Access Contact Centre on 0300 060 2091
or visit our website at www.gov.uk/right-of-way-open-access-land/use-your-right-to-roam

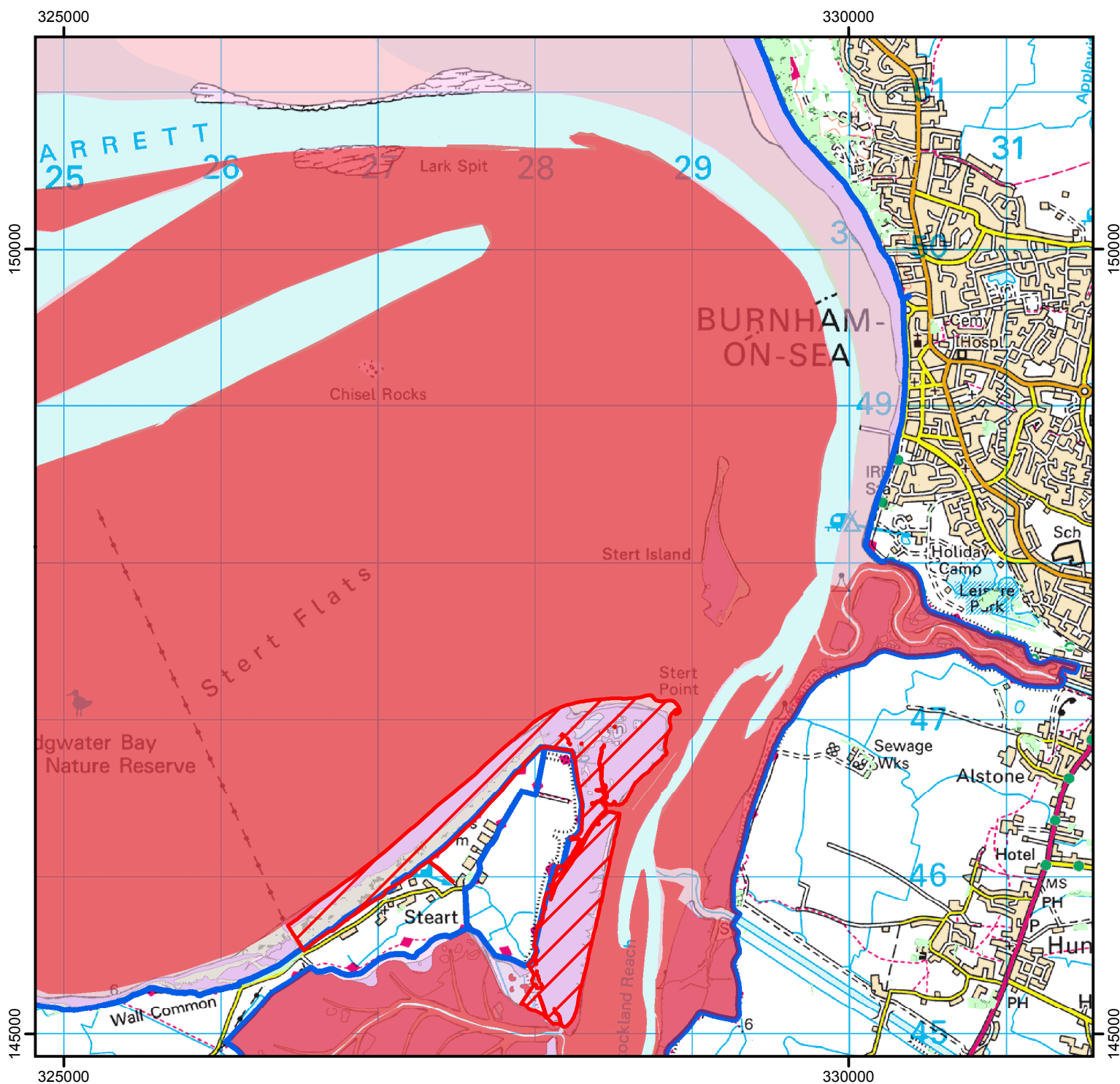
NO ACCESS TO SALTMARSH & FLATS

SALTMARSH & FLATS UNSUITABLE FOR WALKING

The England Coast Path remains open for public access.
This does not affect Public Rights of Way and permissive
or traditional rights.

Until 15 March 2021.

Case number: 2014107416 Map 2 of 3



0 910 1,820 m

© Crown Copyright and database right 2021.
All rights reserved.
Ordnance Survey Licence number 100022021.

Legend

- CROW s25A Exclusion (unsuitable for access)
- Stert Point s26
- Coastal Access Land
- England Coast Path



For more information call the Open Access Contact Centre on 0300 060 2091
or visit our website at www.gov.uk/right-of-way-open-access-land/use-your-right-to-roam

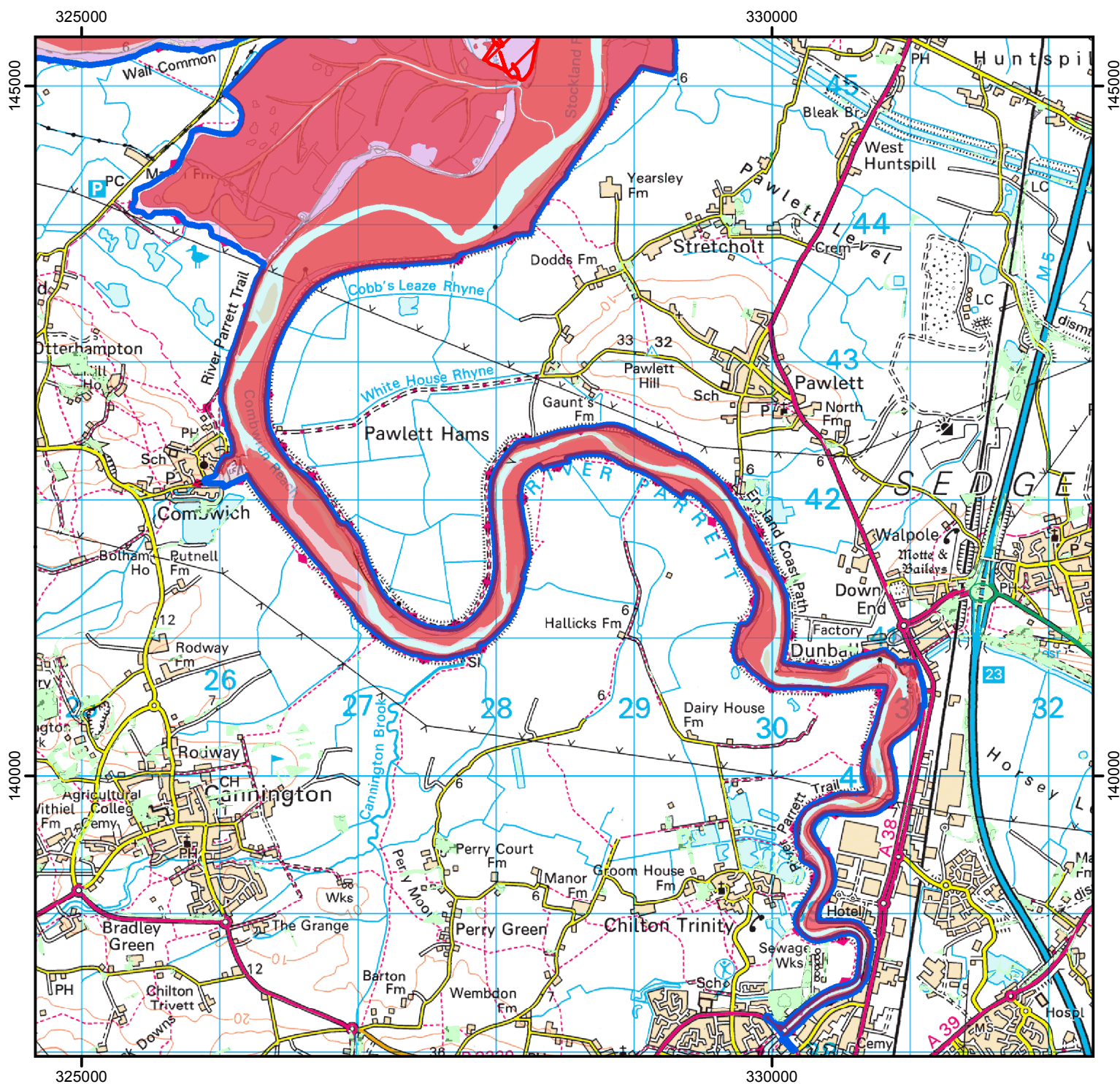
NO ACCESS TO SALTMARSH & FLATS

SALTMARSH & FLATS UNSUITABLE FOR WALKING

The England Coast Path remains open for public access.
This does not affect Public Rights of Way and permissive
or traditional rights.

Until 15 March 2071.

Case number: 2014107416 Map 3 of 3



0 1,000 2,000 m

© Crown Copyright and database right 2021.
All rights reserved.
Ordnance Survey Licence number 100022021.

Legend

- CROW s25A Exclusion (unsuitable for access)
- Start Point s26
- Coastal Access Land
- England Coast Path



**For more information call the Open Access Contact Centre on 0300 060 2091
or visit our website at www.gov.uk/right-of-way-open-access-land/use-your-right-to-roam**