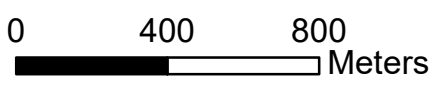
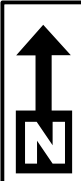
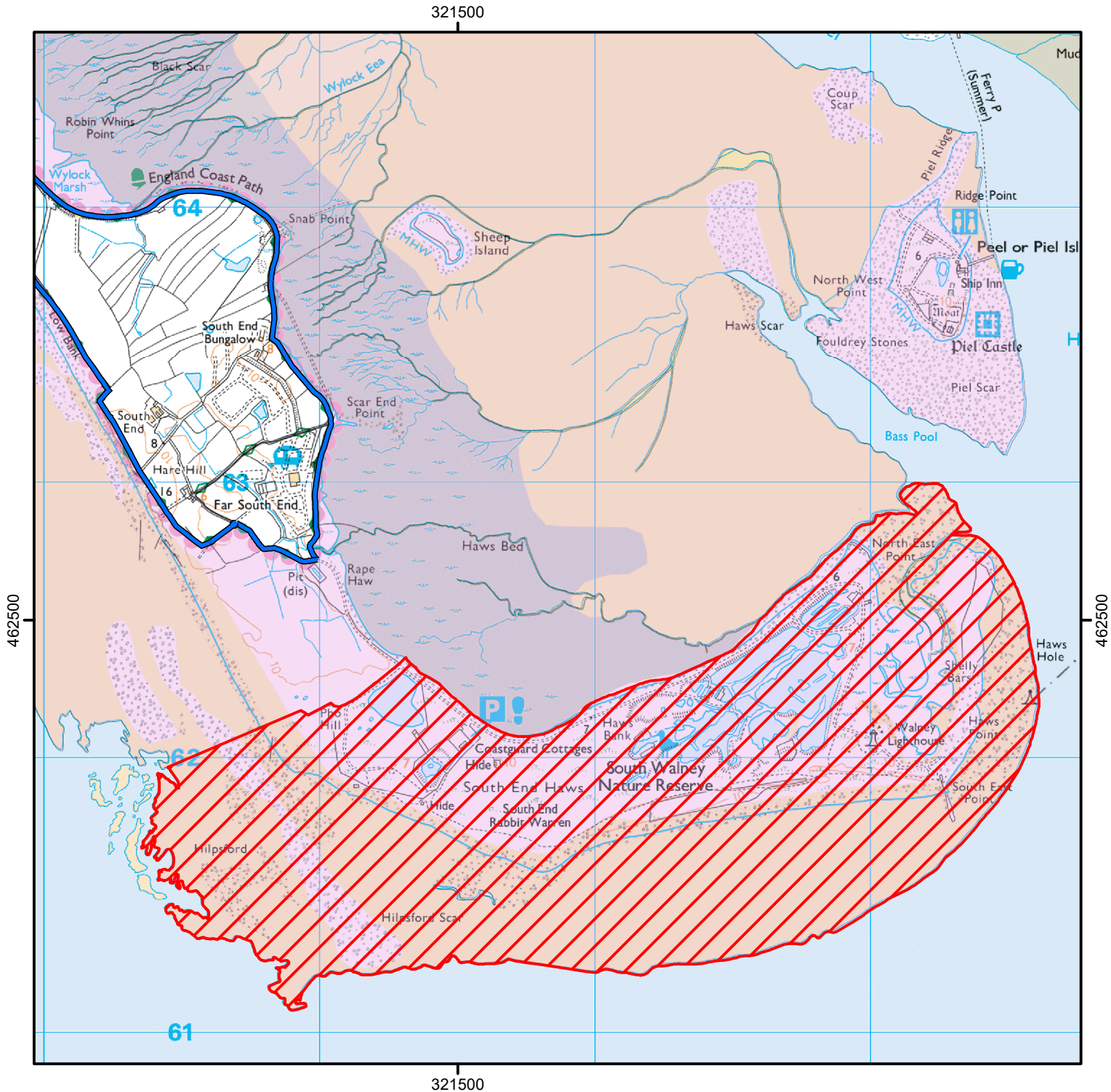


# CROW Open Access: Consultation on review of restriction



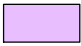
Please see accompanying notice.

Consultation end date: 08 January 2025

Case number: 2017038351



© Crown Copyright and database right 2024.  
Ordnance Survey 100022021

-  King Charles III England Coast Path
-  Coastal Margin Consultation
-  Coastal Margin



For more information call the Open Access Contact Centre on 0300 060 2091  
or visit our website at [www.gov.uk/right-of-way-open-access-land/use-your-right-to-roam](http://www.gov.uk/right-of-way-open-access-land/use-your-right-to-roam)