

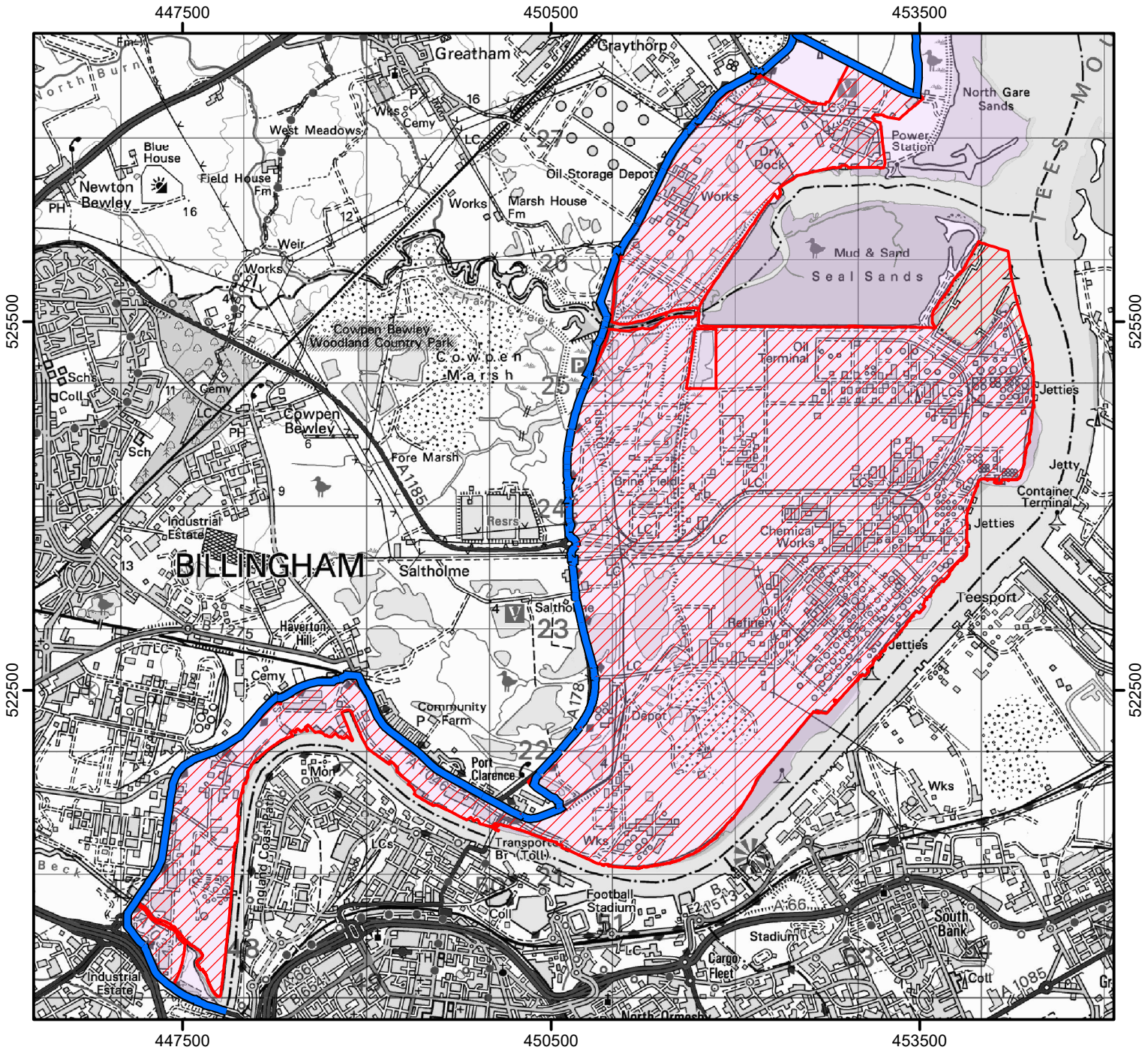
NO ACCESS TO COASTAL MARGIN

The coastal margin shown hatched in red on the map below is closed for land management and public safety purposes.

The King Charles III England Coast Path remains open for public access.

This does not affect Public Rights of Way and permissive or traditional rights.

Case number: 2014087356



0 1,000 2,000
Metres

© Crown Copyright and database right 2024.
Ordnance Survey 100022021

 King Charles III England Coast Path

 Coastal Margin Exclusion

 Coastal Margin



For more information call the Open Access Contact Centre on 0300 060 2091
or visit our website at www.gov.uk/right-of-way-open-access-land/use-your-right-to-roam