

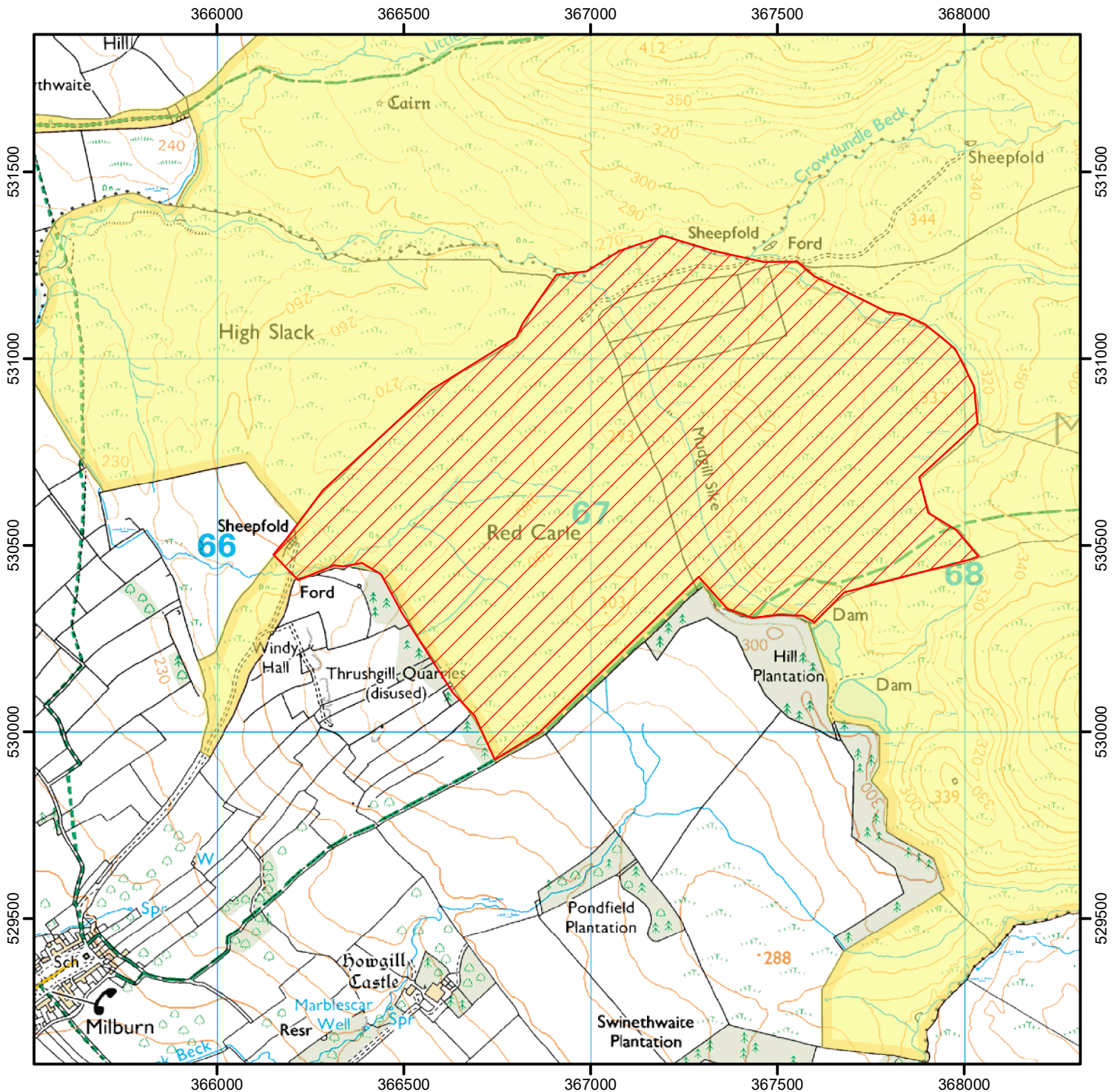


# CROW Open Access: Consultation on review of restriction.

Please see accompanying notice.

Consultation end date: 30 July 2021.

Case Number: 2021079446



0 400 800 Metres

© Crown Copyright and database right 2021. All rights reserved.  
Ordnance Survey Licence number 100022021.



CROW Consultation



Open Access Land



For more information call the Open Access Contact Centre on 0300 060 2091  
or visit our website at [www.gov.uk/right-of-way-open-access-land/use-your-right-to-roam](http://www.gov.uk/right-of-way-open-access-land/use-your-right-to-roam)