

NATURAL
ENGLAND

OCCASIONAL ACCESS EXCLUSION

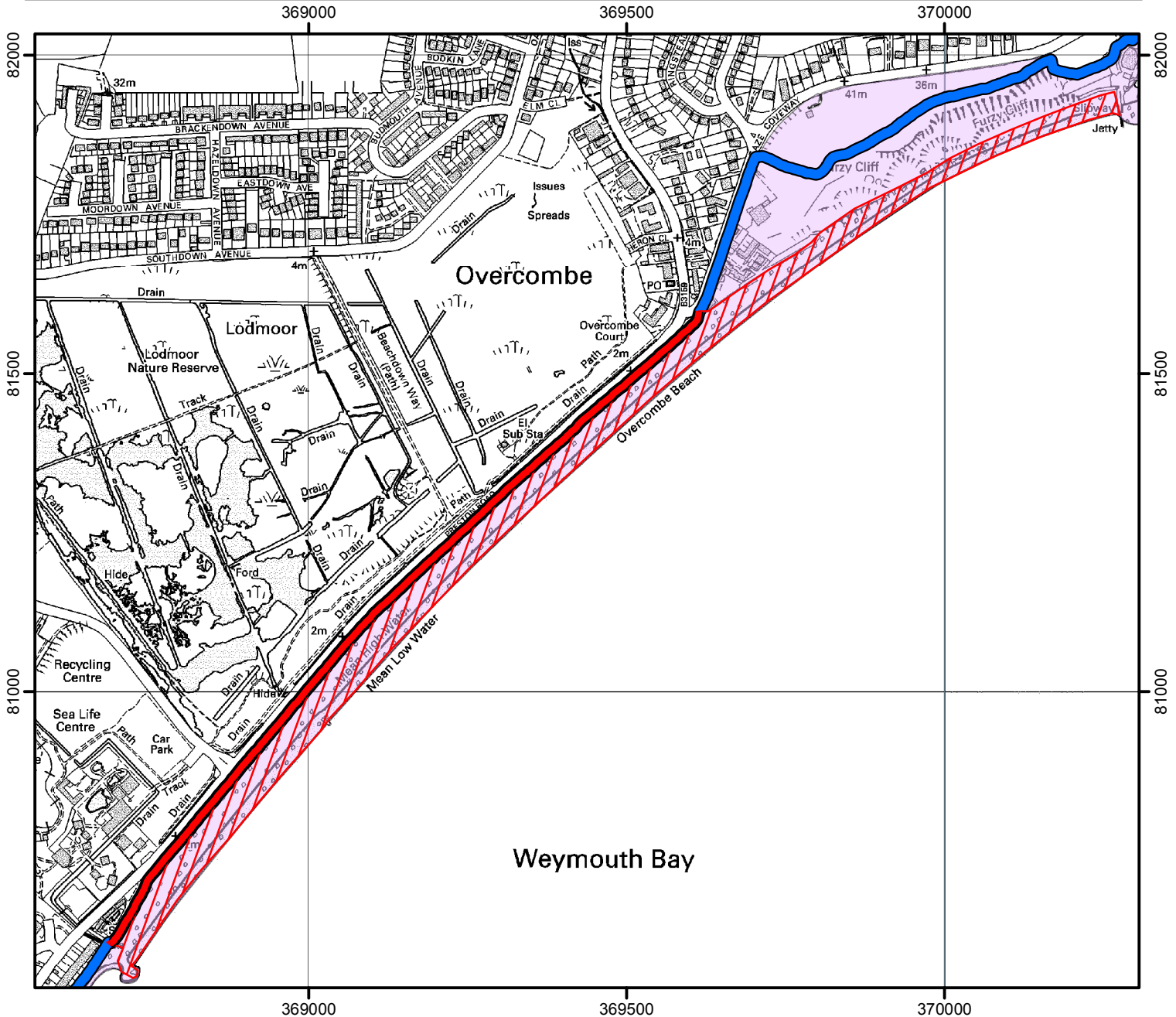
Public access rights to the land hatched in red on the map below are excluded occasionally for maintenance works.




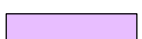
A temporary diversion may apply to any part of the coast path shown in red. Please follow local signs.

This does not affect Public Rights of Way

Location: Preston Beach (Overcombe)

Case Number: 2012056403



-  England Coast Path (maximum permitted extent of closure)
-  England Coast Path
-  Closed access land (maximum permitted extent of access exclusion)
-  Access Land



© Crown Copyright and database right 2017.
Ordnance Survey 100022021

For more information call the Open Access Contact Centre on 0300 060 2091
or visit our website at www.gov.uk/right-of-way-open-access-land/use-your-right-to-roam