



# CROW Open Access: Consultation on review of restriction

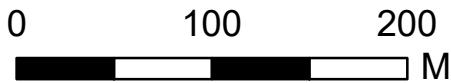
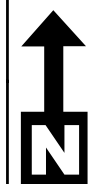
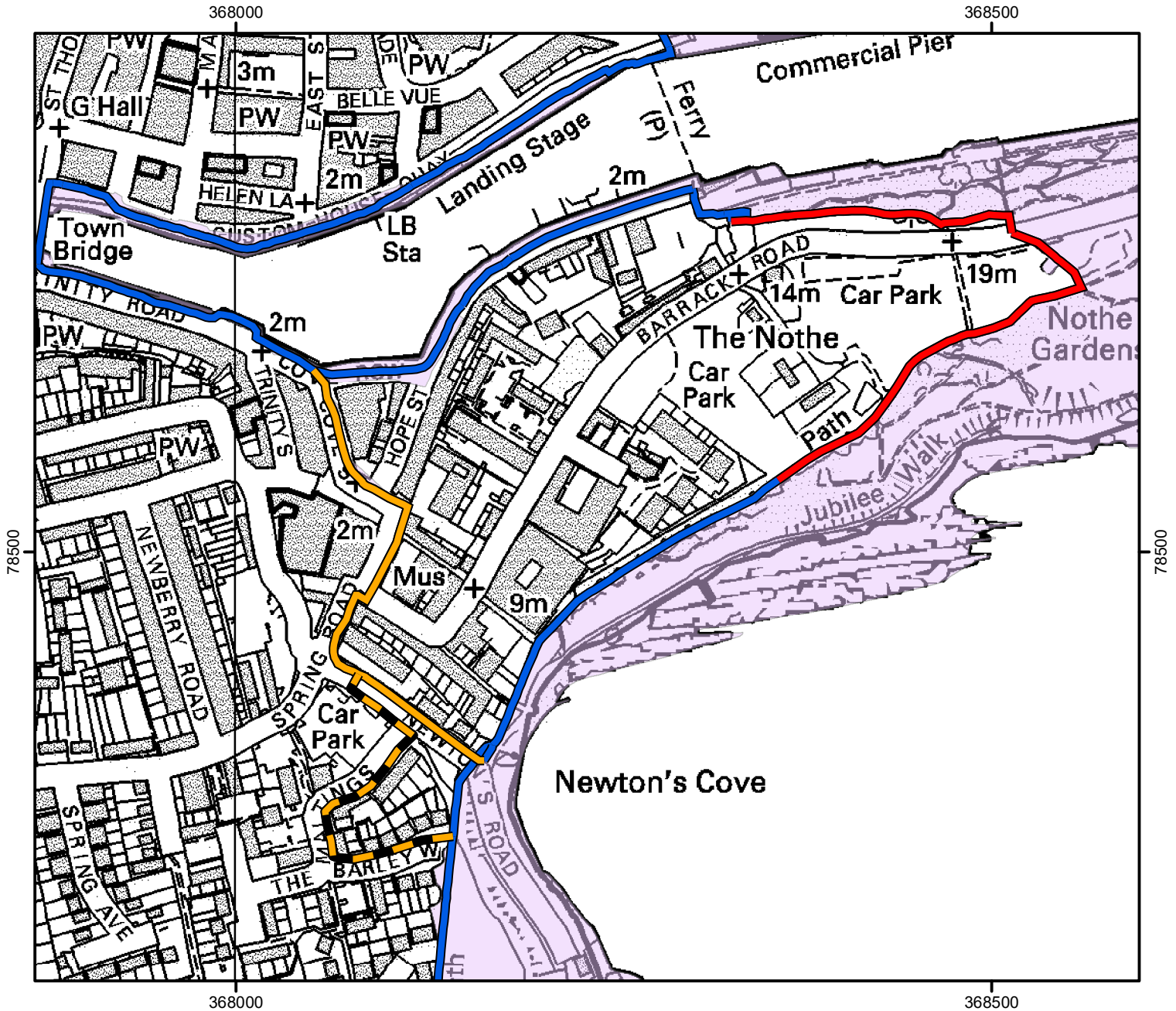
Please see accompanying notice.

This does not affect Public Rights of Way.



Consultation start date: 24 May 2022

end date: 13 June 2022

Case Number: 2012056427



© Crown Copyright and database right 2022.  
Ordnance Survey 100022021

-  England Coast Path - temporary closure
-  England Coast Path
-  Alternative Route
-  Avoiding Steep Steps
-  Coastal Margin



For more information call the Open Access Contact Centre on 0300 060 2091  
or visit our website at [www.gov.uk/right-of-way-open-access-land/use-your-right-to-roam](http://www.gov.uk/right-of-way-open-access-land/use-your-right-to-roam)