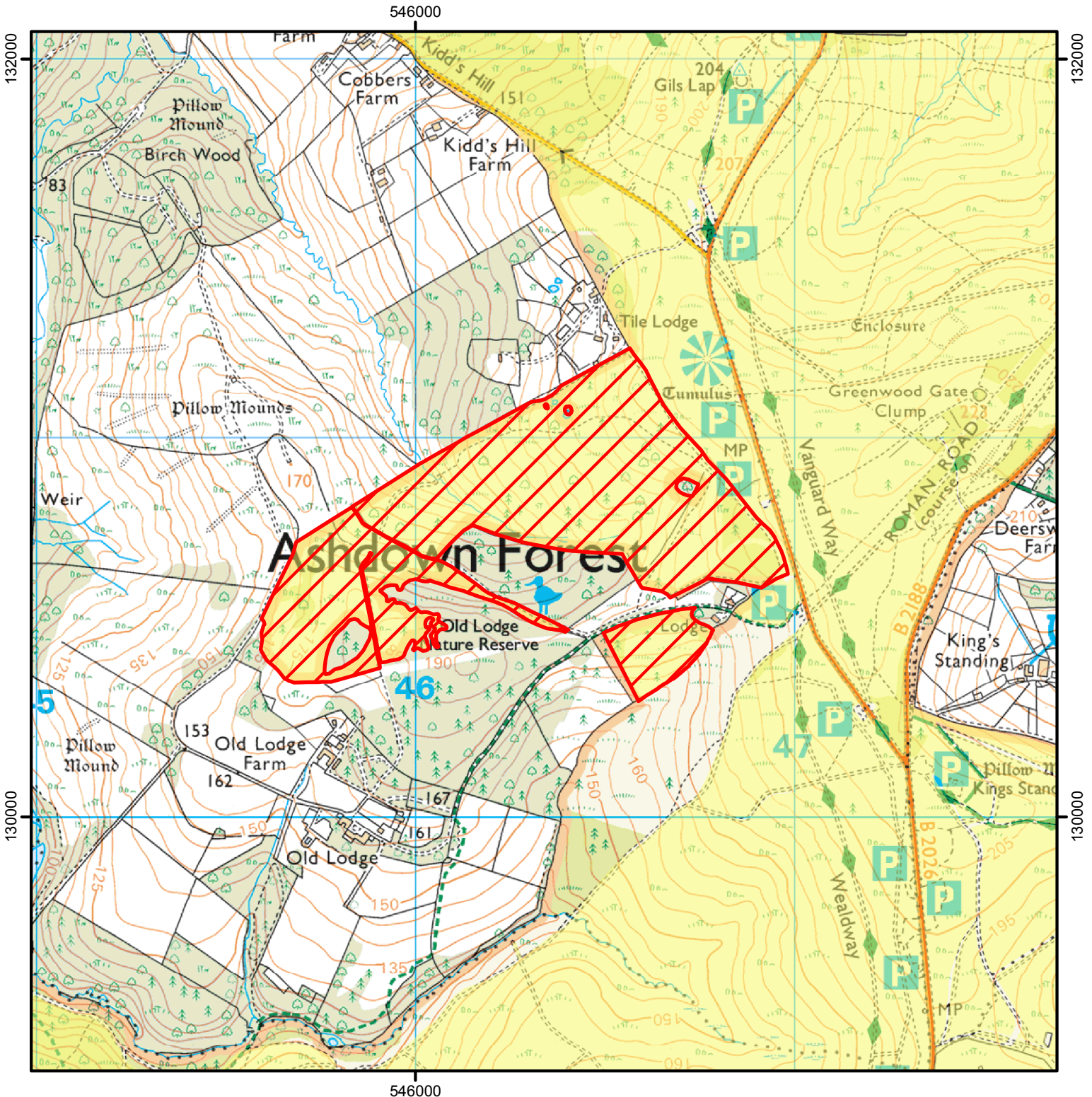


All dogs must be kept on a lead on the land shown hatched on the map below. This is to protect sensitive wildlife.

Case Number: 2009030023

Annually between:  
1st January and 30th September until 2026



0 250 500 1,000 Metres

© Crown Copyright and database right 2020.  
Ordnance Survey 100022021



Restricted Open Access Land



Open Access Land



For more information call the Open Access Contact Centre on 0300 060 2091  
or visit our website at  
[www.gov.uk/guidance/open-access-land-management-rights-and-responsibilities](http://www.gov.uk/guidance/open-access-land-management-rights-and-responsibilities)