

NATURAL
ENGLAND

KEEP DOGS ON A SHORT LEAD

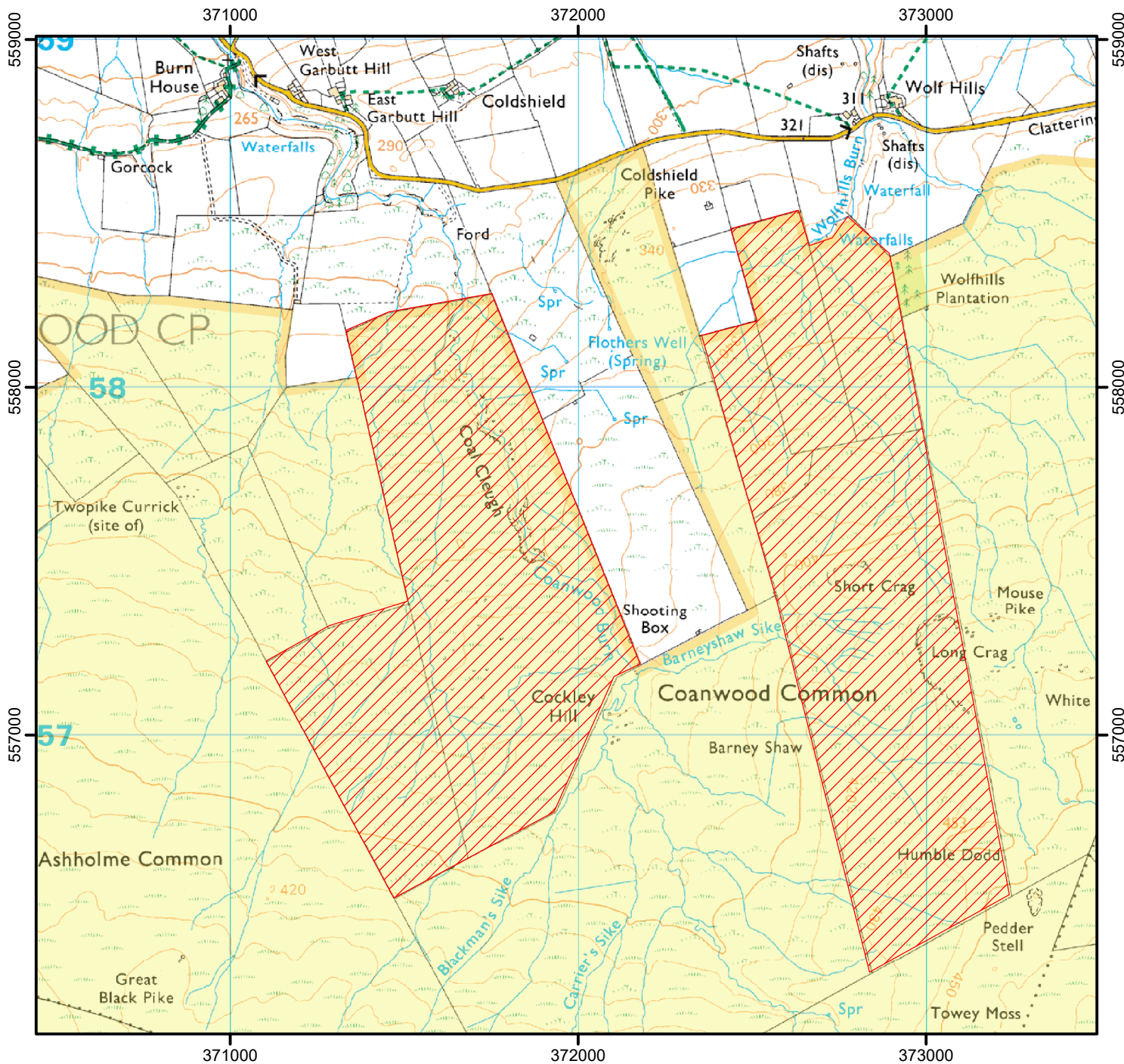
To protect sensitive wildlife, dogs must be kept on a short lead on the open access land shown hatched on the map below.

This does not affect Public Rights of Way where dogs must be kept under effective control.



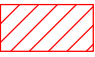
From: 01 August to 31 August annually until 2027.


Case Number: 2008100116




0 500 1,000 Metres

© Crown Copyright and database right 2021. Ordnance Survey 100022021

 Restricted Open Access Land

 Open Access Land



For more information call the Open Access Contact Centre on 0300 060 2091
or visit our website at www.gov.uk/right-of-way-open-access-land/use-your-right-to-roam