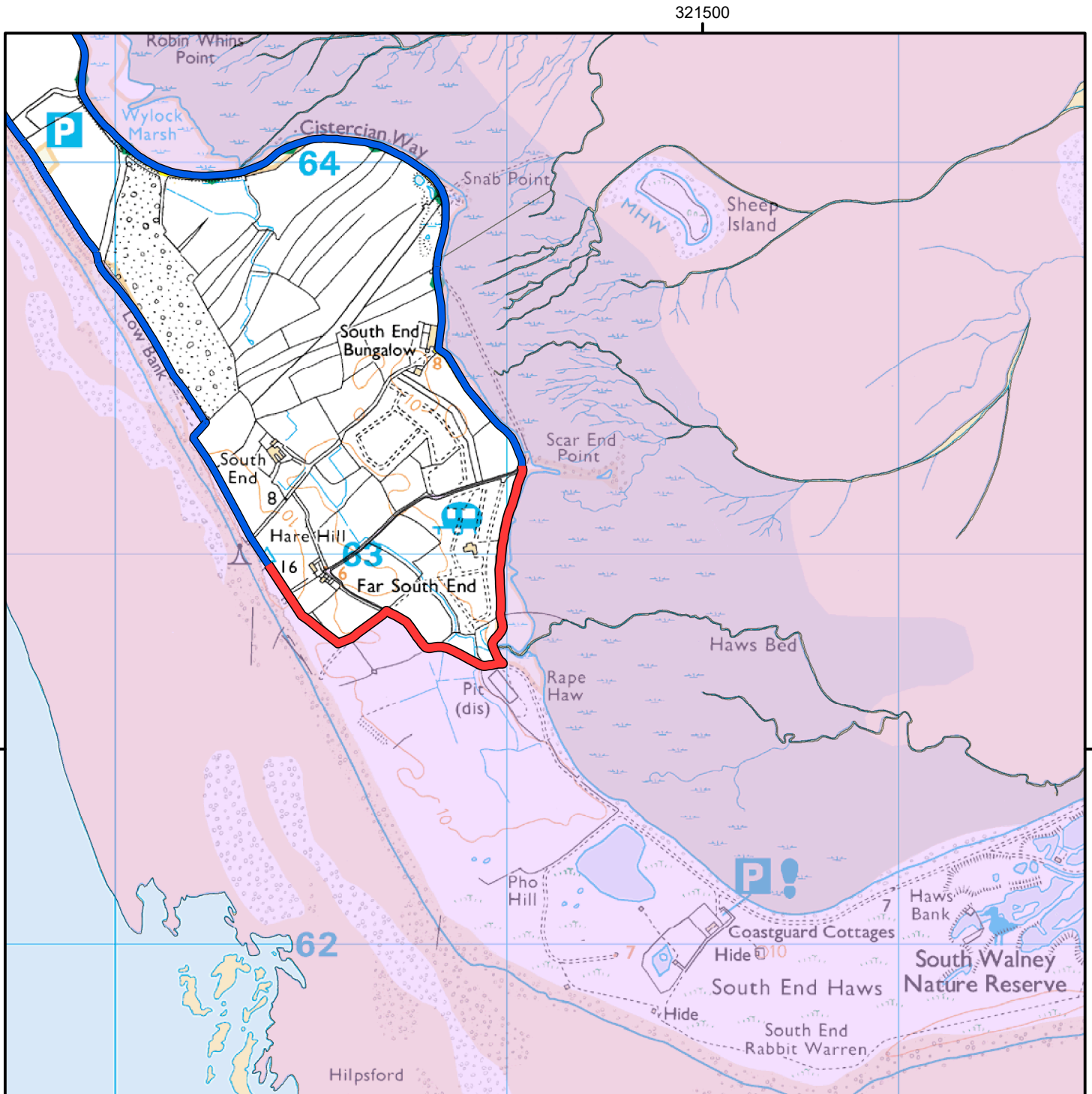



# CROW Open Access: Consultation on review of restriction

Please see accompanying notice.

Consultation end date: 08 January 2025

Case number: 2017038352






0 300 600  
Meters

— King Charles III England Coast Path

— King Charles III ECP Consultation

Coastal Margin



© Crown Copyright and database right 2024. Ordnance Survey 100022021

For more information call the Open Access Contact Centre on 0300 060 2091 or visit our website at [www.gov.uk/right-of-way-open-access-land/use-your-right-to-roam](http://www.gov.uk/right-of-way-open-access-land/use-your-right-to-roam)