

NATURAL
ENGLAND

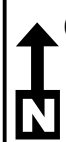
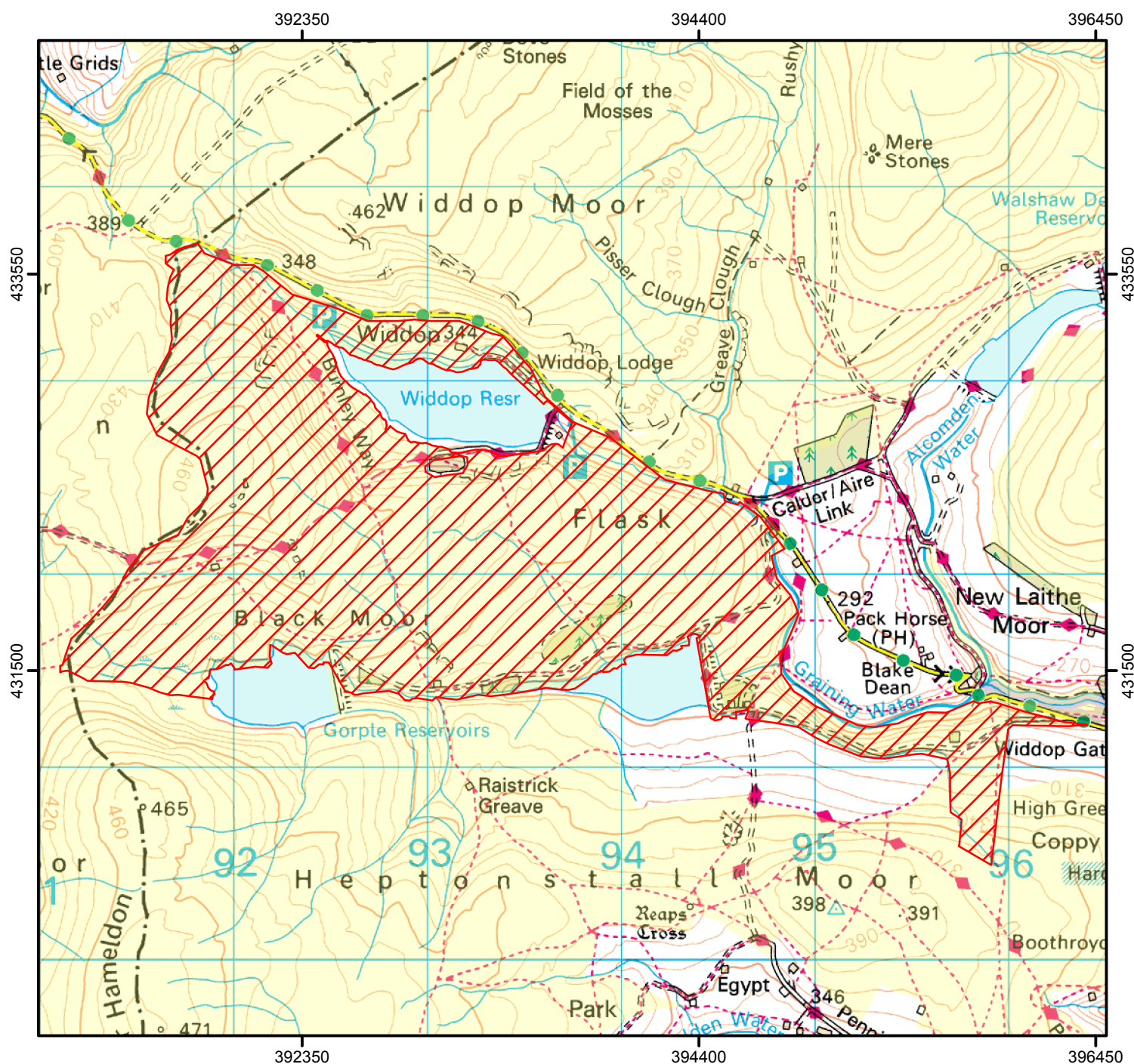
DOGS MUST BE ON A SHORT LEAD



To avoid disturbance to game birds, dogs must be kept on a short lead on the open access land shown hatched on the map below. This does not affect Public Rights of Way

From: 1 March to 10 December (each year until 2025)

Case Number: 2004120067



0 1,000 2,000
M

© Crown Copyright and database right 2019.
Ordnance Survey 100022021



Restricted Open Access Land



Open Access Land



For more information call the Open Access Contact Centre on 0300 060 2091
or visit our website at www.gov.uk/right-of-way-open-access-land/use-your-right-to-roam