



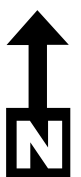
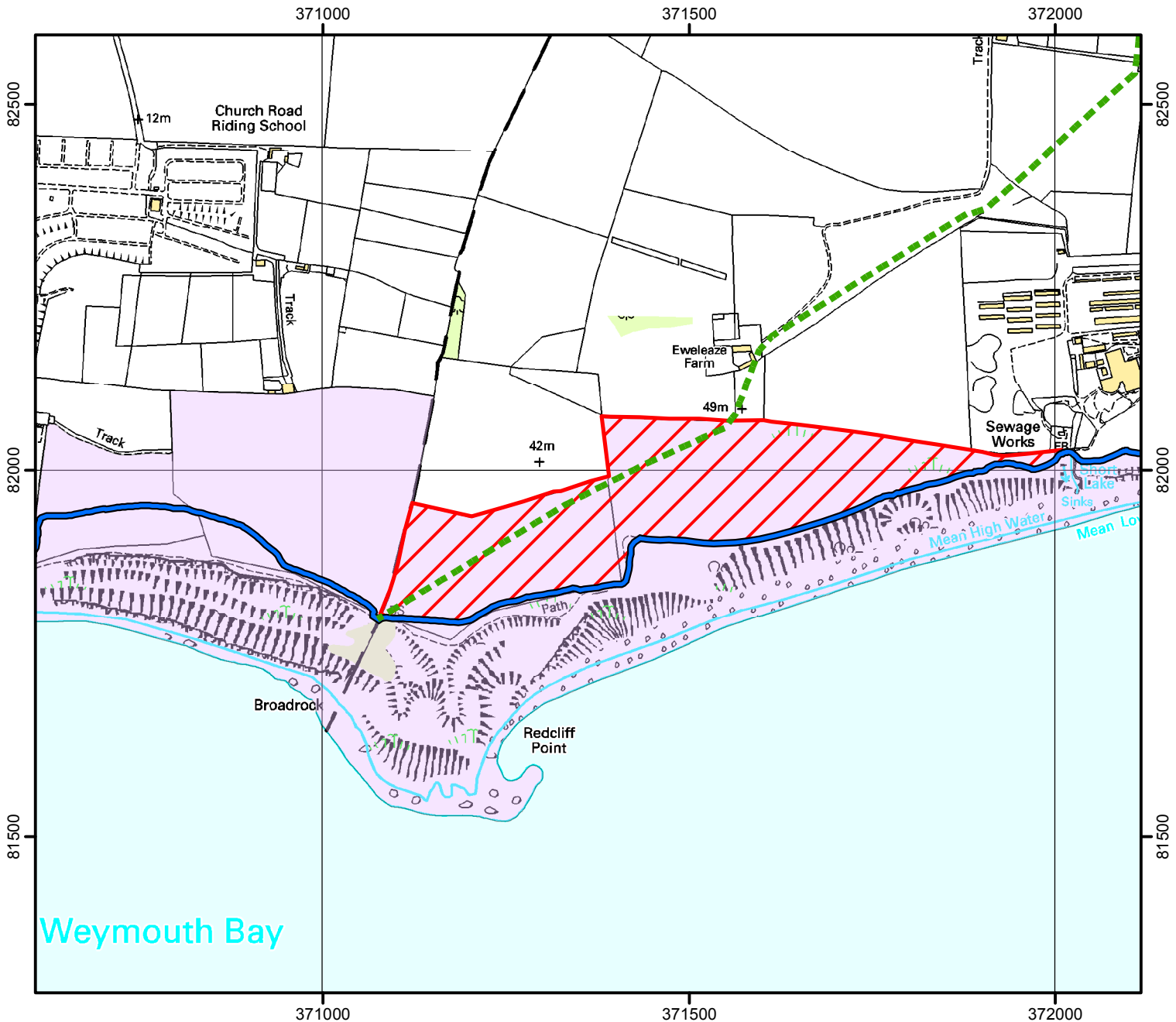
CROW Open Access: Consultation on review of restriction

Please see accompanying notice.

(This does not affect Public Rights of Way)

Consultation start date: 03 April 2017
end date: 21 April 2017

Case Number: 2012056425



© Crown Copyright and database right 2017.
Ordnance Survey 100022021



CROW Consultation



Access Land



England Coast Path



Public Footpath (open as usual)



For more information call the Open Access Contact Centre on 0300 060 2091
or visit our website at www.gov.uk/right-of-way-open-access-land/use-your-right-to-roam