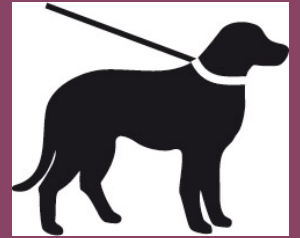


NATURAL
ENGLAND

DOGS MUST BE ON A SHORT LEAD

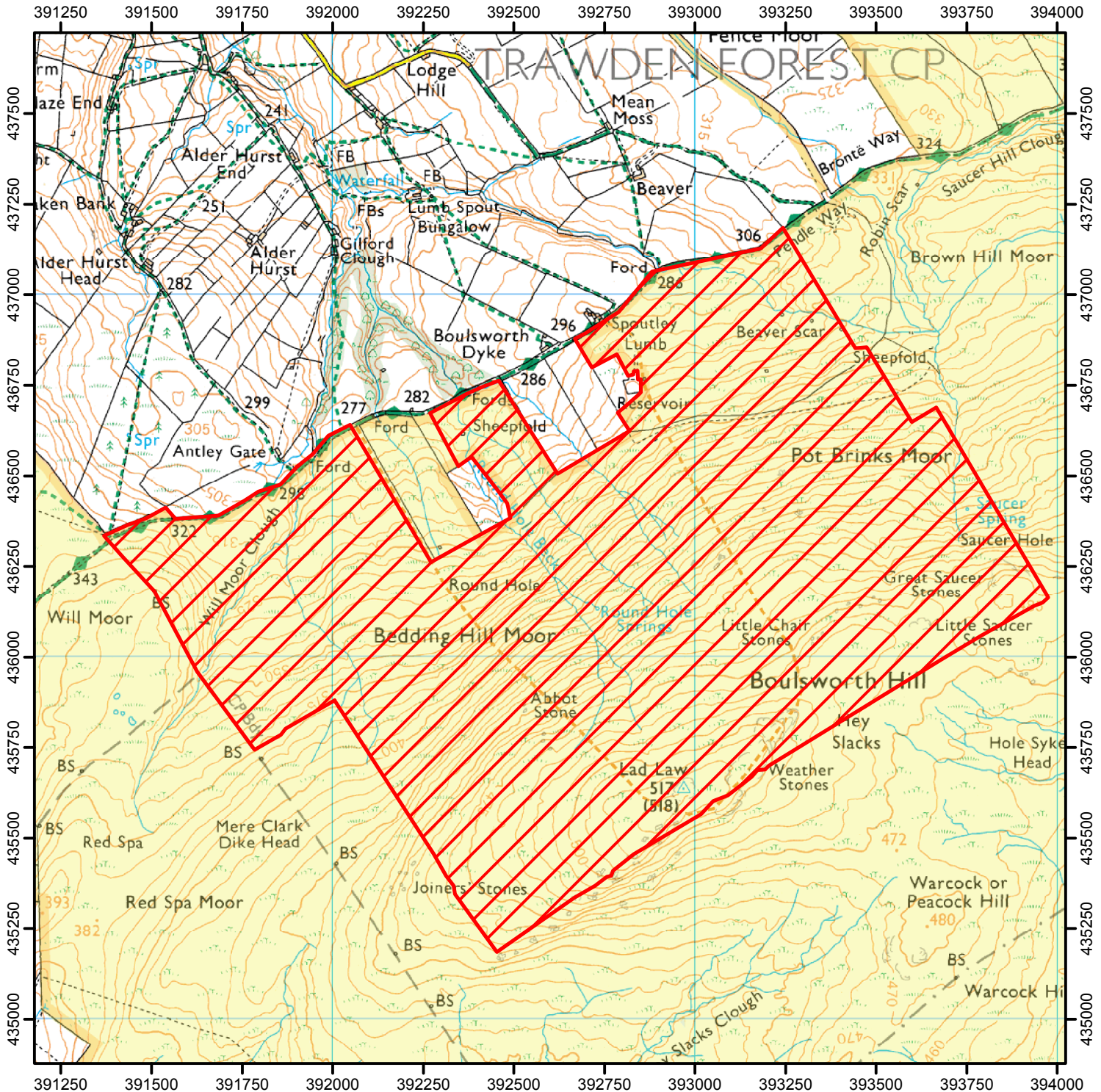


To avoid disturbance to game birds, dogs must be kept on a short lead on the open access land shown hatched on the map below.

From 01 August to 10 December each year until 2025

This does not affect public rights of way.

Case Number: 2009020075



0 600 1,200 Metres

Restricted Open Access Land

Open Access Land

A north arrow pointing up and a circular icon showing a person walking on a path.

© Crown Copyright and database right 2019.
Ordnance Survey 100022021

For more information call the Open Access Contact Centre on 0300 060 2091
or visit our website at www.gov.uk/right-of-way-open-access-land/use-your-right-to-roam