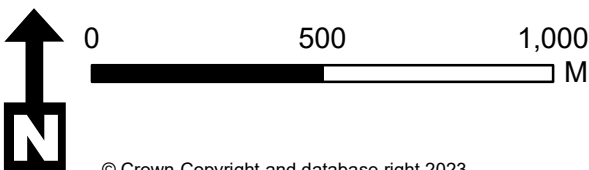
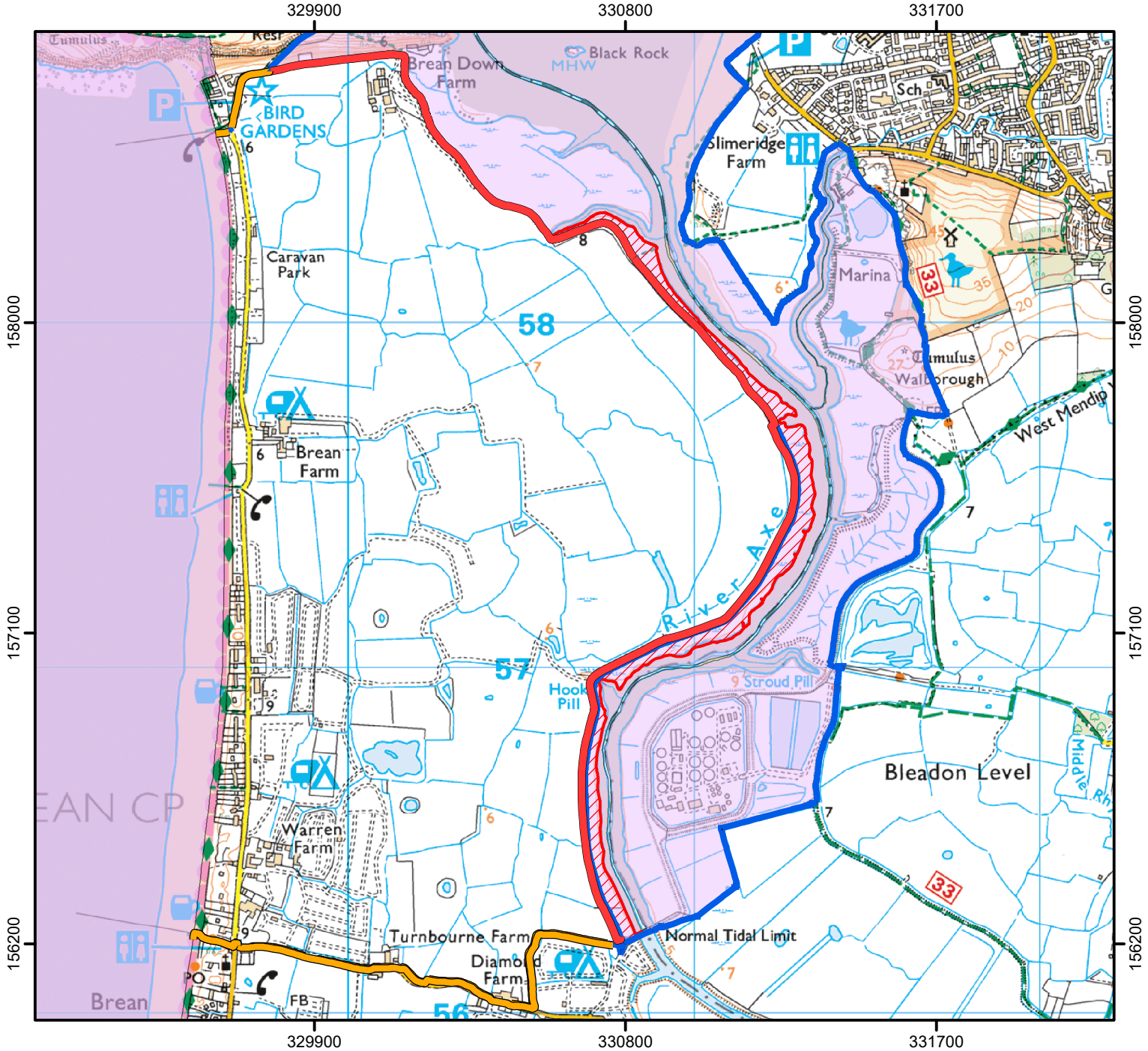


CROW Open Access: consultation on reassessment of restriction.






Please see accompanying notice.

Consultation end date: 18 December 2023

Case Number: 2022049667



© Crown Copyright and database right 2023.
Ordnance Survey 100022021

-  King Charles III England Coast Path
-  King Charles III ECP Exclusion
-  Alternative Route
-  Coastal Margin Exclusion
-  Coastal Margin



For more information call the Open Access Contact Centre on 0300 060 2091
or visit our website at www.gov.uk/right-of-way-open-access-land/use-your-right-to-roam