

**Teesmouth and Cleveland Coast Ramsar UK11068 – Boundary Coordinate Point Table.**

Calculated using ESRI Arc 10.2.2.

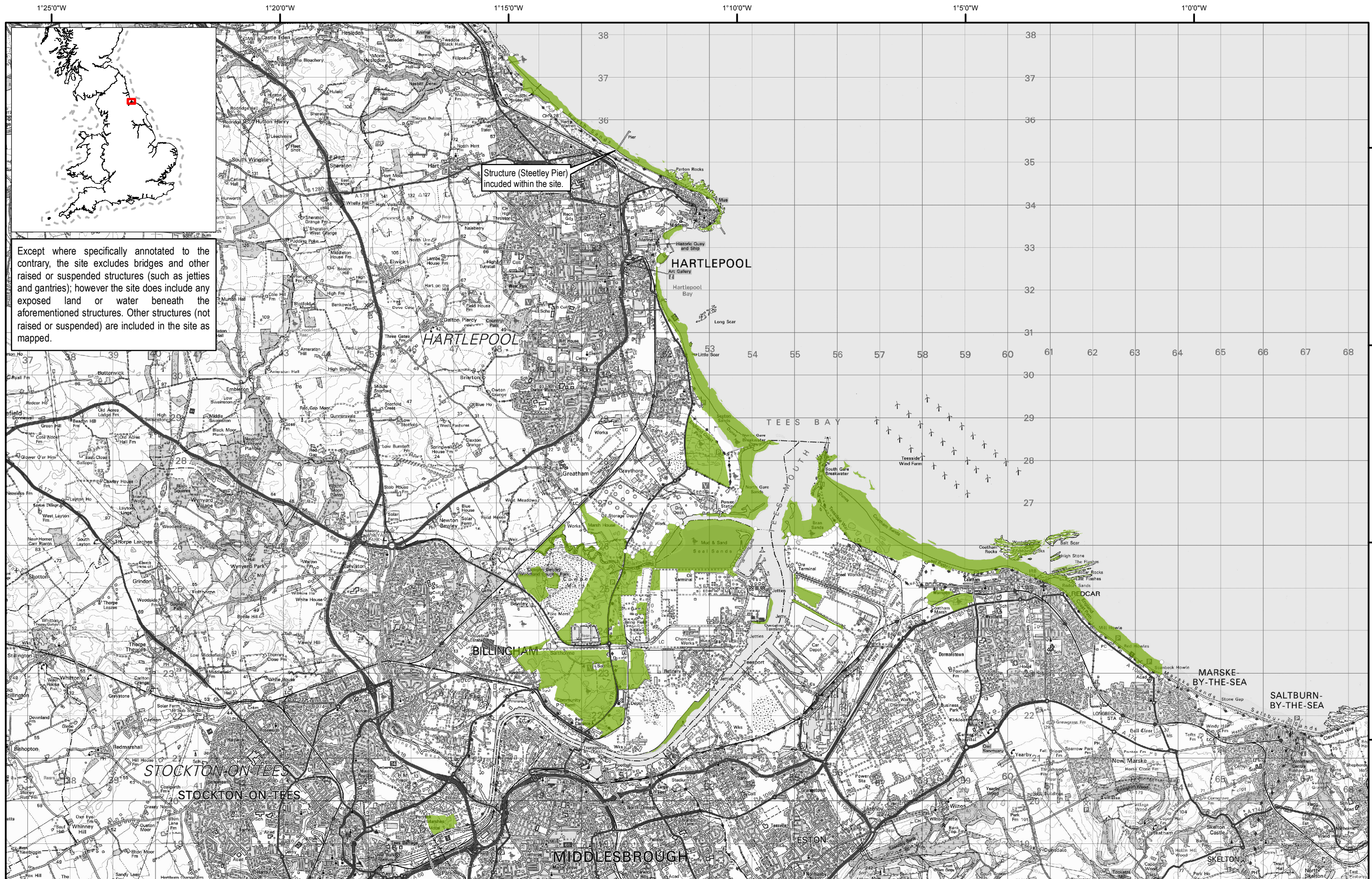
X and Y coordinates are in British National Grid converted from WGS84 using the petroleum transformation.

Latitude and Longitude are plotted in WGS84.

September 2019.

Point Letter	X	Y	Latitude	Longitude
A	448231.8925	537451.5553	54° 43.785' N	1° 15.154' W
B	448357.69	537538.55	54° 43.831' N	1° 15.036' W
C	453238.9	533509.15	54° 41.629' N	1° 10.533' W
D	453219.2632	533498.8965	54° 41.623' N	1° 10.551' W
E	449515.8133	536223.1282	54° 43.115' N	1° 13.970' W
F	449471.7137	536183.9493	54° 43.094' N	1° 14.012' W
G	452418.25	533440.8	54° 41.597' N	1° 11.297' W
H	452414.81	533429.83	54° 41.591' N	1° 11.301' W
I	452018.24	533147.92	54° 41.442' N	1° 11.673' W
J	452006.12	533140.26	54° 41.438' N	1° 11.684' W
K	451889.35	532911.6	54° 41.315' N	1° 11.795' W
L	452027.9	532856.7	54° 41.285' N	1° 11.667' W
M	451796.3166	532601.8929	54° 41.149' N	1° 11.885' W
N	451802.8	532582.03	54° 41.138' N	1° 11.879' W
O	453432.04	526779.24	54° 37.999' N	1° 10.427' W
P	453470.8702	526821.9099	54° 38.022' N	1° 10.390' W
Q	453716.7123	527219.0598	54° 38.235' N	1° 10.157' W
R	453718.296	527291.2061	54° 38.273' N	1° 10.155' W
S	452347.4367	526443.4461	54° 37.825' N	1° 11.438' W
T	452375.29	526427.31	54° 37.816' N	1° 11.413' W
U	454085.4949	526401.4456	54° 37.791' N	1° 9.824' W
V	453632.05	525453.45	54° 37.283' N	1° 10.255' W
W	453598.9351	525452.7759	54° 37.283' N	1° 10.286' W
X	453598	525433.4	54° 37.273' N	1° 10.287' W
Y	453620.4802	525238.5599	54° 37.167' N	1° 10.268' W
Z	453384.6732	525372.6609	54° 37.241' N	1° 10.486' W
AA	452599.6608	525375.7783	54° 37.248' N	1° 11.215' W
AB	452599.9002	525372.1999	54° 37.246' N	1° 11.215' W
AC	449771.01	524388.72	54° 36.733' N	1° 13.853' W
AD	449870.03	524585.56	54° 36.838' N	1° 13.759' W
AE	451027.4232	525864.8389	54° 37.521' N	1° 12.671' W
AF	451208.3458	525735.2208	54° 37.450' N	1° 12.504' W
AG	451431.5597	525952.6329	54° 37.566' N	1° 12.295' W
AH	451650.6	525805.3995	54° 37.485' N	1° 12.093' W
AI	451798.3022	526022.1976	54° 37.601' N	1° 11.953' W
AJ	451832.8	526065.2	54° 37.624' N	1° 11.921' W

Point Letter	X	Y	Latitude	Longitude
AK	452018.8243	526331.8683	54° 37.767' N	1° 11.745' W
AL	452012.1458	526529.1963	54° 37.873' N	1° 11.749' W
AM	452251.7401	526496.35	54° 37.854' N	1° 11.527' W
AN	463624.5908	523261.1801	54° 36.032' N	1° 1.000' W
AO	463628.9502	522921.8499	54° 35.849' N	1° 1.000' W
AP	456001.58	526484.16	54° 37.823' N	1° 8.042' W
AQ	455938.5327	526408.8613	54° 37.783' N	1° 8.101' W
AR	455913.9031	526384.5627	54° 37.770' N	1° 8.125' W
AS	455839.1189	526331.4169	54° 37.742' N	1° 8.195' W
AT	455764.2998	526283.7623	54° 37.717' N	1° 8.265' W
AU	455707.4771	526252.6659	54° 37.701' N	1° 8.318' W
AV	455148.4491	526163.3019	54° 37.656' N	1° 8.838' W
AW	455111.792	526174.9641	54° 37.663' N	1° 8.872' W
AX	455031.6836	526192.1871	54° 37.672' N	1° 8.947' W
AY	454875.58	526267.2	54° 37.714' N	1° 9.091' W
AZ	454872.86	526264.24	54° 37.712' N	1° 9.093' W
BA	458097.7049	524704.9031	54° 36.850' N	1° 6.115' W
BB	458164.7693	524561.6075	54° 36.772' N	1° 6.055' W
BC	454937.95	524772.13	54° 36.907' N	1° 9.050' W
BD	454898.07	524702.87	54° 36.870' N	1° 9.087' W



Except where specifically annotated to the contrary, the site excludes bridges and other raised or suspended structures (such as jetties and gantries); however the site does include any exposed land or water beneath the aforementioned structures. Other structures (not raised or suspended) are included in the site as mapped.


Structure (Steetley Pier) included within the site.

**Ramsar Site  
Teesmouth and Cleveland Coast**

Boundary Map  
Map 1 of 1

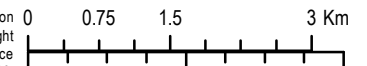
Note: The boundary shown is derived from large scale Ordnance Survey MasterMap, may not match the background detail on this map and where it corresponds with Mean High or Mean Low Water is liable to change. Definitive larger scale maps are available on request.

 Ramsar Site  
2085.21 Ha

 Boundary Points  
(For boundary point coordinates see separate sheet)

Wetland of International Importance, Ramsar Convention.  
Designated Date: 15/08/1995. First Extended 31/03/2000.  
Further Ramsar Site Extension Designated by the Secretary of State for Environment, Food and Rural Affairs on 16/01/2020.

Reproduced by permission of Ordnance Survey on behalf of HMSO. © Crown copyright and database right 2020. All rights reserved. Ordnance Survey Licence number 100022021. © British Crown Copyright 2020. NOT TO BE USED FOR NAVIGATION.  
All rights reserved. Permission Number Defra 012019.001. This product has been derived in part from material obtained from the UK Hydrographic Office with the permission of the Controller of Her Majesty's Stationary Office and UK Hydrographic Office (www.ukho.gov.uk). © Natural England 2020



Scale 1:80,000 at A3



Ramsar Site Code: UK11068  
Area of Ramsar: 2085.21 Ha  
Site Version: 20190904  
Latitude: 54° 37' 38" N  
Longitude: 1° 10' 30" W  
Coordinate System: British National Grid  
Projection: Transverse Mercator  
Grid Ref: N2533260  
Theme ID: 100776  
Map Version: 14.0  
Plotted: 10/07/2020