

Marine Management Organisation

Marine and Coastal Access Act 2009

The Western Channel and South West Marine Protected Areas Fishing Gear Byelaw 2024

The Marine Management Organisation¹, in exercise of the powers conferred by sections 129, 129A and 129B of the Marine and Coastal Access Act 2009², makes the following Byelaw to conserve the following marine fauna and habitats:

- i) Annex 1³ reefs,
- ii) Celtic Sea relict sandbanks,
- iii) Cold water coral reefs,
- iv) Coral gardens,
- v) Deep-sea bed,
- vi) Fan mussel (*Atrina fragilis*),
- vii) Fragile sponge and anthozoan communities on subtidal rocky habitats,
- viii) High energy circalittoral rock,
- ix) Moderate energy circalittoral rock,
- x) Pink sea fan (*Eunicella verrucosa*),
- xi) Sea-pen and burrowing megafauna communities,
- xii) Spiny lobster (*Palinurus elephas*),
- xiii) Subtidal chalk,
- xiv) Subtidal coarse sediment,
- xv) Subtidal mixed sediments,
- xvi) Subtidal mixed sediments mosaic,
- xvii) Subtidal mud, and
- xviii) Subtidal sand.

Commencement

1. This Byelaw comes into force 50 days after the day on which it is confirmed by the Secretary of State.

¹ The Marine Management Organisation was established by the Marine and Coastal Access Act 2009, section 1.

² 2009 c. 23.

³ Annex I (Natural Habitat Types of Community Interest whose Conservation Requires the Designation of Special Areas of Conservation) of Council Directive 92/43/EEC of 21 May 1992 on the conservation of natural habitats and of wild fauna and flora.

Interpretation

2. In this Byelaw:

“the 1983 baselines” means the baselines for the measurement of the breadth of the territorial sea of the United Kingdom as they existed on 25 January 1983 in accordance with the Territorial Waters Order in Council 1964⁴;

“the Act” means the Marine and Coastal Access Act 2009;

“bottom-set nets and lines” means any nets, including but not limited to gillnets, entangling nets and trammel nets, or hooks and lines where, during use, any part of the gear, including weights or anchors is in contact with the seafloor or may come into contact with the seafloor, but does not include a rod and line used for fishing;

“bottom-set nets and lines specified area” means any one of the areas more particularly described in Schedules 15 and 17, which relate to the following areas:

- i) Schedule 15 – South West Deep (East) Marine Conservation Zone and South-West Deep (West) Marine Conservation Zone; and
- ii) Schedule 17 – The Canyons Marine Conservation Zone;

“bottom-towed gear” means any trawls, seines, dredges, or similar gear, including trawls towed on or very close to the seabed, which are actively moved in the water by one or more vessels or by any other mechanised system and in which any part of the gear is designed or rigged to operate on, and be in contact with, the seabed in order to take any sea fisheries resources;

“bottom-towed gear specified area” means the areas more particularly described in Schedules 1 to 19, which relate to the following areas:

- i) Schedule 1 – Cape Bank Marine Conservation Zone and Land’s End and Cape Bank Special Area of Conservation;
- ii) Schedule 2 – East of Haig Fras Marine Conservation Zone;
- iii) Schedule 3 – East of Start Point Marine Conservation Zone;
- iv) Schedule 4 – Greater Haig Fras Marine Conservation Zone and Haig Fras Special Area of Conservation;
- v) Schedule 5 – Hartland Point to Tintagel Marine Conservation Zone;
- vi) Schedule 6 – Isles of Scilly – Bristows to the Stones Marine Conservation Zone;
- vii) Schedule 7 – North-East of Haig Fras Marine Conservation Zone;
- viii) Schedule 8 – North-West of Jones Bank Marine Conservation Zone;
- ix) Schedule 9 – North West of Lundy Marine Conservation Zone;
- x) Schedule 10 – Skerries Bank and Surrounds Marine Conservation Zone;
- xi) Schedule 11 – South Dorset Marine Conservation Zone;
- xii) Schedule 12 – South of Celtic Deep Marine Conservation Zone;

⁴ 1965 III p.6452A; amended by the Territorial Waters (Amendment) Order in Council 1979 III p.2866, the Territorial Sea (Amendment) Order 1996 (S.I. 1996/1628), the Territorial Sea (Amendment) Order 1998 (S.I. 1998/2564), and revoked by the Territorial Sea (Baselines) Order 2014 (S.I. 2014/1353).

- xiii) Schedule 13 – South of the Isles of Scilly Marine Conservation Zone;
- xiv) Schedule 14 – South West Approaches to Bristol Channel Marine Conservation Zone;
- xv) Schedule 15 – South West Deep (East) Marine Conservation Zone and South-West Deep (West) Marine Conservation Zone;
- xvi) Schedule 16 – Start Point to Plymouth Sound and Eddystone Special Area of Conservation;
- xvii) Schedule 17 – The Canyons Marine Conservation Zone;
- xviii) Schedule 18 – West of Wight-Barfleur Marine Conservation Zone; and
- xix) Schedule 19 – Western Channel Marine Conservation Zone;

“ETRS 1989” means the European Terrestrial Reference System 1989;

“inboard, lashed and stowed” means fishing gear is stored on a vessel in such a way that it cannot readily be used for fishing or any other purpose;

“spiny lobster” means lobster of the species *Pailinurus elephas*;

“spiny lobster specified area” means the area more particularly described in Schedule 10, which relates to:

Schedule 10 – Skerries Bank and Surrounds Marine Conservation Zone;

“traps” means any traps, pots, creels or similar gear designed, adapted or intended for deployment on the seafloor to capture and take any sea fisheries resources;

“traps specified area” means any one of the areas more particularly described in Schedules 6 and 16, which relate to the following areas:

- i) Schedule 5 – Hartland Point to Tintagel Marine Conservation Zone; and
- ii) Schedule 16 – Start Point to Plymouth Sound and Eddystone Special Area of Conservation.

3. Co-ordinates used in this byelaw are measured from ETRS 1989 datum.

Prohibition

- 4. A person must not use bottom-set nets and lines in a bottom-set nets and lines specified area.
- 5. A vessel carrying bottom-set nets and lines within a bottom-set nets and lines specified area, must have all bottom-set nets and lines inboard, lashed and stowed.
- 6. A person must not use bottom-towed gear in a bottom-towed gear specified area.
- 7. A vessel carrying bottom-towed gear within a bottom-towed gear specified area must have all bottom-towed gear inboard, lashed and stowed.
- 8. A person must not use traps within a traps specified area.

9. A vessel carrying traps within a traps specified area must have all traps inboard, lashed and stowed.
10. A person must not remove spiny lobster from a spiny lobster specified area, and any spiny lobster caught in a spiny lobster specified area must be immediately returned to the sea.
11. Failure to comply with paragraphs 4, 5, 6, 7, 8, 9 and 10 constitutes an offence contrary to section 139 of the Act.

Exemption

12. Paragraphs 4, 5, 6, 7, 8, 9 and 10 do not apply to a person performing an act which would otherwise constitute an offence against this Byelaw, as set out in paragraph 11, if:
 - a. the act was carried out in accordance with written permission issued by the Marine Management Organisation permitting that act for scientific, stocking or breeding purposes; or
 - b. the act was carried out in accordance with:
 - i. a licence or authorisation issued under the Petroleum Act 1998⁵ or Part 1 of the Energy Act 2008⁶; or
 - ii. a consent issued pursuant to such a licence or authorisation; or
 - iii. a marine licence issued by the Secretary of State under Part 4 of the Act.

Revocation

13. "The Canyons Marine Conservation Zone (Specified Area) Prohibited Fishing Gears Byelaw 2022" made by the Marine Management Organisation on 8 April 2022 is revoked.
14. "The South Dorset Marine Conservation Zone (Specified Area) Bottom Towed Fishing Gear Byelaw 2022" made by the Marine Management Organisation on 8 April 2022 is revoked.

⁵ 1998 c. 17.

⁶ 2008 c. 32.

15. “The Start Point to Plymouth Sound and Eddystone European Marine Site (Specified Areas) Bottom Towed Fishing Gear Byelaw” made by the Marine Management Organisation on 11 December 2013 is revoked.

Citation

16. This Byelaw may be cited as the Western Channel and South West Marine Protected Areas Fishing Gear Byelaw 2024.

Made under the Common Seal of the Marine Management Organisation on:

The Common Seal of the Marine Management Organisation was affixed to this Byelaw in the presence of:

Peter Clark
Director of Operations
Marine Management Organisation

The Secretary of State for Environment, Food and Rural Affairs in exercise of the power conferred by section 130(8) of the Marine and Coastal Access Act 2009 confirms this Byelaw.

A Senior Civil Servant for, and on behalf of, the Secretary of State for Environment, Food and Rural Affairs.

Date:

Schedule 1 – Cape Bank Marine Conservation Zone and Land’s End and Cape Bank Special Area of Conservation

1. The bottom-towed gear specified area means the area enclosed by lines between the co-ordinates in Table 1.

Table 1. Bottom-towed gear specified area relating Cape Bank Marine Conservation Zone and Land’s End and Cape Bank Special Area of Conservation.

| Point | Latitude (degrees and decimal minutes) | Longitude (degrees and decimal minutes) | Line to next point |
|-------|--|---|--|
| 1 | 50° 05.8340' N | 05° 56.0697' W | Geodesic |
| 2 | 50° 09.8731' N | 06° 04.2289' W | Geodesic |
| 3 | 50° 11.9089' N | 06° 06.2493' W | Geodesic |
| 4 | 50° 18.1619' N | 06° 06.2531' W | Geodesic |
| 5 | 50° 18.1618' N | 05° 54.0812' W | Geodesic |
| 6 | 50° 19.3873' N | 05° 52.4001' W | Geodesic |
| 7 | 50° 21.4478' N | 05° 44.4159' W | Geodesic |
| 8 | 50° 19.9756' N | 05° 42.6511' W | Geodesic |
| 9 | 50° 16.9322' N | 05° 48.2333' W | Geodesic |
| 10 | 50° 14.0318' N | 05° 47.7122' W | Due south to a line drawn six nautical miles seaward of the 1983 baselines |
| 11 | 50° 13.9781' N | 05° 47.7122' W | Following a line drawn six nautical miles seaward of the 1983 baselines |
| 12 | 50° 05.8328' N | 05° 53.7975' W | Geodesic |
| 13 | 50° 05.8328' N | 05° 53.8817' W | Geodesic returning to Point 1 |

Cape Bank and Lands End and Cape Bank Marine Protected Areas

Specified area for the prohibition of bottom-towed gear

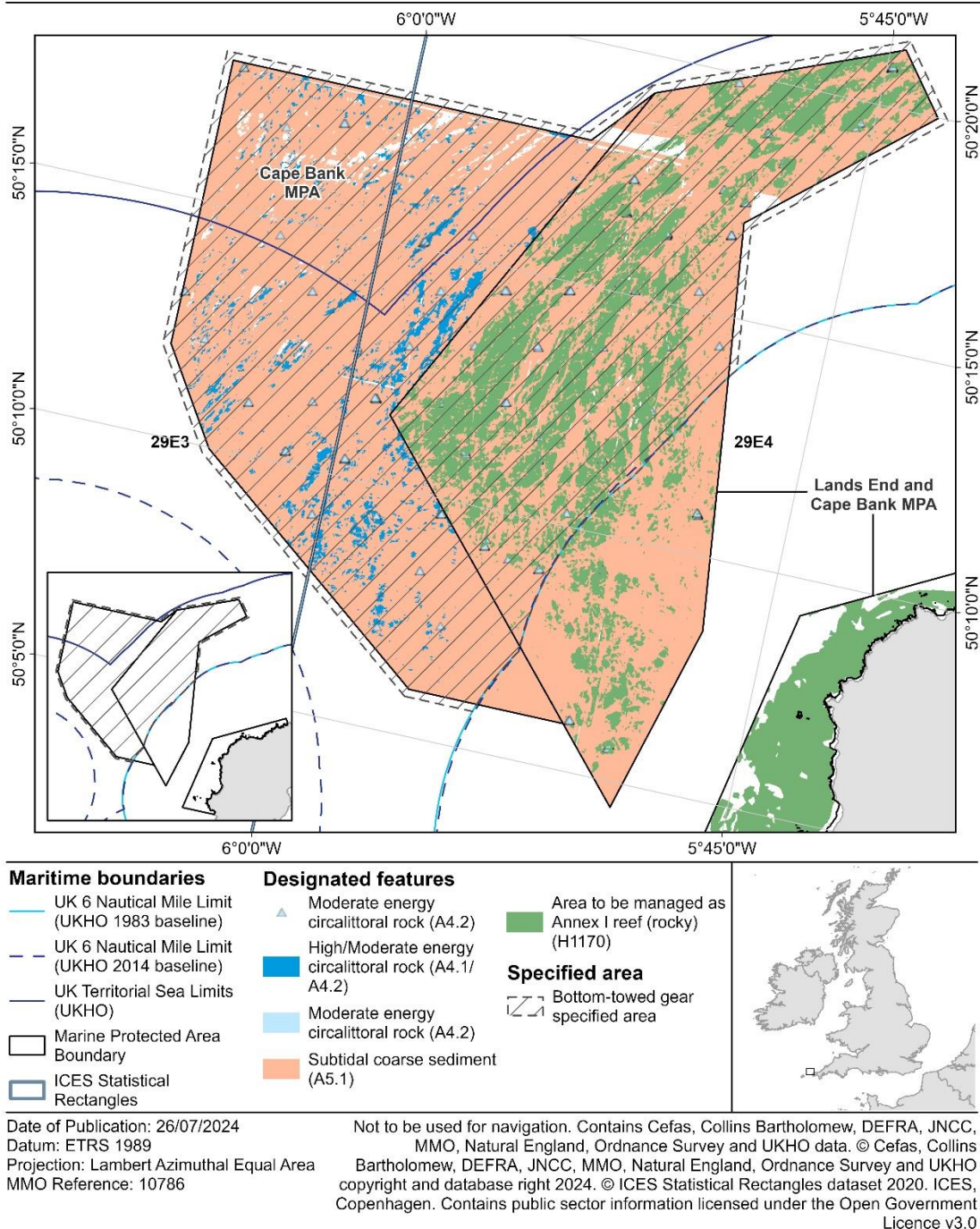


Figure 1. Map of Cape Bank Marine Conservation Zone and Land's End and Cape Bank Special Area of Conservation showing the location of the bottom-towed gear specified area relevant to the site. The coordinates delineating the area's boundaries are provided in Table 1. The UK 6 Nautical Mile Limit (1983 baseline) referred to as 'the 1983 baselines' within this byelaw, defines the seaward limit of inshore fisheries and conservation districts. The UK 6 Nautical Mile Limit (2014 baseline) defines the inshore limit of EU vessel access for vessels with historic access rights (where a fishing vessel licence has been issued by the MMO).

Schedule 2 - East of Haig Fras Marine Conservation Zone

1. The bottom-towed gear specified area means the area enclosed by lines between the co-ordinates in Table 2.

Table 2. Bottom-towed gear specified area relating to East of Haig Fras Marine Conservation Zone.

| Point | Latitude (degrees and decimal minutes) | Longitude (degrees and decimal minutes) | Line to next point |
|-------|--|---|-------------------------------|
| 1 | 50° 24.3632' N | 06° 48.3187' W | Geodesic |
| 2 | 50° 35.4837' N | 06° 47.9711' W | Geodesic |
| 3 | 50° 35.4788' N | 06° 30.5240' W | Geodesic |
| 4 | 50° 24.3713' N | 06° 30.5216' W | Geodesic returning to Point 1 |



Marine
Management
Organisation

East of Haig Fras Marine Protected Area

Specified area for the prohibition of bottom-towed gear

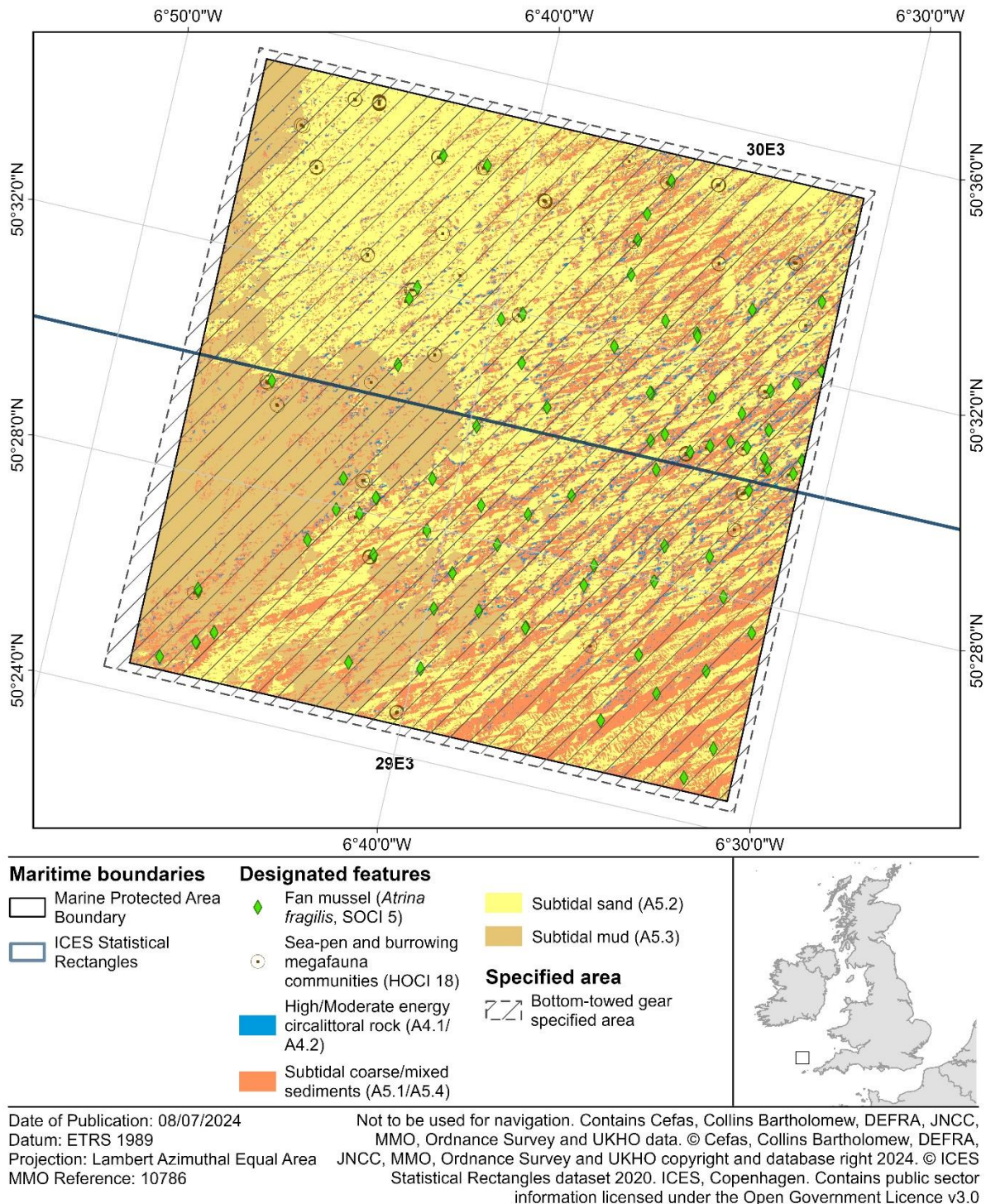


Figure 2. Map of East of Haig Fras Marine Conservation Zone showing the location of the bottom-towed gear specified area relevant to the site. The coordinates delineating the area's boundaries are provided in Table 2.

Schedule 3 – East of Start Point Marine Conservation Zone

1. The bottom-towed gear specified area means the area enclosed by lines between the co-ordinates in Table 3.

Table 3. Bottom-towed gear specified area relating to East of Start Point Marine Conservation Zone.

| Point | Latitude (degrees and decimal minutes) | Longitude (degrees and decimal minutes) | Line to next point |
|-------|--|---|-------------------------------|
| 1 | 50° 20.7995' N | 03° 09.1683' W | Geodesic |
| 2 | 50° 27.7168' N | 03° 09.0597' W | Geodesic |
| 3 | 50° 27.7365' N | 03° 08.3233' W | Geodesic |
| 4 | 50° 29.1575' N | 03° 08.2974' W | Geodesic |
| 5 | 50° 29.1542' N | 03° 03.2513' W | Geodesic |
| 6 | 50° 28.1802' N | 03° 03.2470' W | Geodesic |
| 7 | 50° 28.1774' N | 03° 02.2701' W | Geodesic |
| 8 | 50° 20.8437' N | 03° 02.1821' W | Geodesic returning to Point 1 |



Marine
Management
Organisation

East of Start Point Marine Protected Area

Specified area for the prohibition of bottom-towed gear

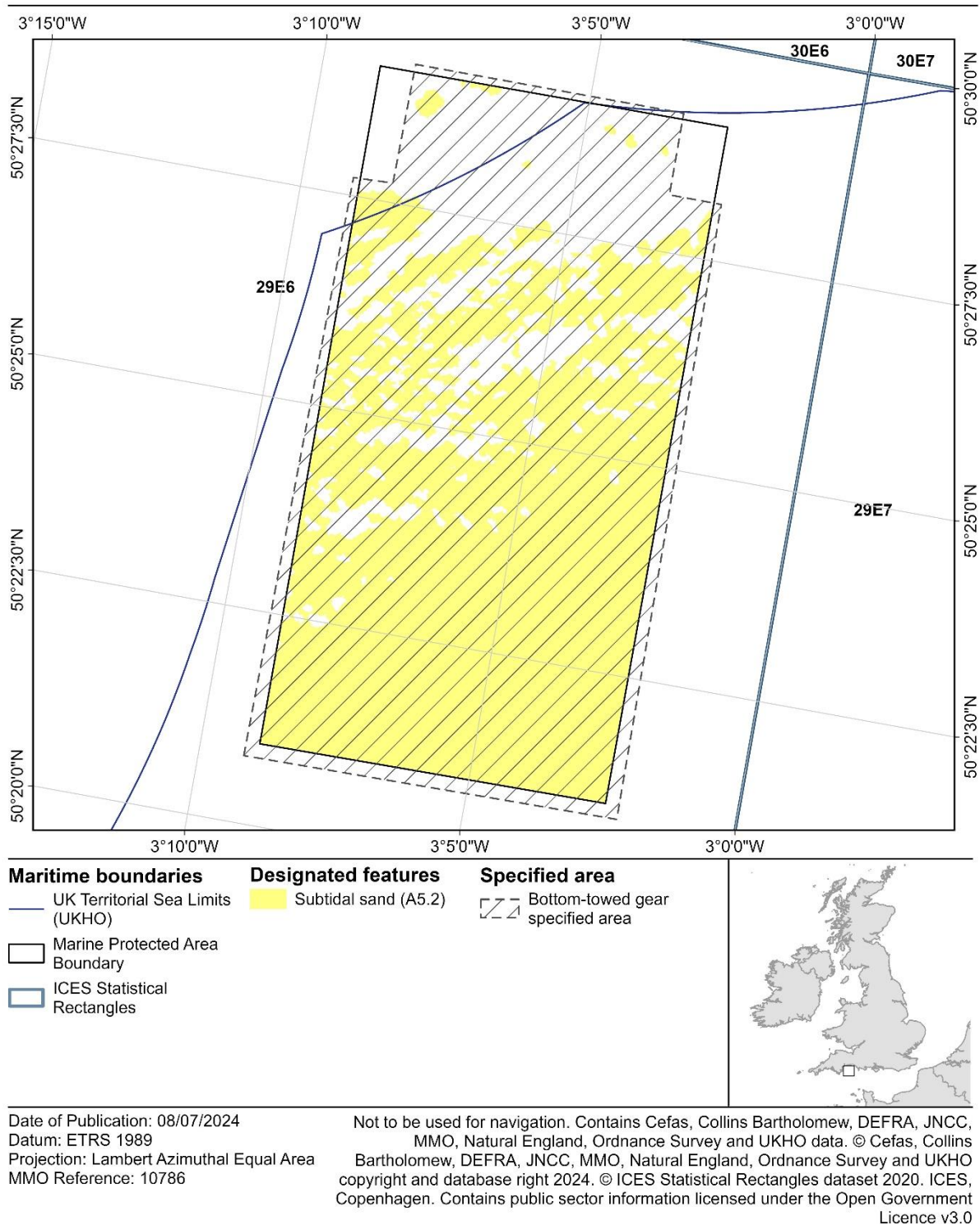


Figure 3. Map of East of Start Point Marine Conservation Zone showing the location of the bottom-towed gear specified area relevant to the site. The coordinates delineating the area's boundaries are provided in Table 3.

Schedule 4 – Greater Haig Fras Marine Conservation Zone and Haig Fras Special Area of Conservation

1. The bottom-towed gear specified area means the area enclosed by lines between the co-ordinates in Table 4.

Table 4. Bottom-towed gear specified area relating to Greater Haig Fras Marine Conservation Zone and Haig Fras Special Area of Conservation.

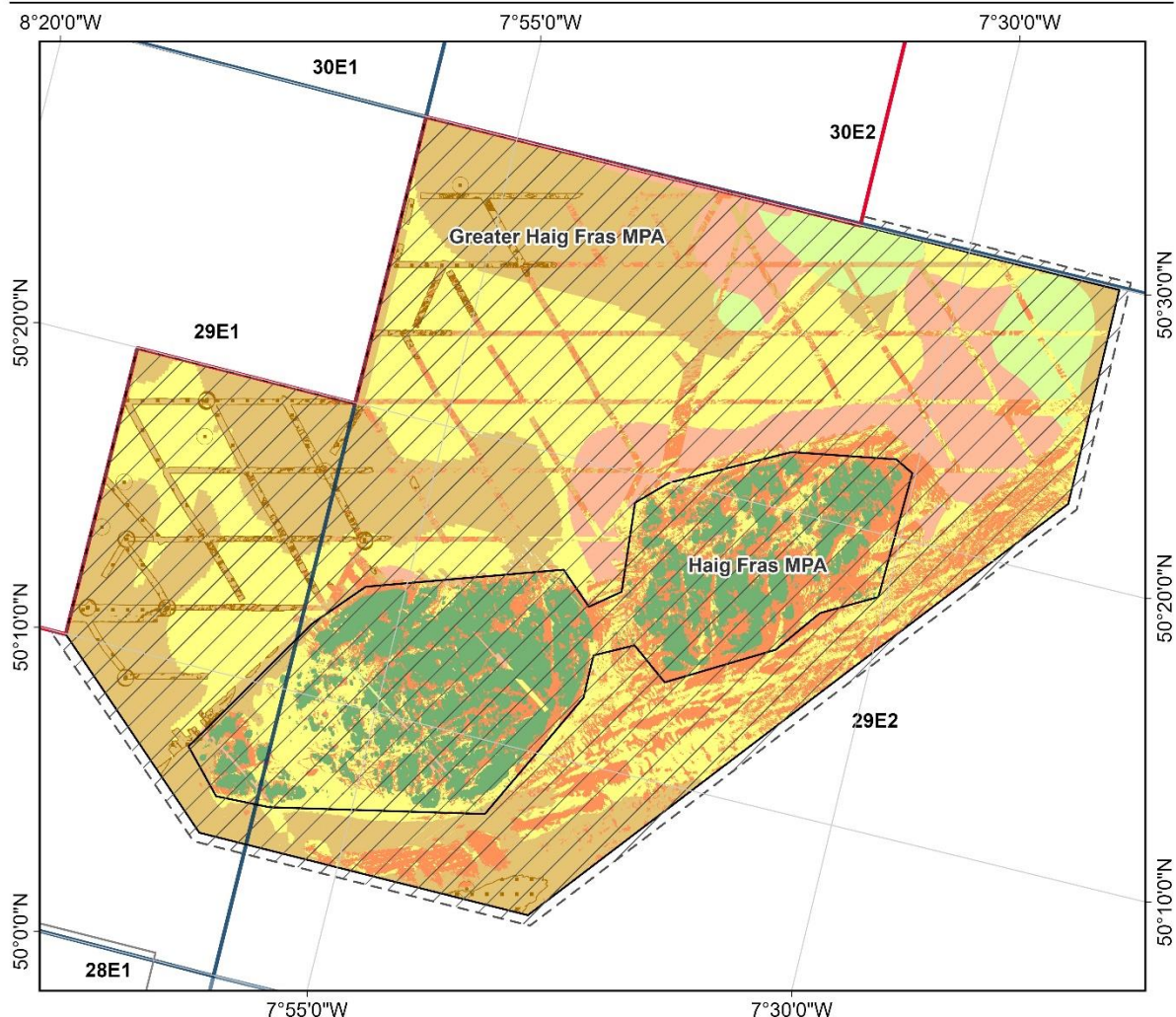
| Point | Latitude (degrees and decimal minutes) | Longitude (degrees and decimal minutes) | Line to next point |
|-------|--|---|--|
| 1 | 50° 30.2925' N | 07° 21.1883' W | Geodesic |
| 2 | 50° 22.3918' N | 07° 21.1874' W | Geodesic |
| 3 | 50° 04.2643' N | 07° 44.3198' W | Geodesic |
| 4 | 50° 04.2682' N | 08° 02.7513' W | Geodesic |
| 5 | 50° 09.9451' N | 08° 12.8736' W | Due north to the UK exclusive economic zone boundary |
| 6 | - | 08° 12.8736' W | Following the UK exclusive economic zone boundary north east to specified latitude |
| 7 | 50° 30.3236' N | - | Geodesic |
| 8 | 50° 30.3236' N | 07° 35.9162' W | Geodesic returning to Point 1 |



Marine
Management
Organisation

Greater Haig Fras and Haig Fras Marine Protected Areas

Specified area for the prohibition of bottom-towed gear



Maritime boundaries

UK Exclusive Economic Zone (2013)

Marine Protected Area Boundary

ICES Statistical Rectangles

Designated features

Sea-pen and burrowing megafauna communities (HOCI 18)

Sea-pen and burrowing megafauna communities (HOCI 18)

Subtidal coarse sediment (A5.1)

Subtidal coarse/mixed sediments (A5.1/A5.4)

Subtidal sand (A5.2)

Subtidal mud (A5.3)

Subtidal mixed sediments (A5.4)

Area to be managed as Annex I reef (rocky) (H1170)

Specified area

Bottom-towed gear specified area



Date of Publication: 23/07/2024
Datum: ETRS 1989
Projection: Lambert Azimuthal Equal Area
MMO Reference: 10786

Not to be used for navigation. Contains Cefas, Collins Bartholomew, DEFRA, JNCC, Marine Institute, MMO, Ordnance Survey and UKHO data. © Cefas, Collins Bartholomew, DEFRA, JNCC, Marine Institute, MMO, Ordnance Survey and UKHO copyright and database right 2024. © ICES Statistical Rectangles dataset 2020. ICES, Copenhagen. © EU SeaMap licensed under CC-BY 4.0 from the EMODnet seabed habitats initiative. Contains public sector information licensed under the Open Government Licence v3.0

Figure 4. Map of Greater Haig Fras Marine Conservation Zone and Haig Fras Special Area of Conservation showing the location of the bottom-towed gear specified area relevant to the site. The coordinates delineating the area's boundaries are provided in Table 4.

Schedule 5 - Hartland Point to Tintagel Marine Conservation Zone

1. The bottom-towed gear specified area means the area enclosed by lines between the co-ordinates in Table 5.
2. The traps specified area means the area enclosed by lines between the co-ordinates in Table 5.

Table 5. Bottom-towed gear specified area and traps specified area relating to Hartland Point to Tintagel Marine Conservation Zone.

| Point | Latitude (degrees and decimal minutes) | Longitude (degrees and decimal minutes) | Line to next point |
|-------|--|---|---|
| 1 | 50° 50.3004' N | 04° 50.7120' W | Geodesic |
| 2 | 50° 50.3005' N | 04° 43.2103' W | Due east to a line drawn six nautical miles seaward of the 1983 baselines |
| 3 | 50° 50.3005' N | 04° 43.1246' W | Following a line drawn six nautical miles seaward of the 1983 baselines |
| 4 | 50° 45.3792' N | 04° 50.6519' W | Geodesic |
| 5 | 50° 45.4336' N | 04° 50.6519' W | Geodesic returning to Point 1 |



Marine
Management
Organisation

Hartland Point to Tintagel

Marine Protected Area

Specified areas for the prohibition of bottom-towed gear and traps

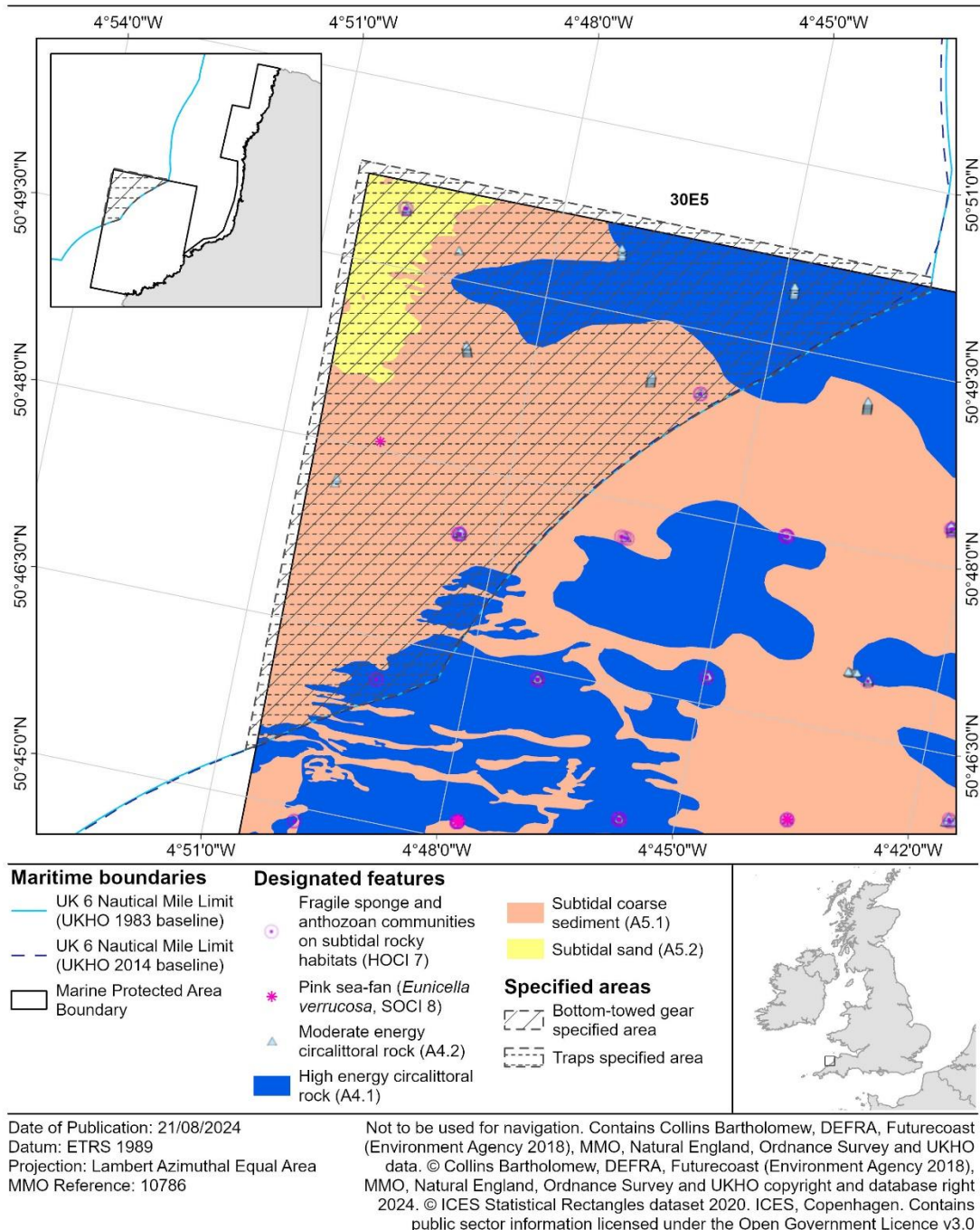


Figure 5. Map of Hartland Point to Tintagel Marine Conservation Zone showing the locations of the bottom-towed gear specified area and the traps specified area relevant to the site. The coordinates delineating the areas' boundaries are provided in Table 5. The UK 6 Nautical Mile Limit (1983 baseline) referred to as 'the 1983 baselines' within this byelaw, defines the seaward limit of inshore fisheries and conservation districts. The UK 6 Nautical Mile Limit (2014 baseline) defines the inshore limit of EU vessel access for vessels with historic access rights (where a fishing vessel licence has been issued by the MMO).

Schedule 6 – Isles of Scilly - Bristows to the Stones Marine Conservation Zone

1. The bottom-towed gear specified area means the area enclosed by lines between the co-ordinates in Table 6.

Table 6. Bottom-towed gear specified area relating to Isles of Scilly - Bristows to the Stones Marine Conservation Zone.

| Point | Latitude (degrees and decimal minutes) | Longitude (degrees and decimal minutes) | Line to next point |
|-------|--|---|---|
| 1 | 50° 03.0540' N | 06° 09.2142' W | Geodesic |
| 2 | 50° 03.0804' N | 06° 08.7303' W | Geodesic |
| 3 | 50° 03.0232' N | 06° 08.3990' W | Geodesic |
| 4 | 50° 01.8801' N | 06° 06.8619' W | Geodesic |
| 5 | 50° 01.5649' N | 06° 07.1039' W | Due west to a line drawn six nautical miles seaward of the 1983 baselines |
| 6 | 50° 01.5649' N | 06° 07.1923' W | Following a line drawn six nautical miles seaward of the 1983 baselines |
| 7 | 50° 02.9487' N | 06° 09.4389' W | Geodesic |
| 8 | 50° 02.9999' N | 06° 09.4389' W | Geodesic returning to Point 1 |

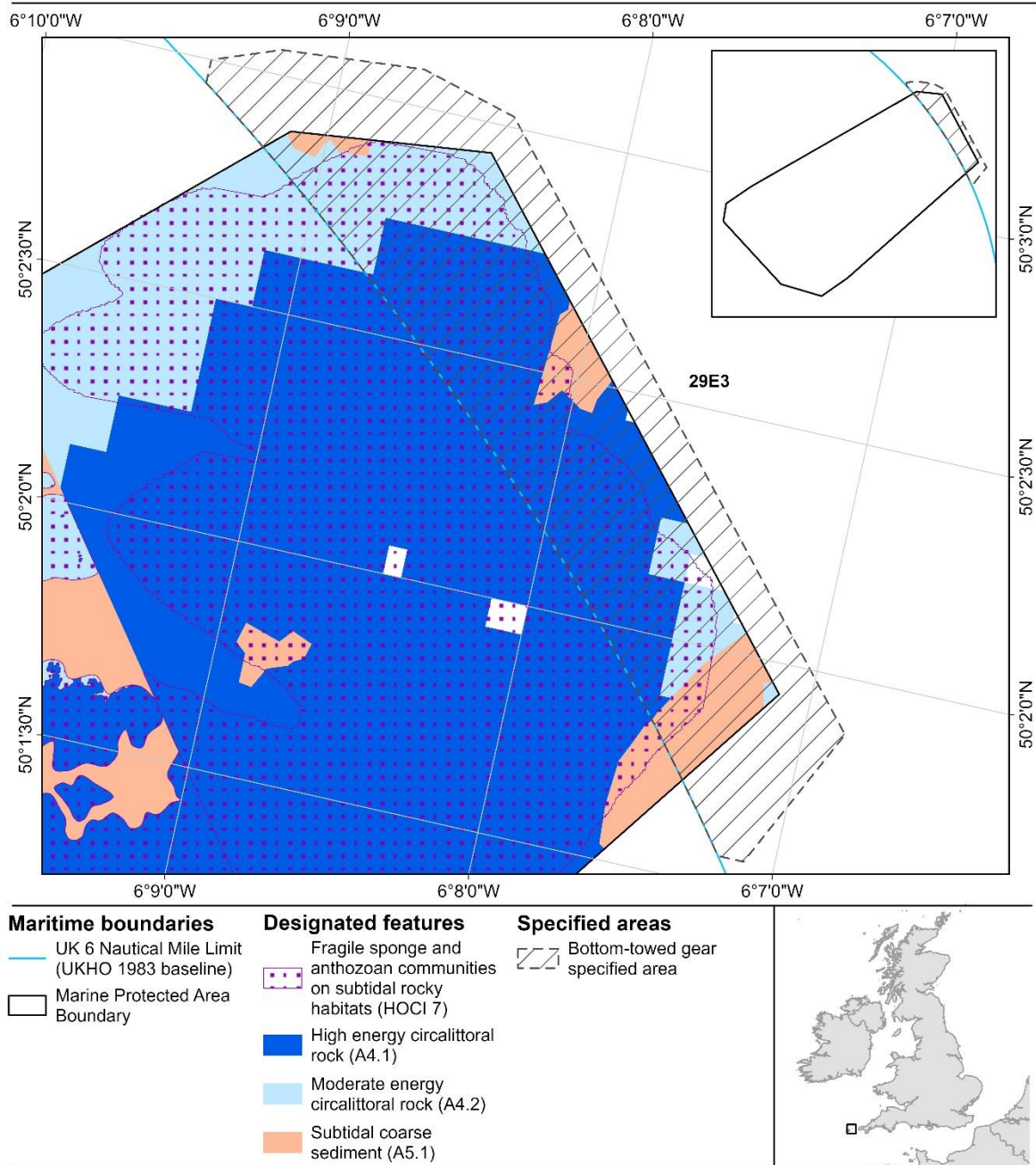


Marine
Management
Organisation

Isles of Scilly - Bristows to the Stones

Marine Protected Area

Specified area for the prohibition of bottom-towed gear



Date of Publication: 01/11/2024

Datum: ETRS 1989

Projection: Lambert Azimuthal Equal Area

MMO Reference: 10786

Not to be used for navigation. Contains Collins Bartholomew, DEFRA, MMO, Natural England, Ordnance Survey and UKHO data. © Collins Bartholomew, DEFRA, MMO, Natural England, Ordnance Survey and UKHO copyright and database right 2024. © ICES Statistical Rectangles dataset 2020. ICES, Copenhagen. Contains public sector information licensed under the Open Government Licence v3.0

Figure 6. Map of Isles of Scilly - Bristows to the Stones Marine Conservation Zone showing the location of the bottom-towed gear specified area relevant to the site. The coordinates delineating the area's boundaries are provided in Table 6. The UK 6 Nautical Mile Limit (1983 baseline) referred to as 'the 1983 baselines' within this byelaw, defines the seaward limit of inshore fisheries and conservation districts.

Schedule 7 – North-East of Haig Fras Marine Conservation Zone

1. The bottom-towed gear specified area means the area enclosed by lines between the co-ordinates in Table 7.

Table 7. Bottom-towed gear specified area relating to North-East of Haig Fras Marine Conservation Zone.

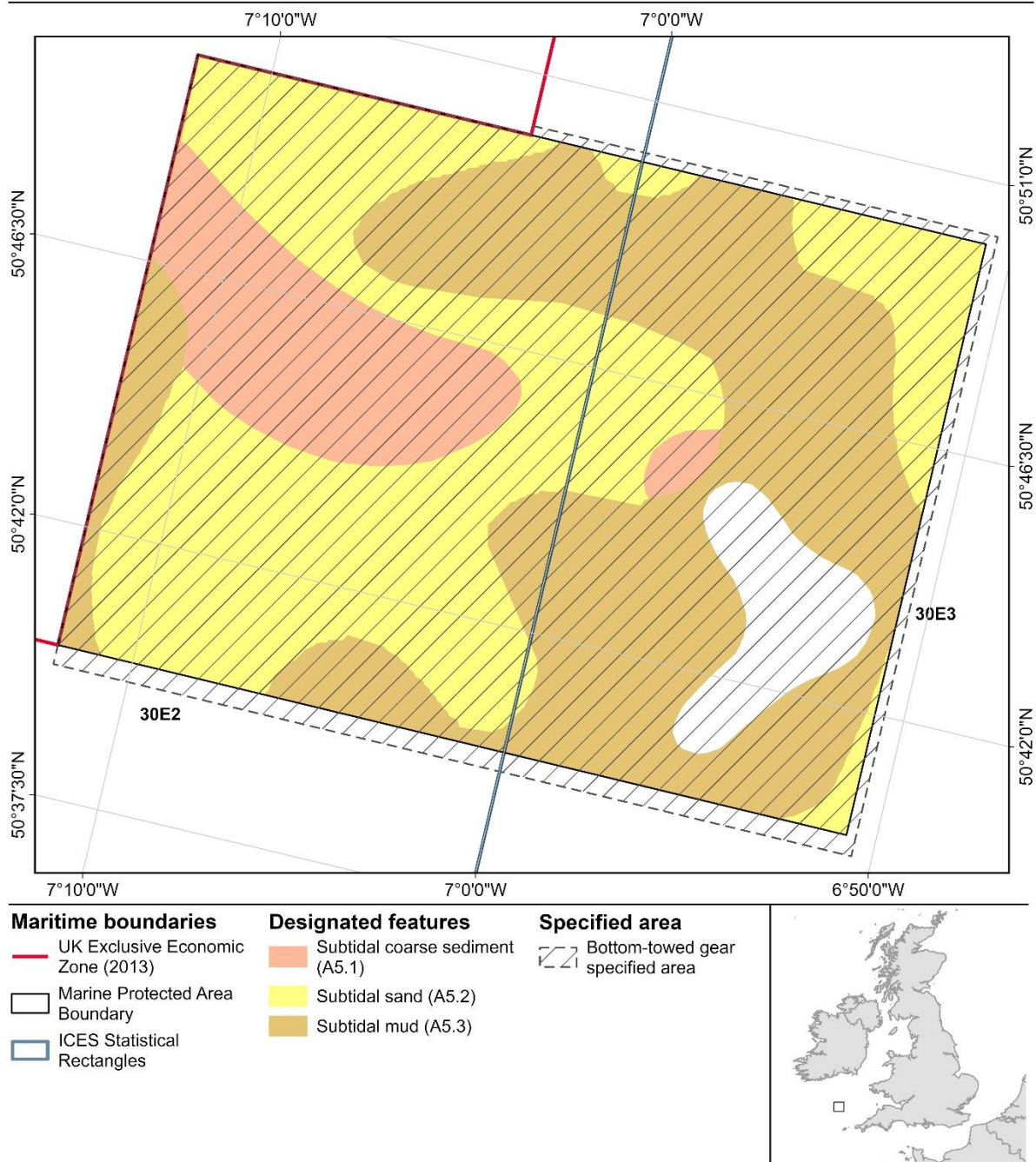
| Point | Latitude (degrees and decimal minutes) | Longitude (degrees and decimal minutes) | Line to next point |
|-------|--|---|--|
| 1 | 50° 50.1425' N | 06° 50.4631' W | Geodesic |
| 2 | 50° 39.6456' N | 06° 50.5320' W | Geodesic |
| 3 | 50° 39.6760' N | 07° 12.0000' W | Due north to the UK exclusive economic zone boundary |
| 4 | - | 07° 12.0000' W | Following the UK exclusive economic zone boundary north east to specified latitude |
| 5 | 50° 50.1538' N | - | Geodesic |
| 6 | 50° 50.1538' N | 07° 02.8985' W | Geodesic returning to Point 1 |



Marine
Management
Organisation

North-East of Haig Fras Marine Protected Area

Specified area for the prohibition of bottom-towed gear



Date of Publication: 23/07/2024
Datum: ETRS 1989
Projection: Lambert Azimuthal Equal Area
MMO Reference: 10786

Not to be used for navigation. Contains Collins Bartholomew, DEFRA, JNCC, MMO, Ordnance Survey and UKHO data. © Collins Bartholomew, DEFRA, JNCC, MMO, Ordnance Survey and UKHO copyright and database right 2024. © ICES Statistical Rectangles dataset 2020. ICES, Copenhagen. © EU SeaMap licensed under CC-BY 4.0 from the EMODnet seabed habitats initiative. Contains public sector information licensed under the Open Government Licence v3.0

Figure 7. Map of North-East of Haig Fras Marine Conservation Zone showing the location of the bottom-towed gear specified area relevant to the site. The coordinates delineating the area's boundaries are provided in Table 7.

Schedule 8 – North-West of Jones Bank Marine Conservation Zone

1. The bottom-towed gear specified area means the area enclosed by lines between the coordinates in Table 8.

Table 8. Bottom-towed gear specified area relating to North-West of Jones Bank Marine Conservation Zone.

| Point | Latitude (degrees and decimal minutes) | Longitude (degrees and decimal minutes) | Line to next point |
|-------|--|---|-------------------------------|
| 1 | 49° 49.2327' N | 08° 02.8944' W | Geodesic |
| 2 | 49° 49.2186' N | 08° 20.4261' W | Geodesic |
| 3 | 50° 00.5933' N | 08° 20.5079' W | Geodesic |
| 4 | 50° 00.6092' N | 08° 02.7789' W | Geodesic returning to Point 1 |



Marine
Management
Organisation

North-West of Jones Bank

Marine Protected Area

Specified area for the prohibition of bottom-towed gear

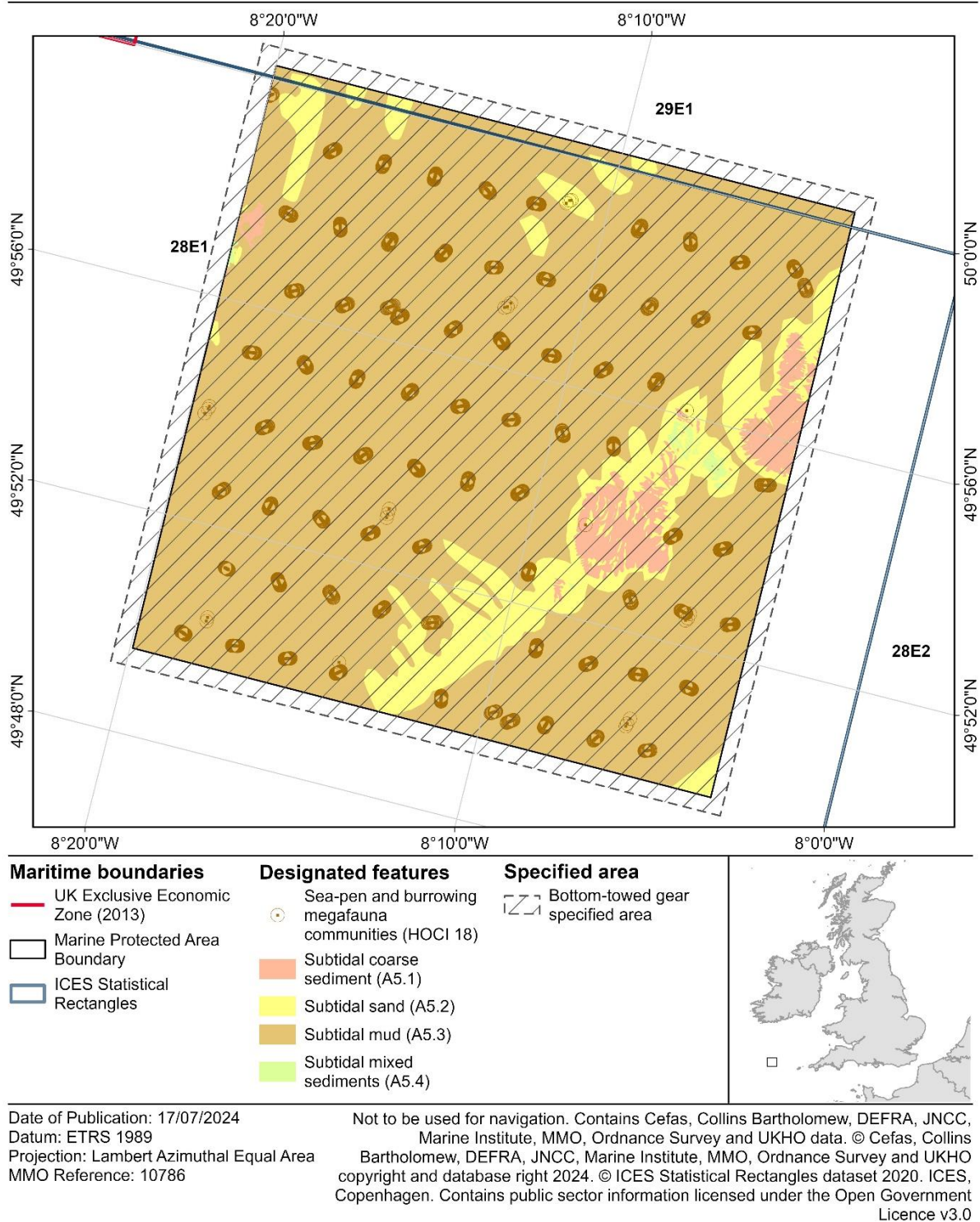


Figure 8. Map of North-West of Jones Bank Marine Conservation Zone showing the location of the bottom-towed gear specified area relevant to the site. The coordinates delineating the area's boundaries are provided in Table 8.

Schedule 9 - North West of Lundy Marine Conservation Zone

1. The bottom-towed gear specified area means the area enclosed by lines between the co-ordinates in Table 9.

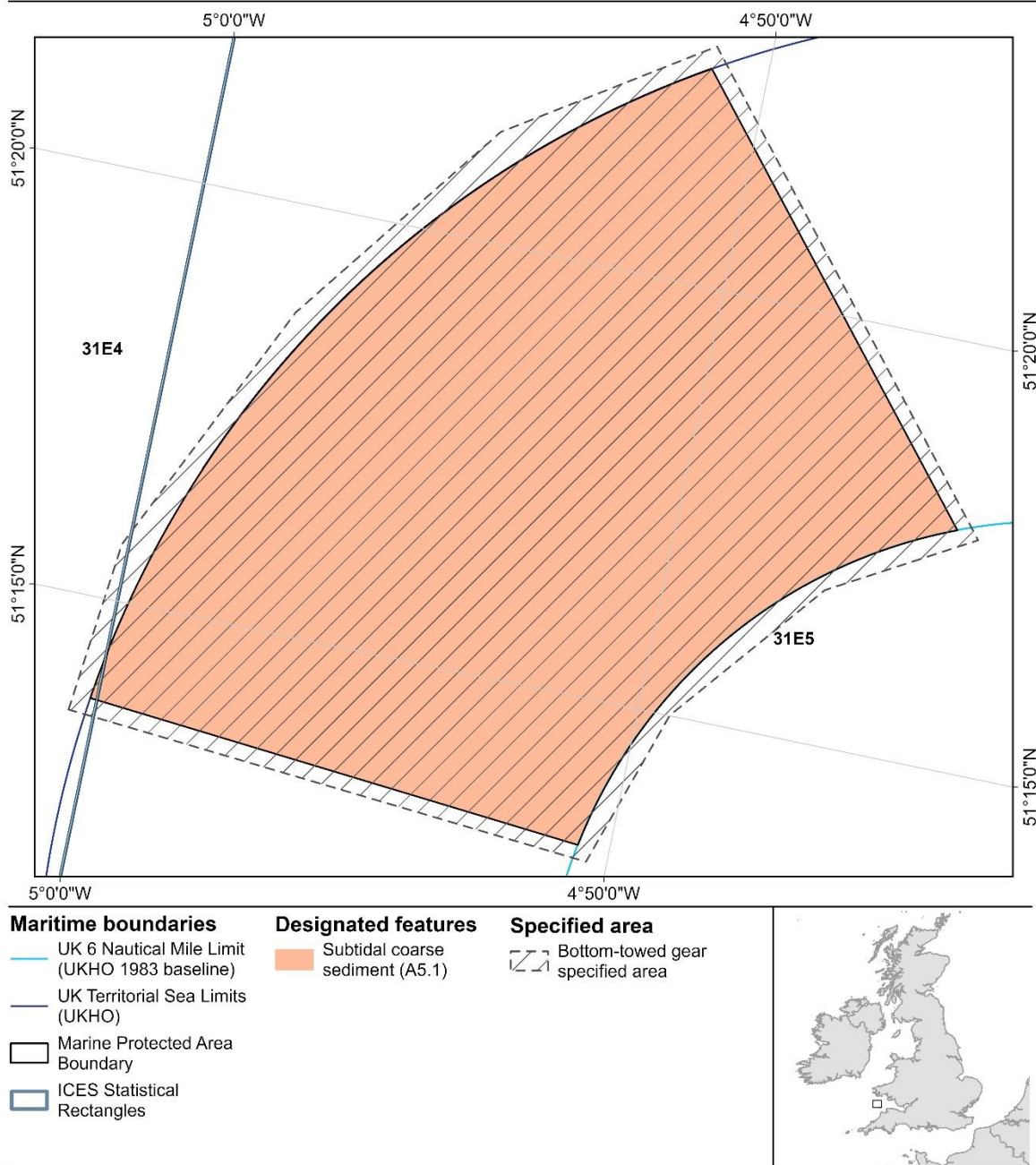
Table 8. Bottom-towed gear specified area relating to North West of Lundy Marine Conservation Zone.

| Point | Latitude (degrees and decimal minutes) | Longitude (degrees and decimal minutes) | Line to next point |
|-------|--|---|-------------------------------|
| 1 | 51° 13.6440' N | 05° 00.4781' W | Geodesic |
| 2 | 51° 15.6687' N | 05° 00.1266' W | Geodesic |
| 3 | 51° 18.7421' N | 04° 57.8108' W | Geodesic |
| 4 | 51° 21.3019' N | 04° 54.7182' W | Geodesic |
| 5 | 51° 22.7991' N | 04° 51.0513' W | Geodesic |
| 6 | 51° 17.7519' N | 04° 44.3750' W | Geodesic |
| 7 | 51° 16.8165' N | 04° 47.0116' W | Geodesic |
| 8 | 51° 15.0125' N | 04° 49.3955' W | Geodesic |
| 9 | 51° 13.1341' N | 04° 50.3863' W | Geodesic returning to Point 1 |

North West of Lundy

Marine Protected Area

Specified area for the prohibition of bottom-towed gear



Date of Publication: 17/07/2024
 Datum: ETRS 1989
 Projection: Lambert Azimuthal Equal Area
 MMO Reference: 10786

Not to be used for navigation. Contains Collins Bartholomew, DEFRA, MMO, Natural England, Ordnance Survey and UKHO data. © Collins Bartholomew, DEFRA, MMO, Natural England, Ordnance Survey and UKHO copyright and database right 2024. © ICES Statistical Rectangles dataset 2020. ICES, Copenhagen. Contains public sector information licensed under the Open Government Licence v3.0

Figure 9. Map of North West of Lundy Marine Conservation Zone showing the location of the bottom-towed gear specified area relevant to the site. The coordinates delineating the area's boundaries are provided in Table 9. The UK 6 Nautical Mile Limit (1983 baseline) referred to as 'the 1983 baselines' within this byelaw, defines the seaward limit of inshore fisheries and conservation districts.

Schedule 10 – Skerries Bank and Surrounds Marine Conservation Zone

1. The bottom-towed gear specified area means the area enclosed by lines between the co-ordinates in Table 10.
2. The spiny lobster specified area means the area enclosed by lines between the co-ordinates in Table 10.

Table 10. Bottom-towed gear specified area and spiny lobster specified area relating to Skerries Bank and Surrounds Marine Conservation Zone.

| Point | Latitude (degrees and decimal minutes) | Longitude (degrees and decimal minutes) | Line to next point |
|-------|--|---|--|
| 1 | 50° 05.0442' N | 03° 38.3251' W | Geodesic |
| 2 | 50° 06.0706' N | 03° 42.2488' W | Due north to a line drawn six nautical miles seaward of the 1983 baselines |
| 3 | 50° 06.1231' N | 03° 42.2488' W | Following a line drawn six nautical miles seaward of the 1983 baselines |
| 4 | 50° 07.4420' N | 03° 35.0511' W | Geodesic |
| 5 | 50° 07.3883' N | 03° 35.0511' W | Geodesic returning to Point 1 |



Marine
Management
Organisation

Skerries Bank and Surrounds

Marine Protected Area

Specified areas for the prohibition of bottom-towed gear
and removal of spiny lobster

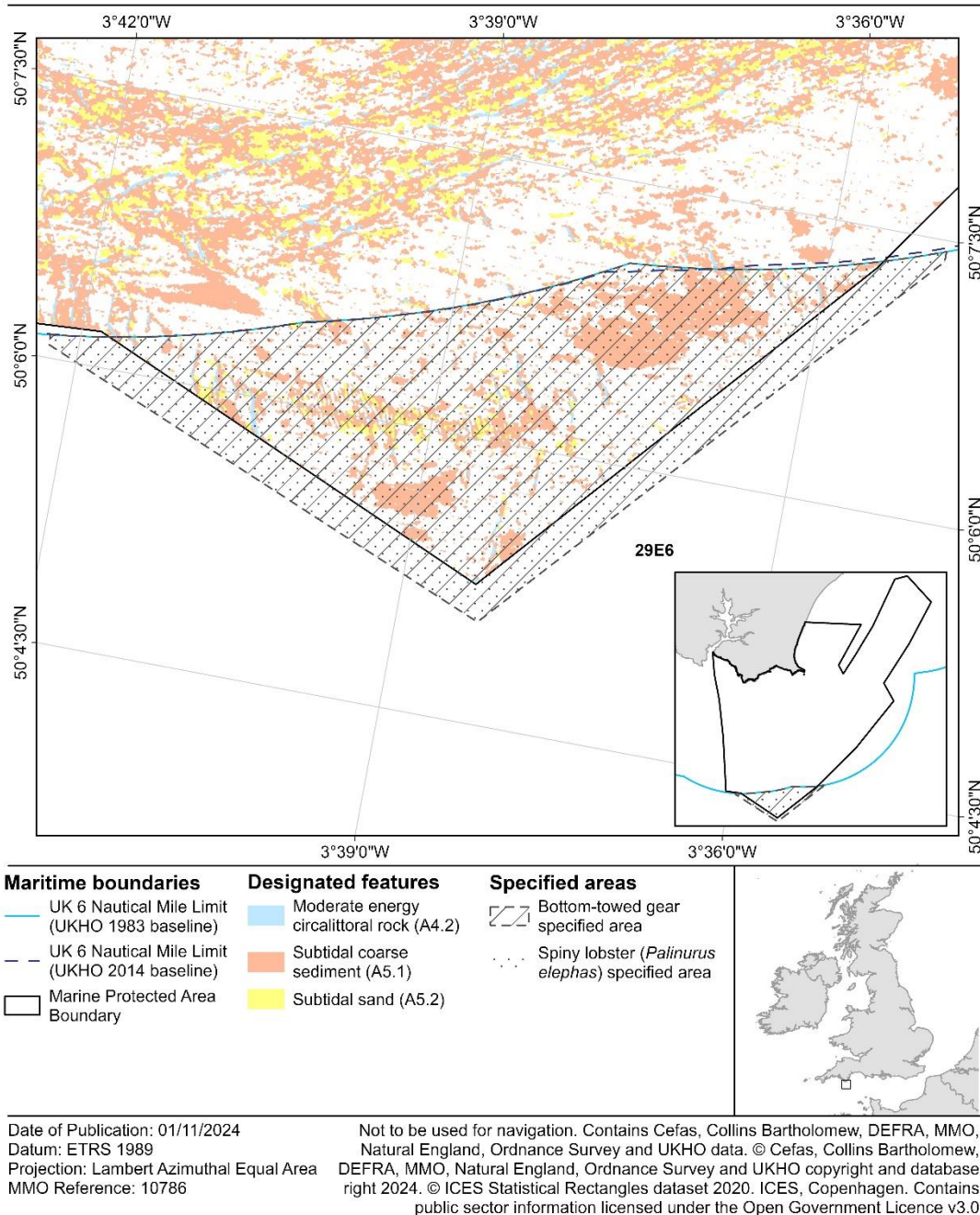


Figure 10. Map of Skerries Bank & Surrounds Marine Conservation Zone showing the locations of the bottom-towed gear specified area and the Spiny lobster specified area relevant to the site. The coordinates delineating the area's boundaries are provided in Table 10. The UK 6 Nautical Mile Limit (1983 baseline) referred to as 'the 1983 baselines' within this byelaw, defines the seaward limit of inshore fisheries and conservation districts. The UK 6 Nautical Mile Limit (2014 baseline) defines the inshore limit of EU vessel access for vessels with historic access rights (where a fishing vessel licence has been issued by the MMO).

Schedule 11 – South Dorset Marine Conservation Zone

1. The bottom-towed gear specified area means the area enclosed by lines between the co-ordinates in Table 11.

Table 11. Bottom-towed gear specified area relating to South Dorset Marine Conservation Zone.

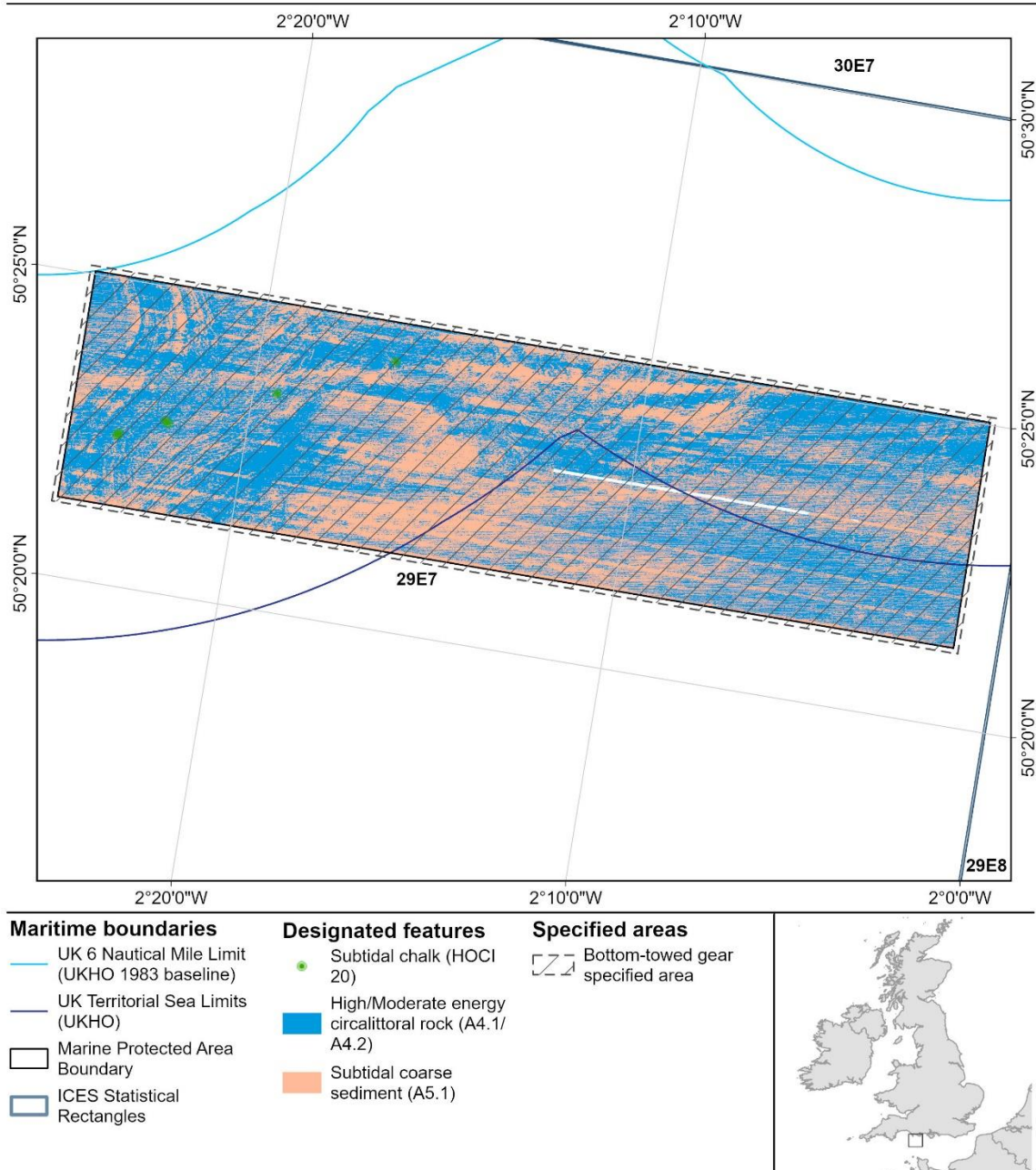
| Point | Latitude (degrees and decimal minutes) | Longitude (degrees and decimal minutes) | Line to next point |
|-------|--|---|----------------------|
| 1 | 50° 21.2214' N | 02° 24.6504' W | Geodesic |
| 2 | 50° 25.1394' N | 02° 24.6576' W | Geodesic |
| 3 | 50° 25.1322' N | 02° 00.9978' W | Geodesic |
| 4 | 50° 21.2154' N | 02° 00.9978' W | returning to Point 1 |



Marine
Management
Organisation

South Dorset Marine Protected Area

Specified area for the prohibition of bottom-towed gear



Date of Publication: 15/08/2024
Datum: ETRS 1989
Projection: Lambert Azimuthal Equal Area
MMO Reference: 10786

Not to be used for navigation. Contains Cefas, Collins Bartholomew, DEFRA, JNCC, MMO, Natural England, Ordnance Survey and UKHO data. © Cefas, Collins Bartholomew, DEFRA, JNCC, MMO, Natural England, Ordnance Survey and UKHO copyright and database right 2024. © ICES Statistical Rectangles dataset 2020. ICES, Copenhagen. Contains public sector information licensed under the Open Government Licence v3.0

Figure 11. Map of South Dorset Marine Conservation Zone showing the location of the bottom-towed gear specified area relevant to the site. The coordinates delineating the area's boundaries are provided in Table 11. The UK 6 Nautical Mile Limit (1983 baseline) referred to as 'the 1983 baselines' within this byelaw, defines the seaward limit of inshore fisheries and conservation districts.

Schedule 12 – South of Celtic Deep Marine Conservation Zone

1. The bottom-towed gear specified area means the area enclosed by lines between the co-ordinates in Table 12.

Table 12. Bottom-towed gear specified area relating to South of Celtic Deep Marine Conservation Zone.

| Point | Latitude (degrees and decimal minutes) | Longitude (degrees and decimal minutes) | Line to next point |
|-------|--|---|-------------------------------|
| 1 | 50° 56.6717' N | 06° 28.3332' W | Geodesic |
| 2 | 50° 56.6952' N | 06° 25.7251' W | Geodesic |
| 3 | 50° 49.7786' N | 06° 25.8108' W | Geodesic |
| 4 | 50° 49.7742' N | 06° 37.0116' W | Geodesic |
| 5 | 50° 59.0273' N | 06° 51.7001' W | Geodesic returning to Point 1 |

South of Celtic Deep Marine Protected Area

Specified area for the prohibition of bottom-towed gear

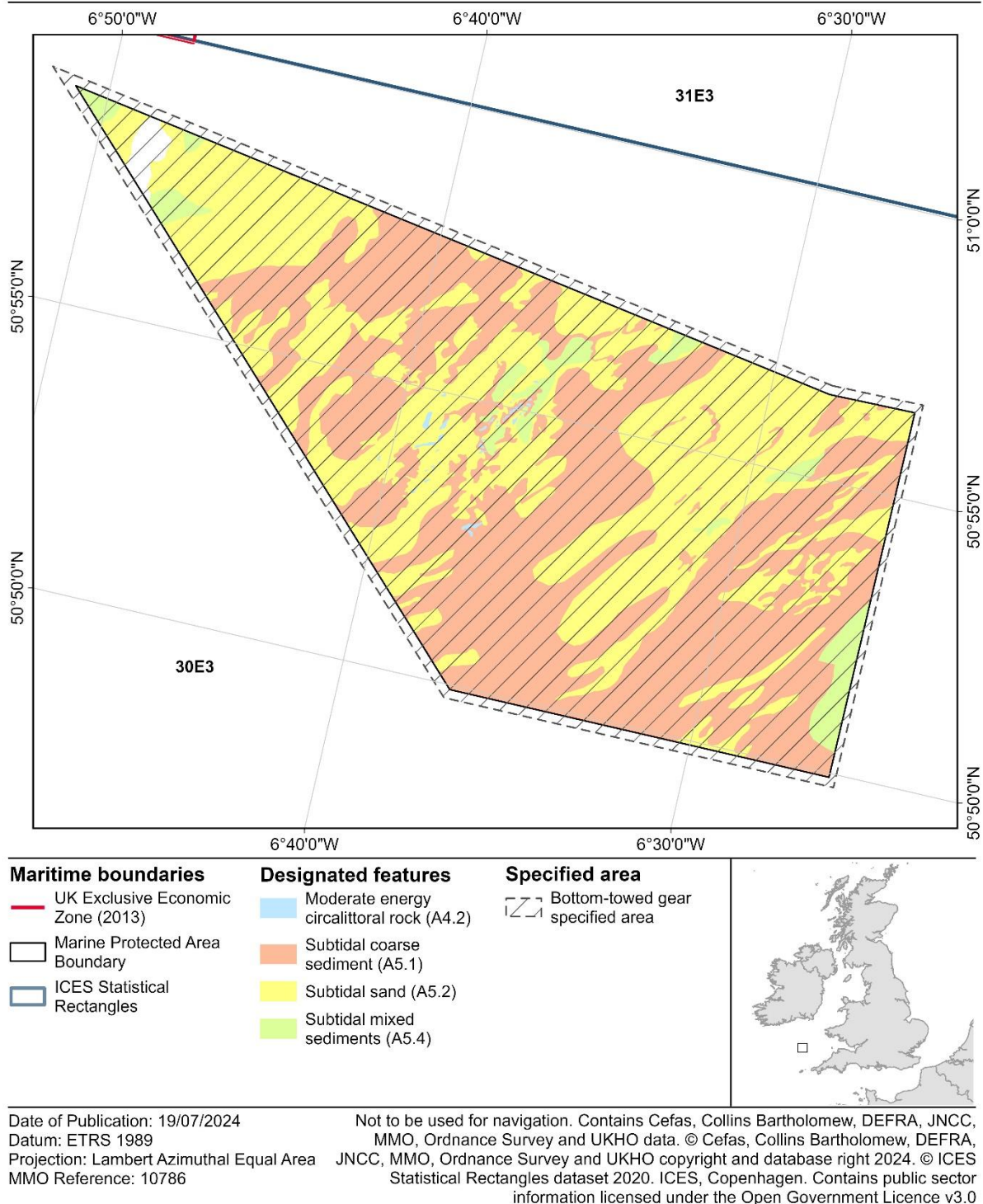


Figure 12. Map of South of Celtic Deep Marine Conservation Zone showing the location of the bottom-towed gear specified area relevant to the site. The coordinates delineating the area's boundaries are provided in Table 12.

Schedule 13 – South of the Isles of Scilly Marine Conservation Zone

1. The bottom-towed gear specified area means the area enclosed by lines between the co-ordinates in Table 13.

Table 13. Bottom-towed gear specified area relating to South of the Isles of Scilly Marine Conservation Zone

| Point | Latitude (degrees and decimal minutes) | Longitude (degrees and decimal minutes) | Line to next point |
|-------|--|---|-------------------------------|
| 1 | 49° 38.0695' N | 06° 17.9188' W | Geodesic |
| 2 | 49° 44.5925' N | 06° 17.9102' W | Geodesic |
| 3 | 49° 44.5594' N | 06° 07.5457' W | Geodesic |
| 4 | 49° 38.0938' N | 06° 07.5280' W | Geodesic returning to Point 1 |



Marine
Management
Organisation

South of the Isles of Scilly Marine Protected Area

Specified area for the prohibition of bottom-towed gear

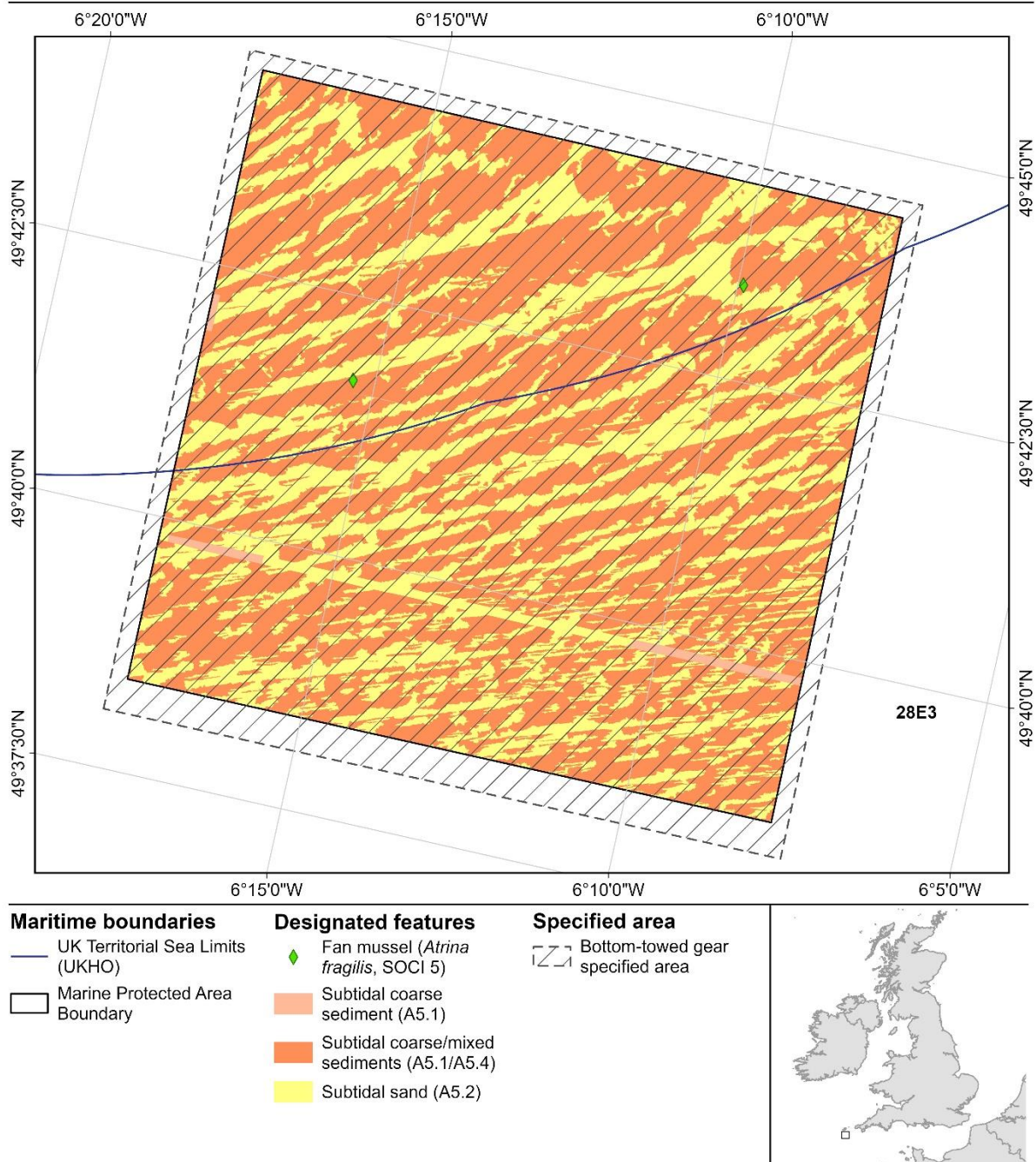


Figure 13. Map of South of the Isles of Scilly Marine Conservation Zone showing the location of the bottom-towed gear specified area relevant to the site. The coordinates delineating the area's boundaries are provided in Table 13.

Schedule 14 – South West Approaches to Bristol Channel Marine Conservation Zone

1. The bottom-towed gear specified area means the area enclosed by lines between the co-ordinates in Table 14.

Table 14. Bottom-towed gear specified area relating to South West Approaches to Bristol Channel Marine Conservation Zone

| Point | Latitude (degrees and decimal minutes) | Longitude (degrees and decimal minutes) | Line to next point |
|-------|--|---|-------------------------------|
| 1 | 50° 31.5413' N | 05° 22.2212' W | Geodesic |
| 2 | 50° 36.1387' N | 05° 38.7789' W | Geodesic |
| 3 | 51° 00.6590' N | 05° 10.3868' W | Geodesic |
| 4 | 50° 56.0187' N | 04° 53.6987' W | Geodesic returning to Point 1 |

South West Approaches to Bristol Channel Marine Protected Area

Specified area for the prohibition of bottom-towed gear

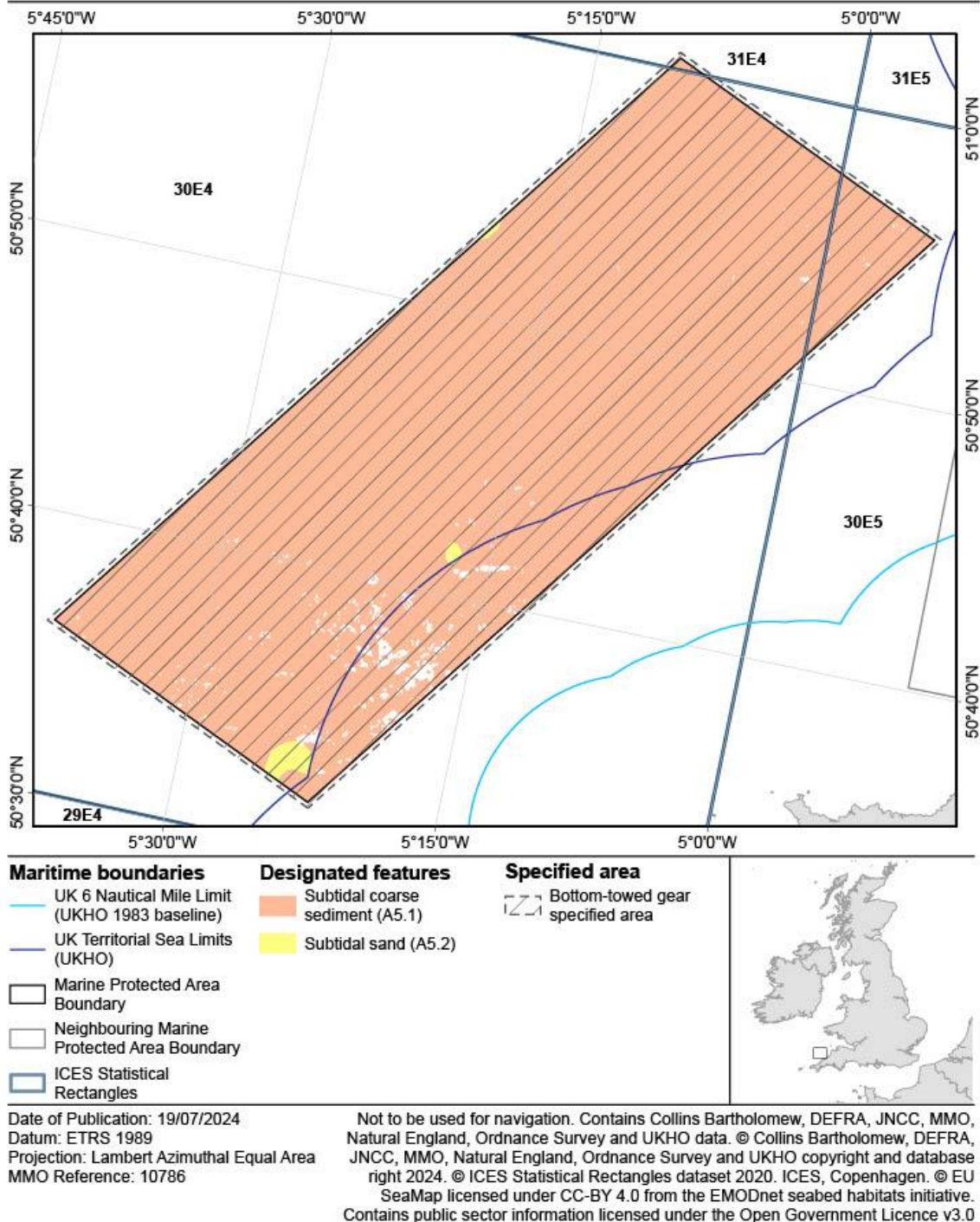


Figure 14. Map of South West Approaches to Bristol Channel Marine Conservation Zone showing the location of the bottom-towed gear specified area relevant to the site. The coordinates delineating the area's boundaries are provided in Table 14. The UK 6 Nautical Mile Limit (1983 baseline) referred to as 'the 1983 baselines' within this byelaw, defines the seaward limit of inshore fisheries and conservation districts.

Schedule 15 – South West Deep (East) Marine Conservation Zone and South-West Deep (West) Marine Conservation Zone

1. The bottom-set nets and lines specified area means the area enclosed by lines between the co-ordinates in Table 15a.

Table 15a. Bottom-set nets and lines specified area relating to South West Deep (East) Marine Conservation Zone and South West Deep (West) Marine Conservation Zone

| Point | Latitude (degrees and decimal minutes) | Longitude (degrees and decimal minutes) | Line to next point |
|-------|--|---|---|
| 1 | 48° 16.9932' N | 08° 57.4171' W | Due south to the UK exclusive economic zone boundary |
| 2 | - | 08° 57.4171' W | Following the UK exclusive economic zone boundary south west to specified longitude |
| 3 | - | 09° 16.6492' W | Geodesic |
| 4 | 48° 11.5897' N | 09° 16.6492' W | Geodesic |
| 5 | 48° 16.9087' N | 09° 16.4329' W | Geodesic |
| 6 | 48° 18.7003' N | 09° 15.2998' W | Geodesic |
| 7 | 48° 49.6630' N | 09° 15.3101' W | Geodesic |

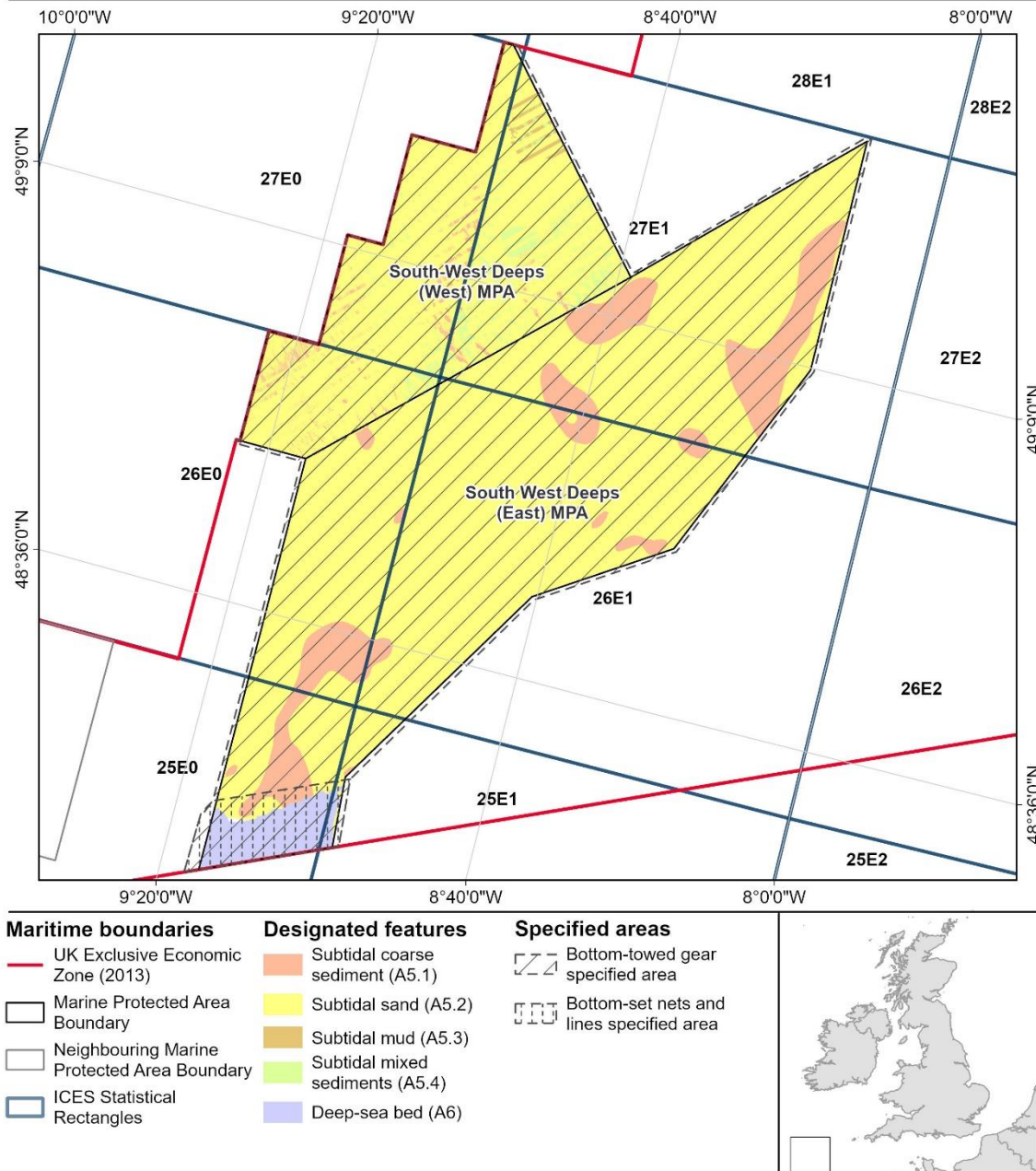
2. The bottom-towed gear specified area means the area enclosed by lines between the co-ordinates in Table 15b.

Table 15b. Bottom-towed gear specified area relating to South West Deep (East) Marine Conservation Zone and South West Deep (West) Marine Conservation Zone

| Point | Latitude (degrees and decimal minutes) | Longitude (degrees and decimal minutes) | Line to next point |
|-------|--|---|---|
| 8 | 49° 13.1970' N | 08° 38.1804' W | Geodesic |
| 9 | 49° 30.0142' N | 08° 11.6863' W | Geodesic |
| 10 | 49° 29.8754' N | 08° 11.0614' W | Geodesic |
| 11 | 49° 08.7616' N | 08° 11.0666' W | Geodesic |
| 12 | 48° 50.3637' N | 08° 23.2685' W | Geodesic |
| 13 | 48° 43.0995' N | 08° 40.2946' W | Geodesic |
| 14 | 48° 23.6764' N | 08° 58.2586' W | Geodesic |
| 15 | 48° 49.6760' N | 09° 24.4421' W | Due west to the UK exclusive economic zone boundary |
| 16 | 48° 49.6760' N | - | Following the UK exclusive economic zone boundary north east to specified longitude |
| 17 | - | 09° 00.9644' W | Geodesic |
| 18 | 49° 29.9474' N | 09° 00.9644' W | Geodesic returning to Point 1 |

South West Deep (East) and South-West Deep (West) Marine Protected Areas

Specified areas for the prohibition of bottom-towed gear and bottom-set nets and lines



Date of Publication: 27/08/2024
 Datum: ETRS 1989
 Projection: Lambert Azimuthal Equal Area
 MMO Reference: 10786

Not to be used for navigation. Contains BGS, Cefas, Collins Bartholomew, DEFRA, JNCC, MMO, Ordnance Survey and UKHO data. © BGS, Cefas, Collins Bartholomew, DEFRA, JNCC, MMO, Ordnance Survey and UKHO copyright and database right 2024. © ICES Statistical Rectangles dataset 2020. ICES, Copenhagen. © EU SeaMap licensed under CC-BY 4.0 from the EMODnet seabed habitats initiative. Contains public sector information licensed under the Open Government Licence v3.0

Figure 15. Map of South West Deep (East) Marine Conservation Zone and South-West Deep (West) Marine Conservation Zone showing the locations of the bottom-set nets and lines specified area and the bottom-towed gear specified area relevant to the site. The coordinates delineating the bottom-set nets and lines and traps specified area's boundaries are provided in Table 15a. The coordinates delineating the bottom-towed gear specified area's boundaries are provided in Table 15b.

Schedule 16 – Start Point to Plymouth Sound and Eddystone Special Area of Conservation

1. The bottom-towed gear specified areas mean the areas enclosed by lines between the co-ordinates in Table 16.
2. The traps specified areas mean the areas enclosed by lines between the coordinates in Table 16.

Table 16. Bottom-towed gear specified areas and traps specified areas relating to Start Point to Plymouth Sound and Eddystone Special Area of Conservation

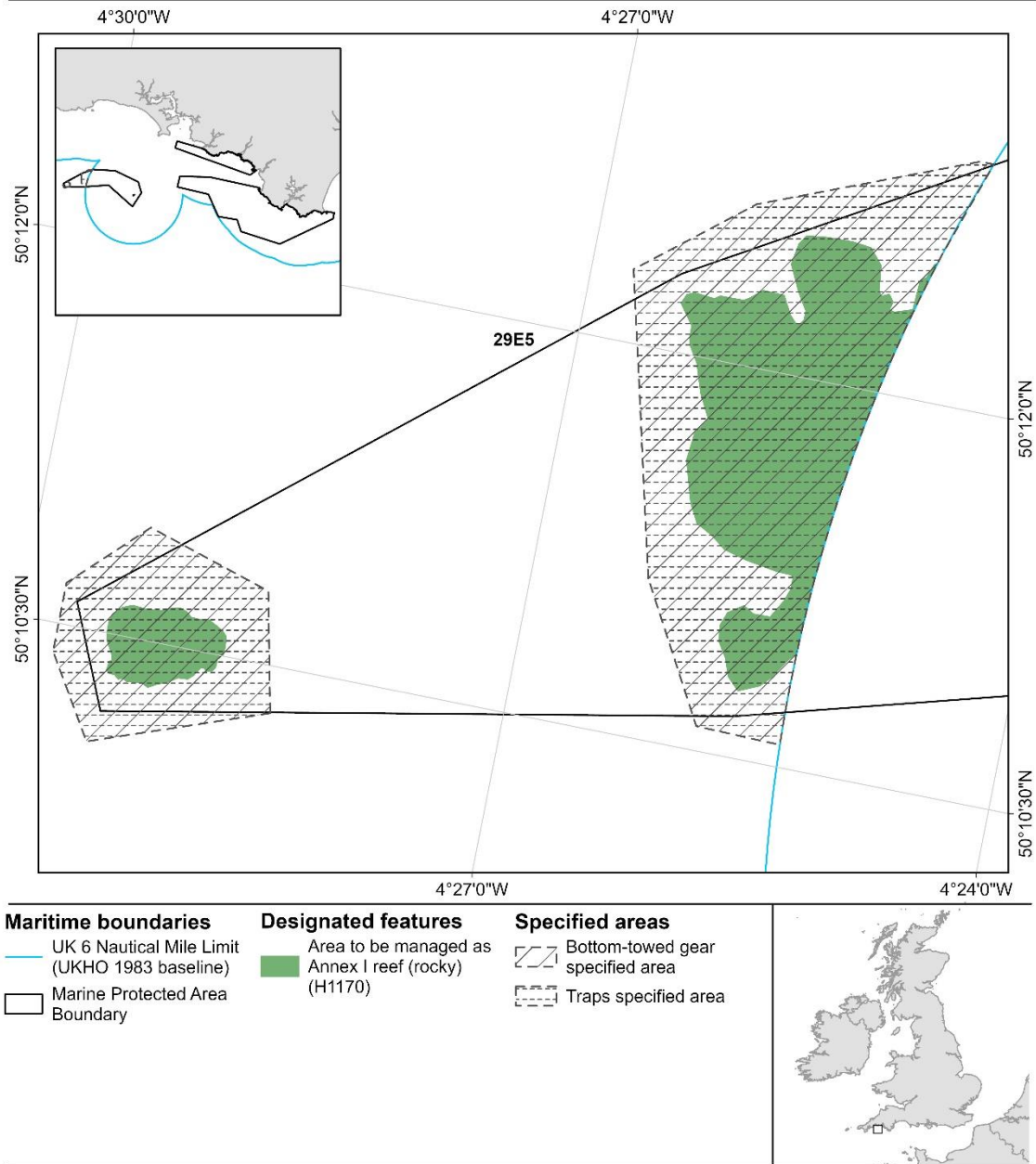
| Point | Latitude (degrees and decimal minutes) | Longitude (degrees and decimal minutes) | Line to next point |
|---------------|--|---|---|
| Area 1 | | | |
| 1 | 50° 10.3198' N | 04° 28.3887' W | Geodesic |
| 2 | 50° 10.0723' N | 04° 29.4487' W | Geodesic |
| 3 | 50° 10.3890' N | 04° 29.7533' W | Geodesic |
| 4 | 50° 10.6598' N | 04° 29.7541' W | Geodesic |
| 5 | 50° 10.9340' N | 04° 29.3162' W | Geodesic |
| 6 | 50° 10.7821' N | 04° 28.5432' W | Geodesic returning to Point 1 |
| Area 2 | | | |
| 7 | 50° 11.1201' N | 04° 26.2968' W | Geodesic |
| 8 | 50° 12.2835' N | 04° 26.7471' W | Geodesic |
| 9 | 50° 12.6241' N | 04° 26.0905' W | Geodesic |
| 10 | 50° 12.9562' N | 04° 24.8089' W | Due east to a line drawn six nautical miles seaward of the 1983 baselines |
| 11 | 50° 12.9562' N | 04° 24.7243' W | Following a line drawn six nautical miles seaward of the 1983 baselines |
| 12 | 50° 10.5886' N | 04° 25.3189' W | Geodesic |
| 13 | 50° 10.5886' N | 04° 25.4026' W | Geodesic |
| 14 | 50° 10.5953' N | 04° 25.8380' W | Geodesic returning to Point 7 |



Marine
Management
Organisation

Start Point to Plymouth Sound & Eddystone Marine Protected Area

Specified areas for the prohibition of bottom-towed gear
and traps



Date of Publication: 01/11/2024

Datum: ETRS 1989

Projection: Lambert Azimuthal Equal Area

MMO Reference: 10786

Not to be used for navigation. Contains Collins Bartholomew, DEFRA, MMO, Natural England, Ordnance Survey and UKHO data. © Collins Bartholomew, DEFRA, MMO, Natural England, Ordnance Survey and UKHO copyright and database right 2024. © ICES Statistical Rectangles dataset 2020. ICES, Copenhagen. Contains public sector information licensed under the Open Government Licence v3.0

Figure 16. Map of Start Point to Plymouth Sound and Eddystone Special Area of Conservation showing the locations of the bottom-towed gear specified areas and the traps specified areas relevant to the site. The coordinates delineating the bottom-towed gear specified areas' boundaries and the traps specified areas' boundaries are provided in Table 16. The UK 6 Nautical Mile Limit (1983 baseline) referred to as 'the 1983 baselines' within this byelaw, defines the seaward limit of inshore fisheries and conservation districts.

Schedule 17 – The Canyons Marine Conservation Zone

1. The bottom-set nets and lines specified area means the area enclosed by lines between the coordinates in Table 17.
2. The bottom-towed gear specified area means the area enclosed by lines between the coordinates in Table 17.

Table 17. Bottom-set nets and lines specified area and bottom-towed gear specified area relating to The Canyons Marine Conservation Zone

| Point | Latitude (degrees and decimal minutes) | Longitude (degrees and decimal minutes) | Line to next point |
|-------|--|---|-------------------------------|
| 1 | 48° 30.0000' N | 09° 33.1920' W | Geodesic |
| 2 | 48° 17.5266' N | 09° 33.1920' W | Geodesic |
| 3 | 48° 14.2068' N | 09° 42.5172' W | Geodesic |
| 4 | 48° 10.0002' N | 09° 38.9826' W | Geodesic |
| 5 | 48° 10.0002' N | 09° 48.4080' W | Geodesic |
| 6 | 48° 19.9992' N | 09° 48.4080' W | Geodesic |
| 7 | 48° 19.9992' N | 09° 48.0000' W | Geodesic |
| 8 | 48° 28.2630' N | 09° 48.0000' W | Geodesic |
| 9 | 48° 30.0000' N | 09° 45.4740' W | Geodesic returning to Point 1 |



Marine
Management
Organisation

The Canyons Marine Protected Area

Specified areas for the prohibition of bottom-towed gear
and bottom-set nets and lines

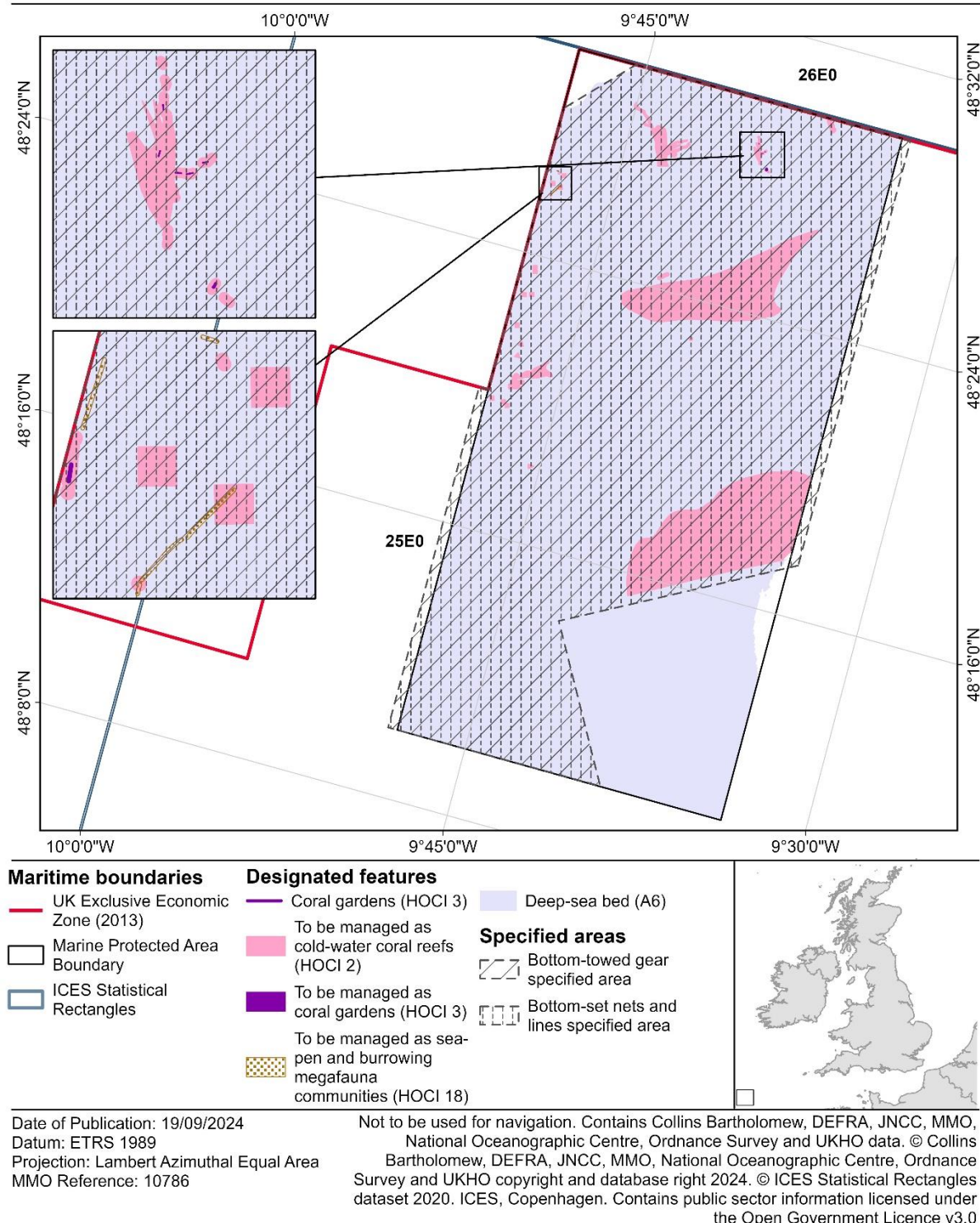


Figure 17. Map of The Canyons Marine Conservation Zone showing the locations of the bottom-towed gear specified area and the bottom-set nets and lines specified area relevant to the site. The coordinates delineating the areas' boundaries are provided in Table 17.

Schedule 18 – West of Wight-Barfleur Marine Conservation Zone

1. The bottom-towed gear specified area means the area enclosed by lines between the co-ordinates in Table 18.

Table 18. Bottom-towed gear specified area relating to West of Wight-Barfleur Marine Conservation Zone

| Point | Latitude (degrees and decimal minutes) | Longitude (degrees and decimal minutes) | Line to next point |
|-------|--|---|--|
| 1 | 50° 12.3624' N | 02° 15.3620' W | Geodesic |
| 2 | 50° 14.8651' N | 02° 03.8493' W | Geodesic |
| 3 | 50° 09.2314' N | 02° 03.2642' W | Due south to the UK exclusive economic zone boundary |
| 4 | - | 02° 03.2642' W | Following the UK exclusive economic zone boundary south west to specified latitude |
| 5 | 50° 06.4430' N | - | Geodesic |
| 6 | 50° 06.4430' N | 02° 14.3889' W | Geodesic returning to Point 1 |

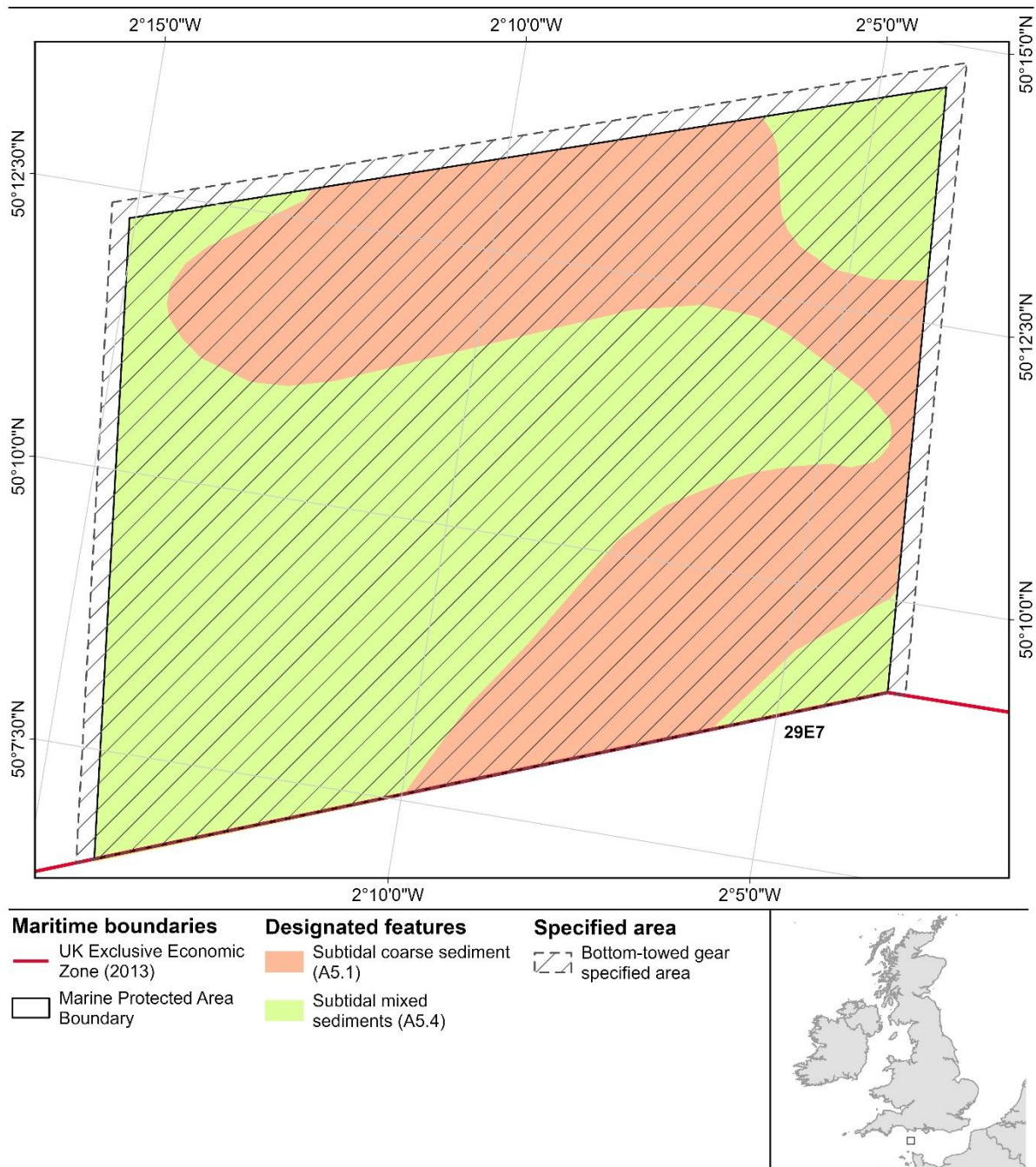


Marine
Management
Organisation

West of Wight-Barfleur

Marine Protected Area

Specified area for the prohibition of bottom-towed gear



Date of Publication: 23/07/2024
Datum: ETRS 1989
Projection: Lambert Azimuthal Equal Area
MMO Reference: 10786

Not to be used for navigation. Contains Collins Bartholomew, DEFRA, JNCC, MMO, Ordnance Survey and UKHO data. © Collins Bartholomew, DEFRA, JNCC, MMO, Ordnance Survey and UKHO copyright and database right 2024. © ICES Statistical Rectangles dataset 2020. ICES, Copenhagen. Contains public sector information licensed under the Open Government Licence v3.0

Figure 18. Map of West of Wight-Barfleur Marine Conservation Zone showing the location of the bottom-towed gear specified area relevant to the site. The coordinates delineating the area's boundaries are provided in Table 18.

Schedule 19 – Western Channel Marine Conservation Zone

1. The bottom-towed gear specified area means the area enclosed by lines between the co-ordinates in Table 19.

Table 19. Bottom-towed gear specified area relating to Western Channel Marine Conservation Zone

| Point | Latitude (degrees and decimal minutes) | Longitude (degrees and decimal minutes) | Line to next point |
|-------|--|---|---|
| 1 | 49° 17.3512' N | 05° 30.4954' W | Geodesic |
| 2 | 49° 25.0604' N | 05° 00.1487' W | Geodesic |
| 3 | 49° 37.8858' N | 04° 40.0675' W | Geodesic |
| 4 | 49° 31.9699' N | 04° 09.7514' W | Geodesic |
| 5 | 49° 29.3224' N | 04° 09.7506' W | Due south to the UK exclusive economic zone boundary |
| 6 | - | 04° 09.7506' W | Following the UK exclusive economic zone boundary south west to specified longitude |
| 7 | - | 05° 30.4930' W | Geodesic |
| 8 | 49° 12.5847' N | 05° 30.4930' W | Geodesic returning to Point 1 |

Western Channel Marine Protected Area

Specified area for the prohibition of bottom-towed gear

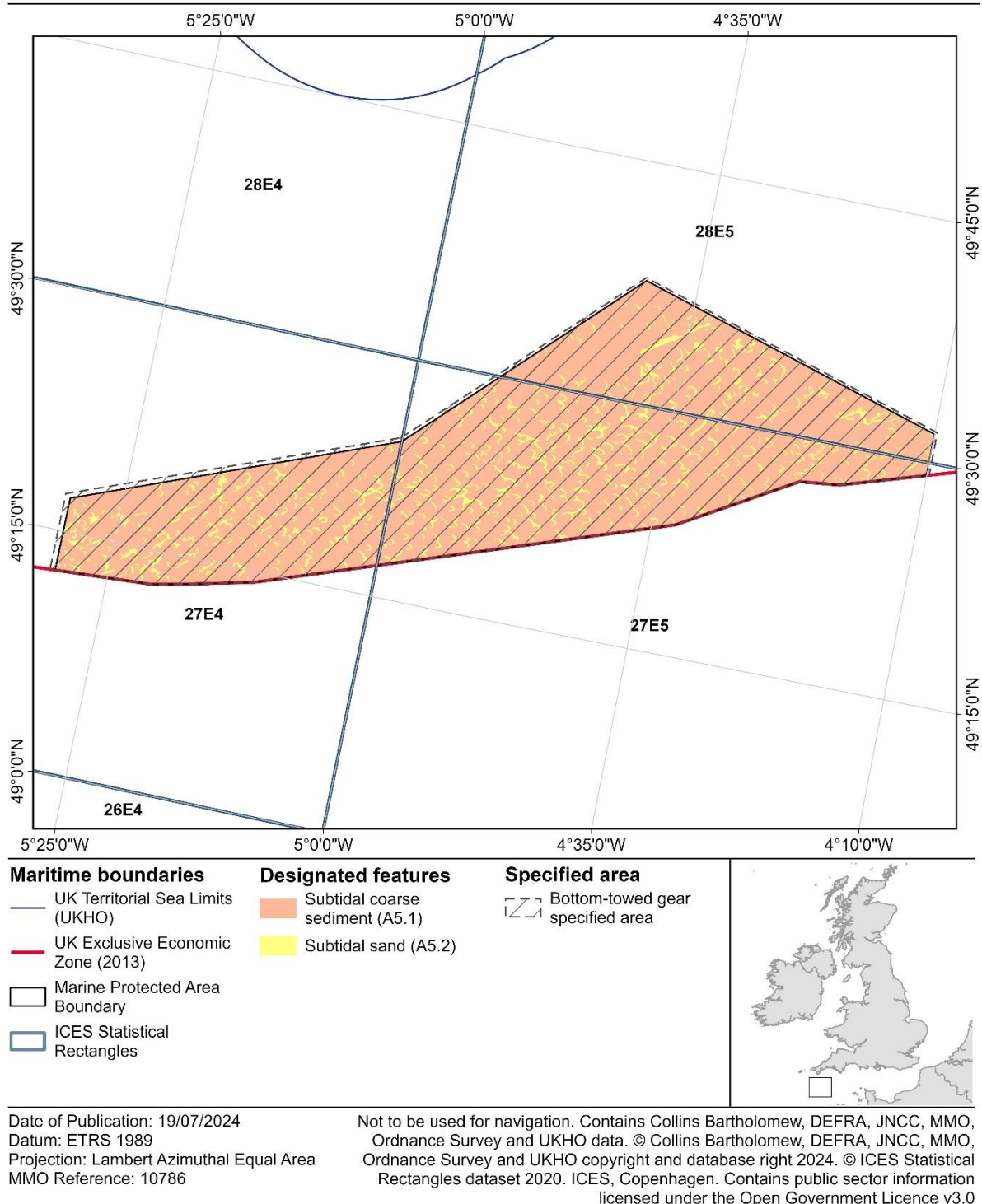


Figure 19. Map of Western Channel Marine Conservation Zone showing the location of the bottom-towed gear specified area relevant to the site. The coordinates delineating the area's boundaries are provided in Table 19.

Explanatory Note

(This note is not part of the Byelaw)

This Byelaw conserves the following marine fauna and habitats:

- i) Annex 1 reefs,
- ii) Celtic Sea relict sandbanks,
- iii) Cold water coral reefs,
- iv) Coral gardens,
- v) Deep-sea bed,
- vi) Fan mussel (*Atrina fragilis*),
- vii) Fragile sponge and anthozoan communities on subtidal rocky habitats,
- viii) High energy circalittoral rock,
- ix) Moderate energy circalittoral rock,
- x) Pink sea fan (*Eunicella verrucosa*),
- xi) Sea-pen and burrowing megafauna communities,
- xii) Spiny lobster (*Palinurus elephas*),
- xiii) Subtidal chalk,
- xiv) Subtidal coarse sediment,
- xv) Subtidal mixed sediments,
- xvi) Subtidal mixed sediments mosaic,
- xvii) Subtidal mud, and
- xviii) Subtidal sand.

The Byelaw prohibits the use of bottom-towed gear, bottom-set nets and lines, and traps, each of which is defined in the Byelaw, in the relevant specified areas as defined in the Schedules to this Byelaw. The specified areas relate to the marine protected areas as listed at paragraph 2. The Byelaw requires bottom-towed gear, bottom-set nets and lines and traps to be inboard, lashed and stowed when present within the relevant specified areas. The removal of spiny lobster (*Palinurus elephas*) is also prohibited from the spiny lobster specified area in one marine protected area, this being Skerries Bank and Surrounds Marine Conservation Zone. Failure to comply with the provisions of the Byelaw constitutes an offence contrary to section 139 of the Marine and Coastal Access Act 2009.

The following Byelaws are revoked by this Byelaw: -

The Canyons Marine Conservation Zone (Specified Area) Prohibited Fishing Gears Byelaw 2022

The South Dorset Marine Conservation Zone (Specified Area) Bottom Towed Fishing Gear Byelaw 2022

The Start Point to Plymouth Sound and Eddystone European Marine Site (Specified Areas) Bottom Towed Fishing Gear Byelaw