

Marine Management Organisation

Marine and Coastal Access Act 2009

The North Sea Marine Protected Areas Fishing Gear Byelaw 2024

The Marine Management Organisation¹, in exercise of the powers conferred by sections 129, 129A and 129B of the Marine and Coastal Access Act 2009², makes the following Byelaw to conserve the following marine fauna and habitats:

- i) Annex 1³ reefs,
- ii) High energy circalittoral rock,
- iii) Moderate energy circalittoral rock,
- iv) Ocean quahog (*Arctica islandica*),
- v) Sandbanks which are slightly covered by seawater all the time,
- vi) Sea-pen and burrowing megafauna communities,
- vii) Subtidal coarse sediment,
- viii) Subtidal mixed sediments,
- ix) Subtidal mud, and
- x) Subtidal sand.

Commencement

1. This Byelaw comes into force 50 days after the day on which it is confirmed by the Secretary of State.

Interpretation

2. In this Byelaw:

“the 1983 baselines” means the baselines for the measurement of the breadth of the territorial sea of the United Kingdom as they existed on 25 January 1983 in accordance with the Territorial Waters Order in Council 1964⁴;

“the Act” means the Marine and Coastal Access Act 2009;

¹ The Marine Management Organisation was established by the Marine and Coastal Access Act 2009, section 1.

² 2009 c. 23.

³ Annex I (Natural Habitat Types of Community Interest whose Conservation Requires the Designation of Special Areas of Conservation) of Council Directive 92/43/EEC of 21 May 1992 on the conservation of natural habitats and of wild fauna and flora.

⁴ 1965 III p.6452A; amended by the Territorial Waters (Amendment) Order in Council 1979 III p.2866, the Territorial Sea (Amendment) Order 1996 (S.I. 1996/1628), the Territorial Sea (Amendment) Order 1998 (S.I. 1998/2564), and revoked by the Territorial Sea (Baselines) Order 2014 (S.I. 2014/1353).

“bottom-set nets and lines” means any nets, including but not limited to gillnets, entangling nets and trammel nets, or hooks and lines where, during use, any part of the gear, including weights or anchors is in contact with the seafloor or may come into contact with the seafloor, but does not include fishing with a rod and line;

“bottom-set nets and lines and traps specified area” means the areas more particularly described in Schedules 5 and 8, which relate to the following areas:

- i) Schedule 5 – Goodwin Sands Marine Conservation Zone, and
- ii) Schedule 8 – Inner Dowsing Special Area of Conservation;

“bottom-towed fishing gear” means any trawls, seines, dredges, or similar gear, including trawls towed on or very close to the seabed, which are actively moved in the water by one or more vessels or by any other mechanised system and in which any part of the gear is designed or rigged to operate on, and be in contact with, the seabed in order to take any sea fisheries resources;

“bottom-towed gear specified area” means the areas more particularly described in Schedules 1 to 14, which relate to the following areas:

- i) Schedule 1 – Dogger Bank Special Area of Conservation;
- ii) Schedule 2 – Farnes East Marine Conservation Zone;
- iii) Schedule 3 – Foreland Marine Conservation Zone;
- iv) Schedule 4 – Fulmar Marine Conservation Zone;
- v) Schedule 5 – Goodwin Sands Marine Conservation Zone;
- vi) Schedule 6 – Haisborough, Hammond and Winterton Special Area of Conservation;
- vii) Schedule 7 – Holderness Offshore Marine Conservation Zone;
- viii) Schedule 8 – Inner Dowsing, Race Bank and North Ridge Special Area of Conservation;
- ix) Schedule 9 – Kentish Knock East Marine Conservation Zone;
- x) Schedule 10 – Margate and Long Sands Special Area of Conservation;
- xi) Schedule 11 – Markham’s Triangle Marine Conservation Zone;
- xii) Schedule 12 – North Norfolk Sandbanks and Saturn Reef Special Area of Conservation;
- xiii) Schedule 13 – Orford Inshore Marine Conservation Zone; and
- xiv) Schedule 14 – Swallow Sand Marine Conservation Zone;

“ETRS 1989” means the European Terrestrial Reference System 1989;

“inboard, lashed and stowed” means fishing gear that is stored on a vessel in such a way that it cannot readily be used for fishing or any other purpose;

“traps” means any traps, pots, creels or similar gear designed, adapted or intended for deployment on the seafloor to capture and take any sea fisheries resources;

“traps specified area” means the areas more particularly described in Schedules 6, and 12, which relate to the following areas:

- i) Schedule 6 – Haisborough, Hammond and Winterton Special Area of Conservation; and
- ii) Schedule 12 – North Norfolk Sandbanks and Saturn Reef Special Area of Conservation.

3. Co-ordinates used in this Byelaw are measured from ETRS 1989 datum.

Prohibition

- 4. A person must not use bottom-towed fishing gear in a bottom-towed gear specified area.
- 5. A vessel carrying bottom-towed fishing gear within a bottom-towed gear specified area must have all bottom-towed fishing gear inboard, lashed and stowed.
- 6. A person must not use bottom-set nets and lines or traps in a bottom-set nets and lines and traps specified area.
- 7. A vessel carrying bottom-set nets and lines or traps in a bottom-set nets and lines and traps specified area must have all bottom-set nets and lines and traps inboard, lashed and stowed.
- 8. A person must not use traps within a traps specified area.
- 9. A vessel carrying traps within a traps specified area must have all traps inboard, lashed and stowed.
- 10. Failure to comply with paragraphs 4, 5, 6, 7, 8 and 9 constitutes an offence contrary to section 139 of the Act.

Exemption

- 11. Paragraphs 4, 5, 6, 7, 8 and 9 do not apply to a person performing an act which would otherwise constitute an offence against this Byelaw, as set out in paragraph 10, if:
 - a. the act was carried out in accordance with written permission issued by the Marine Management Organisation permitting that act for scientific, stocking or breeding purposes; or
 - b. the act was carried out in accordance with:
 - i. a licence or authorisation issued under the Petroleum Act 1998⁵ or Part 1 of the Energy Act 2008⁶; or

⁵ 1998 c. 17.

⁶ 2008 c. 32.

- ii. a consent issued pursuant to such a licence or authorisation; or
- iii. a marine licence issued by the Secretary of State under Part 4 of the Act.

Revocation

12. "The Dogger Bank Special Area of Conservation (Specified Area) Bottom Towed Fishing Gear Byelaw 2022" made by the Marine Management Organisation on 8 April 2022 is revoked.

13. "The Inner Dowsing, Race Bank and North Ridge Special Area of Conservation (Specified Areas) Prohibited Fishing Gears Byelaw 2022" made by the Marine Management Organisation on 8 April 2022 is revoked.

14. "The Margate and Long Sands European Marine Site (Specified Areas) Bottom Towed Fishing Gear Byelaw 2017" made by the Marine Management Organisation on 2 August 2017 is revoked.

15. "The Marine Protected Areas Bottom Towed Fishing Gear Byelaw 2023" made by the Marine Management Organisation on 16 October 2023 is revoked.

Citation

16. This Byelaw may be cited as the North Sea Marine Protected Areas Fishing Gear Byelaw 2024.

Made under the Common Seal of the Marine Management Organisation on:

The Common Seal of the Marine Management Organisation was affixed to this Byelaw in the presence of:

Peter Clark
Director of Operations
Marine Management Organisation

The Secretary of State for Environment, Food and Rural Affairs in exercise of the power conferred by section 130(8) of the Marine and Coastal Access Act 2009 confirms this Byelaw.

A Senior Civil Servant for, and on behalf of, the Secretary of State for Environment, Food and Rural Affairs.

Date:

Schedule 1 – Dogger Bank Special Area of Conservation

1. The bottom-towed gear specified area means the area enclosed by lines between the co-ordinates in Table 1.

Table 1. Bottom-towed gear specified area relating to Dogger Bank Special Area of Conservation

Point	Latitude (degrees and decimal minutes)	Longitude (degrees and decimal minutes)	Line to next point
1	55° 11.7013' N	01° 36.7388' E	Geodesic
2	55° 29.9112' N	02° 54.2228' E	Geodesic
3	55° 29.0225' N	03° 15.0202' E	due east to the UK exclusive economic zone boundary; then following this boundary south; to latitude 54° 22.5797' N; then due West to
4	54° 22.5797' N	02° 45.7588' E	Geodesic
5	54° 18.2478' N	02° 43.2465' E	Geodesic
6	54° 16.0012' N	02° 31.9277' E	Geodesic
7	54° 14.3408' N	02° 22.6527' E	Geodesic
8	54° 17.6363' N	02° 00.0962' E	Geodesic
9	54° 29.4375' N	01° 16.6388' E	Geodesic
10	54° 49.1315' N	01° 08.1282' E	Geodesic
11	55° 03.5550' N	01° 19.6207' E	Geodesic returning to Point 1.



Marine
Management
Organisation

Dogger Bank Marine Protected Area

Specified area for the prohibition of bottom-towed gear

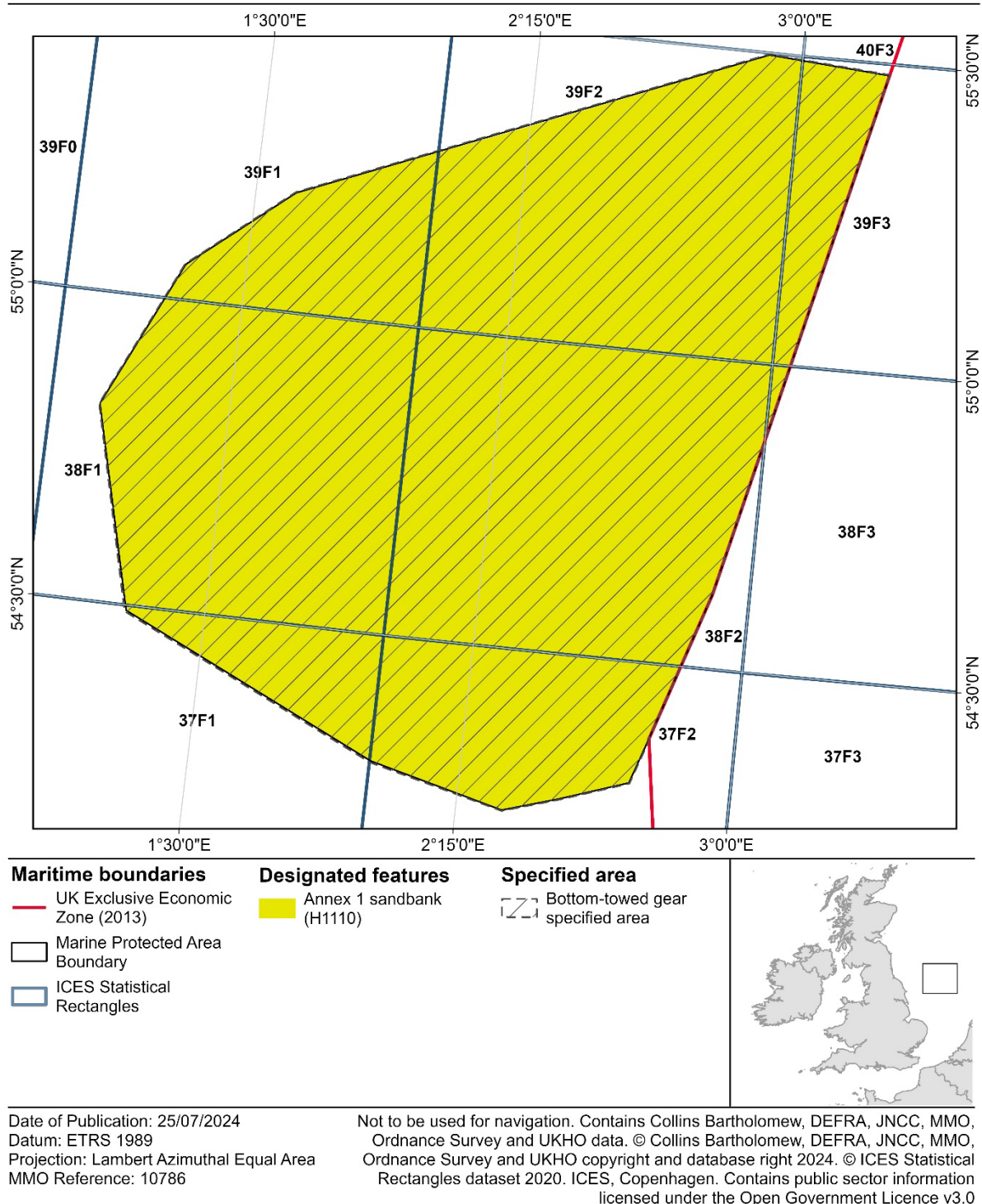


Figure 1. Map of Dogger Bank Special Area of Conservation showing the location of the bottom-towed gear specified area relevant to the site. The coordinates delineating the area's boundaries are provided in Table 1.

Schedule 2 – Farnes East Marine Conservation Zone

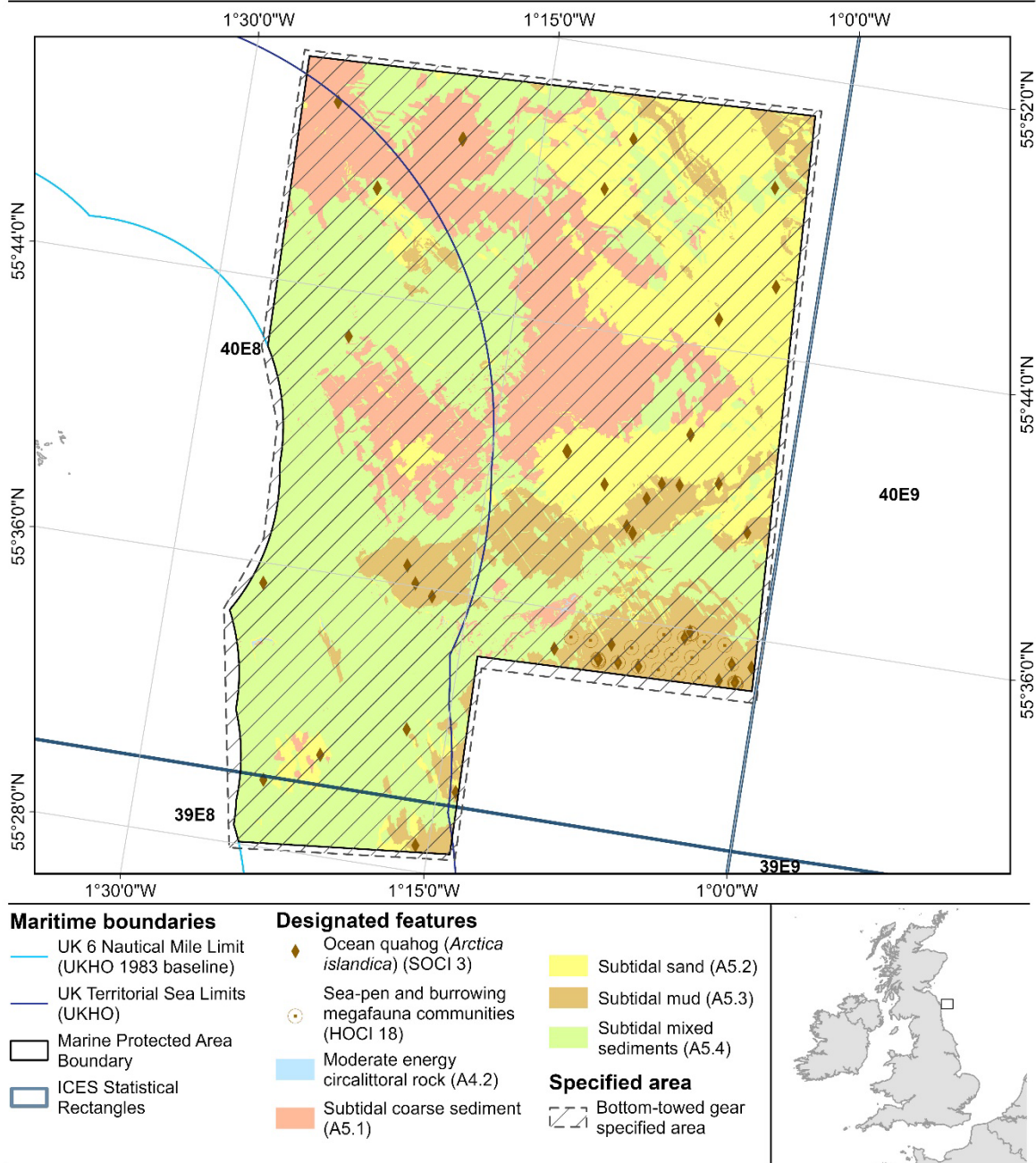
1. The bottom-towed gear specified area means the area enclosed by lines between the co-ordinates in Table 2.

Table 2: Bottom-towed gear specified area relating to Farnes East Marine Conservation Zone

Point	Latitude (degrees and decimal minutes)	Longitude (degrees and decimal minutes)	Line to next point
1	55° 34.5749' N	01° 27.0367' W	Geodesic
2	55° 36.7257' N	01° 25.6339' W	Geodesic
3	55° 39.9778' N	01° 25.8871' W	Geodesic
4	55° 42.0794' N	01° 27.2964' W	Geodesic
5	55° 50.5880' N	01° 27.5953' W	Geodesic
6	55° 51.1575' N	01° 01.2977' W	Geodesic
7	55° 34.2566' N	00° 59.8763' W	Geodesic
8	55° 34.0427' N	01° 13.7842' W	Geodesic
9	55° 28.5418' N	01° 13.5736' W	Geodesic
10	55° 27.8931' N	01° 24.8363' W	Geodesic returning to Point 1

Farnes East Marine Protected Area

Specified area for the prohibition of bottom-towed gear



Date of Publication: 11/07/2024
 Datum: ETRS 1989
 Projection: Lambert Azimuthal Equal Area
 MMO Reference: 10786

Not to be used for navigation. Contains Cefas, Collins Bartholomew, DEFRA, JNCC, MMO, Natural England, Ordnance Survey and UKHO data. © Cefas, Collins Bartholomew, DEFRA, JNCC, MMO, Natural England, Ordnance Survey and UKHO copyright and database right 2024. © ICES Statistical Rectangles dataset 2020. ICES, Copenhagen. Contains public sector information licensed under the Open Government Licence v3.0

Figure 2. Map of Farnes East Marine Conservation Zone showing the location of the bottom-towed gear specified area relevant to the site. The coordinates delineating the area's boundaries are provided in Table 2. The UK 6 Nautical Mile Limit (1983 baseline) referred to as 'the 1983 baselines' within this byelaw, defines the seaward limit of inshore fisheries and conservation districts.

Schedule 3 – Foreland Marine Conservation Zone

1. The bottom-towed gear specified area means the area enclosed by lines between the co-ordinates in Table 3.

Table 3. Bottom-towed gear specified area relating to Foreland Marine Conservation Zone

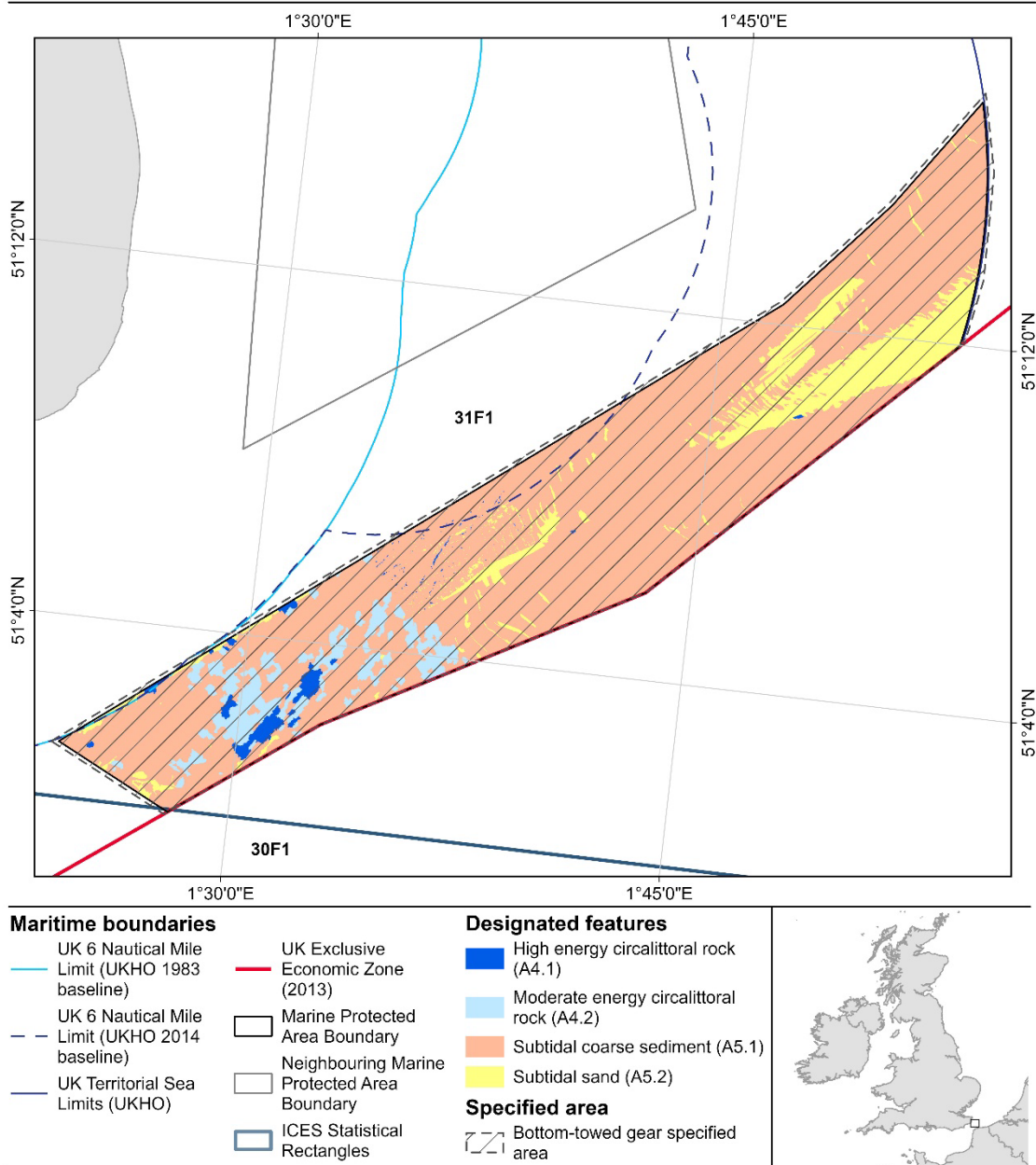
Point	Latitude (degrees and decimal minutes)	Longitude (degrees and decimal minutes)	Line to next point
1	51° 01.2375' N	01° 23.6722' E	Geodesic
2	51° 12.5225' N	01° 46.9728' E	Geodesic
3	51° 14.9107' N	01° 50.3168' E	Geodesic
4	51° 17.5002' N	01° 53.2045' E	Geodesic
5	51° 15.8104' N	01° 53.7932' E	Geodesic
6	51° 13.4668' N	01° 53.8430' E	Geodesic
7	51° 12.1263' N	01° 53.4310' E	Due south to the UK exclusive economic zone boundary
8	-	01° 53.4310' E	Following the UK exclusive economic zone boundary south west to specified latitude
9	50° 59.9510' N	-	Geodesic
10	50° 59.9510' N	01° 27.7291' E	Geodesic returning to Point 1



Marine
Management
Organisation

Foreland Marine Protected Area

Specified area for the prohibition of bottom-towed gear



Date of Publication: 16/07/2024

Datum: ETRS 1989

Projection: Lambert Azimuthal Equal Area

MMO Reference: 10786

Not to be used for navigation. Contains Collins Bartholomew, DEFRA, MMO, Natural England, Ordnance Survey and UKHO data. © Collins Bartholomew, DEFRA, MMO, Natural England, Ordnance Survey and UKHO copyright and database right 2024. © ICES Statistical Rectangles dataset 2020. ICES, Copenhagen. Contains public sector information licensed under the Open Government Licence v3.0

Figure 3. Map of Foreland Marine Conservation Zone showing the location of the bottom-towed gear specified area relevant to the site. The coordinates delineating the area's boundaries are provided in Table 3. The UK 6 Nautical Mile Limit (1983 baseline) referred to as 'the 1983 baselines' within this byelaw, defines the seaward limit of inshore fisheries and conservation districts. The UK 6 Nautical Mile Limit (2014 baseline) defines the inshore limit of EU vessel access for vessels with historic access rights (where a fishing vessel licence has been issued by the MMO).

Schedule 4 – Fulmar Marine Conservation Zone

1. The bottom-towed gear specified area means the area enclosed by lines between the co-ordinates in Table 4.

Table 4. Bottom-towed gear specified area relating to Fulmar Marine Conservation Zone

Point	Latitude (degrees and decimal minutes)	Longitude (degrees and decimal minutes)	Line to next point
1	56° 36.6358' N	01° 49.9874' E	Geodesic
2	56° 36.5408' N	02° 31.1725' E	Geodesic
3	56° 05.6205' N	02° 31.7607' E	Geodesic
4	56° 05.2275' N	01° 49.5787' E	Geodesic returning to Point 1



Marine
Management
Organisation

Fulmar Marine Protected Area

Specified area for the prohibition of bottom-towed gear

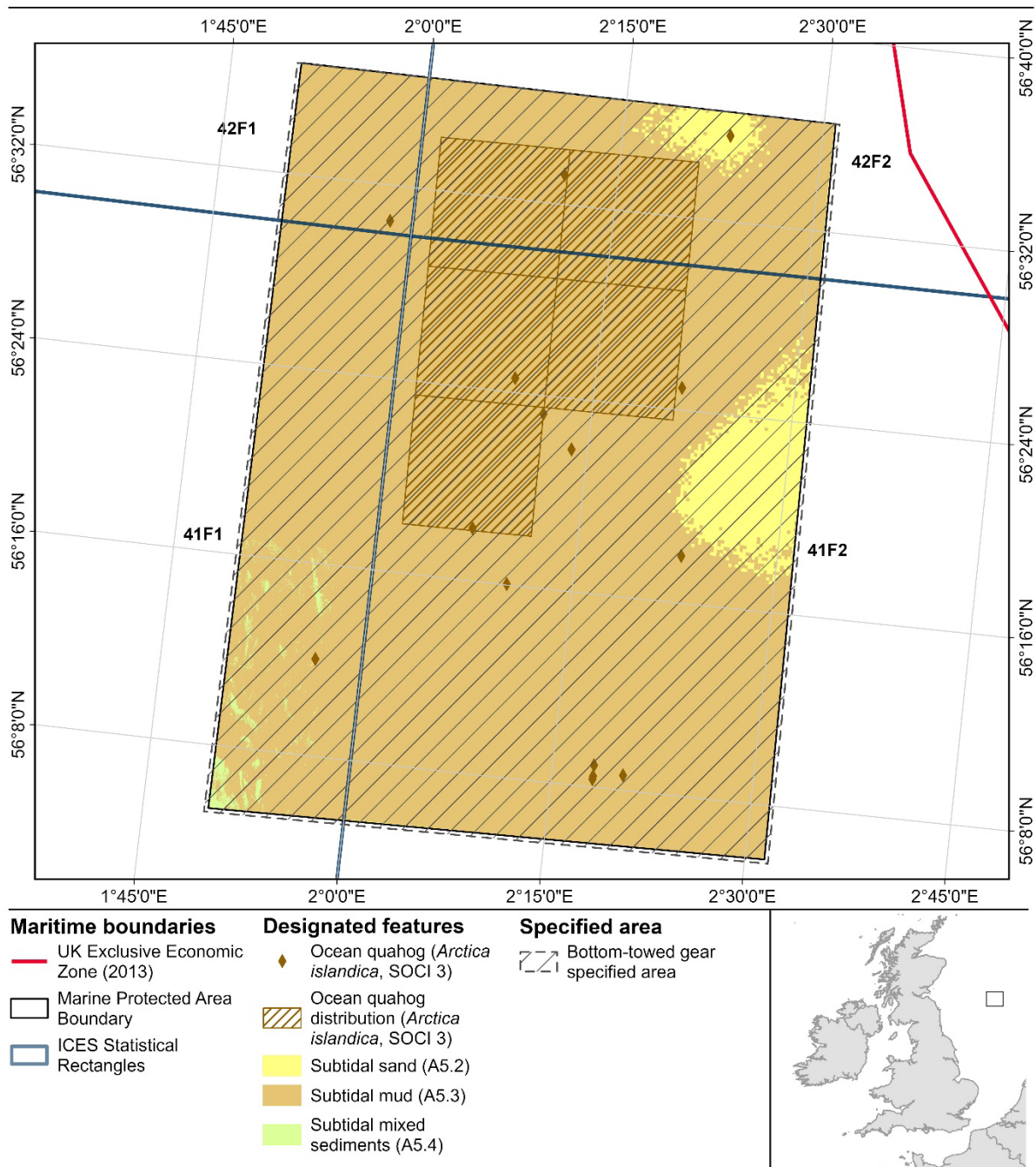


Figure 4. Map of Fulmar Marine Conservation Zone showing the location of the bottom-towed gear specified area relevant to the site. The coordinates delineating the area's boundaries are provided in Table 4.

Schedule 5 – Goodwin Sands Marine Conservation Zone

1. The bottom-set nets and lines and traps specified areas mean the areas enclosed by lines between the co-ordinates in Table 5a.

Table 5a. Bottom-set nets and lines and traps specified areas relating to Goodwin Sands Marine Conservation Zone

Point	Latitude (degrees and decimal minutes)	Longitude (degrees and decimal minutes)	Line to next point
Area 1			
1	51° 10.2101' N	01° 34.5243' E	Geodesic
2	51° 10.0428' N	01° 34.1390' E	Due west to a line drawn six nautical miles seaward of the 1983 baselines
3	51° 10.0428' N	01° 34.0135' E	Following a line drawn six nautical miles seaward of the 1983 baselines
4	51° 12.1896' N	01° 33.9061' E	Geodesic
5	51° 12.2134' N	01° 34.2714' E	Geodesic returning to Point 1
Area 2			
6	51° 18.7374' N	01° 37.9562' E	Geodesic
7	51° 18.5800' N	01° 37.4991' E	Geodesic
8	51° 18.7324' N	01° 37.0677' E	Geodesic
9	51° 18.9501' N	01° 36.9282' E	Geodesic
10	51° 19.2004' N	01° 37.0984' E	Geodesic
11	51° 19.2924' N	01° 37.5169' E	Geodesic
12	51° 19.1915' N	01° 37.9216' E	Geodesic
13	51° 18.9649' N	01° 38.0680' E	Geodesic returning to Point 1
Area 3			
14	51° 14.9400' N	01° 39.1425' E	Geodesic
15	51° 14.6575' N	01° 38.5443' E	Geodesic
16	51° 14.7199' N	01° 38.1881' E	Geodesic
17	51° 14.7930' N	01° 38.0096' E	Geodesic
18	51° 17.0442' N	01° 38.0014' E	Geodesic
19	51° 19.1309' N	01° 40.3421' E	Geodesic
20	51° 19.6046' N	01° 39.0556' E	Geodesic
21	51° 21.1151' N	01° 39.3726' E	Geodesic
22	51° 21.1322' N	01° 39.5626' E	Geodesic
23	51° 20.3792' N	01° 41.1000' E	Geodesic
24	51° 19.0145' N	01° 41.7056' E	Geodesic
25	51° 16.9716' N	01° 39.6694' E	Geodesic

26	51° 15.1100' N	01° 39.3030' E	Geodesic returning to Point 1
Area 4			
27	51° 15.7084' N	01° 42.9506' E	Geodesic
28	51° 15.1055' N	01° 42.3453' E	Geodesic
29	51° 15.3169' N	01° 41.9324' E	Geodesic
30	51° 16.1052' N	01° 42.3255' E	Geodesic
31	51° 16.0390' N	01° 42.5738' E	Geodesic returning to Point 1

2. The bottom-towed gear specified area means the area enclosed by lines between the coordinates in Table 5b.

Table 5b. Bottom-towed gear specified area relating to Goodwin Sands Marine Conservation Zone

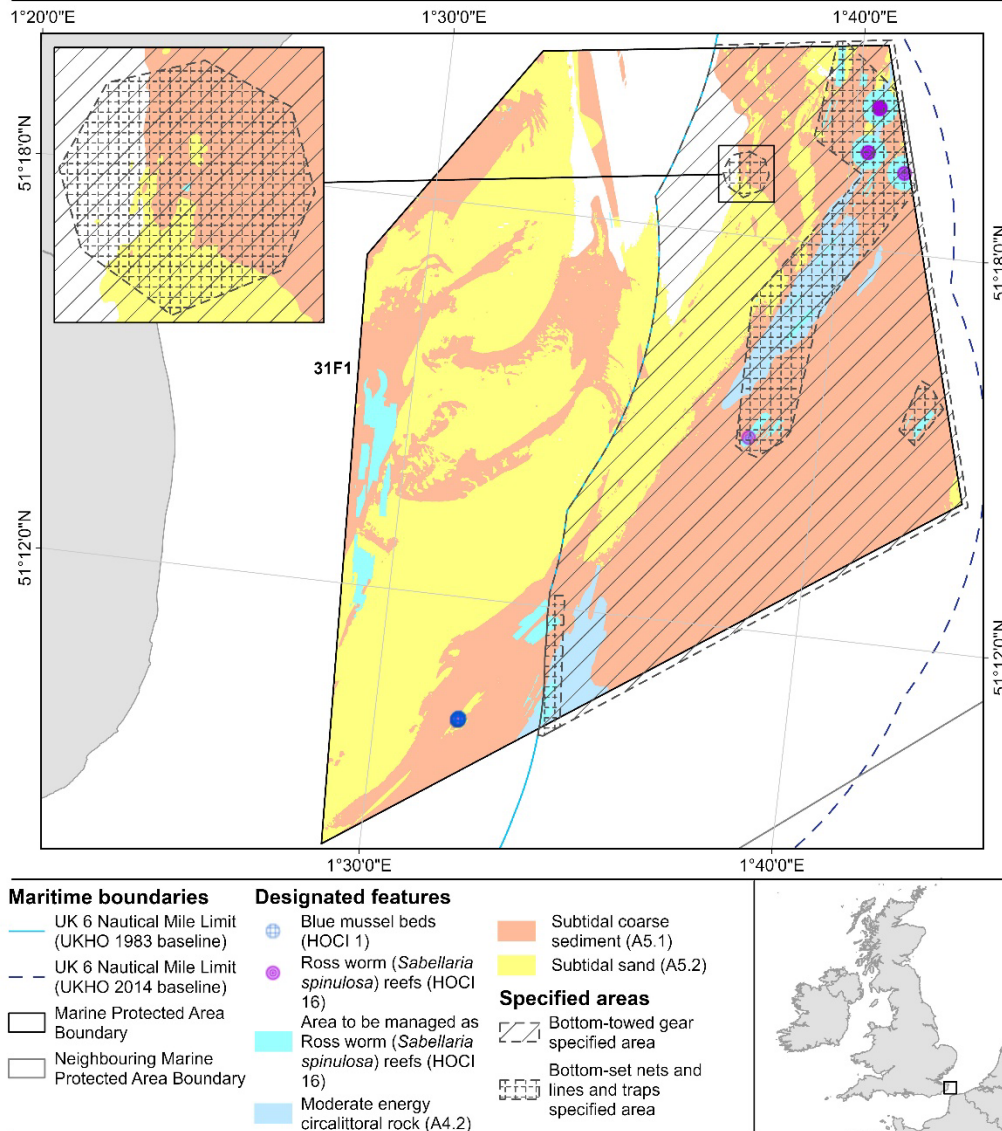
Point	Latitude (degrees and decimal minutes)	Longitude (degrees and decimal minutes)	Line to next point
34	51° 14.2606' N	01° 43.8152' E	Geodesic
35	51° 10.0428' N	01° 34.1390' E	Due west to a line drawn six nautical miles seaward of the 1983 baselines
36	51° 10.0428' N	01° 34.0135' E	Following a line drawn six nautical miles seaward of the 1983 baselines
37	51° 20.8477' N	01° 36.3957' E	Geodesic
38	51° 20.8555' N	01° 36.4823' E	Geodesic
39	51° 21.2361' N	01° 40.7197' E	Geodesic returning to Point 1



Marine
Management
Organisation

Goodwin Sands Marine Protected Area

Specified areas for the prohibition of bottom-towed gear,
bottom-set nets and lines and traps



Date of Publication: 01/11/2024

Datum: ETRS 1989

Projection: Lambert Azimuthal Equal Area

MMO Reference: 10786

Not to be used for navigation. Contains Collins Bartholomew, DEFRA, Kent & Essex IFCA, MMO, Natural England, Ordnance Survey and UKHO data. © Collins

Bartholomew, DEFRA, Kent & Essex IFCA, MMO, Natural England, Ordnance Survey and UKHO copyright and database right 2024. © ICES Statistical Rectangles dataset 2020. ICES, Copenhagen. Contains public sector information licensed under the Open Government Licence v3.0

Figure 5. Map of Goodwin Sands Marine Conservation Zone showing the locations of the bottom-set nets and lines and traps specified areas and the bottom-towed gear specified area relevant to the site. The coordinates delineating the bottom-set nets and lines and traps specified areas' boundaries are provided in Table 5a. The coordinates delineating the bottom-towed gear specified area's boundaries are provided in Table 5b. The UK 6 Nautical Mile Limit (1983 baseline) referred to as 'the 1983 baselines' within this byelaw, defines the seaward limit of inshore fisheries and conservation districts. The UK 6 Nautical Mile Limit (2014 baseline) defines the inshore limit of EU vessel access for vessels with historic access rights (where a fishing vessel licence has been issued by the MMO).

Schedule 6 – Haisborough, Hammond and Winterton Special Area of Conservation

1. The bottom-towed gear specified area means the area enclosed by lines between the co-ordinates in Table 6a.

Table 6a. Bottom-towed gear specified area relating to Haisborough, Hammond and Winterton Special Area of Conservation.

Point	Latitude (degrees and decimal minutes)	Longitude (degrees and decimal minutes)	Line to next point
1	52° 53.4796' N	01° 41.7834' E	Geodesic
2	53° 00.0408' N	01° 31.8689' E	Geodesic
3	53° 02.7958' N	01° 42.9441' E	Geodesic
4	53° 00.0574' N	02° 05.8623' E	Geodesic
5	52° 55.0428' N	02° 12.9397' E	Geodesic
6	52° 44.5840' N	02° 18.3808' E	Geodesic
7	52° 40.2499' N	02° 18.5839' E	Geodesic
8	52° 38.7314' N	02° 12.1277' E	Geodesic
9	52° 39.7230' N	02° 04.3588' E	Geodesic
10	52° 38.9274' N	01° 59.6578' E	Geodesic
11	52° 38.3446' N	01° 58.0787' E	Due west to a line drawn six nautical miles seaward of the 1983 baselines
12	52° 38.3446' N	01° 57.9921' E	Following a line drawn six nautical miles seaward of the 1983 baselines
13	52° 52.1338' N	01° 42.6244' E	Geodesic
14	52° 52.1879' N	01° 42.6244' E	Geodesic returning to Point 1

2. The traps specified areas mean the areas enclosed by lines between the co-ordinates in Table 6b.

Table 6b. Traps specified areas relating to Haisborough, Hammond and Winterton Special Area of Conservation

Point	Latitude (degrees and decimal minutes)	Longitude (degrees and decimal minutes)	Line to next point
Area 1			
15	52° 40.9528' N	02° 17.0312' E	Geodesic
16	52° 39.1434' N	02° 08.8997' E	Geodesic
17	52° 40.5967' N	02° 07.6953' E	Geodesic
18	52° 43.7023' N	02° 16.6799' E	Geodesic returning to Point 15
Area 2			
19	52° 39.1428' N	02° 00.9306' E	Geodesic
20	52° 38.9274' N	01° 59.6578' E	Geodesic

21	52° 38.3446' N	01° 58.0787' E	Due west to a line drawn six nautical miles seaward of the 1983 baselines
22	52° 38.3446' N	01° 57.9921' E	Following a line drawn six nautical miles seaward of the 1983 baselines
23	52° 44.5358' N	01° 51.9031' E	Geodesic
24	52° 44.5368' N	01° 51.9984' E	Geodesic
25	52° 44.5865' N	01° 52.2745' E	Geodesic
26	52° 42.4232' N	02° 00.7141' E	Geodesic returning to Point 19
Area 3			
27	52° 50.5554' N	02° 12.4598' E	Geodesic
28	52° 45.9973' N	02° 12.2661' E	Geodesic
29	52° 46.7208' N	02° 06.1439' E	Geodesic
30	52° 51.4987' N	02° 05.7988' E	Geodesic returning to Point 27
Area 4			
31	52° 50.8899' N	01° 53.5550' E	Geodesic
32	52° 48.0949' N	01° 48.6681' E	Due west to a line drawn six nautical miles seaward of the 1983 baselines
33	52° 48.0949' N	01° 48.5824' E	Following a line drawn six nautical miles seaward of the 1983 baselines
34	52° 51.7035' N	01° 43.3431' E	Geodesic
35	52° 51.7576' N	01° 43.3431' E	Geodesic
36	52° 52.3226' N	01° 46.0590' E	Geodesic
37	52° 52.8376' N	01° 53.1246' E	Geodesic returning to Point 31
Area 5			
38	52° 53.4648' N	02° 03.0786' E	Geodesic
39	52° 42.5275' N	02° 03.6800' E	Geodesic
40	52° 43.7107' N	02° 00.4271' E	Geodesic
41	52° 47.2752' N	01° 53.5804' E	Geodesic
42	52° 48.6383' N	01° 53.5577' E	Geodesic
43	52° 53.0772' N	02° 00.3545' E	Geodesic returning to Point 38



Marine
Management
Organisation

Haisborough, Hammond and Winterton Marine Protected Area

Specified areas for the prohibition of bottom-towed gear
and traps

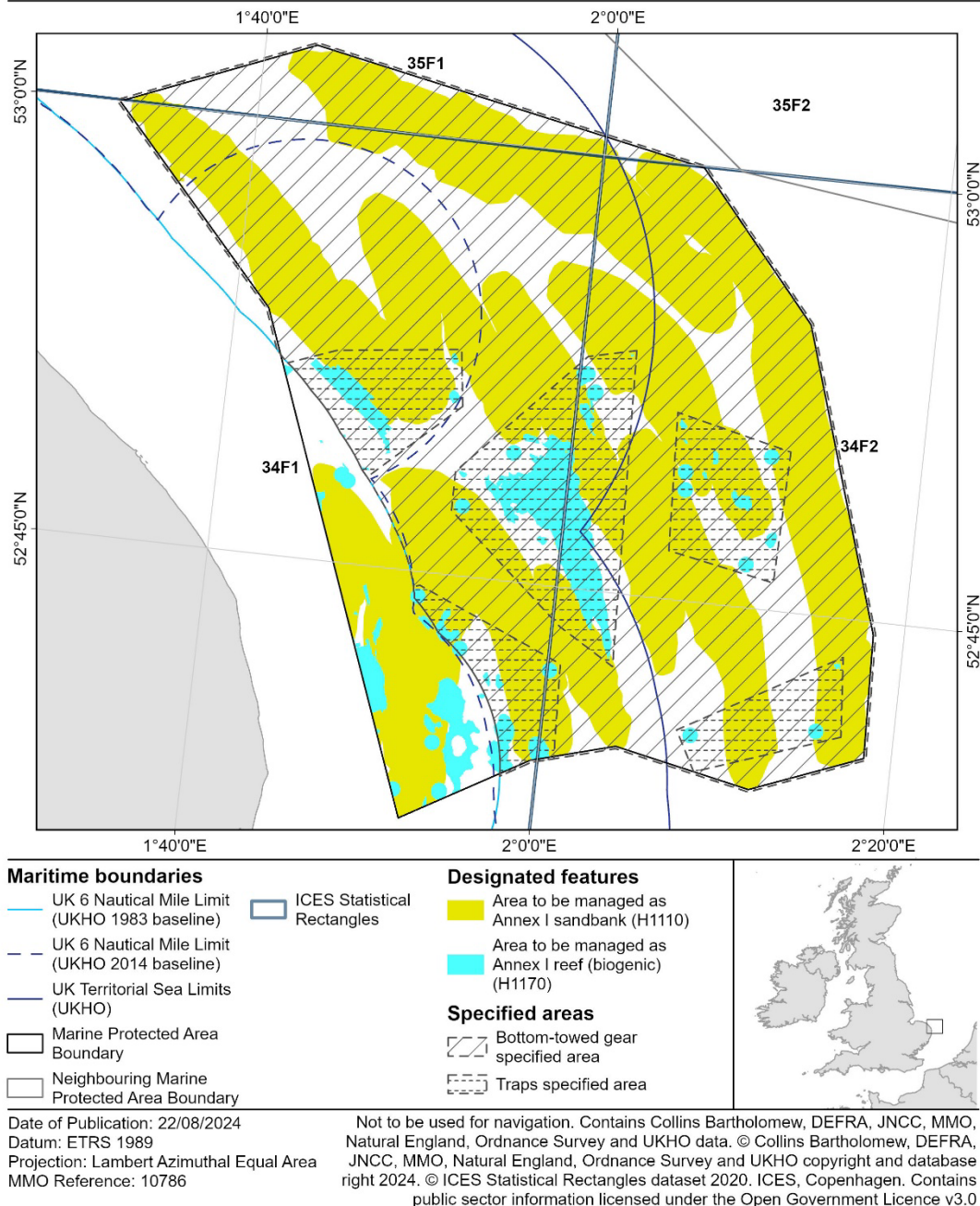


Figure 6. Map of Haisborough, Hammond and Winterton Special Area of Conservation showing the locations of the bottom-towed gear specified area and the traps specified areas relevant to the site. The coordinates delineating the bottom-towed gear specified area's boundaries are provided in Table 6a. The coordinates delineating the traps specified areas' boundaries are provided in Table 6b. The UK 6 Nautical Mile Limit (1983 baseline) referred to as 'the 1983 baselines' within this byelaw, defines the seaward limit of inshore fisheries and conservation districts. The UK 6 Nautical Mile Limit (2014 baseline) defines the inshore limit of EU vessel access for vessels with historic access rights (where a fishing vessel licence has been issued by the MMO).

Schedule 7 – Holderness Offshore Marine Conservation Zone

1. The bottom-towed gear specified area means the area enclosed by lines between the co-ordinates in Table 7:

Table 7. Bottom-towed gear specified area relating to Holderness Offshore Marine Conservation Zone

Point	Latitude (degrees and decimal minutes)	Longitude (degrees and decimal minutes)	Line to next point
1	53° 55.6667' N	00° 29.2378' E	Geodesic
2	53° 50.0904' N	00° 29.3994' E	Geodesic
3	53° 50.1896' N	00° 52.2312' E	Geodesic
4	53° 37.9204' N	00° 51.2922' E	Geodesic
5	53° 43.3238' N	00° 15.5208' E	Geodesic
6	53° 46.7746' N	00° 11.3795' E	Geodesic
7	53° 47.9560' N	00° 14.1524' E	Geodesic
8	53° 51.2674' N	00° 09.8819' E	Geodesic
9	53° 50.1970' N	00° 07.1114' E	Geodesic
10	53° 55.3916' N	00° 01.3365' E	Geodesic
11	53° 56.6884' N	00° 00.1972' E	Geodesic
12	54° 00.6564' N	00° 02.1470' W	Geodesic
13	54° 01.5606' N	00° 00.7098' E	Geodesic returning to Point 1

Holderness Offshore Marine Protected Area

Specified area for the prohibition of bottom-towed gear

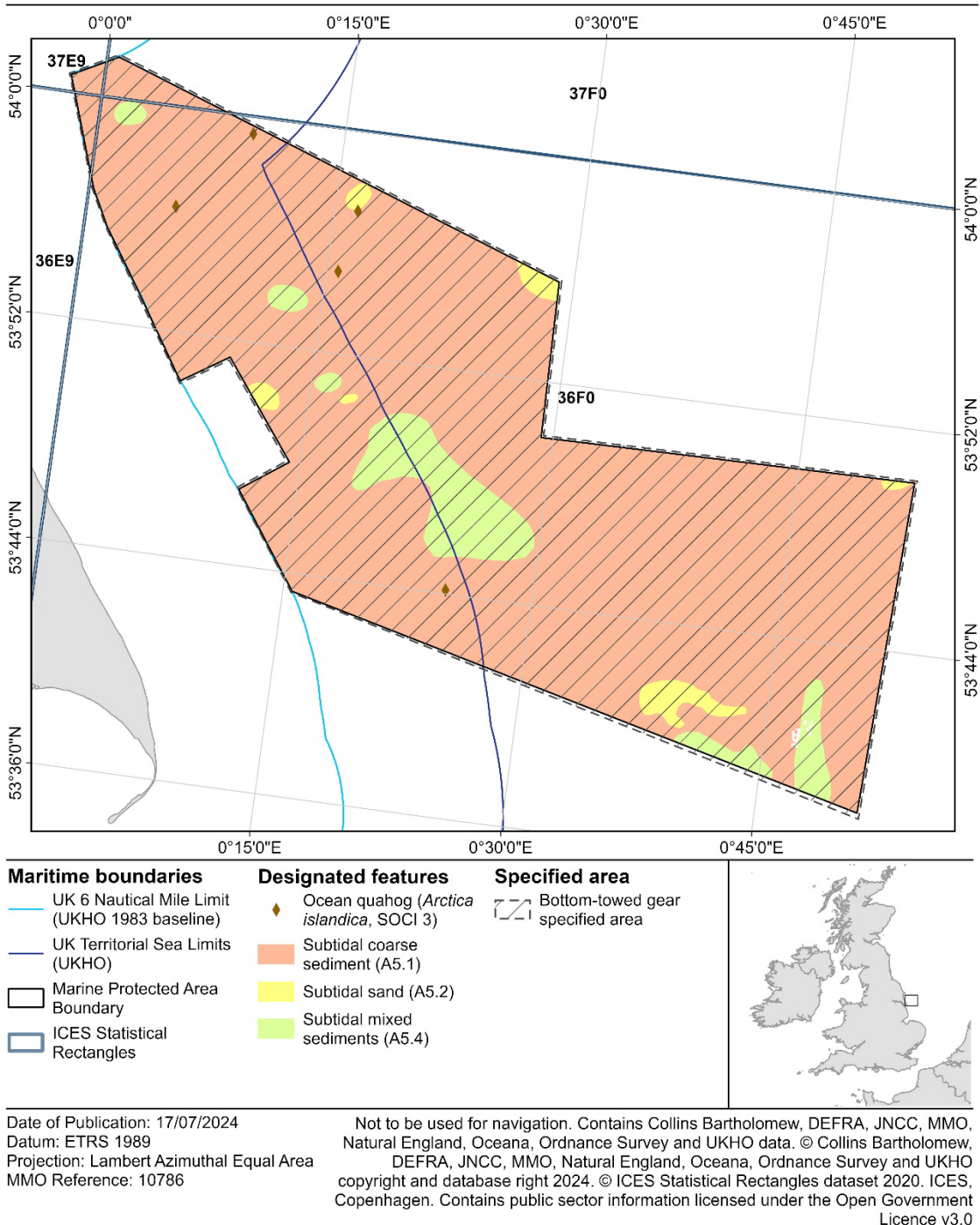


Figure 7. Map of Holderness Offshore Marine Conservation Zone showing the location of the bottom-towed gear specified area relevant to the site. The coordinates delineating the area's boundaries are provided in Table 7. The UK 6 Nautical Mile Limit (1983 baseline) referred to as 'the 1983 baselines' within this byelaw, defines the seaward limit of inshore fisheries and conservation districts.

Schedule 8 – Inner Dowsing, Race Bank and North Ridge Special Area of Conservation

1. The bottom-set nets and lines and traps specified areas mean the areas enclosed by lines between the co-ordinates in Table 8a.
2. The bottom-towed gear specified areas mean:
 - i) the areas enclosed by lines between the co-ordinates in Table 8a and additionally,
 - ii) the areas enclosed by lines between the co-ordinates in Table 8b.

Table 8a. Bottom-set nets and lines and traps specified areas and bottom-towed gear specified areas relating to Inner Dowsing, Race Bank and North Ridge Special Area of Conservation.

Point	Latitude (degrees and decimal minutes)	Longitude (degrees and decimal minutes)	Line to next point
Area 1			
1	53° 22.9302' N	00° 39.3114' E	Geodesic
2	53° 22.7196' N	00° 38.7366' E	Geodesic
3	53° 22.5210' N	00° 37.1790' E	Geodesic
4	53° 21.9282' N	00° 36.8430' E	Geodesic
5	53° 21.7824' N	00° 36.4290' E	Geodesic
6	53° 22.9746' N	00° 36.3504' E	Geodesic
7	53° 23.8806' N	00° 37.2318' E	Geodesic
8	53° 24.7452' N	00° 38.5464' E	Geodesic
9	53° 24.7350' N	00° 39.3840' E	Geodesic
10	53° 23.8548' N	00° 39.8004' E	Geodesic returning to Point 1
Area 2			
11	53° 15.3810' N	00° 38.9322' E	Geodesic
12	53° 15.2796' N	00° 39.3366' E	Geodesic
13	53° 15.0534' N	00° 39.4830' E	Geodesic
14	53° 14.8254' N	00° 39.3714' E	Geodesic
15	53° 14.6682' N	00° 38.9142' E	Geodesic
16	53° 14.8206' N	00° 38.4828' E	Geodesic
17	53° 15.0384' N	00° 38.3430' E	Geodesic
18	53° 15.2886' N	00° 38.5134' E	Geodesic returning to Point 11
Area 3			
19	53° 23.1564' N	00° 42.1692' E	Geodesic
20	53° 23.2764' N	00° 42.5748' E	Geodesic
21	53° 23.1708' N	00° 43.0488' E	Geodesic
22	53° 22.9116' N	00° 43.1556' E	Geodesic
23	53° 22.6134' N	00° 42.9666' E	Geodesic
24	53° 22.5366' N	00° 42.5892' E	Geodesic
25	53° 22.6038' N	00° 42.1842' E	Geodesic
26	53° 22.8540' N	00° 41.9748' E	Geodesic returning to Point 19

Area 4			
27	53° 21.7584' N	00° 46.7892' E	Geodesic
28	53° 22.0212' N	00° 47.0034' E	Geodesic
29	53° 22.1124' N	00° 47.5812' E	Geodesic
30	53° 21.8892' N	00° 47.8890' E	Geodesic
31	53° 21.7008' N	00° 48.0312' E	Geodesic
32	53° 21.4170' N	00° 47.9364' E	Geodesic
33	53° 21.3006' N	00° 47.3268' E	Geodesic
34	53° 21.5130' N	00° 47.0046' E	Geodesic returning to Point 27

Table 8b. Bottom-towed gear specified areas relating to Inner Dowsing, Race Bank and North Ridge Special Area of Conservation.

Point	Latitude (degrees and decimal minutes)	Longitude (degrees and decimal minutes)	Line to next point
Area 5			
35	53° 19.2636' N	00° 34.6524' E	Geodesic
36	53° 17.4366' N	00° 34.9854' E	Geodesic
37	53° 11.8710' N	00° 34.9494' E	Geodesic
38	53° 10.9146' N	00° 31.4544' E	Geodesic
39	53° 13.5102' N	00° 30.7986' E	Geodesic
40	53° 18.9786' N	00° 32.2680' E	Geodesic
41	53° 19.5354' N	00° 33.3960' E	Geodesic returning to Point 35
Area 6			
42	53° 19.6842' N	00° 55.3320' E	Geodesic
43	53° 18.2592' N	00° 56.1084' E	Geodesic
44	53° 17.5206' N	00° 56.9016' E	Geodesic
45	53° 17.4180' N	00° 58.2036' E	Geodesic
46	53° 18.8688' N	00° 56.5626' E	Geodesic
47	53° 19.3026' N	00° 56.3142' E	Geodesic
48	53° 20.6466' N	00° 56.3658' E	Geodesic
49	53° 20.9076' N	00° 56.9232' E	Geodesic
50	53° 19.8894' N	00° 59.6808' E	Geodesic
51	53° 18.6168' N	01° 01.3836' E	Geodesic
52	53° 13.6740' N	01° 00.6468' E	Geodesic
53	53° 13.9278' N	00° 58.8006' E	Geodesic
54	53° 15.9816' N	00° 52.6212' E	Geodesic
55	53° 17.0742' N	00° 49.8726' E	Geodesic
56	53° 16.2444' N	00° 49.9104' E	Geodesic
57	53° 15.6582' N	00° 50.4594' E	Geodesic
58	53° 14.8812' N	00° 52.8696' E	Geodesic
59	53° 13.9986' N	00° 52.4016' E	Geodesic
60	53° 13.4220' N	00° 53.4402' E	Geodesic
61	53° 07.2702' N	00° 59.3334' E	Geodesic
62	53° 06.2934' N	00° 59.1312' E	Geodesic
63	53° 08.2674' N	00° 55.1556' E	Geodesic

64	53° 12.3180' N	00° 50.0604' E	Geodesic
65	53° 12.7512' N	00° 48.4722' E	Geodesic
66	53° 14.4120' N	00° 43.6416' E	Geodesic
67	53° 14.9664' N	00° 42.5616' E	Geodesic
68	53° 15.2904' N	00° 42.6612' E	Geodesic
69	53° 15.5598' N	00° 43.0824' E	Geodesic
70	53° 15.7140' N	00° 43.8336' E	Geodesic
71	53° 16.9170' N	00° 43.5810' E	Geodesic
72	53° 18.8628' N	00° 43.5798' E	Geodesic
73	53° 19.5762' N	00° 44.3670' E	Geodesic
74	53° 19.8138' N	00° 45.7590' E	Geodesic
75	53° 19.6326' N	00° 48.7656' E	Geodesic
76	53° 19.1724' N	00° 50.7420' E	Geodesic
77	53° 18.7458' N	00° 51.8550' E	Geodesic
78	53° 23.5002' N	00° 47.1192' E	Geodesic
79	53° 24.1332' N	00° 47.4720' E	Geodesic
80	53° 23.9616' N	00° 49.2810' E	Geodesic
81	53° 23.6208' N	00° 49.9290' E	Geodesic returning to Point 42

Inner Dowsing, Race Bank and North Ridge Marine Protected Area

Specified areas for the prohibition of bottom-towed gear, bottom-set nets and lines and traps

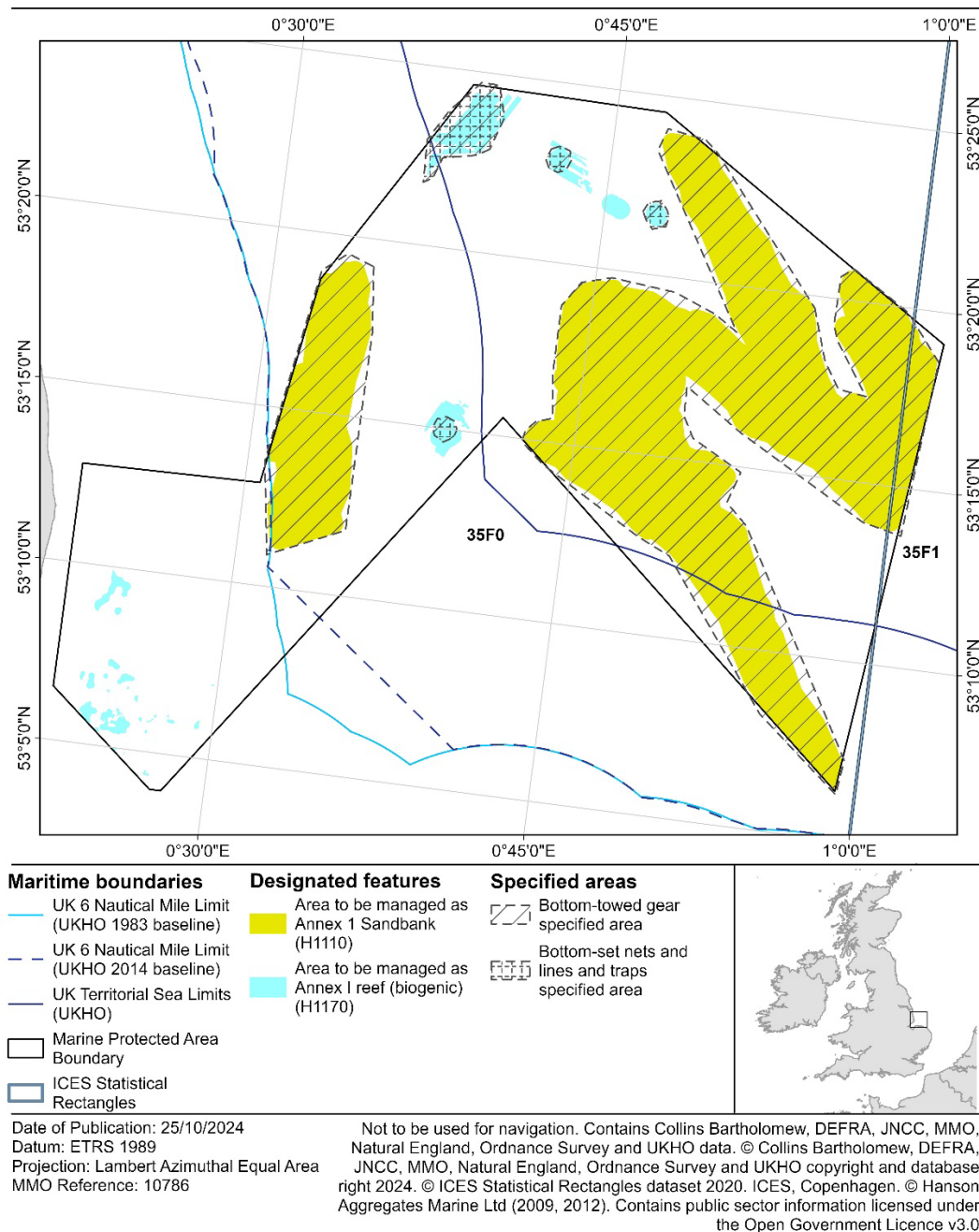


Figure 8. Map of Inner Dowsing, Race Bank and North Ridge Special Area of Conservation showing the locations of the bottom-set nets and lines and traps specified areas and the bottom-towed gear specified areas relevant to the site. The coordinates delineating the bottom-set nets and lines and traps specified areas' boundaries are provided in Table 8a. The coordinates delineating the bottom-towed gear specified areas' boundaries are provided in Table 8b. The UK 6 Nautical Mile Limit (1983 baseline) referred to as 'the 1983 baselines' within this byelaw, defines the seaward limit of inshore fisheries and conservation districts. The UK 6 Nautical Mile Limit (2014 baseline) defines the inshore limit of EU vessel access for vessels with historic access rights (where a fishing vessel licence has been issued by the MMO).

Schedule 9 – Kentish Knock East Marine Conservation Zone

1. The bottom-towed gear specified area means the area enclosed by lines between the co-ordinates in Table 9.

Table 9. Bottom-towed gear specified area relating to Kentish Knock (East) Marine Conservation Zone.

Point	Latitude (degrees and decimal minutes)	Longitude (degrees and decimal minutes)	Line to next point
1	51° 36.1598' N	01° 48.4949' E	Geodesic
2	51° 38.8890' N	01° 44.4869' E	Geodesic
3	51° 42.1559' N	01° 42.2551' E	Geodesic
4	51° 43.5506' N	01° 43.6078' E	Geodesic
5	51° 41.9775' N	01° 50.7715' E	Geodesic
6	51° 40.8536' N	01° 52.3549' E	Geodesic
7	51° 40.0859' N	01° 52.8558' E	Geodesic
8	51° 35.4188' N	01° 50.1265' E	Geodesic returning to Point 1

Kentish Knock East Marine Protected Area

Specified area for the prohibition of bottom-towed gear

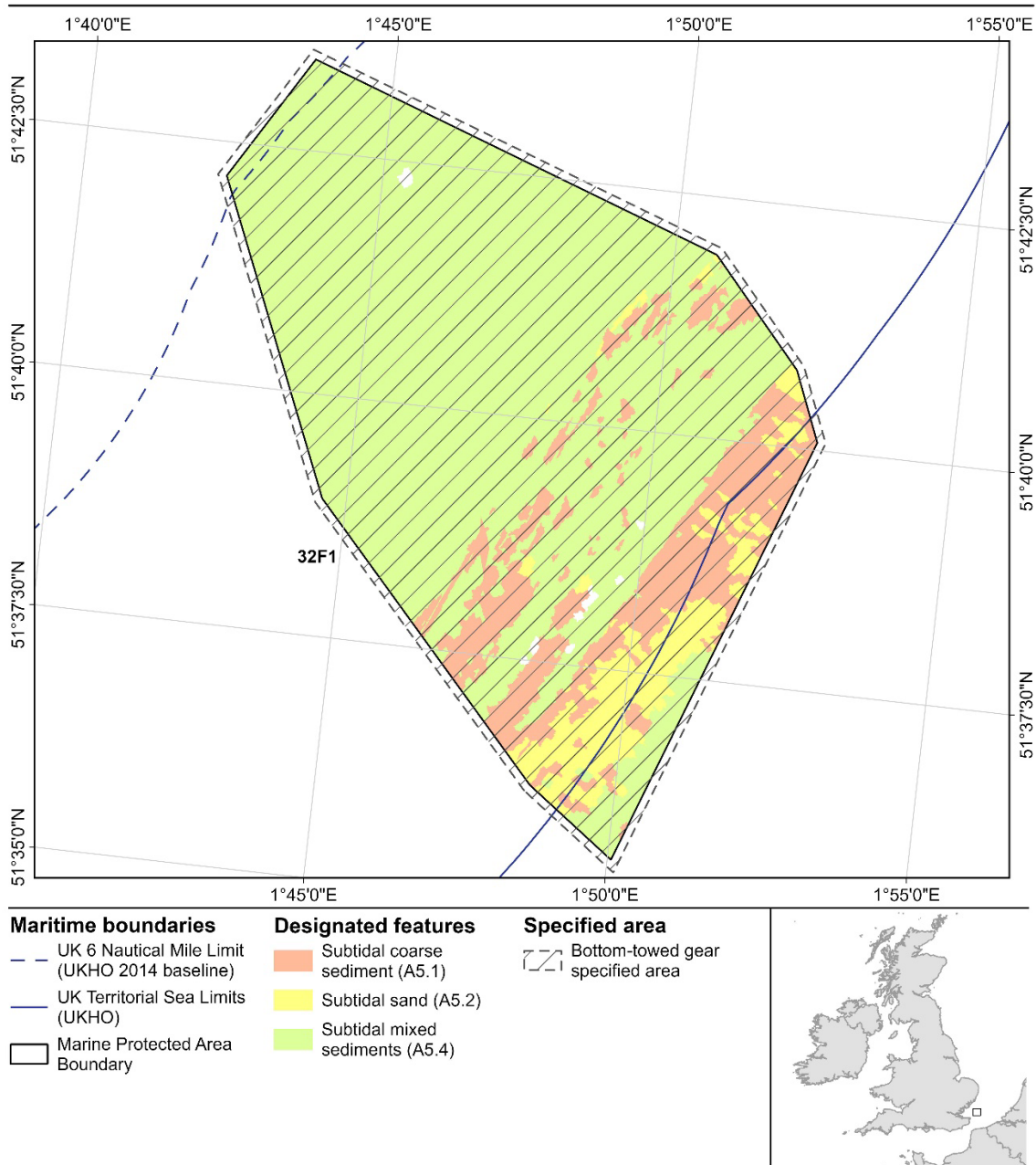


Figure 9. Map of Kentish Knock East Marine Conservation Zone showing the location of the bottom-towed gear specified area relevant to the site. The coordinates delineating the area's boundaries are provided in Table 9. The UK 6 Nautical Mile Limit (2014 baseline) defines the inshore limit of EU vessel access for vessels with historic access rights (where a fishing vessel licence has been issued by the MMO).

Schedule 10 – Margate and Long Sands Special Area of Conservation

1. The bottom-towed gear specified area means the area enclosed by lines between the co-ordinates in Table 10.

Table 10. Bottom-towed gear specified area relating to Margate and Long Sands Special Area of Conservation.

Point	Latitude (degrees and decimal minutes)	Longitude (degrees and decimal minutes)	Line to next point
1	51° 50.9890' N	01° 40.4195' E	Geodesic
2	51° 48.7133' N	01° 42.7561' E	Geodesic
3	51° 44.0658' N	01° 39.7236' E	Geodesic
4	51° 41.7603' N	01° 33.4566' E	Geodesic
5	51° 38.9950' N	01° 32.1041' E	Geodesic
6	51° 33.1240' N	01° 25.4158' E	Geodesic
7	51° 32.6314' N	01° 25.4007' E	Due south to a line drawn six nautical miles seaward of the 1983 baselines
8	51° 32.5772' N	01° 25.4007' E	Following a line drawn six nautical miles seaward of the 1983 baselines
9	51° 38.6509' N	01° 23.3727' E	Geodesic
10	51° 38.6509' N	01° 23.3791' E	Geodesic
11	51° 41.4048' N	01° 27.9948' E	Geodesic
12	51° 42.4520' N	01° 28.7050' E	Geodesic
13	51° 46.9177' N	01° 34.1288' E	Geodesic returning to Point 1



Marine
Management
Organisation

Margate and Long Sands

Marine Protected Area

Specified area for the prohibition of bottom-towed gear

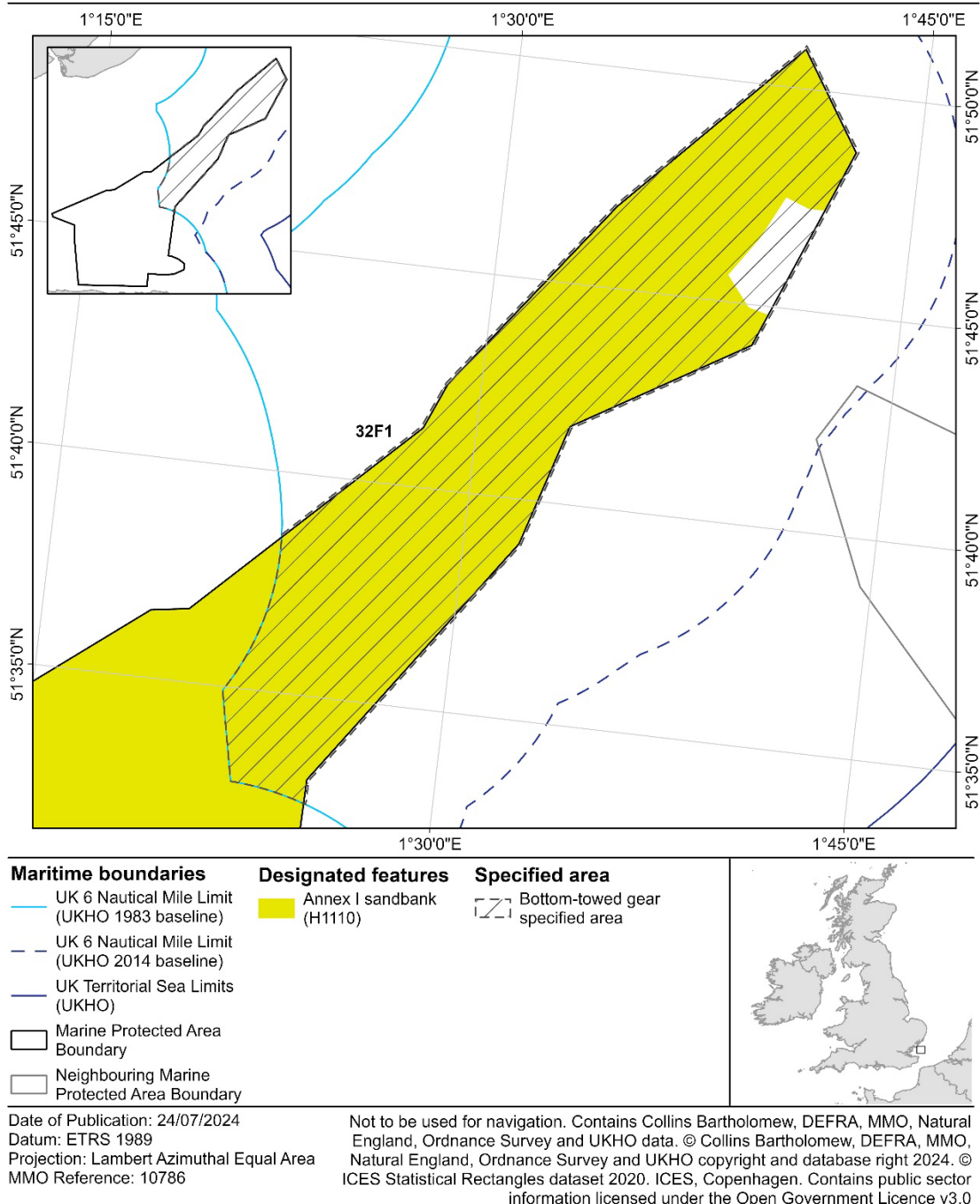


Figure 10. Map of Margate and Long Sands Special Area of Conservation showing the location of the bottom-towed gear specified area relevant to the site. The coordinates delineating the area's boundaries are provided in Table 10. The UK 6 Nautical Mile Limit (1983 baseline) referred to as 'the 1983 baselines' within this byelaw, defines the seaward limit of inshore fisheries and conservation districts. The UK 6 Nautical Mile Limit (2014 baseline) defines the inshore limit of EU vessel access for vessels with historic access rights (where a fishing vessel licence has been issued by the MMO).

Schedule 11 – Markham’s Triangle Marine Conservation Zone

1. The bottom-towed gear specified area means the area enclosed by lines between the co-ordinates in Table 11.

Table 11. Bottom-towed gear specified area relating to Markham’s Triangle Marine Conservation Zone

Point	Latitude (degrees and decimal minutes)	Longitude (degrees and decimal minutes)	Line to next point
1	53° 57.6979' N	02° 26.8116' E	Geodesic
2	54° 00.0801' N	02° 51.2521' E	Due east to the UK exclusive economic zone boundary
3	54° 00.0801' N	-	Following the UK exclusive economic zone boundary south east to specified latitude
4	53° 51.8787' N	-	Geodesic
5	53° 51.8787' N	02° 53.6254' E	Geodesic returning to Point 1



Marine
Management
Organisation

Markham's Triangle Marine Protected Area

Specified area for the prohibition of bottom-towed gear

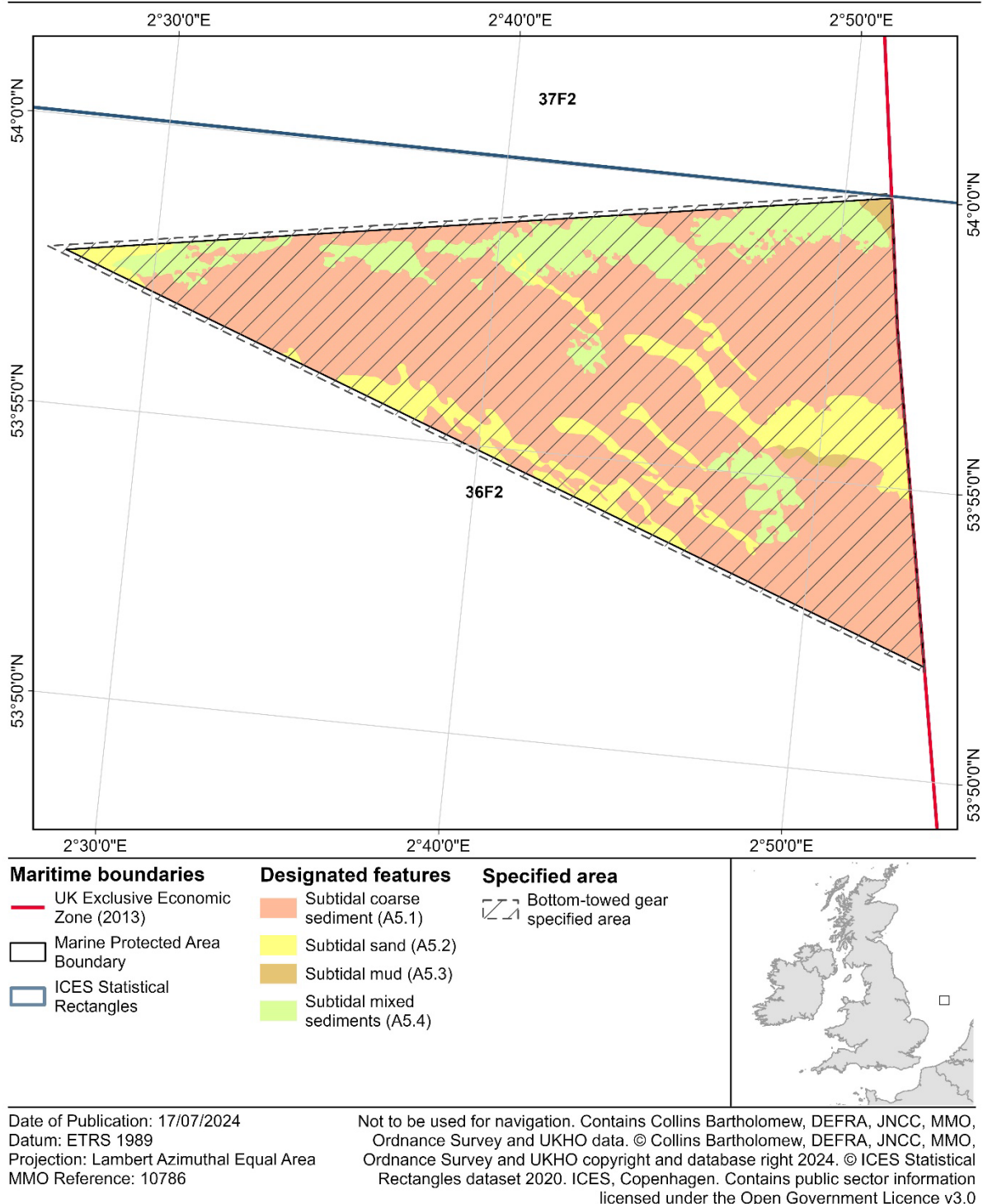


Figure 11. Map of Markham's Triangle Marine Conservation Zone showing the location of the bottom-towed gear specified area relevant to the site. The coordinates delineating the area's boundaries are provided in Table 11.

Schedule 12 - North Norfolk Sandbanks and Saturn Reef Special Area of Conservation

1. The bottom-towed gear specified area means the area enclosed by lines between the co-ordinates in Table 12a.

Table 12a. Bottom-towed gear specified area relating to North Norfolk Sandbanks and Saturn Reef Special Area of Conservation

Point	Latitude (degrees and decimal minutes)	Longitude (degrees and decimal minutes)	Line to next point
1	53° 39.6179' N	01° 53.6933' E	Geodesic
2	53° 36.0932' N	02° 03.9983' E	Geodesic
3	53° 43.0996' N	02° 24.0151' E	Geodesic
4	53° 37.0311' N	02° 36.1506' E	Geodesic
5	52° 58.7522' N	02° 22.8063' E	Geodesic
6	52° 59.8761' N	02° 08.0357' E	Geodesic
7	53° 11.9935' N	01° 42.8962' E	Geodesic
8	53° 23.4449' N	01° 36.2695' E	Geodesic
9	53° 27.0007' N	01° 54.9715' E	Geodesic
10	53° 40.9450' N	01° 33.1601' E	Geodesic
11	53° 45.1106' N	01° 36.9457' E	Geodesic returning to Point 1

2. The traps specified areas mean the areas enclosed by lines between the co-ordinates in Table 12b.

Table 12b. Traps specified areas relating to North Norfolk Sandbanks and Saturn Reef Special Area of Conservation.

Point	Latitude (degrees and decimal minutes)	Longitude (degrees and decimal minutes)	Line to next point
Area 1			
12	53° 05.9329' N	02° 21.4256' E	Geodesic
13	52° 59.0908' N	02° 18.3562' E	Geodesic
14	52° 59.2901' N	02° 15.7369' E	Geodesic
15	53° 06.6144' N	02° 02.4993' E	Geodesic
16	53° 11.6863' N	01° 59.6073' E	Geodesic
17	53° 12.0423' N	02° 00.1786' E	Geodesic returning to Point 12
Area 2			
18	53° 15.4404' N	01° 45.0505' E	Geodesic
19	53° 15.2649' N	01° 44.7252' E	Geodesic
20	53° 16.1531' N	01° 43.8416' E	Geodesic
21	53° 16.4255' N	01° 44.2297' E	Geodesic returning to Point 18
Area 3			
22	53° 17.7492' N	02° 02.6671' E	Geodesic
23	53° 16.4392' N	02° 00.1674' E	Geodesic
24	53° 21.1381' N	01° 54.6964' E	Geodesic

25	53° 21.9086' N	01° 56.1328' E	Geodesic returning to Point 22
Area 4			
26	53° 29.0250' N	01° 59.2216' E	Geodesic
27	53° 27.0007' N	01° 54.9715' E	Geodesic
28	53° 28.8609' N	01° 52.0618' E	Geodesic
29	53° 30.3696' N	01° 55.4830' E	Geodesic
30	53° 30.7454' N	01° 57.9086' E	Geodesic
31	53° 30.3926' N	01° 59.0616' E	Geodesic returning to Point 26
Area 5			
32	53° 33.5847' N	02° 09.9784' E	Geodesic
33	53° 27.8732' N	02° 09.3076' E	Geodesic
34	53° 30.5240' N	02° 02.5319' E	Geodesic
35	53° 31.6069' N	02° 04.2436' E	Geodesic
36	53° 34.1736' N	02° 04.3791' E	Geodesic
37	53° 34.7249' N	02° 07.7326' E	Geodesic returning to Point 32

North Norfolk Sandbanks and Saturn Reef Marine Protected Area

Specified areas for the prohibition of bottom-towed gear and traps

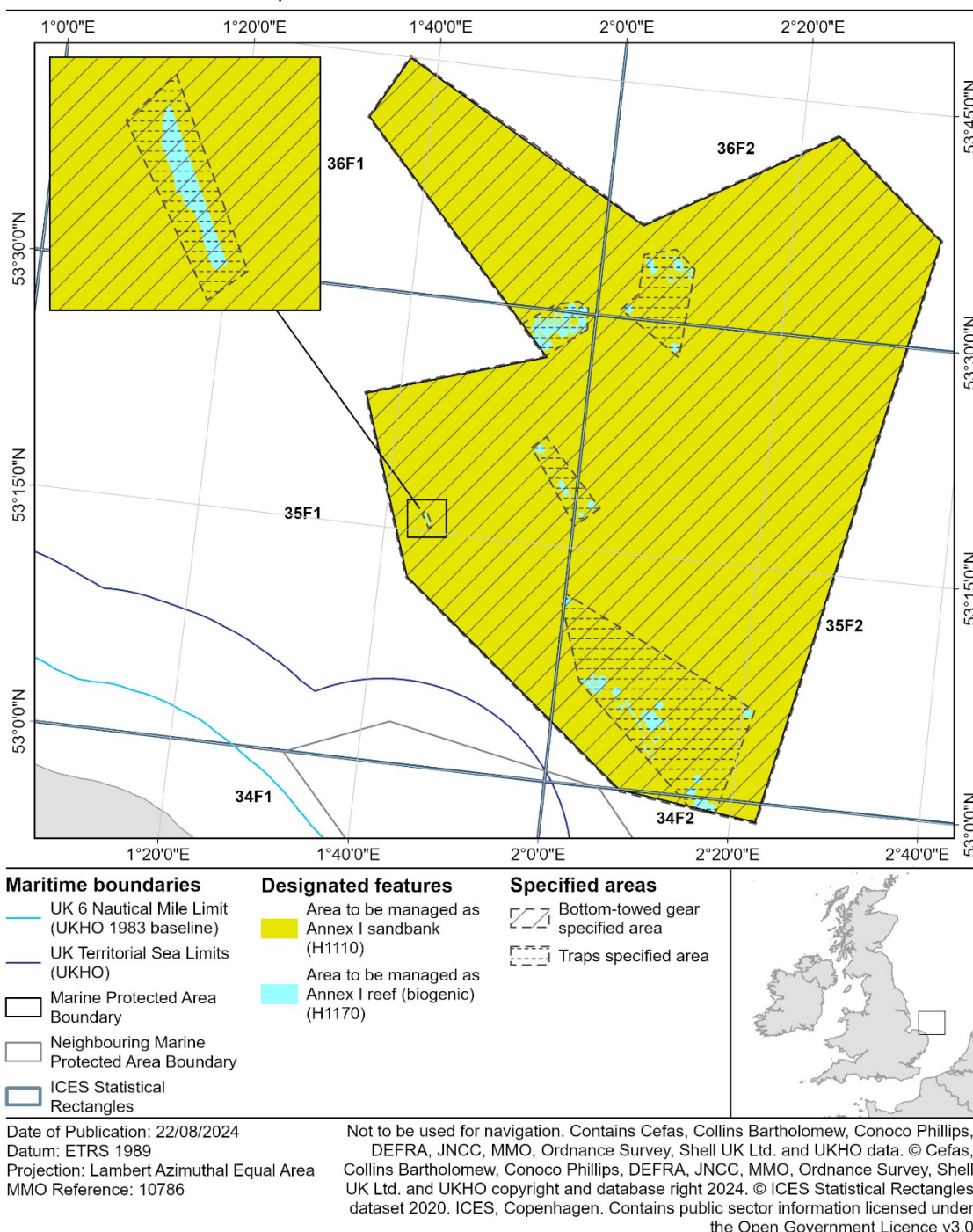


Figure 12. Map of North Norfolk Sandbanks and Saturn Reef Special Area of Conservation showing the locations of the bottom-towed gear specified area and the traps specified areas relevant to the site. The coordinates delineating the bottom-towed gear specified area's boundaries are provided in Table 12a. The coordinates delineating the traps specified areas' boundaries are provided in Table 12b. The UK 6 Nautical Mile Limit (1983 baseline) referred to as 'the 1983 baselines' within this byelaw, defines the seaward limit of inshore fisheries and conservation districts.

Schedule 13 – Orford Inshore Marine Conservation Zone

1. The bottom-towed gear specified area means the area enclosed by lines between the co-ordinates in Table 13.

Table 13. Bottom-towed gear specified area relating to Orford Inshore Marine Conservation Zone

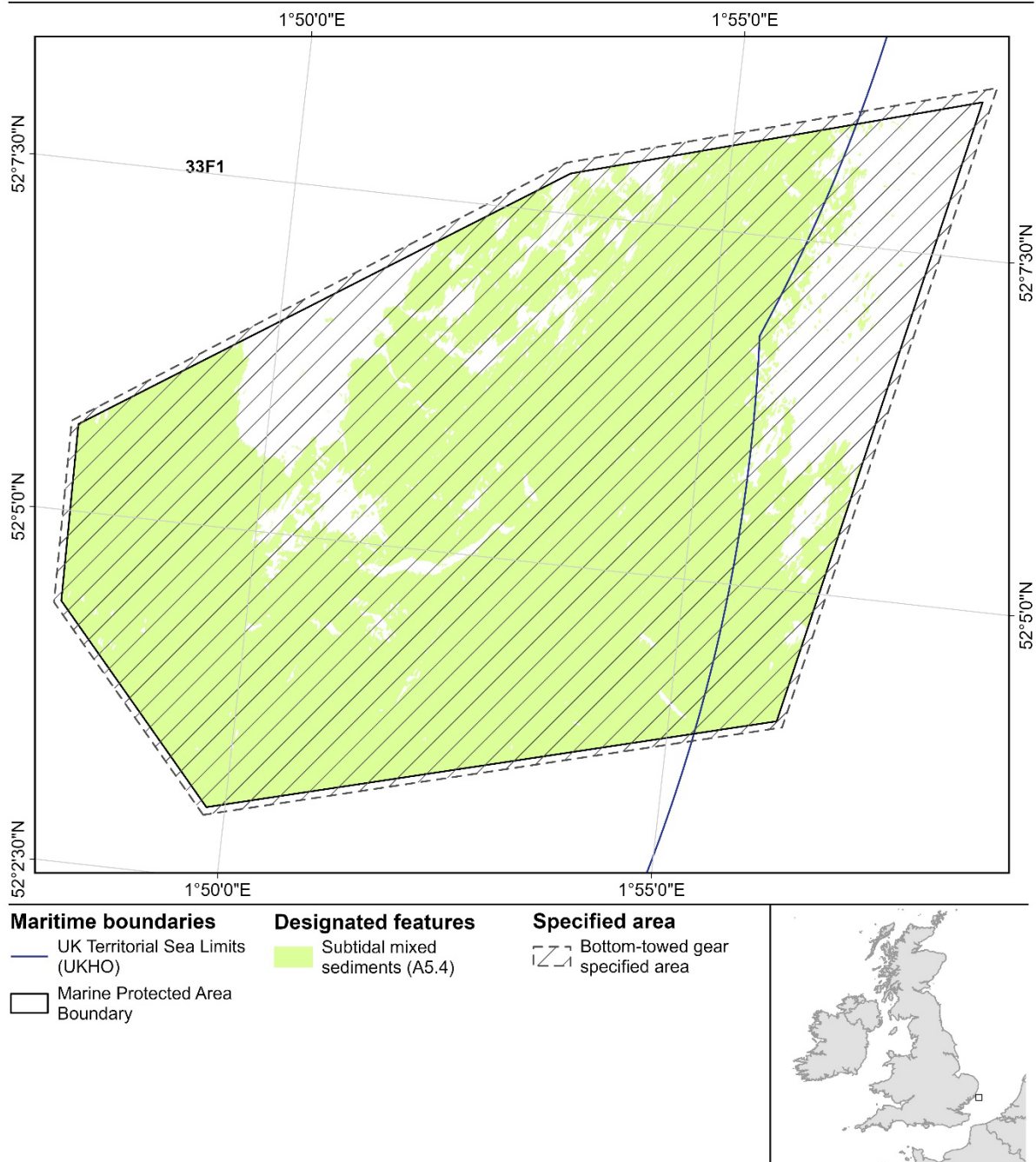
Point	Latitude (degrees and decimal minutes)	Longitude (degrees and decimal minutes)	Line to next point
1	52° 02.9492' N	01° 49.7589' E	Geodesic
2	52° 04.3374' N	01° 47.7627' E	Geodesic
3	52° 05.6402' N	01° 47.7309' E	Geodesic
4	52° 07.8629' N	01° 53.1064' E	Geodesic
5	52° 08.7323' N	01° 57.9817' E	Geodesic
6	52° 04.0284' N	01° 56.3184' E	Geodesic returning to Point 1



Marine
Management
Organisation

Orford Inshore Marine Protected Area

Specified area for the prohibition of bottom-towed gear



Date of Publication: 19/07/2024
Datum: ETRS 1989
Projection: Lambert Azimuthal Equal Area
MMO Reference: 10786

Not to be used for navigation. Contains Cefas, Collins Bartholomew, DEFRA, JNCC, MMO, Natural England, Ordnance Survey and UKHO data. © Cefas, Collins Bartholomew, DEFRA, JNCC, MMO, Natural England, Ordnance Survey and UKHO copyright and database right 2024. © ICES Statistical Rectangles dataset 2020. ICES, Copenhagen. Contains public sector information licensed under the Open Government Licence v3.0

Figure 13. Map of Orford Inshore Marine Conservation Zone showing the location of the bottom-towed gear specified area relevant to the site. The coordinates delineating the area's boundaries are provided in Table 13.

Schedule 14 Swallow Sand Marine Conservation Zone

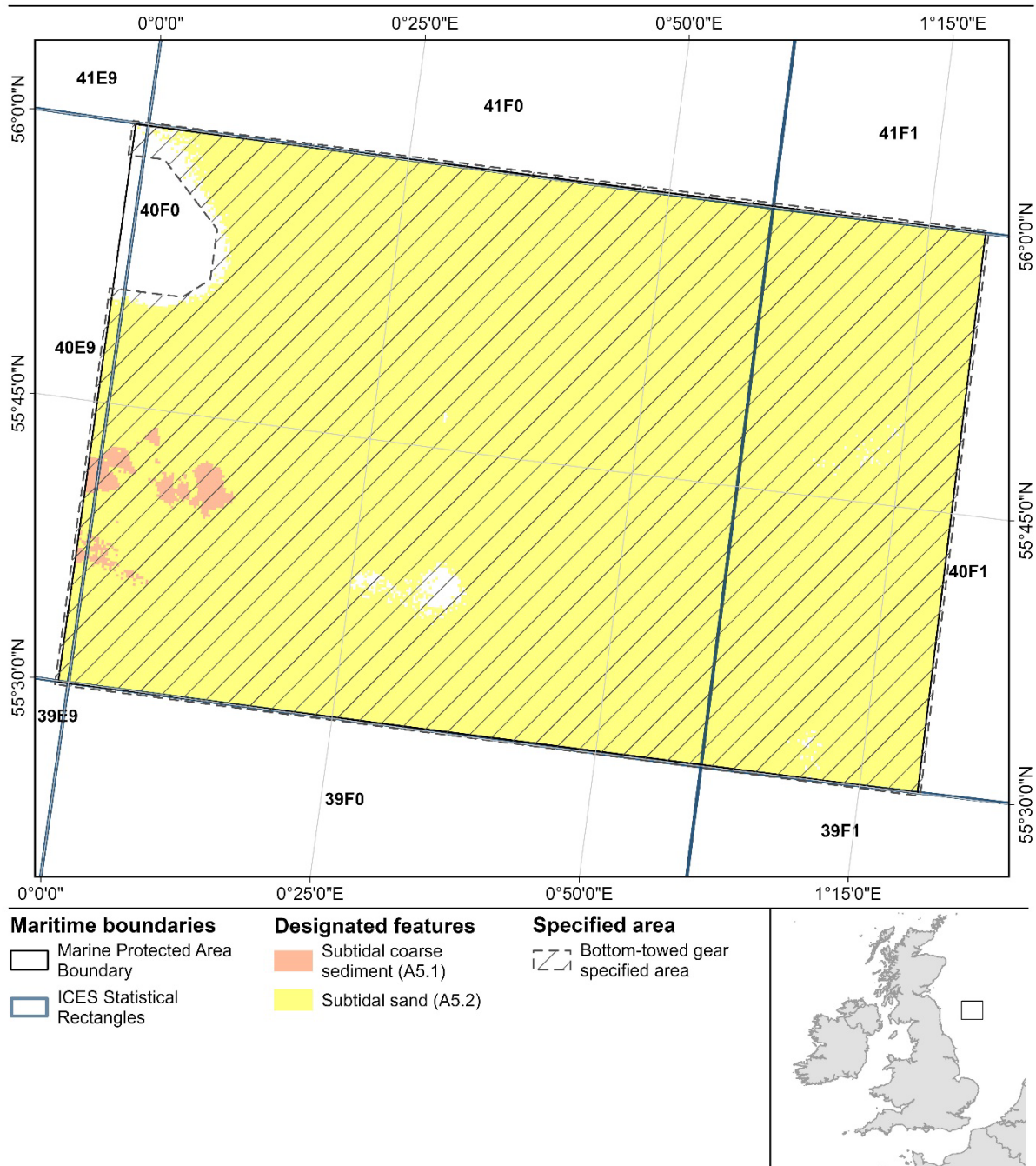
1. The bottom-towed gear specified area means the area enclosed by lines between the co-ordinates in Table 14.

Table 14. Bottom-towed gear specified area relating to Swallow Sand Marine Conservation Zone

Point	Latitude (degrees and decimal minutes)	Longitude (degrees and decimal minutes)	Line to next point
1	55° 29.8133' N	00° 01.2327' W	Geodesic
2	55° 51.1167' N	00° 01.4296' W	Geodesic
3	55° 51.1701' N	00° 05.5181' E	Geodesic
4	55° 52.2954' N	00° 07.9025' E	Geodesic
5	55° 54.9901' N	00° 07.8891' E	Geodesic
6	55° 58.2934' N	00° 01.9768' E	Geodesic
7	55° 58.2716' N	00° 01.4836' W	Geodesic
8	56° 00.1034' N	00° 01.4906' W	Geodesic
9	56° 00.2082' N	01° 20.6718' E	Geodesic
10	55° 29.8864' N	01° 20.7893' E	Geodesic returning to Point 1

Swallow Sand Marine Protected Area

Specified area for the prohibition of bottom-towed gear



Date of Publication: 19/07/2024
 Datum: ETRS 1989
 Projection: Lambert Azimuthal Equal Area
 MMO Reference: 10786

Not to be used for navigation. Contains British Geological Survey, Cefas, Collins Bartholomew, DEFRA, JNCC, MMO, Ordnance Survey and UKHO data. © British Geological Survey, Cefas, Collins Bartholomew, DEFRA, JNCC, MMO, Ordnance Survey and UKHO copyright and database right 2024. © ICES Statistical Rectangles dataset 2020. ICES, Copenhagen. Contains public sector information licensed under the Open Government Licence v3.0

Figure 14. Map of Swallow Sand Marine Conservation Zone showing the location of the bottom-towed gear specified area relevant to the site. The coordinates delineating the area's boundaries are provided in Table 14.

Explanatory Note

(This note is not part of the Byelaw)

This Byelaw conserves the following marine fauna and habitats:

- i. Annex 1 reefs,
- ii. High energy circalittoral rock,
- iii. Moderate energy circalittoral rock,
- iv. Ocean quahog (*Arctica islandica*),
- v. Sandbanks which are slightly covered by seawater all the time,
- vi. Sea-pen and burrowing megafauna communities,
- vii. Subtidal coarse sediment,
- viii. Subtidal mixed sediments,
- ix. Subtidal mud and
- x. Subtidal sand.

The Byelaw prohibits the use of bottom-towed fishing gear, bottom-set nets and lines, and traps, each of which is defined in the Byelaw, in the relevant specified areas as defined in the Schedules to this Byelaw. The specified areas relate to the marine protected areas as listed at paragraph 2. The Byelaw also requires bottom-towed fishing gear, bottom-set nets and lines and traps to be inboard, lashed and stowed when present within the relevant specified areas. Failure to comply with the provisions of the Byelaw constitutes an offence contrary to section 139 of the Marine and Coastal Access Act 2009.

The following Byelaws are revoked by this Byelaw: -

The Dogger Bank Special Area of Conservation (Specified Area) Bottom Towed Fishing Gear Byelaw 2022;

The Inner Dowsing, Race Bank and North Ridge Special Area of Conservation (Specified Areas) Prohibited Fishing Gears Byelaw 2022;

The Margate and Long Sands European Marine Site (Specified Areas) Bottom Towed Fishing Gear Byelaw 2017; and

The Marine Protected Areas Bottom Towed Fishing Gear Byelaw 2023.