

MMO Stage 2 marine protected areas (MPAs): Information sheet

Summary

The Marine Management Organisation (MMO) is assessing the impact of bottom towed fishing gear activity on rock and reef habitats and certain related species in 13 marine protected areas (MPAs)

Background

MMO is responsible for regulating the impacts of fishing on protected habitats and species within MPAs in English waters offshore of 6 nautical miles to ensure it is compatible with the MPAs' conservation objectives. These objectives are set by [Natural England](#) and the Joint Nature Conservation Committee ([JNCC](#)).

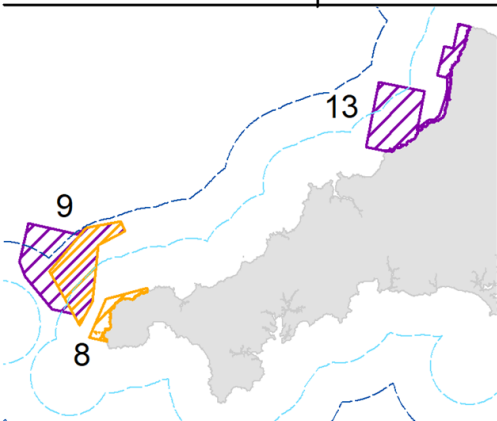
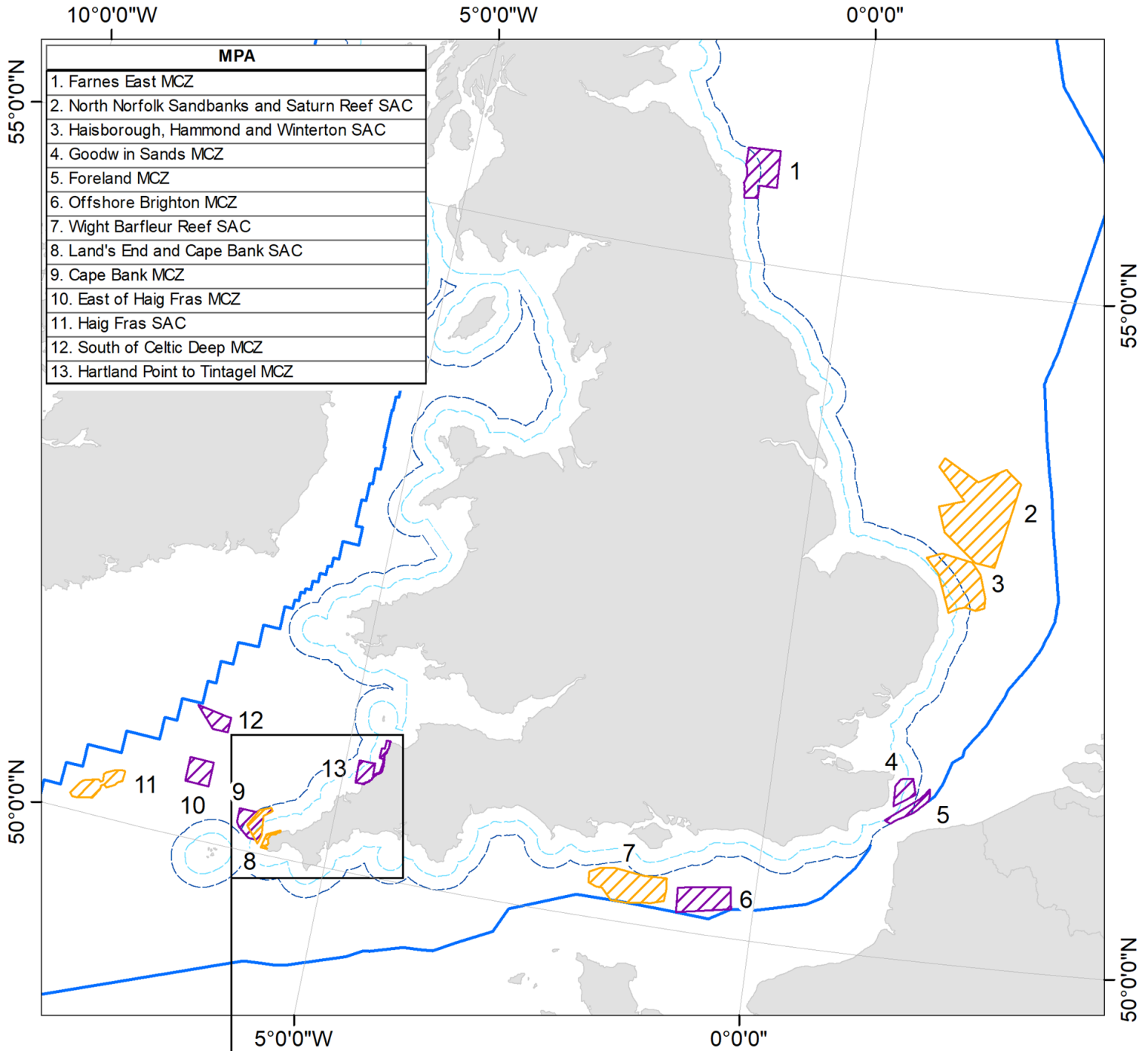
MMO has conducted a draft assessment of the impacts of bottom towed fishing in 13 MPAs containing important habitats and species such as reef, rock, sponges, and sea fans. The draft assessment currently indicates that where bottom towed fishing occurs, the conservation objectives of these habitats and species will not be achieved. The table below details the relevant habitats and species found in these 13 MPAs and the map shows the MPA locations. If you want to learn more about these different habitats and species, please see their relevant information sheets (Ross worm reefs are discussed under Annex I Reefs, while pink sea fans and fragile sponge and anthozoan communities on subtidal rocky habitats are discussed under Circalittoral rock.) Further information is also available via [Natural England's Conservation Advice](#) and the [JNCC Site Information Centre](#).

MPA	Vulnerable Habitat or Species (being considered at this stage)
Cape Bank Marine Conservation Zone (MCZ)	Circalittoral rock (moderate energy)
East of Haig Fras MCZ	Circalittoral rock (moderate and high energy)
Farnes East MCZ	Circalittoral rock (moderate energy)
Foreland MCZ	Circalittoral rock (moderate and high energy)
Goodwin Sands MCZ	Circalittoral rock (moderate energy) Ross worm (<i>Sabellaria spinulosa</i>) reefs
Haig Fras Special Area of Conservation (SAC)	Annex I Reef: rocky
Haisborough, Hammond and Winterton SAC	Annex I Reef: biogenic
Hartland Point to Tintagel MCZ	Circalittoral rock (moderate and high energy) Fragile sponge and anthozoan communities on subtidal rocky habitats Pink sea fans
Land's End and Cape Bank SAC	Annex I Reef: rocky
North Norfolk Sandbanks and Saturn Reef SAC	Annex I Reef: biogenic
Offshore Brighton MCZ	Circalittoral rock (high energy)
South of Celtic Deep MCZ	Circalittoral rock (moderate and high energy)
Wight-Barfleur Reef SAC	Annex I Reef: rocky





Stage 2 Marine Protected Areas



- 6 Nautical Mile Limit, 1983 baseline (UKHO)
- 12 Nautical Mile Limit, 1983 baseline (UKHO)
- UK Exclusive Economic Zone (2013)
- Marine Conservation Zones
- Special Areas of Conservation

