



14 May 2022

Dear stakeholder,

Marine Management Organisation call for evidence on the draft fisheries assessment for 13 MPAs

This letter provides information on the call for evidence on the MMO draft fisheries assessments for 13 MPAs. This assessment covers the interaction between bottom towed fishing gear and rock, reef and related designated features. Our intention is that the MPA fisheries assessment will be finalised, and any necessary management implemented by summer 2023.

The sites and designated features considered in the draft MPA fisheries assessment are set out in Table 1 and the locations of these MPAs in English waters displayed in Figure 1.

All documents referred to below can be found [here](#).





Marine Management Organisation

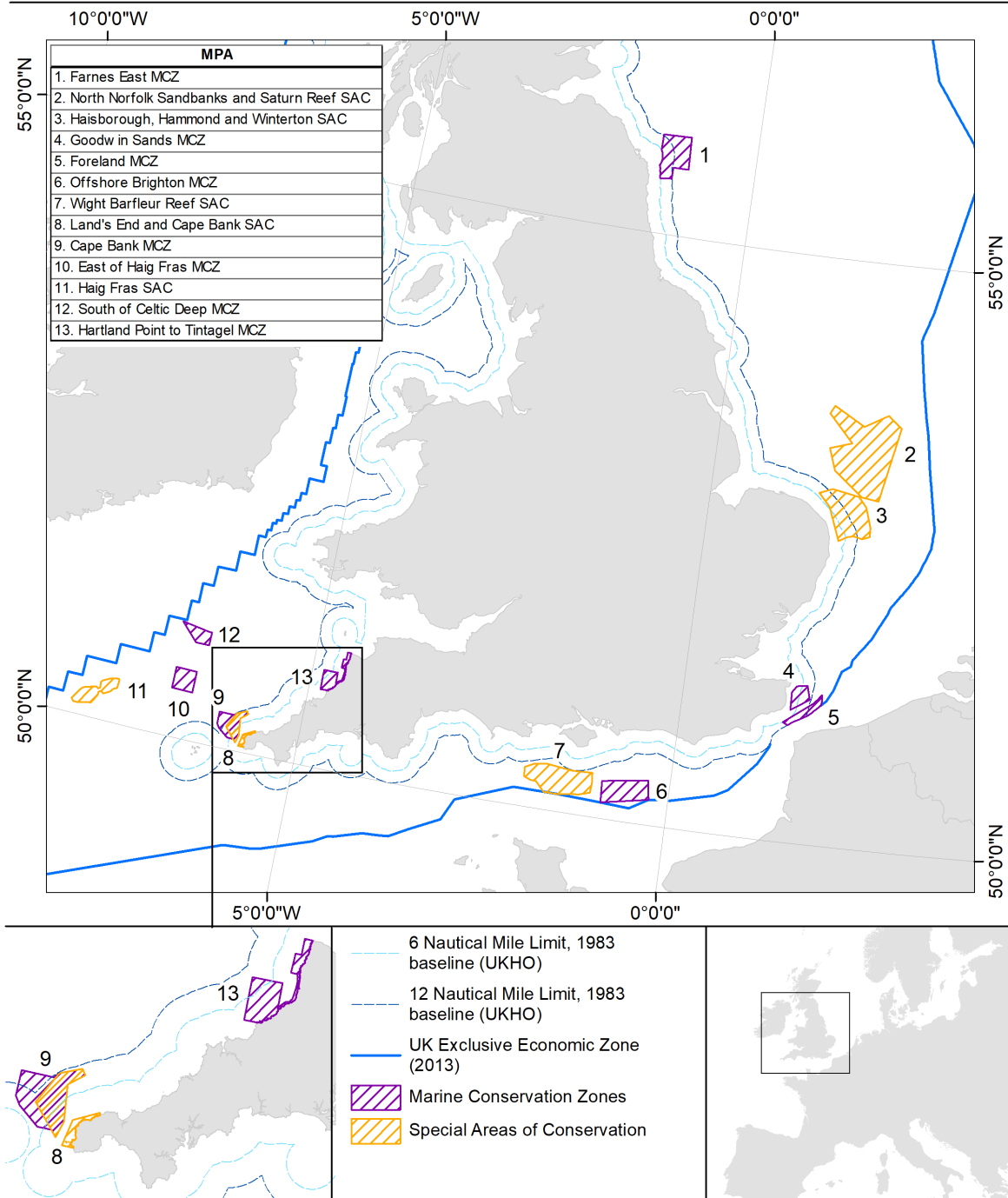
Marine Protected Area	Feature(s)
Cape Bank Marine Conservation Zone (MCZ)	Moderate energy circalittoral rock
East of Haig Fras MCZ	High energy circalittoral rock, Moderate energy circalittoral rock
Farnes East MCZ	Moderate energy circalittoral rock
Foreland MCZ	High energy circalittoral rock, Moderate energy circalittoral rock
Haig Fras Special Area of Conservation (SAC)	Annex I Reef
Goodwin Sands MCZ	Moderate energy circalittoral rock, Annex I Reef
Haisborough, Hammond and Winterton SAC	Annex I Reef
Hartland Point to Tintagel MCZ	High energy circalittoral rock, Moderate energy circalittoral rock, Fragile sponge and anthozoan communities on subtidal rocky habitats, Pink sea-fan (<i>Eunicella verrucosa</i>)
Land's End and Cape Bank SAC	Annex I Reef
North Norfolk Sandbanks and Saturn Reef SAC	Annex I Reef
Offshore Brighton MCZ	High energy circalittoral rock
South of Celtic Deep MCZ	Moderate energy circalittoral rock
Wight-Barfleur Reef SAC	Annex I Reef

Table 1: MPAs and designated features included as part of Stage 2





Stage 2 Marine Protected Areas



Date of Publication: 28/03/2022
 Coordinate System: ETRS 1989 LAEA
 Projection: Lambert Azimuthal Equal Area
 Datum: ETRS 1989
 MMO Reference: 10562

Not to be used for navigation.
 Contains Collins Bartholomew, Ordnance Survey, UK Hydrographic Office and MMO data. © Collins Bartholomew, Ordnance Survey, UKHO and MMO copyright and database right 2021. © ICES Statistical Rectangles dataset 2015. ICES, Copenhagen. Contains public sector information licensed under the Open Government Licence v3.0.

Figure 1: Map illustrating the location of the MPAs considered during Stage 2.





Draft MPA Fisheries Assessment

We have created a draft assessment of the impact of fishing using bottom towed gear on certain designated features, including bedrock reef and biogenic reef features, in 13 MPAs.

These features are being considered in Stage 2, as they are amongst the most sensitive to the impacts of bottom towed gear fishing.

The assessment is based on the best available evidence and advice from the statutory nature conservation bodies and sets out high-level management options for each site.

The assessment concludes that the use of bottom towed fishing gear over these features may be hindering the conservation objectives of MCZs or having an adverse effect on the integrity of SACs.

The purpose of this call for evidence is to seek additional evidence and views to inform the draft MPA fisheries assessment.

Management Options

We are considering the following high-level management options to further the conservation objectives of Stage 2 MPAs:

Option 1. No fisheries restrictions. Introduce a monitoring and control plan within the site.

Option 2. No statutory restrictions. Introduce a voluntary agreement.

Option 3. Reduction of pressures associated with bottom towed fishing gear(s) of concern, through zoned management (partial site prohibition of these gears over areas of highly sensitive designated features).

Option 4. Removal of pressures associated with bottom towed fishing gear(s) of concern through a whole site prohibition of these gears.

Specific management measures will be developed following the call for evidence. Any management measures will apply equally to all fishing vessels, regardless of nationality and will be subject to appropriate levels of consultation.





Marine Management Organisation

Questions to consider

Please provide us with any information you feel could be relevant to inform our assessment and decision for management at these sites. We are particularly interested in understanding the following:

- Do you have any additional information about the location, condition, or sensitivity of the designated features assessed?
- Do you have information about the level or nature of fishing activity within the site?

Please respond no later than **10 July 2022**.

You can respond by completing our online survey by visiting:

<https://consult.defra.gov.uk/mmo/call-for-evidence-stage-2>

If you are not able to respond through the survey, you can respond to the following questions using the contact details below.

1. Would you like your response to be confidential?
2. What is your name?
3. What is your email address
4. Are you responding as an individual or on behalf of an organisation (please detail which organisation)?

For the following questions, please provide a response per marine protected area of interest or specify if your response is relevant to all sites

5. Do you have any additional information about the location, condition or sensitivity of the assessed designated feature(s)?
6. Do you have information about the level or nature of fishing activity within the site?

If you have further information that you would like to provide as a document, please attach this to your response. Any feature evidence submitted will be passed to Natural England or JNCC for potential inclusion in MPA feature maps, unless you indicate otherwise. Please note data submitted may not be included in updated maps. This will be dependent on the quality of the data submitted compared with that which is already present. For any data submitted please include sufficient details of





Marine Management Organisation

the evidence collection including date, location, surveyor, methodology etc. Should you have concerns regarding how your data will be used, processed and protected please get in touch to complete a data provider agreement.

conservation@marinemanagement.org.uk or call the MMO helpline on: 0300 123 1032.

By email: conservation@marinemanagement.org.uk

By telephone: 0300 123 1032

In writing:

Stage 2 draft MPA fisheries assessment call for evidence
Marine Conservation Team
Marine Management Organisation
Lancaster House
Newcastle upon Tyne
NE4 7YH

Further information on the MMO's call for evidence on Stage 2 Fisheries MPA assessment can be found at <https://www.gov.uk/government/publications/managing-fisheries-in-marine-protection-areas-call-for-evidence>

More information on the MMO byelaw making process can be found at www.gov.uk/guidance/marine-conservation-byelaws

If you have any further questions or queries, please email conservation@marinemanagement.org.uk or call the MMO helpline on: 0300 123 1032.

Yours faithfully,

Nick Greenwood

Head of Marine Conservation

Marine Management Organisation

