

**Department for Environment, Food and Rural Affairs**

**Marine Conservation Zones: Consultation  
on proposals for designation in 2014**

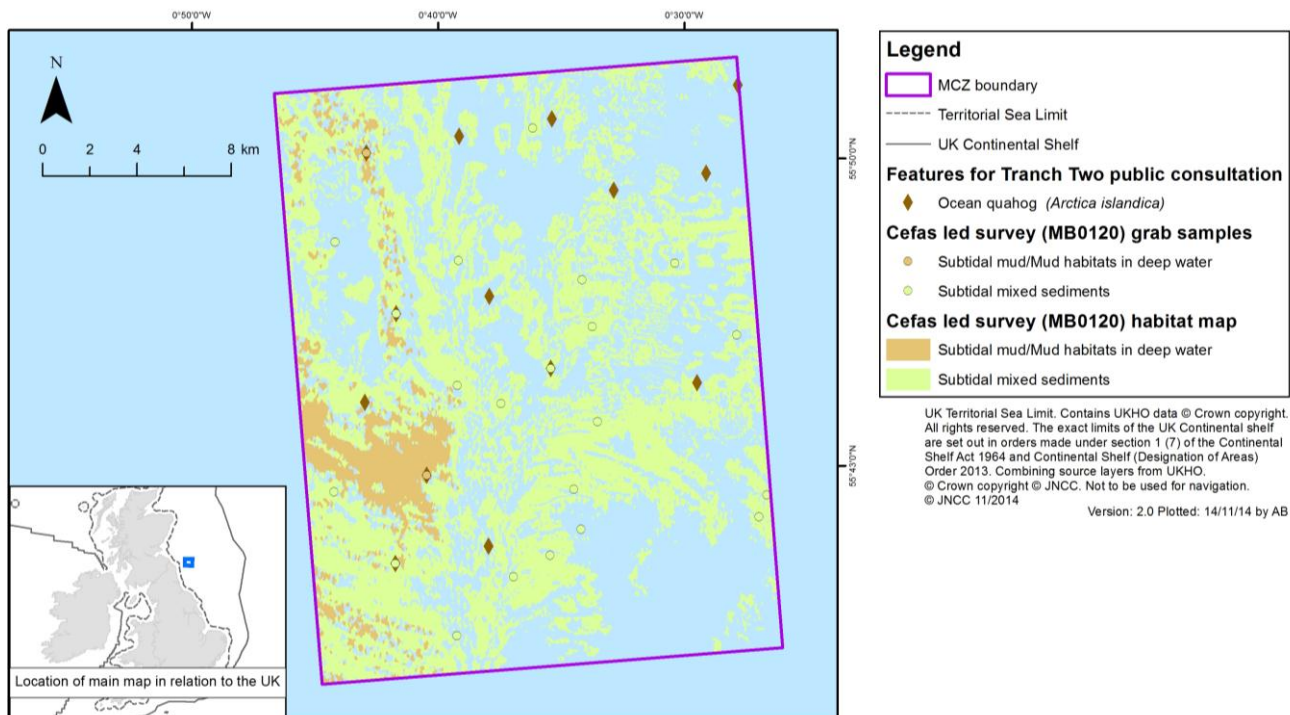
**Annex A – Additional features  
recommended for inclusion in first tranche  
MCZs**

North Sea .....	1
South East Waters.....	2
South West Waters.....	3
Irish Sea .....	10

## North Sea

*North East of Farnes Deep* - This offshore site is located in the North Sea and protects an area of 492 km<sup>2</sup>. The four additional features would be subtidal mud, mud habitats in deep water, subtidal mixed sediments and ocean quahog. There are no additional costs attributable to the inclusion of these features.

Feature	General management approach
Subtidal mud	Maintain at favourable condition
Subtidal mixed sediment	
Mud habitats in deep water	
Ocean quahog ( <i>Arctica islandica</i> )	

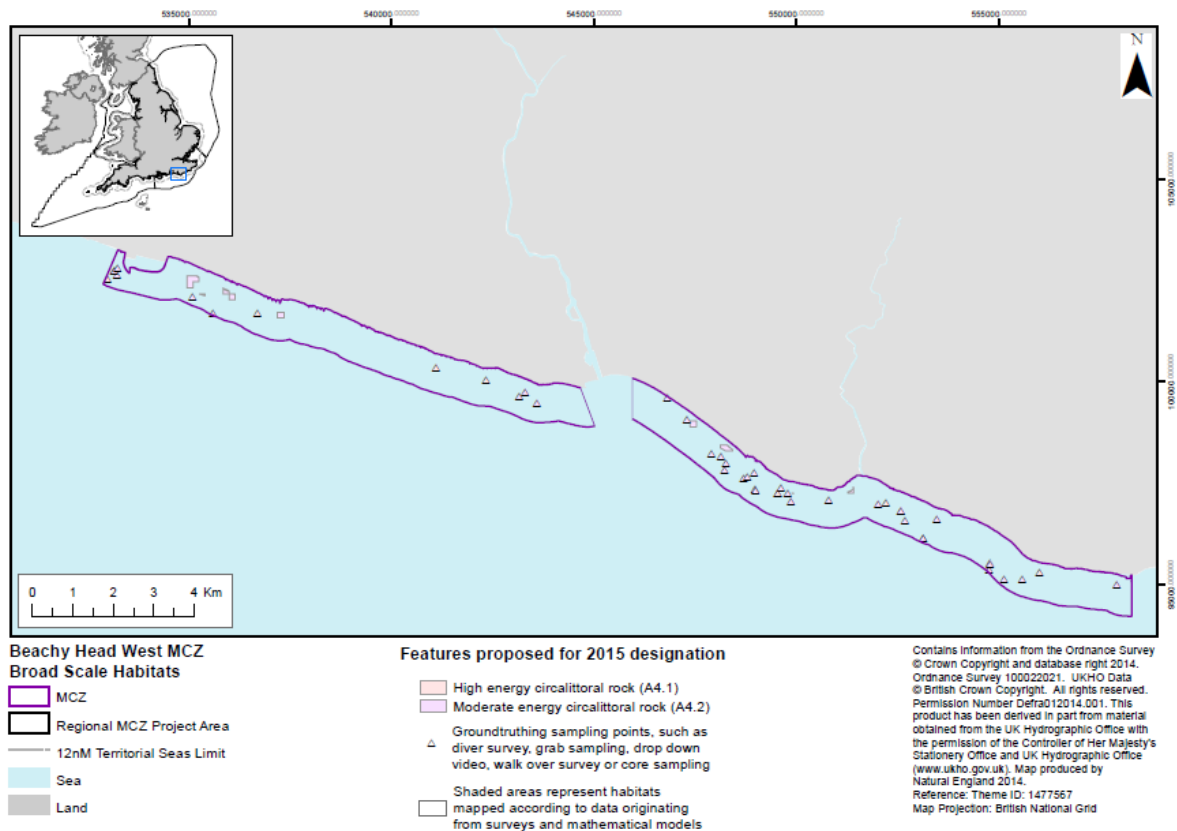


The ocean quahog samples were taken from the Cefas surveys in 1986 and 2012. The Cefas led survey grab samples were taken on the Cefas survey in 2012 and the habitat map was derived from analysis of the acoustic data and ground-truthing data collected on this survey. Further information on features already designated can be found at: <http://jncc.defra.gov.uk/page-6554>. More detailed advice available from the JNCC advice documents found here: <http://jncc.defra.gov.uk/page-6658>

## South East Waters

*Beachy Head West* - This inshore site runs parallel to the East Sussex coastline, from Brighton to the Beachy Head Cliffs, and protects an area of 24 km<sup>2</sup>. The two additional features would be moderate energy circalittoral rock and high energy circalittoral rock, in both halves of the site. There are no additional costs attributable to the inclusion of these features.

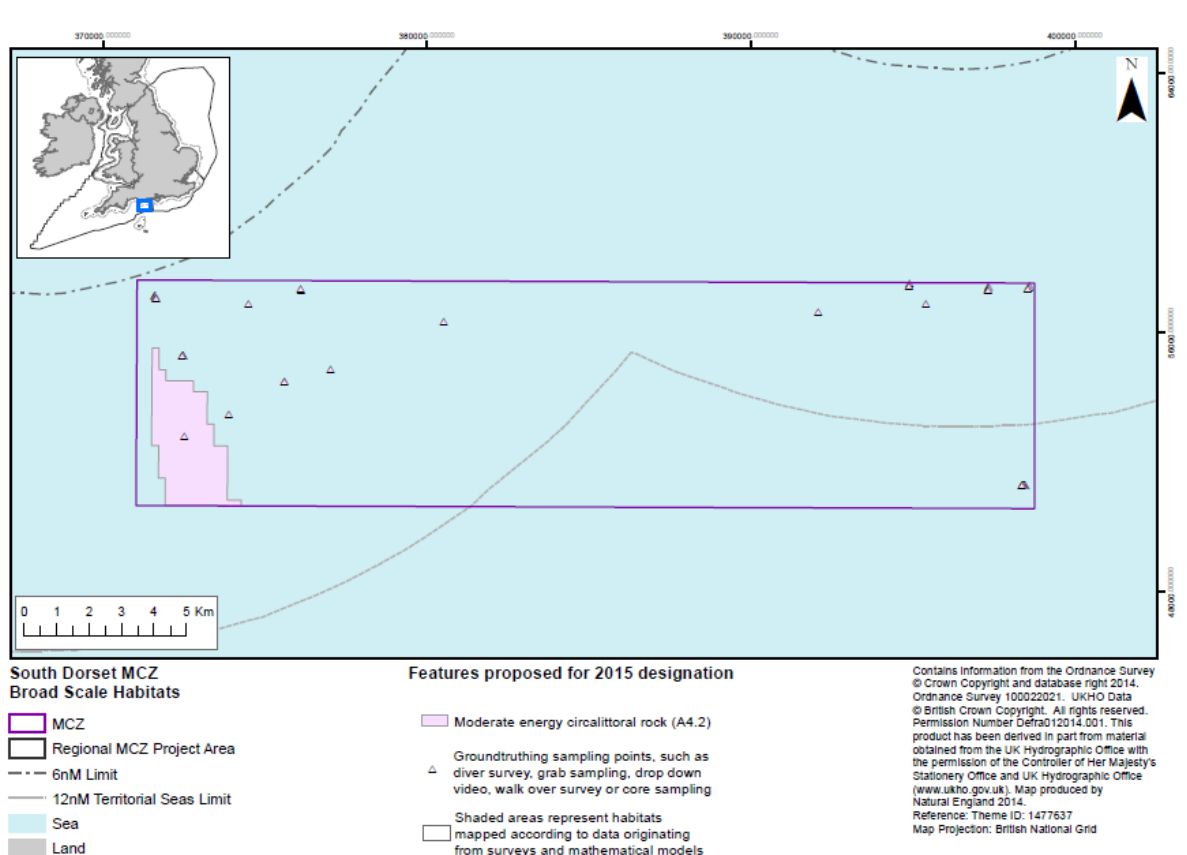
Feature	General management approach
High energy circalittoral rock	Recover to favourable condition
Moderate energy circalittoral rock	



## South West Waters

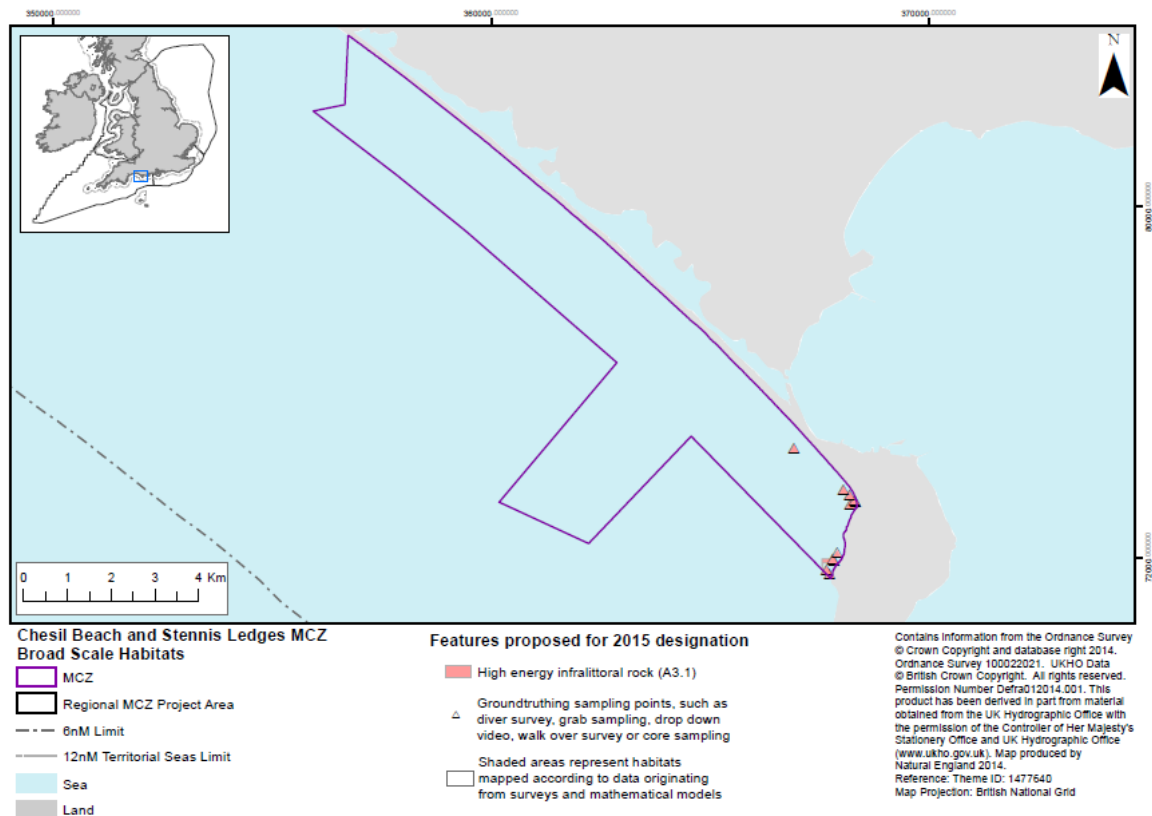
*South Dorset* - This inshore site is located off the south coast of Dorset, south-east of Swanage, and protects an area of 193 km<sup>2</sup>. The one additional feature would be moderate energy circalittoral rock. There are no additional costs attributable to the inclusion of this feature.

Feature	General management approach
Moderate energy circalittoral rock	Recover to favourable condition



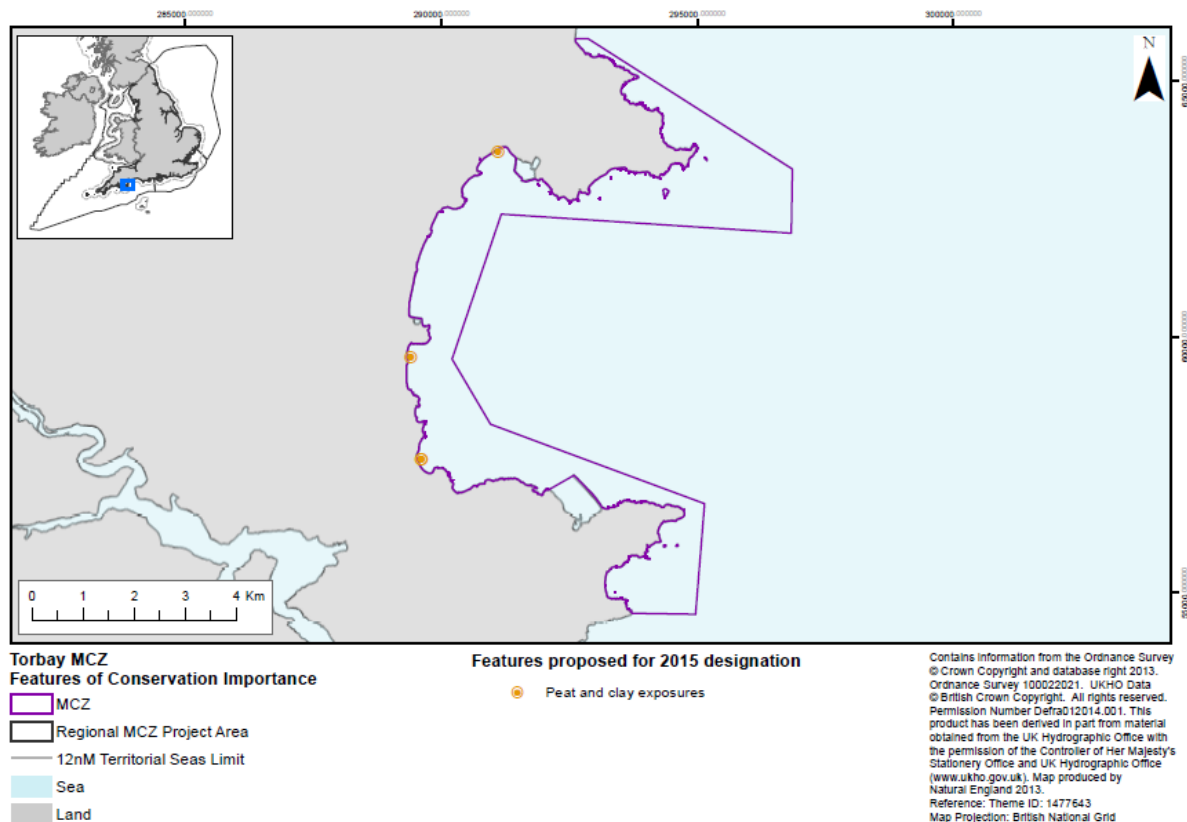
*Chesil Beach and Stennis Ledges* - This inshore site runs along the length of Chesil Beach to the Isle of Portland off the Dorset coast and protects an area of 37 km<sup>2</sup>. The one additional feature would be high energy infralittoral rock. There are no additional costs attributable to the inclusion of this feature.

Feature	General management approach
High energy infralittoral rock	Recover to favourable condition



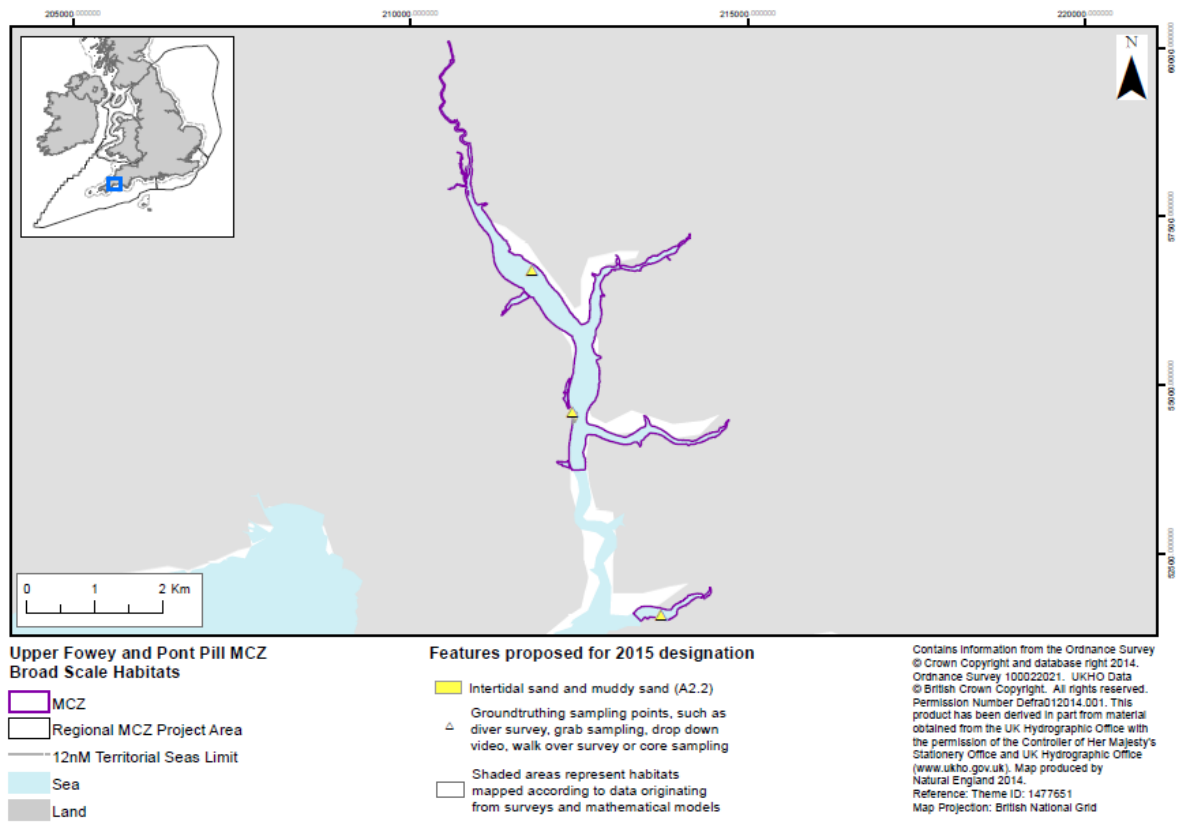
Torbay - This inshore site on the South Devon coast protects an area of 20 km<sup>2</sup>. The one additional feature would be peat and clay exposures. There are no significant additional costs attributable to the inclusion of this feature.

Feature	General management approach
Peat and clay exposures	Maintain at favourable condition



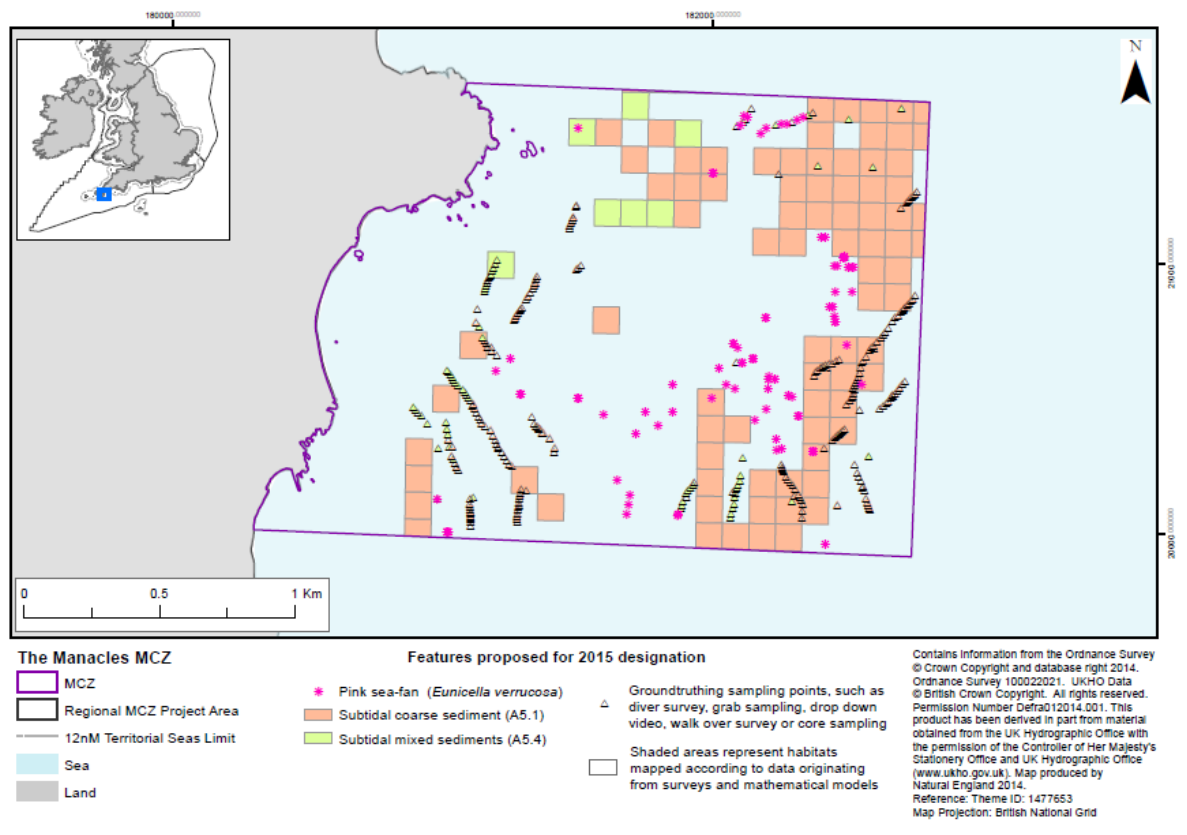
*Upper Fowey and Pont Pill* - This inshore site consists of two spatially separate estuary areas on the south coast of Cornwall and protects a total area of 2 km<sup>2</sup>. The one additional feature would be intertidal sand and muddy sand, in both sections of the site. There are no additional costs attributable to the inclusion of this feature.

Feature	General management approach
Intertidal sand and muddy sand	Maintain at favourable condition



*The Manacles* - This inshore site is located on the south coast of Cornwall and protects a total area of 3.5 km<sup>2</sup>. The three additional features would be subtidal coarse sediment, subtidal mixed sediment and pink sea-fan. There are no additional costs attributable to the inclusion of these features.

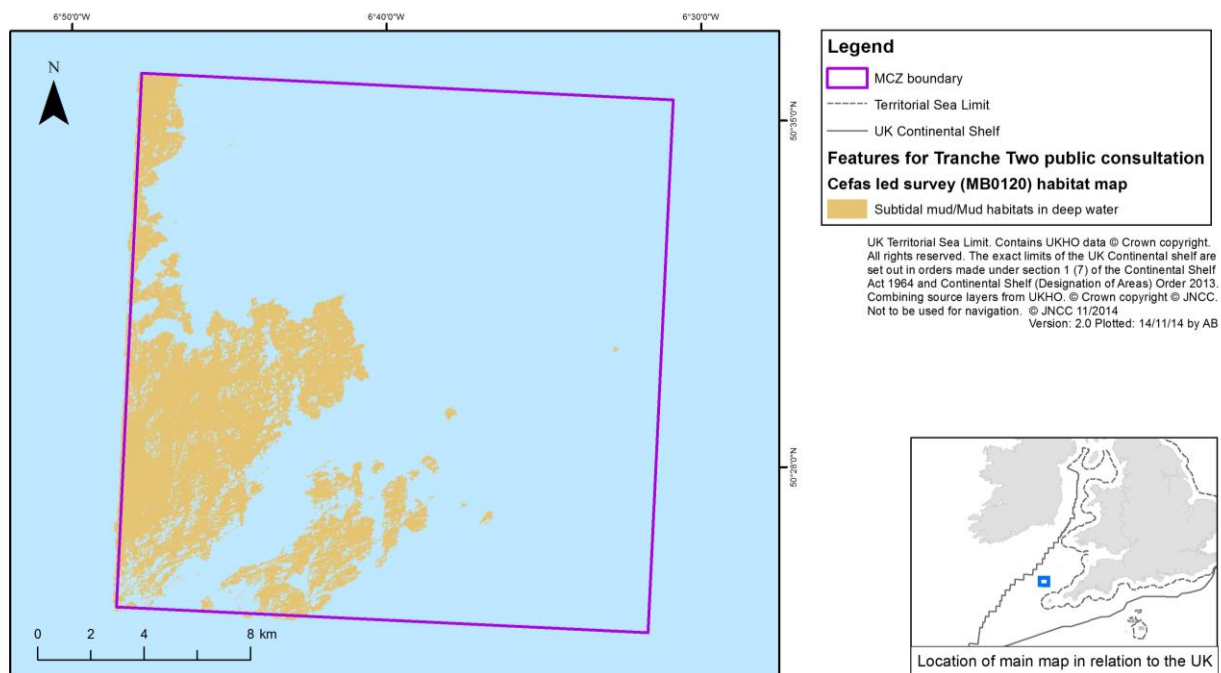
Feature	General management approach
Subtidal coarse sediment	Recover to favourable condition
Subtidal mixed sediment	
Pink sea-fan ( <i>Eunicella verrucosa</i> )	





*East of Haig Fras* - This is an offshore site located north west of Cornwall and protects an area of 400 km<sup>2</sup>. The two additional features would be subtidal mud and mud habitats in deep water. There are no additional costs attributable to the inclusion of these features.

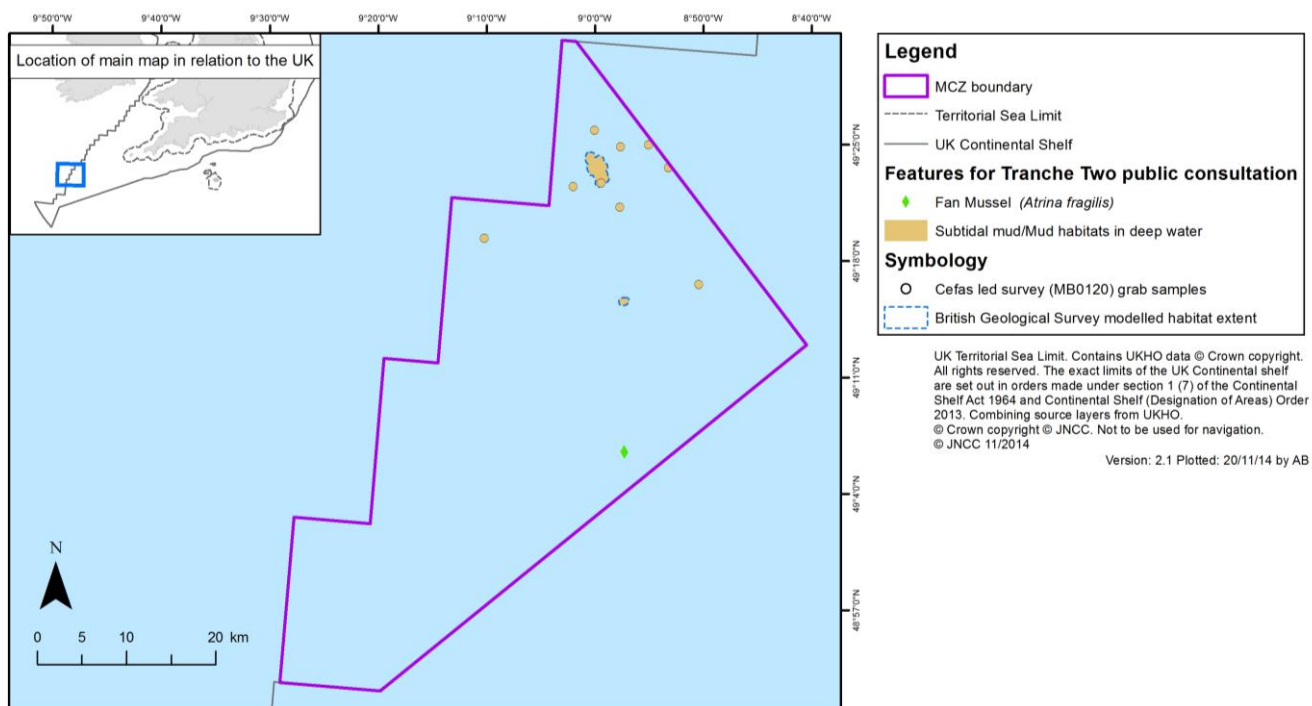
Feature	General management approach
Subtidal mud	Recover to favourable condition
Mud habitats in deep water	



The broad-scale habitat map was derived from an analysis of the acoustic data and ground-truthing data from the Cefas 2012 and 2013 surveys. Further information on features already designated can be found at: <http://jncc.defra.gov.uk/page-6554>. More detailed advice available from the JNCC advice documents found here: <http://jncc.defra.gov.uk/page-6658>

*South West Deeps (West)* - This large offshore site is located in the far western area of UK waters and protects an area of 1,824 km<sup>2</sup>. The three additional features would be subtidal mud, mud habitats in deep water and fan mussel. There are no additional costs attributable to the inclusion of these features.

Feature	General management approach
Subtidal mud	Recover to favourable condition
Mud habitats in deep water	
Fan mussel ( <i>Atrina fragilis</i> )	



Fan mussel samples and Cefas led survey grab samples were taken during the Cefas survey in 2013. The British Geological Survey modelled habitat extent was derived from an analysis of sediment sample data from the Cefas survey in 2013. At present, only a modelled habitat map exists for this site but following data collection in 2013, a new partial coverage habitat map will be available soon. The modelled habitat map has not been displayed as it only shows already designated features. Further information on features already designated can be found at: <http://jncc.defra.gov.uk/page-6554>. More detailed advice available from the JNCC advice documents found here: <http://jncc.defra.gov.uk/page-6658>

## Irish Sea

*Fylde* - This inshore site is located off the coast of North West England and protects an area of 260 km<sup>2</sup>. The one additional feature would be subtidal mud. There are no additional costs attributable to the inclusion of this feature.

Feature	General management approach
Subtidal mud	Maintain at favourable condition

