

Department for Environment, Food and Rural Affairs

Allonby Bay

Recommended Marine Conservation Zone

January 2015

Consultation on Sites Proposed for Designation in the Second Tranche of Marine Conservation Zones



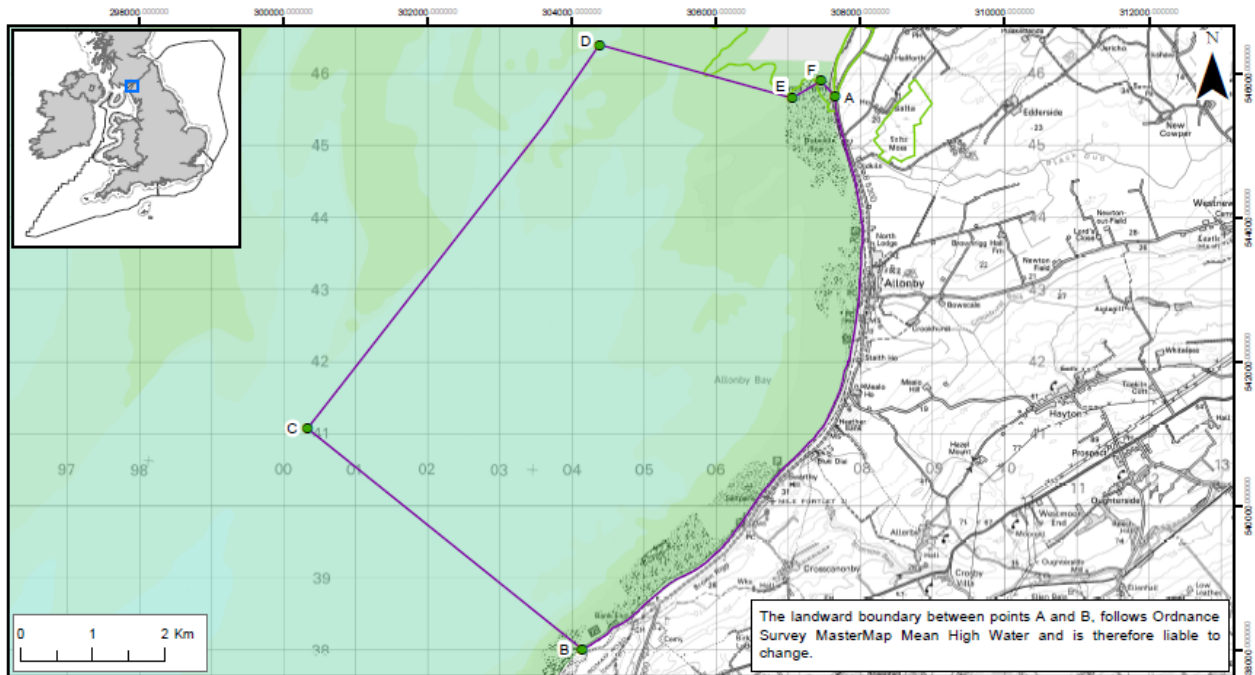
Contents

Where the site is located.....	3
How to comment on the consultation	3
Why the site is environmentally important.....	4
What this site would protect	4
Where the features are located.....	5
Features that are not proposed for designation	7
Activities that are likely to be affected	7
Ports, harbours and shipping	8
Archaeological heritage.....	8
Activities that are unlikely to be affected.....	8
Additional Information	9

Where the site is located

Allonby Bay recommended Marine Conservation Zone (rMCZ) is an inshore site that stretches for approximately 9 km along the coast on the English side of the Solway Firth. It extends from Dubmill Point in the north to just north of Maryport in the south.

The site extends from the intertidal zone to approximately 5.5 km off the coast to a depth of 6 metres. The total area of the site is approximately 40 km².



Allonby Bay rMCZ Boundary

- Recommended MCZ
- Regional MCZ project area
- MCZ boundary co-ordinates
- 12nM Territorial Seas Limit
- Land
- SSSIs

Point	Lat	Long
A	54° 47' 50.651" N	3° 26' 16.748" W
B	54° 43' 40.598" N	3° 29' 23.942" W
C	54° 45' 16.937" N	3° 33' 0.635" W
D	54° 48' 11.783" N	3° 29' 20.566" W
E	54° 47' 49.631" N	3° 26' 50.084" W
F	54° 47' 57.598" N	3° 26' 28.140" W

Depth Areas (metres)	
-20.0 - -10.0	25.1 - 50.0
-9.9 - -5.0	50.1 - 100.0
-4.9 - 0.0	100.1 - 250.0
0.1 - 5.0	250.1 - 500.0
5.1 - 10.0	500.1 - 1000.0
10.1 - 25.0	

Contains information from the Ordnance Survey © Crown Copyright and database right 2014. Ordnance Survey 100022021. UKHO Data © British Crown Copyright. All rights reserved. Permission Number Defra012014.001. This product has been derived in part from material obtained from the UK Hydrographic Office with the permission of the Controller of Her Majesty's Stationery Office and UK Hydrographic Office (www.ukho.gov.uk). NOT TO BE USED FOR NAVIGATION. Map produced by Natural England 2014. Reference: Theme ID: 1475909 Map Projection: British National Grid

How to comment on the consultation

You can comment on this proposal by responding to the [consultation](#) taking place between 30th January and 24th April 2015.

Why the site is environmentally important

This stretch of coast has been recommended as a rMCZ because of the diverse range of marine habitats and species it supports. In particular, there are large areas of nationally important living reefs, formed by the honeycomb worm and blue mussel beds.

The honeycomb worm reefs are formed from the closely-packed sand tubes constructed by these colonial worms. The reef structures resemble honeycomb and can extend for tens of metres across and up to a metre tall. They are able to support a wide range of shore-dwelling species including anemones, snails, shore crabs and seaweeds. The reefs need rock to build on as well as a steady supply of sand for tube building. The local conditions make this an ideal place for this species and Allonby Bay supports some of the best examples of these reefs in the UK.

The sandy beaches (intertidal sand and muddy sand) protected by this site may appear devoid of life, but in fact host a range of species, such as shrimp-like sandhoppers, cockles, sea nails and worms buried beneath the surface.

The peat exposures which are also a feature of this site provide a habitat which piddocks, a type of burrowing clam, and other species can tunnel into.

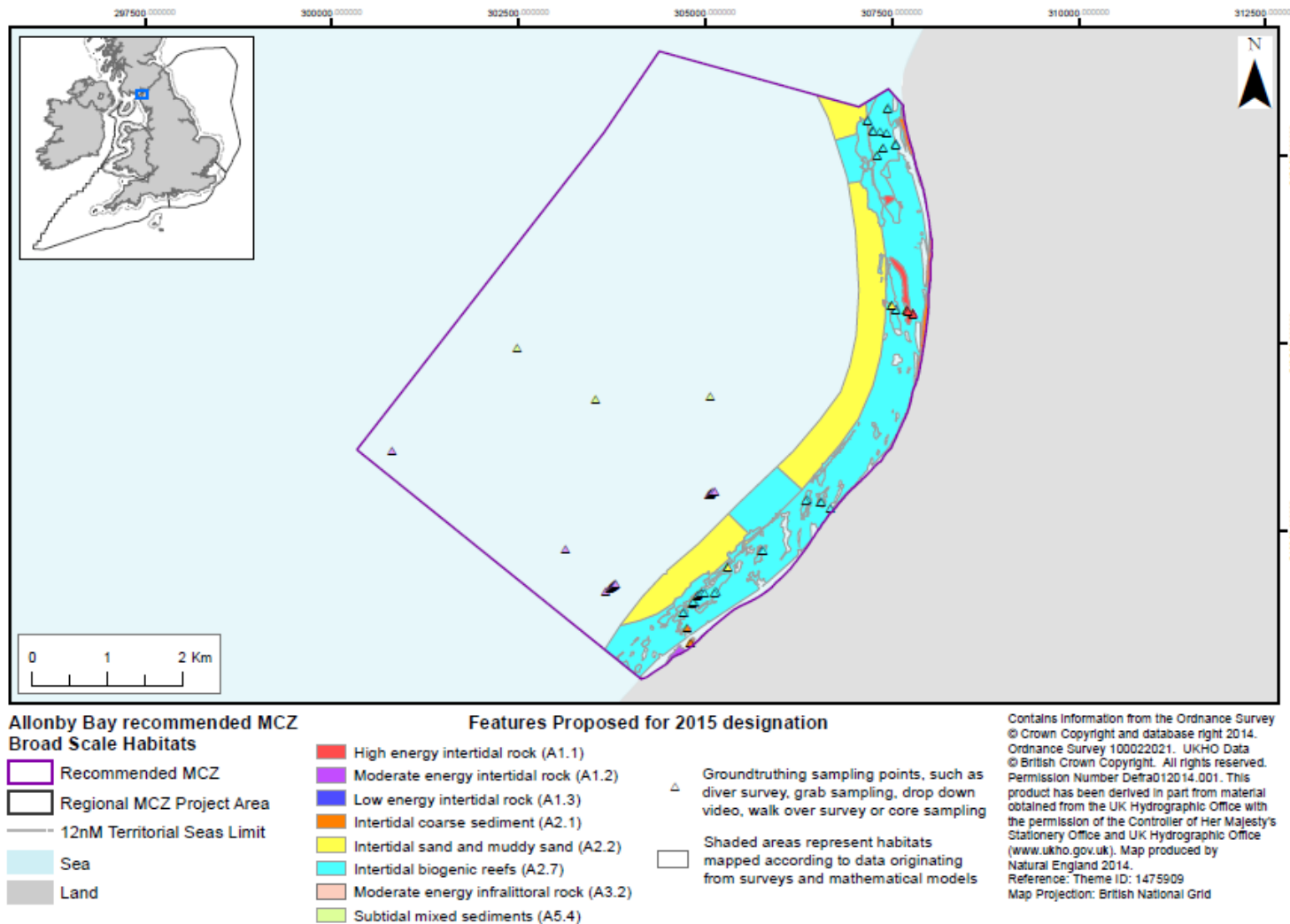
What this site would protect

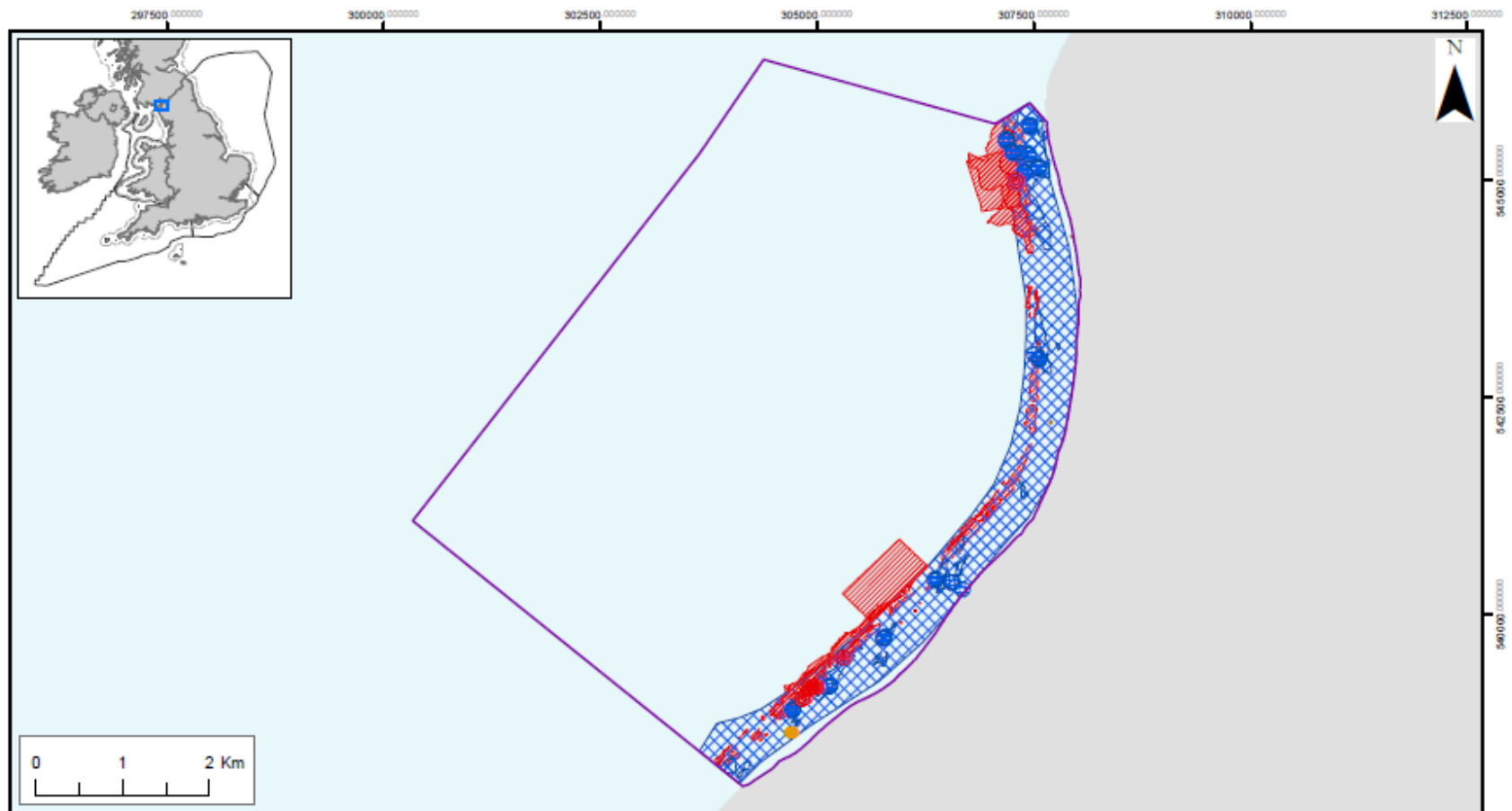
Designation would protect the following features. You can read more about the features this site protects and why they are important [here](#).

Feature	General management approach
High energy intertidal rock	Maintain at favourable condition
Moderate energy intertidal rock	
Low energy intertidal rock	
Intertidal biogenic reefs	
Intertidal coarse sediment	
Intertidal sand and muddy sand	
Moderate energy infralittoral rock	
Subtidal mixed sediments	
Blue mussel (<i>Mytilus edulis</i>) beds	
Peat and clay exposures	
Honeycomb worm (<i>Sabellaria alveolata</i>) reefs	

Where the features are located

The following maps show the location of the features to be protected. A range of different types of surveys have been used to create these maps. More detailed information on the techniques used and the features themselves can be found [here](#).









**Allonby Bay recommended MCZ
Features of Conservation Importance**

-  Recommended MCZ
-  Regional MCZ Project Area
-  12nM Territorial Seas Limit
-  Sea
-  Land

Features proposed for 2015 designation

-  Blue Mussel Beds
-  Honeycomb worn (*Sabellaria alveolata*) reefs
-  Peat and clay exposures
-  Blue Mussel Beds
-  Honeycomb worn (*Sabellaria alveolata*) reefs
-  Peat and clay exposures

Contains information from the Ordnance Survey
 © Crown Copyright and database right 2014.
 Ordnance Survey 100022021. UKHO Data
 © British Crown Copyright. All rights reserved.
 Permission Number Defra012014.001. This
 product has been derived in part from material
 obtained from the UK Hydrographic Office with
 the permission of the Controller of Her Majesty's
 Stationery Office and UK Hydrographic Office
 (www.ukho.gov.uk). Map produced by
 Natural England 2014.
 Reference: Theme ID: 1475909
 Map Projection: British National Grid

Features that are not proposed for designation

The following features are not proposed for designation as there is currently insufficient supporting evidence. Inclusion of these features may be considered if scientific evidence becomes available:

- subtidal coarse sediment,
- subtidal sand,
- subtidal biogenic reefs,
- high energy infralittoral rock,
- intertidal mixed sediments.

Activities that are likely to be affected

Management decisions are taken on a case by case basis by relevant regulators. Management will not automatically mean that economic and recreational activities will be restricted, decisions will be based on the specifics of each case. Restrictions on an activity will depend on the sensitivity of species, habitats and geological/geomorphological features (for which a site is designated) to the activities taking place in that area. More detail is available in the [Impact Assessment](#).

Sectors or activities likely affected by designation		
Sector	Activity Affected	Best Cost Estimate (£) per year
Ports, harbours & shipping	Dredge disposal sites	900
Archaeological heritage	Future investigations of site	Unquantified
Best estimate total cost		900

Ports, harbours and shipping

This site is located close to Maryport. All future licence applications made in relation to port, harbour and commercial shipping activities will need to consider the possible effects of their activities on the features designated within the site.

Environmental Impact Assessments (EIAs) for future licence applications to use the disposal site within 5 km of boundary of this site is likely to incur additional costs.

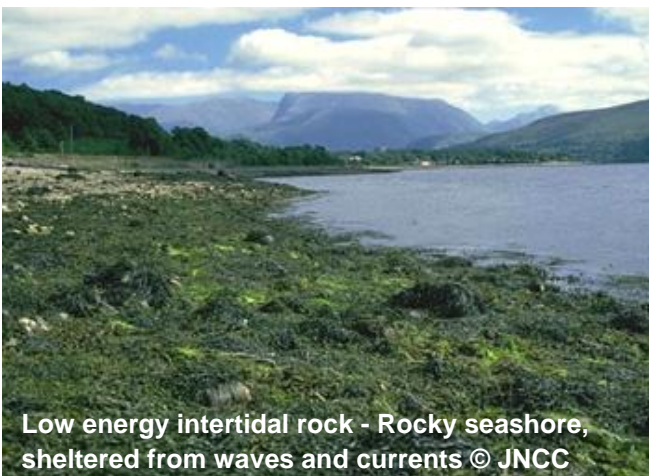
Archaeological heritage

A Bronze Age spearhead was found in the site and there is a possibility of three Roman towers and a Roman mile fort being located there. World War II military aircraft wrecks are also recorded. There is likely to be an increase in the cost for carrying out EIAs for future licence applications. Following designation, these will need to consider the effect of the activity on the features designated at this site.

Activities that are unlikely to be affected

These activities are known to take place at this site but are not likely to be damaging to the features proposed for designation at their current levels of intensity:

- commercial fisheries - all gear types,
- coastal defence,
- recreational activities,
- aquaculture,
- navigation buoys,
- transit of ships.



Additional Information

To read the full consultation document, or respond to the consultation, please visit

<https://consult.defra.gov.uk/marine/tranche2mczs>

To read the advice provided by Natural England, please visit

<http://publications.naturalengland.org.uk/publication/5803843768025088?category=6742552893980672>

For further information, please contact Defra on

- 03459 33 55 77 (UK only)
- +44 20 7238 6951 (from outside the UK)
- defra.helpline@defra.gsi.gov.uk



© Crown copyright 2015

You may re-use this information (excluding logos) free of charge in any format or medium, under the terms of the Open Government Licence v.3. To view this licence visit www.nationalarchives.gov.uk/doc/open-government-licence/version/3/ or email PSI@nationalarchives.gsi.gov.uk

This publication is available at www.gov.uk/government/publications

Any enquiries regarding this publication should be sent to us at

mcz@defra.gsi.gov.uk

PB 14290