

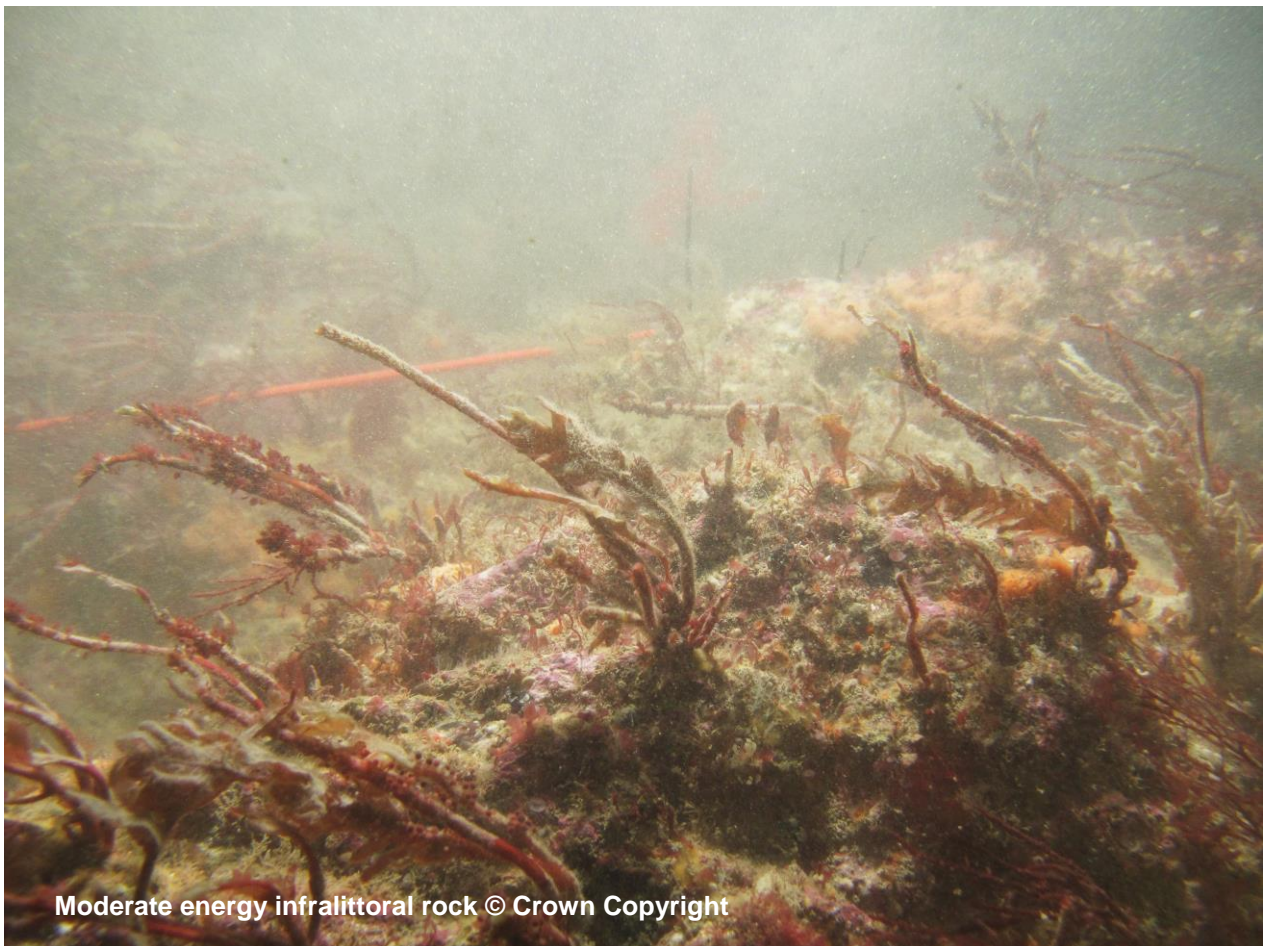
Department for Environment, Food and Rural Affairs

Selsey Bill and the Hounds

Recommended Marine Conservation Zone

June 2018

Consultation on Sites Proposed for Designation in the Third Tranche of Marine Conservation Zones



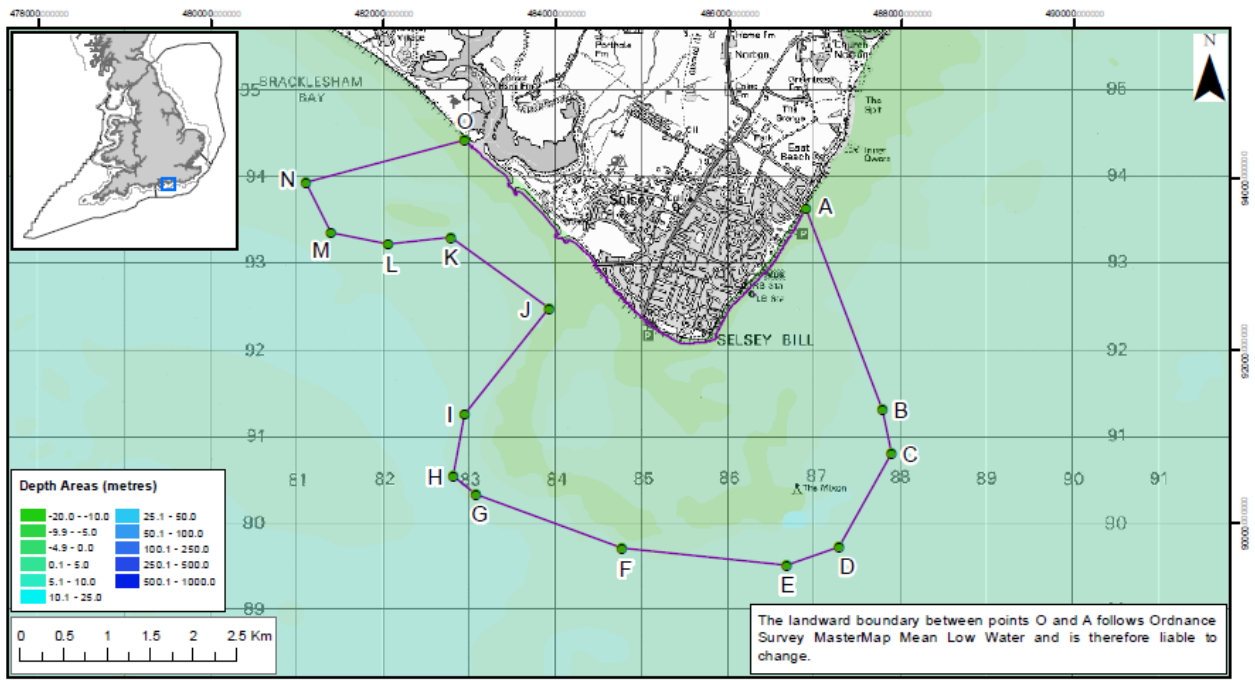
Moderate energy infralittoral rock © Crown Copyright

Contents

Where is the site located?.....	3
Why is the site environmentally important?.....	4
What would this site protect?	4
Where are the features located?.....	6
Which activities are likely to be affected?	8
Which activities are not likely to be affected?	9
Additional Information	9

Where is the site located?

Selsey Bill and the Hounds recommended Marine Conservation Zone (MCZ) is an inshore site that covers an area of approximately 16 km². It is located in the English Channel on the south coast of England. The site boundaries have been slightly modified from the regional project proposal after consultation with stakeholders. The proposed extension is to include the short-snouted seahorse feature. The boundary has also been moved from mean high water to mean low water to avoid the double designation of the landward aspect of the Bracklesham Bay Site of Special Scientific Interest. This will adjoin the Selsey Bill and the Hounds MCZ.



Selsey Bill and the Hounds rMCZ Boundary

- Recommended MCZ
- Regional MCZ project area
- rMCZ boundary co-ordinates
- 12nM Territorial Seas Limit
- Land

Point	Lat	Long	Point	Lat	Long
A	50° 44' 9.321" N	0° 46' 12.283" W	I	50° 42' 54.145" N	0° 49' 35.691" W
B	50° 42' 53.121" N	0° 45' 29.012" W	J	50° 43' 33.547" N	0° 48' 44.922" W
C	50° 42' 37.111" N	0° 45' 23.401" W	K	50° 44' 0.491" N	0° 49' 42.549" W
D	50° 42' 2.270" N	0° 45' 55.797" W	L	50° 43' 58.558" N	0° 50' 19.171" W
E	50° 41' 55.400" N	0° 46' 28.801" W	M	50° 44' 3.203" N	0° 50' 53.283" W
F	50° 42' 2.854" N	0° 48' 4.116" W	N	50° 44' 22.247" N	0° 51' 7.166" W
G	50° 42' 24.024" N	0° 49' 29.523" W	O	50° 44' 38.850" N	0° 49' 32.878" W
H	50° 42' 31.101" N	0° 49' 42.973" W			

Contains information from the Ordnance Survey © Crown Copyright and database right 2016. Ordnance Survey 100022021. UKHO Data © British Crown Copyright. All rights reserved. Permission Number Defra012016.001. This product has been derived in part from material obtained from the UK Hydrographic Office with the permission of the Controller of Her Majesty's Stationery Office and UK Hydrographic Office (www.ukho.gov.uk). NOT TO BE USED FOR NAVIGATION. Map produced by Natural England 2016. Reference: Theme ID: 1477576. Map Projection: British National Grid

Why is the site environmentally important?

Selsey Bill and the Hounds is well known for its high biodiversity and species richness, supported by a variety of different habitats ranging from rocky habitats to soft sandy sediments. This site makes a significant contribution towards achieving the network targets for several subtidal sediment features. It also provides additional protection for a series of geological interest features that are exposed on, and underlie, the foreshore within Bracklesham Bay.

The site supports one of the best examples of peat and clay exposures on the southeast coast. Within the southeast of the site is the Mixon Hole, a dramatic 20m drop in the seafloor exposing clay cliffs capped with limestone. This feature supports a rich diversity of habitats and species and has been designated as a marine Site of Nature Conservation Importance by West Sussex County Council.



The rock features, known locally as “The Hounds” are also proposed for designation. These consist of outcrops of limestone and clay exposures and are representative of a coherent rock system stretching across the MCZ from the northwest corner to the southeast. These rock features provide a range of habitats for a variety of species such as anemones, sponges, sea squirts and algae and also act as biodiversity hotspots for fish and crustaceans.

The site would also protect the short-snouted seahorse (*Hippocampus hippocampus*), which are found in seagrass beds and seaweeds.

What would this site protect?

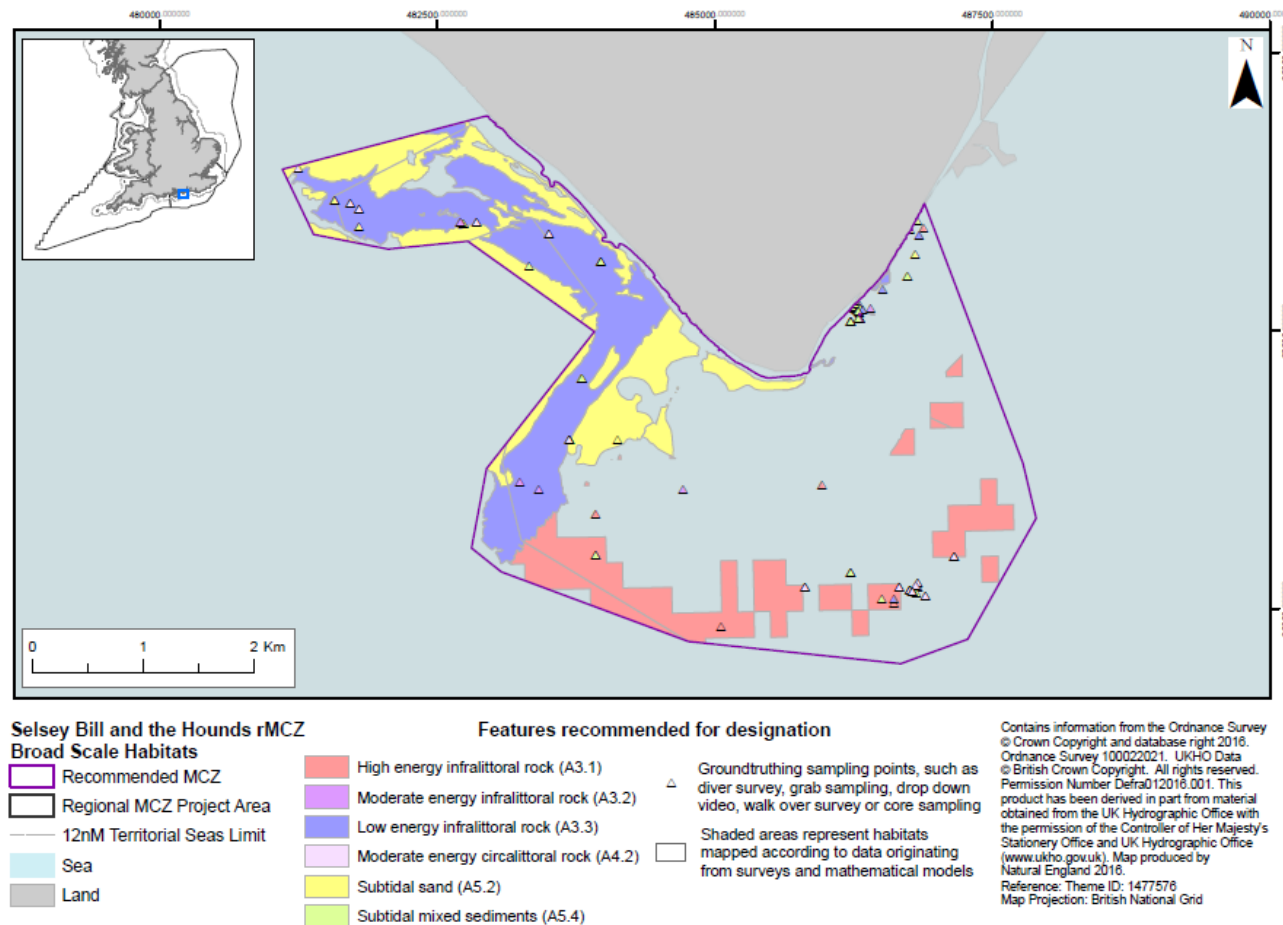
Designation would protect the following features. You can read more about the features this site protects and why they are important [here](#).

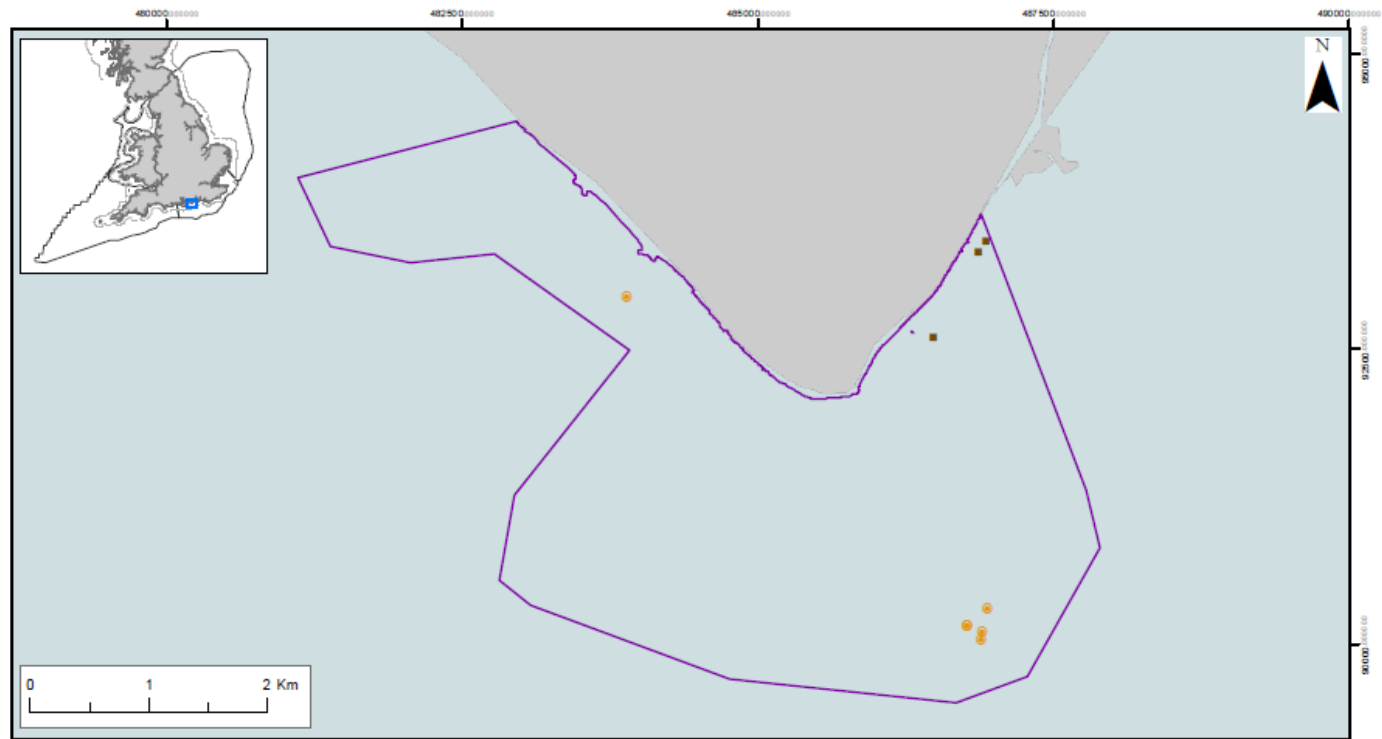
Feature	General management approach
Bracklesham Bay geological feature	Maintain in favourable condition
Short-snouted seahorse (<i>Hippocampus hippocampus</i>)	
Subtidal mixed sediments	
Subtidal sand	

Peat and clay exposures	Recover to favourable condition
High energy infralittoral rock	
Moderate energy infralittoral rock	
Moderate energy circalittoral rock	
Low energy infralittoral rock	

Where are the features located?

The following maps show the location of the features to be protected within the site. A range of different types of surveys have been used to create these maps. More detailed information on the techniques used can be found [here](#).





**Selsey Bill and the Hounds rMCZ
Features of Conservation Importance**

- Recommended MCZ
- Regional MCZ Project Area
- 12nM Territorial Seas Limit
- Sea
- Land

Features recommended for designation

- Short snouted seahorse (*Hippocampus hippocampus*)
- Peat and clay exposures

Contains information from the Ordnance Survey
 © Crown Copyright and database right 2016,
 Ordnance Survey 100022021. UKHO Data
 © British Crown Copyright. All rights reserved.
 Permission Number DefraD12016.001. This
 product has been derived in part from material
 obtained from the UK Hydrographic Office with
 the permission of the Controller of Her Majesty's
 Stationery Office and UK Hydrographic Office
 (www.ukho.gov.uk). Map produced by
 Natural England 2016.
 Reference: Theme ID: 1477576
 Map Projection: British National Grid

Which activities are likely to be affected?

Management decisions are taken on a case by case basis by relevant regulators. If an activity is identified as requiring management this does not necessarily mean that it will need to be significantly restricted. Decisions will be based on the specifics of each case and any restrictions will depend on the sensitivity of the species, habitats or geological/geomorphological features to be protected to the activity taking place. More detail is available in the Impact Assessment.

Sectors and activities likely to be affected by designation		
Sector	Activity Affected	Best Cost Estimate (£) per year (rounded to nearest £100)
Commercial Fishing UK	Bottom trawls	£700
Renewable energy - wave & tidal	Environmental Impact Assessments	£300
Best estimate total cost		£1,000

Commercial Fishing UK

The following gears are known to be used within the site:

- Bottom trawls.

The local fishing fleet consists mainly of boats under 10 m. For these we have less data on their fishing activities compared to over 10 m boats, which use the Vessel Monitoring System. Fishing activity within the site is thought to be low but we would welcome any new data available to help quantify this.

Renewable energy - wave and tidal

This site overlaps with potential future developments that generate electricity using the tidal and wave energy resource in the area. Future developments (including cables) that overlap with or are within 1 km of an MCZ will incur an additional environmental impact assessment cost.

Which activities are not likely to be affected?

These activities are known to take place at this site but at their current levels of intensity the best available evidence indicates they are not likely to be damaging the features to be protected:

- Archaeological heritage
- Coastal development and flood and erosion risk management schemes
- Coastal infrastructure
- Ports and harbours
- Recreation

Additional Information

To read the advice provided by Natural England, please visit

<http://publications.naturalengland.org.uk/publication/6079955233931264>

To read the advice provided by the Joint Nature Conservation Committee, please visit

<http://jncc.defra.gov.uk/page-7119>

For further information, please contact Defra on

- 03459 33 55 77 (UK only)
- +44 20 7238 6951 (from outside the UK)
- defra.help@defra.gsi.gov.uk



© Crown copyright 2018

You may re-use this information (excluding logos) free of charge in any format or medium, under the terms of the Open Government Licence v.3. To view this licence visit www.nationalarchives.gov.uk/doc/open-government-licence/version/3/ or email PSI@nationalarchives.gsi.gov.uk

This publication is available at www.gov.uk/government/publications