

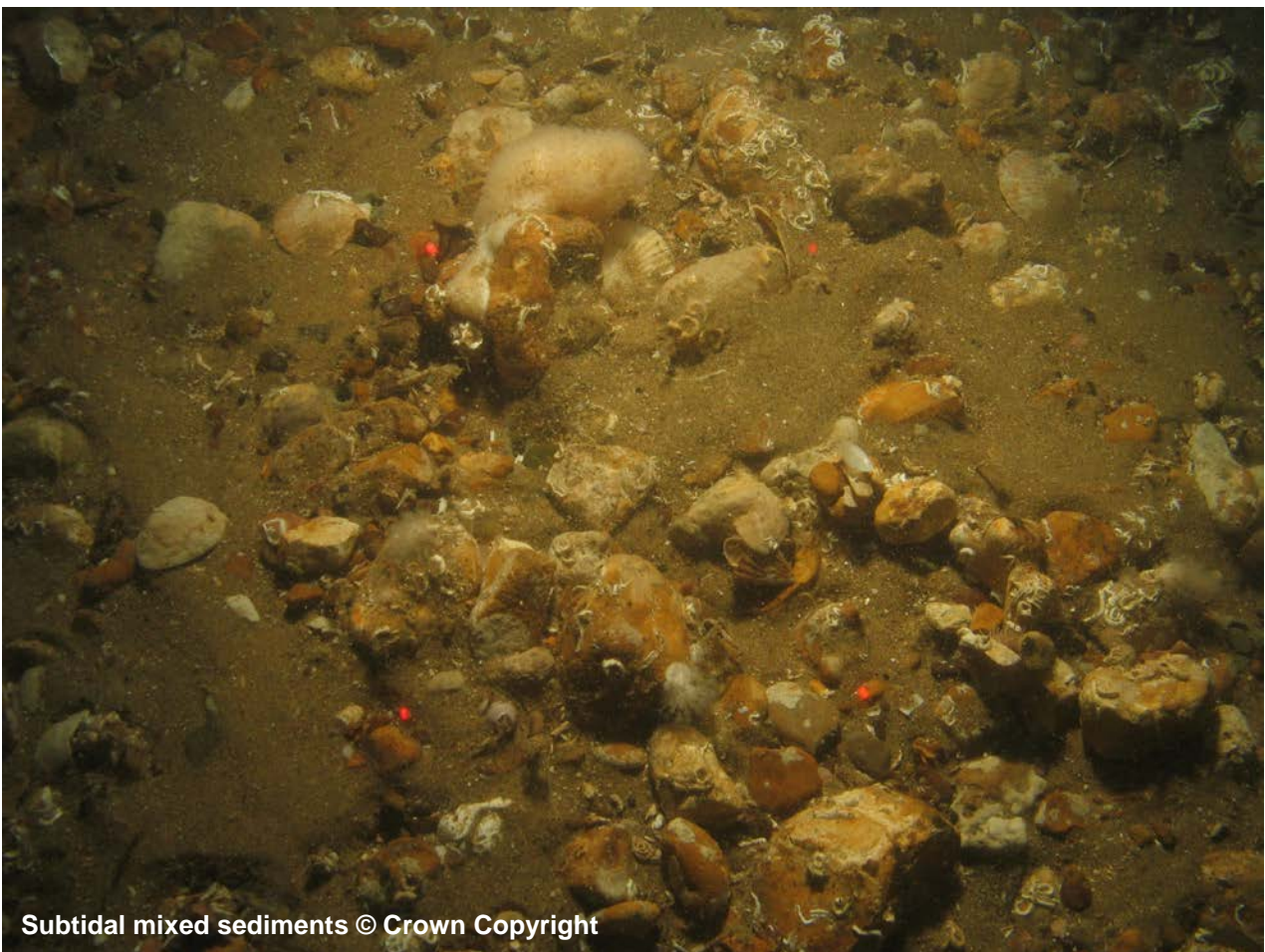
Department for Environment, Food and Rural Affairs

## Orford Inshore

### Recommended Marine Conservation Zone

June 2018

Consultation on Sites Proposed for Designation in the Third Tranche of Marine Conservation Zones

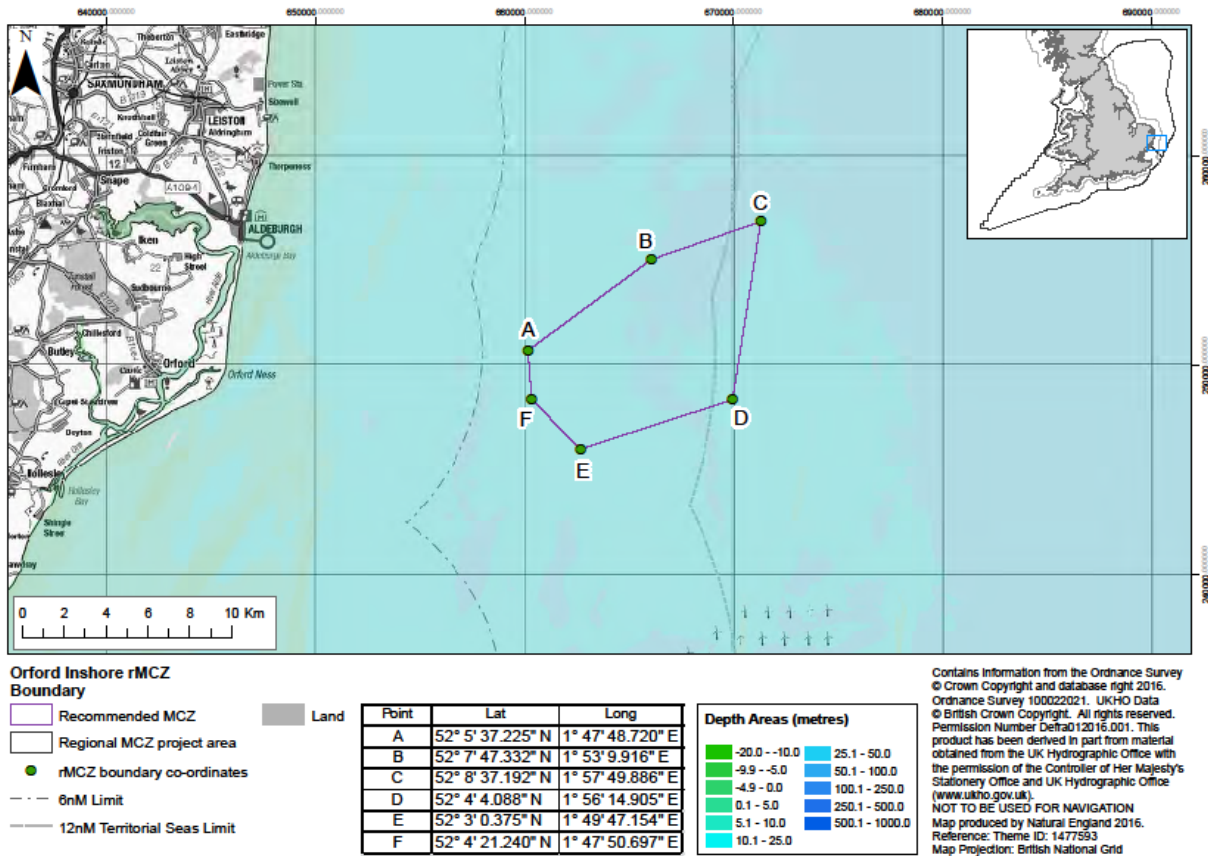


## Contents

Where is the site located?.....	1
Why is the site environmentally important?.....	1
What would this site protect? .....	2
Where are the features located?.....	3
Which activities are likely to be affected? .....	4
Which activities are not likely to be affected? .....	5
Additional information .....	5

# Where is the site located?

Orford Inshore recommended Marine Conservation Zone (MCZ) is an inshore site that covers an area of approximately 72 km<sup>2</sup>. The site is located off the Suffolk coast in the Southern North Sea approximately 14 km offshore from the Alde Ore Estuary.



# Why is the site environmentally important?

The Orford Inshore MCZ site is dominated by habitats composed of subtidal mixed sediments. These sandy, gravelly sediments are important as nursery and spawning grounds for many fish species including Dover sole, lemon sole and sand eels. Colourful species of burrowing anemones can be found within the sediment, alongside sea cucumbers, urchins and starfish.



Several nationally important shark species are found within the site, including the small-spotted catshark. The area is also important for foraging seabirds and harbour porpoise are often spotted passing through.

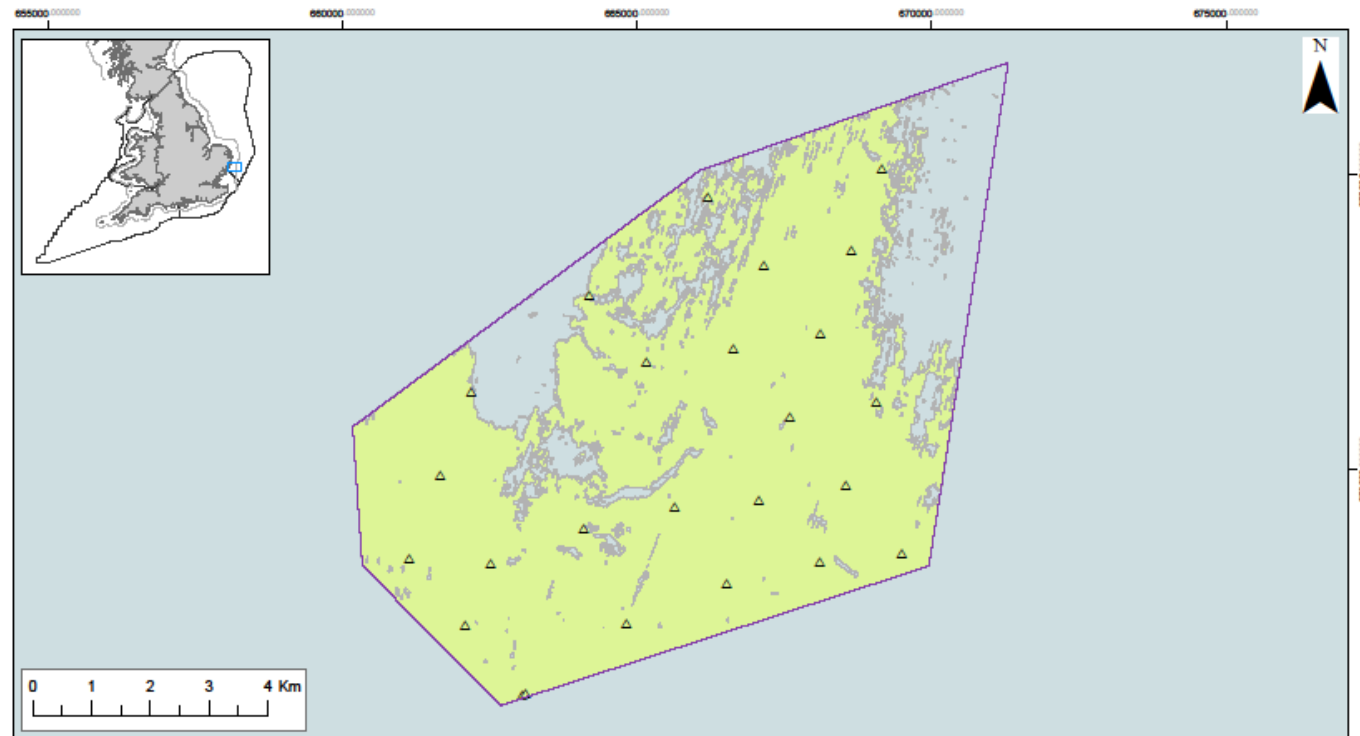
# What would this site protect?

Designation would protect the following feature. You can read more about the feature this site protects and why it is important [here](#).

Feature	General Management Approach
Subtidal mixed sediments	Recover to favourable condition

# Where are the features located?

The following map shows the location of the feature to be protected within the site. A range of different survey types have been used to create site maps. More detailed information on the techniques used can be found [here](#).



**Orford Inshore rMCZ  
Broad Scale Habitats**

- Recommended MCZ
- Regional MCZ Project Area
- 12nM Territorial Seas Limit
- Sea
- Land

### Features recommended for designation

- Subtidal mixed sediments (A5.4)
- Groundtruthing sampling points, such as diver survey, grab sampling, drop down video, walk over survey or core sampling
- Shaded areas represent habitats mapped according to data originating from surveys and mathematical models

Contains information from the Ordnance Survey © Crown Copyright and database right 2016. Ordnance Survey 100022021. UKHO Data © British Crown Copyright. All rights reserved. Permission Number Defra012016.001. This product has been derived in part from material obtained from the UK Hydrographic Office with the permission of the Controller of Her Majesty's Stationery Office and UK Hydrographic Office (www.ukho.gov.uk). Map produced by Natural England 2016. Reference: Theme ID: 1477593 Map Projection: British National Grid

## Which activities are likely to be affected?

Management decisions are taken on a case by case basis by relevant regulators. If an activity is identified as requiring management this does not necessarily mean that it will need to be significantly restricted. Decisions will be based on the specifics of each case and any restrictions will depend on the sensitivity of the species, habitats or geological/geomorphological features to be protected to the activity taking place. More detail is available in the Impact Assessment.

Sectors and activities likely to be affected by designation		
Sector	Activity Affected	Best Cost Estimate (£) per year (rounded to nearest £100)
Commercial Fishing UK	Bottom trawling	£200
Commercial Fishing non-UK	Bottom trawling	Unquantified
Aggregate extraction	Environmental impact assessments	£4,300
Ports and Harbours	Environmental impact assessments	£300
<b>Best estimate total cost</b>		<b>£4,800</b>

### Commercial Fishing UK

The site is currently fished by vessels from a number of UK ports. The following gear types are known to be used within the site:

- Bottom trawls
- Static gear, including lines, pots and nets

Species caught include whelks, sole, cod, scallops and herring.

The activities that are likely to be affected by designation are shown in the table.

### Commercial Fishing (non-UK)

Vessels from France, Belgium, The Netherlands and Germany fish at a relatively low level within the site, primarily using bottom trawling gear.

Although impacts outside the UK are not quantified as part of the impact assessment, the implications of designation on non-UK commercial fishing vessels are considered in deciding which sites to designate. The activities that are likely to be affected by designation are shown in the table above.

## Aggregate extraction

The MCZ is within 1 km of a current aggregate extraction site with another potential area approximately 100 m outside of the boundary. Any new licence applications for the extraction of aggregates from these areas will require a more comprehensive Environmental Impact Assessment to consider the effect of the activity on the designated features.

## Ports and Harbours

A disposal site for the Galloper wind farm is located within 5 km of the proposed site. Environmental Impact Assessments for future licence applications to use the disposal site more widely are likely to incur additional costs.

## Which activities are not likely to be affected?

These activities are known to take place at this site but at their current levels of intensity the best available evidence indicates they are not likely to be damaging the features to be protected:

- Cables - power and telecommunication cables currently intersect the site
- Commercial shipping

## Additional information

To read the advice provided by Natural England, please visit

<http://publications.naturalengland.org.uk/publication/6079955233931264>

To read the advice provided by the Joint Nature Conservation Committee, please visit

<http://jncc.defra.gov.uk/page-7119>

For further information, please contact Defra on

- 03459 33 55 77 (UK only)
- +44 20 7238 6951 (from outside the UK)
- [defra.helpline@defra.gsi.gov.uk](mailto:defra.helpline@defra.gsi.gov.uk)



© Crown copyright 2018

You may re-use this information (excluding logos) free of charge in any format or medium, under the terms of the Open Government Licence v.3. To view this licence visit [www.nationalarchives.gov.uk/doc/open-government-licence/version/3/](http://www.nationalarchives.gov.uk/doc/open-government-licence/version/3/) or email [PSI@nationalarchives.gsi.gov.uk](mailto:PSI@nationalarchives.gsi.gov.uk)

This publication is available at [www.gov.uk/government/publications](http://www.gov.uk/government/publications)