

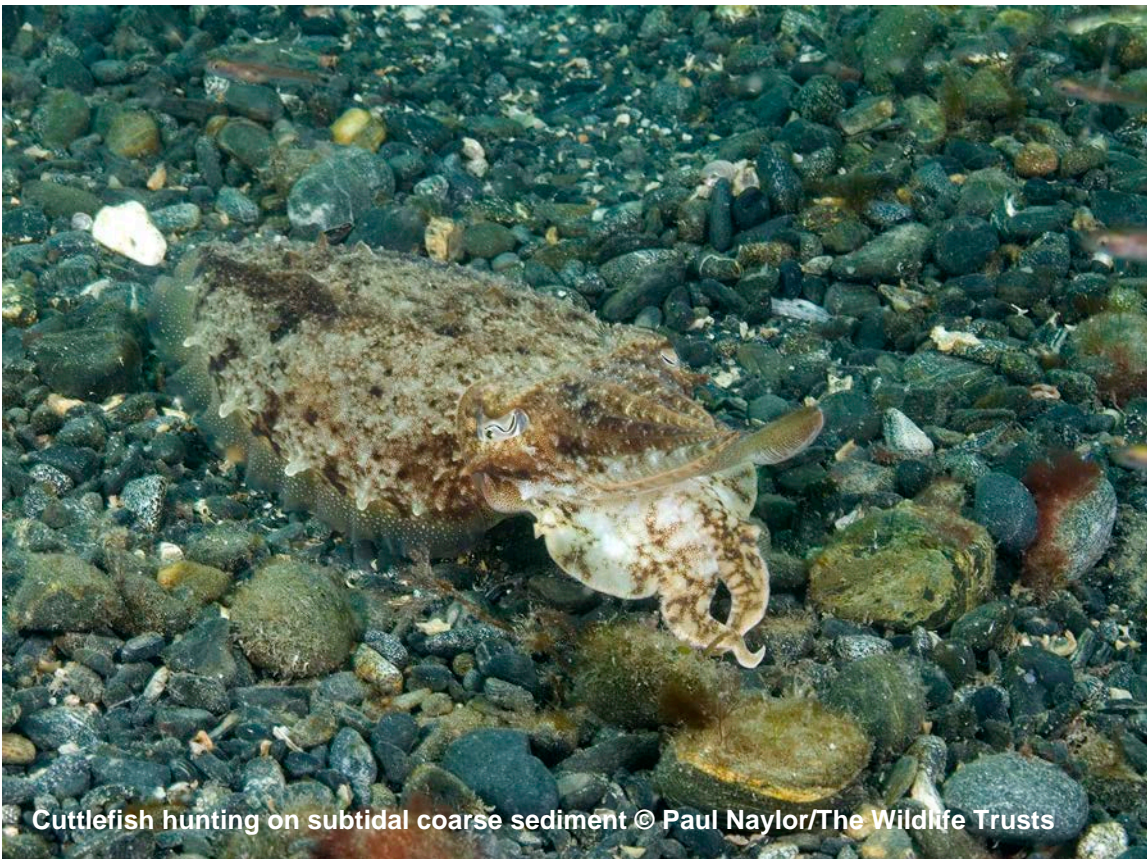
Department for Environment, Food and Rural Affairs

Inner Bank

Recommended Marine Conservation Zone

June 2018

Consultation on Sites Proposed for Designation in the Third Tranche of Marine Conservation Zones



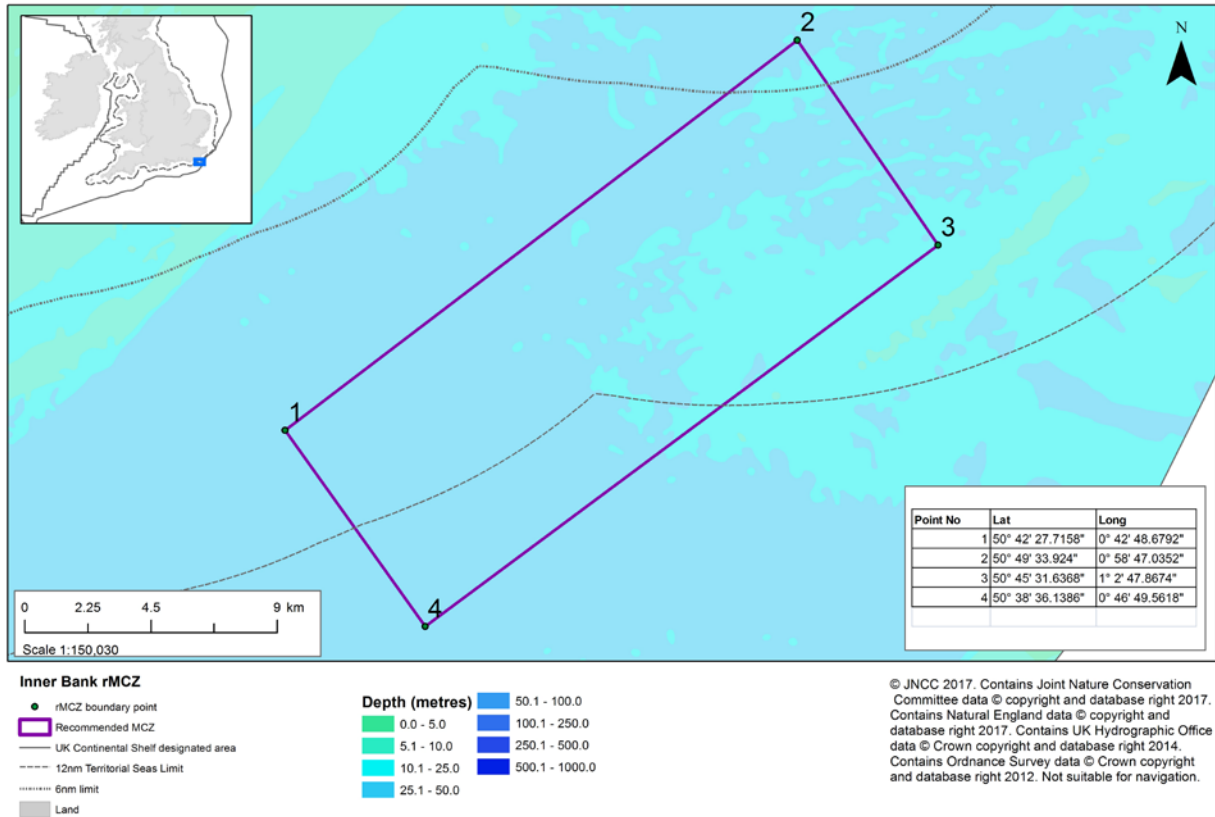
Cuttlefish hunting on subtidal coarse sediment © Paul Naylor/The Wildlife Trusts

Contents

Where is the site located?.....	3
Why is the site environmentally important?.....	3
What would this site protect?	4
Where are the features located?.....	5
Which activities are likely to be affected?	6
Which activities are not likely to be affected?	7
Additional Information	7

Where is the site located?

The Inner Bank recommended Marine Conservation Zone (MCZ) covers an area of approximately 199 km² and is located off the south coast. It lies within both inshore and offshore waters. The northern corner of the site is approximately 10 km south of Dungeness, extending south west to waters south of Hastings in the English Channel.



Why is the site environmentally important?

The Inner Bank MCZ contains a variety of subtidal sediments ranging from fine sands to coarser sediments. The diverse nature of this range of habitats supports a variety of species, including several different types of polychaetes, alongside bivalves, anemones, sea cucumbers, starfish, urchins, sea firs and sea mats.



Great scallop on subtidal mixed sediment © Paul Naylor/The Wildlife Trusts

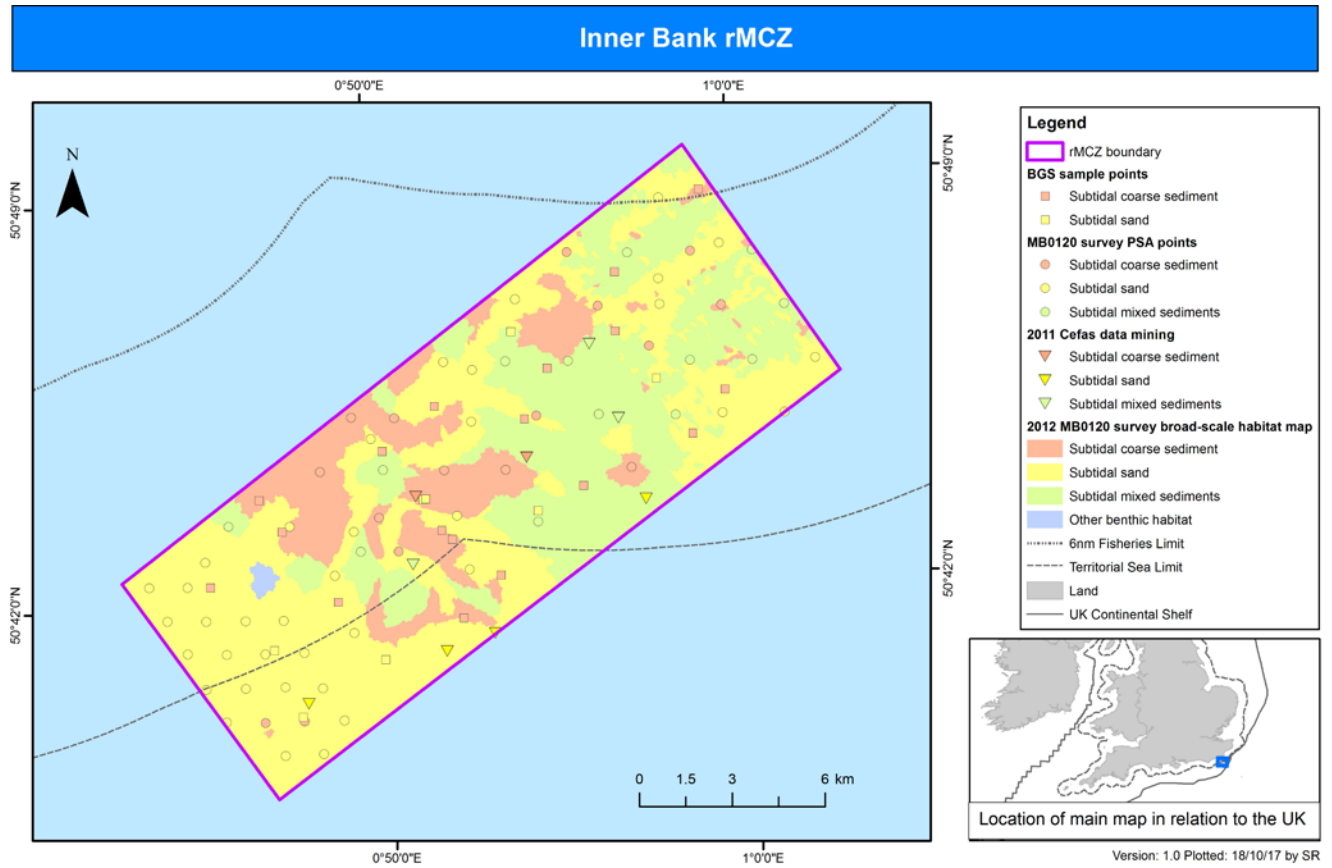
What would this site protect?

Designation would protect the following features. You can read more about the features this site protects and why they are important [here](#).

Feature	General management approach
Subtidal sand	Recover to favourable condition
Subtidal coarse sediment	
Subtidal mixed sediments	

Where are the features located?

The following map shows the location of the features to be protected within the site. A range of different types of surveys have been used to create site maps. More detailed information on the techniques used can be found [here](#).



© JNCC 2017. Contains public sector information licensed under the Open Government Licence v3.0, including United Kingdom Hydrographic Office and Ordnance Survey data © Crown copyright (2015). 2015 BGS PSA Sample points and MB0102 Geological and Geomorphological Features contains British Geological survey materials © NERC. Humber REC and FBC Survey points from GS/MALSF 2009 © Crown Copyright. Cefas data mining contract 2011 (2005 and 2006 Eastern English Channel surveys) © JNCC/CEFAS. MB0120 Survey data and habitat map © Defra. Marine Recorder records derived from a variety of sources, including the 1999 Cefas Beam Trawl Survey © CEFAS. Contains data from EUSeaMap2012, available from EMODnet Seabed Habitats. Map Projection:WGS84UTM30N, Inset: BNG.

Which activities are likely to be affected?

Management decisions are taken on a case by case basis by relevant regulators. If an activity is identified as requiring management this does not necessarily mean that it will need to be significantly restricted. Decisions will be based on the specifics of each case and any restrictions will depend on the sensitivity of the species, habitats or geological/geomorphological features to be protected to the activity taking place. More detail is available in the Impact Assessment.

Sectors and activities likely to be affected by designation		
Sector	Activity Affected	Best Cost Estimate (£) per year (rounded to nearest £100)
Commercial fishing UK	Bottom trawling and dredging	£2,200
Commercial fishing non-UK	Bottom trawling and dredging	Unquantified
Best estimate total cost		£2,200

Commercial fishing UK

The following gears are known to be used within the site:

- Bottom trawls, dredges and mid-water trawls
- Hooks and lines, nets, pots & traps

Fishing activity is generally high in this area with approximately 40-50 active vessels. Trawling takes place mainly in the northern part of the site and scalloping in the south. There is a seasonal high intensity of static netting in the north-east of the site. The activities that are likely to be affected by designation are shown in the table above.

Commercial fishing non-UK

Belgian and French vessels have historical fishing rights between 6nm and 12nm and actively trawl and dredge in this area. Vessels from The Netherlands and the Republic of Ireland also use some areas of the site.

Although impacts outside the UK are not quantified as part of the impact assessment, the implications of designation on non-UK commercial fishing vessels are considered in deciding which sites to designate. The activities that are likely to be affected by designation are shown in the table above.

Which activities are not likely to be affected?

These activities are known to take place at this site but at their current levels of intensity the best available evidence indicates they are not likely to be damaging the features to be protected:

- Archaeological heritage
- Cables - power and telecommunication cables currently intersect the site
- Commercial fisheries - mid-water trawling and static fishing activities
- Commercial shipping
- Oil and gas exploration and/or production
- Recreation

Additional Information

To read the advice provided by Natural England, please visit

<http://publications.naturalengland.org.uk/publication/6079955233931264>

To read the advice provided by the Joint Nature Conservation Committee, please visit

<http://jncc.defra.gov.uk/page-7119>

For further information, please contact Defra on

- 03459 33 55 77 (UK only)
- +44 20 7238 6951 (from outside the UK)
- defra.helpline@defra.gsi.gov.uk



© Crown copyright 2018

You may re-use this information (excluding logos) free of charge in any format or medium, under the terms of the Open Government Licence v.3. To view this licence visit www.nationalarchives.gov.uk/doc/open-government-licence/version/3/ or email PSI@nationalarchives.gsi.gov.uk

This publication is available at www.gov.uk/government/publications