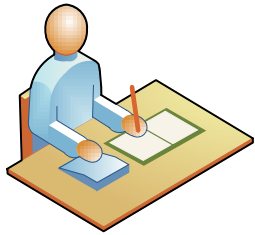
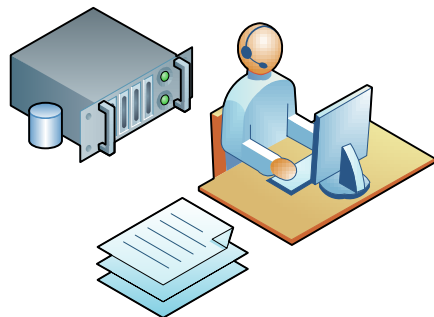


## REPORTING (SHEEP) MOVEMENTS – THE CURRENT PAPER BASED SYSTEM



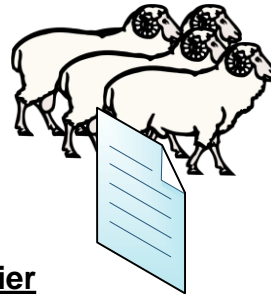
### Dispatching Keeper

- Keeper manually completes an AML movement document
- Enters details of the animals sent in the off movements section of his Holding Register



### Local Authority

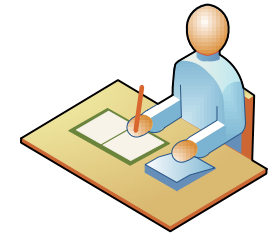
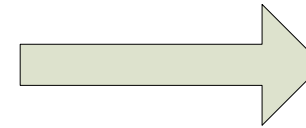
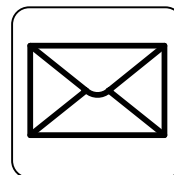
Manually enters the data from each AML on to the Government's Animal Movement Licensing System (AMLS)



### Haulier

- Completes transport section of the AML
- Transports sheep to the destination premises
- Retains a copy of the AML

*A keeper is anyone who is responsible for the day to day care livestock. This can be on a temporary basis i.e. it can include hauliers and staff at a livestock market or at an abattoir as well as a farmer.*



### Destination keeper

- Receives the animals
- Keeps a copy of the AML
- Enters details of the animals (individual IDs or batch data dependant on the types of animals & type of move) into the on movements section of his Holding Register
- Sends a copy to his Local Authority – within 3 days

